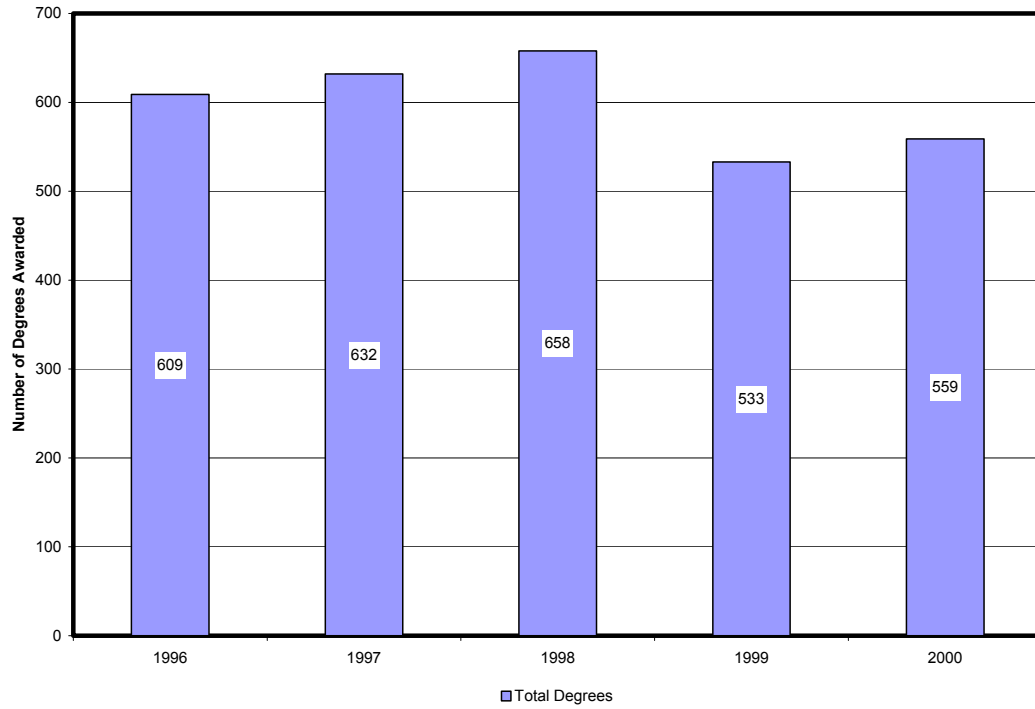


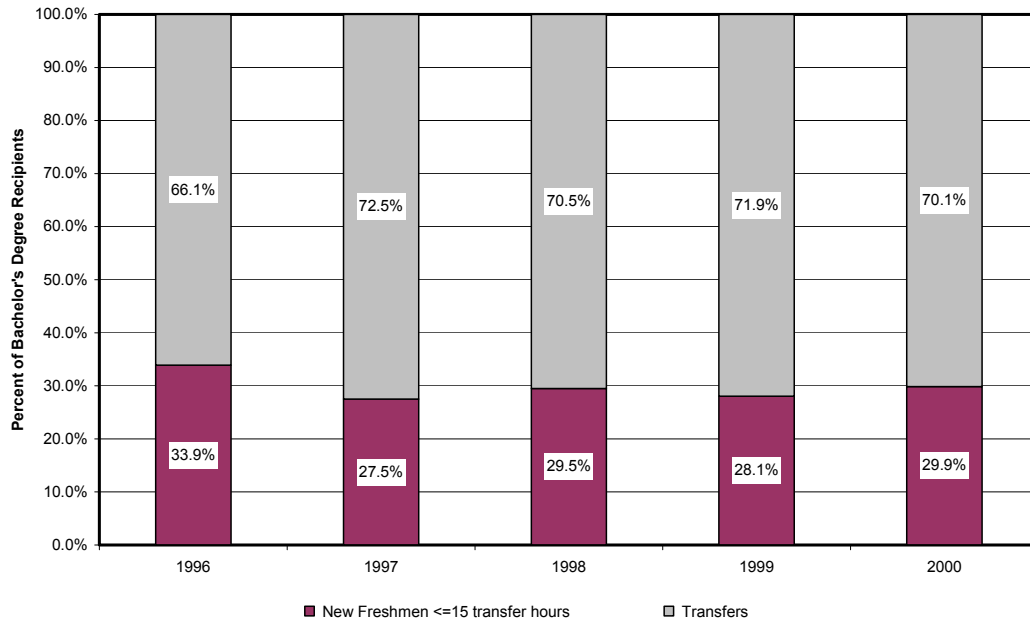
Total Degrees Awarded AY 96-00



Degrees Awarded by Academic Year

Academic Year	Degrees Awarded
1996	609
1997	632
1998	658
1999	533
2000	559

Bachelor's Degrees Awarded by Admissions Type AY 96–00

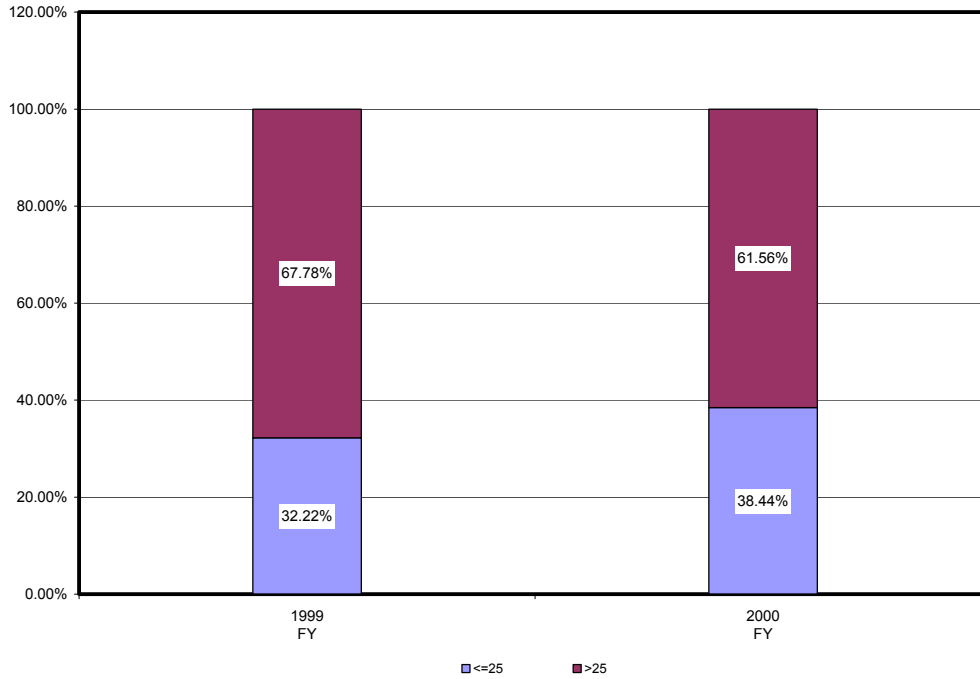


Bachelor's Degree Recipients

	1995– 1996	1996– 1997	1997– 1998	1998– 1999	1999– 2000
New Freshmen*	33.9%	27.5%	29.5%	28.1%	29.9%
Transfers	66.1%	72.5%	70.5%	71.9%	70.1%

*<= 15 transfer hours

Bachelor's Degrees Awarded by Age AY 99-00



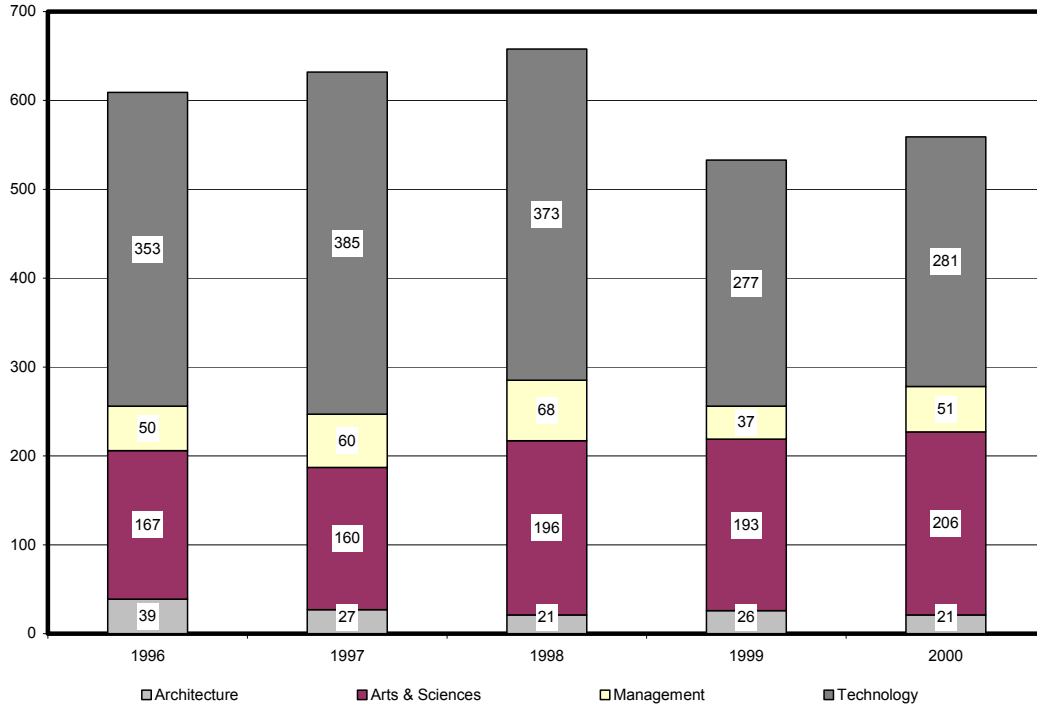
Bachelor's Degrees Awarded by Age

Age	1999	2000
Less than 25	32.22%	38.44%
Greater than 25	67.78%	61.56%

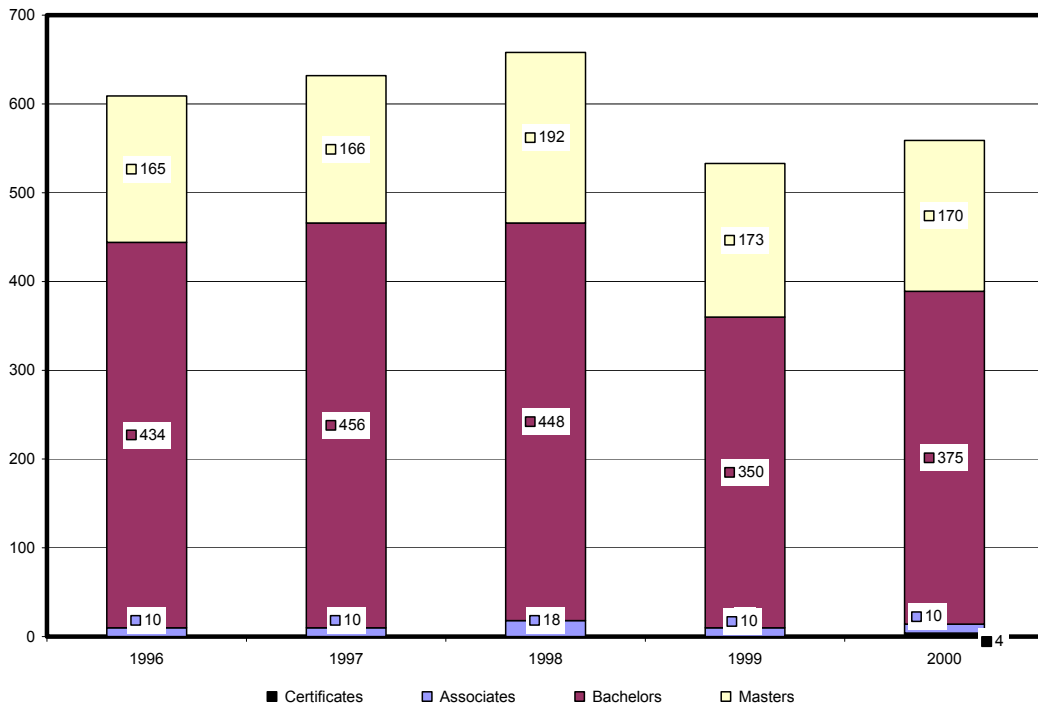
Total Degrees Awarded by School AY 96–00

Degrees Awarded by School/College							
School/College and Degrees	AY 1996	AY 1997	AY 1998	AY 1999	AY 2000	4-year # Change	4-year % Change
School of Architecture							
Bachelors	39	27	21	26	21	-18	-46.2%
Total	39	27	21	26	21	-18	-46.2%
College of Arts and Sciences							
Certificates					4	4	
Associates	10	10	18	10	10	0	0.0%
Bachelors	54	60	75	67	95	41	75.9%
Masters	103	90	103	116	97	-6	-5.8%
Total	167	160	196	193	206	39	23.4%
School of Management							
Bachelors	14	24	26	13	22	8	57.1%
Masters	36	36	42	24	29	-7	-19.4%
Total	50	60	68	37	51	1	2.0%
College of Technology							
Bachelors	327	345	326	244	237	-90	-27.5%
Masters	26	40	47	33	44	18	69.2%
Total	353	385	373	277	281	-72	-20.4%
Total University							
Certificates					4	4	
Associates	10	10	18	10	10	0	0.0%
Bachelors	434	456	448	350	375	-59	-13.6%
Masters	165	166	192	173	170	5	3.0%
Total	609	632	658	533	559	-50	-8.2%
Annual % Change	3.7%	3.8%	4.1%	-19.0%	4.9%		

Total Degrees Awarded by School AY 96-00



Total Degrees Awarded by Level AY 96-00



Total Degrees Awarded School of Architecture AY 96–00

Degrees Awarded: School of Architecture							
Degree Program	AY 1996	AY 1997	AY 1998	AY 1999	AY 2000	4-year # change	4-year % change
B Architecture	24	14	15	17	16	-8	-33.3%
BS Environmental Development	8	10	5	8	5	-3	-37.5%
BS Architectural Engineering Tech.	7	3	1	1		-7	-100.0%
Total School Baccalaureate	39	27	21	26	21	-18	-46.2%
Annual % Change	30.0%	-30.8%	-22.2%	23.8%	-19.2%		
School % of Total University Degrees Awarded	6.4%	4.3%	3.2%	4.9%	3.8%		

Total Degrees Awarded College of Arts & Sciences AY 96-00

Degrees Awarded: College of Arts & Sciences							
Degree Program	AY 1996	AY 1997	AY 1998	AY 1999	AY 2000	4-year # Change	4-year % Change
General Studies							
Associate	10	10	18	10	10	0	0.0%
Computer Science							
BA	0	0	0	0	0	0	
BS	40	51	64	50	78	38	95.0%
MS	72	65	77	76	64	-8	-11.1%
Mathematics							
BA	0	0	0	0	0	0	
BS	5	1	5	6	3	-2	-40.0%
Physics							
BA	0	0	0	0	0	0	
BS	7	5	2	4	2	-5	-71.4%
Software Engineering							
MS	0	0	0	1	4	4	
Technical & Professional Comm.							
BA	0	0	0	0	0	0	
BS	2	3	4	7	12	10	500.0%
MS	31	25	26	39	29	-2	-6.5%
Total College							
Associate	10	10	18	10	10	0	0.0%
Baccalaureate	54	60	75	67	95	41	75.9%
Masters	103	90	103	116	97	-6	-5.8%
Combined Total	167	160	196	193	202	35	21.0%
Annual % Change	23.7%	-4.2%	22.5%	-1.5%	4.7%		
College % of Total University Degrees Awarded	27.4%	25.3%	29.8%	36.2%	36.1%		

Total Degrees Awarded School of Management AY 96–00

Degrees Awarded: School of Management							
Degree Program	AY 1996	AY 1997	AY 1998	AY 1999	AY 2000	4-year # Change	4-year % Change
BA Management of Technology	0	0	0	0	0		
BS Management of Technology	14	24	26	13	22	8	57.1%
MS Management of Technology	36	36	42	24	29	-7	-19.4%
Total School							
Baccalaureate	14	24	26	13	22	8	57.1%
Masters	36	36	42	24	29	-7	-19.4%
Combined Total	50	60	68	37	51	1	2.0%
Annual % Change	-3.8%	20.0%	13.3%	-45.6%	37.8%		
School % of Total University Degrees Awarded	8.2%	9.5%	10.3%	6.9%	9.1%		

Total Degrees Awarded College of Technology AY 96–00

Degrees Awarded: College of Technology

Degree Program	AY 1996	AY 1997	AY 1998	AY 1999	AY 2000	4-year # Change	4-year % Change
ATET Department							
BS Apparel/Textile Engineering Tech.	16	14	14	13	11	-5	-31.3%
Civil Engineering Technology Department							
BS Civil Engineering Tech.	67	73	63	45	41	-26	-38.8%
BS Surveying and Mapping	0	0	4	4	2	2	
Construction Department							
BS Construction	26	19	26	22	18	-8	-30.8%
MS Construction	0	13	24	8	13	13	
Electrical and Computer Engineering Technology Department							
BS Computer Engineering Tech.	23	18	23	15	26	3	13.0%
BS Electrical Engineering Tech.	76	95	77	45	57	-19	-25.0%
BS Telecommunication					5	5	
MS Engineering Tech.	21	17	8	11	2	-19	-90.5%
Industrial Engineering Technology Department							
BS Industrial Distribution	0	0	0	0	0		
BS Industrial Engineering Tech.	67	67	54	39	28	-39	-58.2%
MS Quality Assurance	5	10	15	14	29	24	480.0%
Mechanical Engineering Technology Department							
BS Manufacturing	1	0	0	0	0	-1	-100.0%
BS Mechanical Engineering Tech.	51	59	65	61	49	-2	-3.9%
Total College							
Baccalaureate	327	345	326	244	237	-90	-27.5%
Masters	26	40	47	33	44	18	69.2%
Combined Total	353	385	373	277	281	-72	-20.4%
Annual % Change	-4.6%	9.1%	-3.1%	-25.7%	1.4%		
College % of Total University Degrees Awarded							
	58.0%	60.9%	56.7%	52.0%	50.3%		

Source: IPEDS Completion Surveys

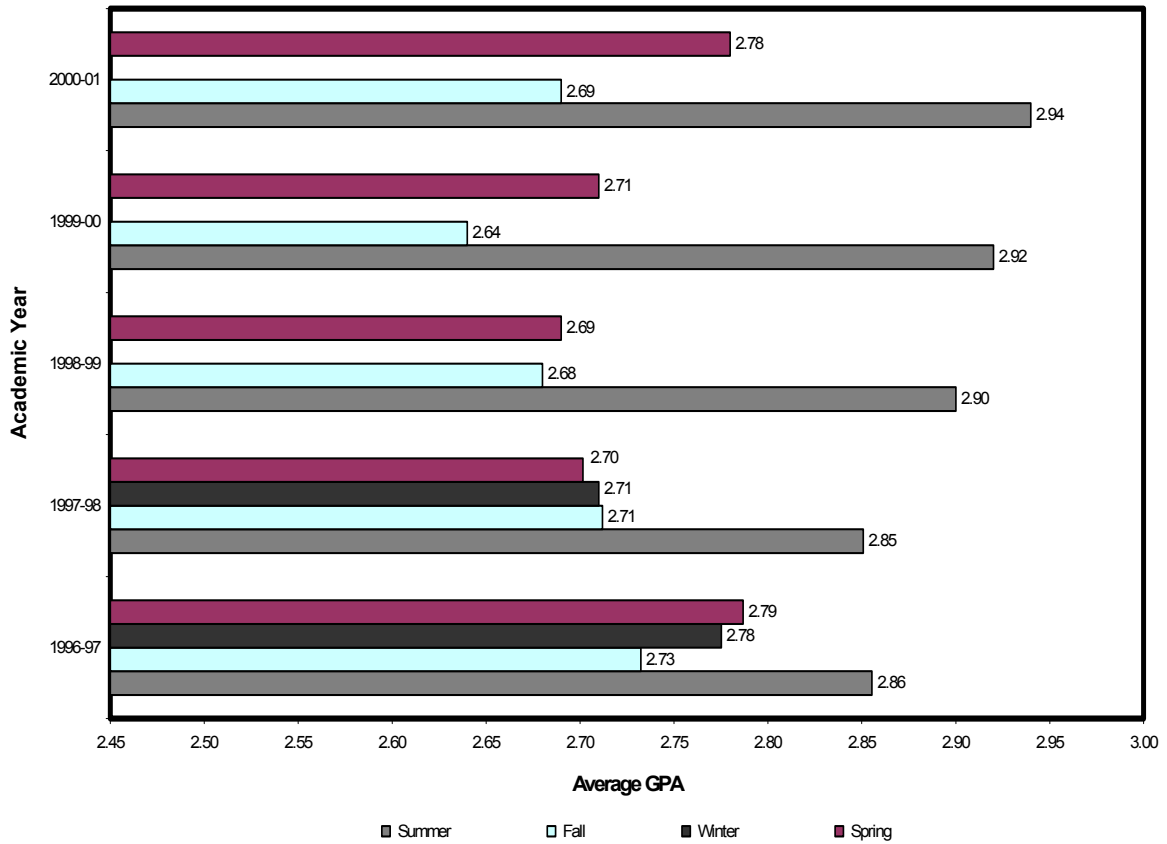
Grade Distribution by Term AY 96–00

Grades by Term							
	Percent A's	Percent B's	Percent C's	Percent D's	Percent F's	Percent Other**	Average GPA
1996–97							
Summer	28%	29%	17%	5%	4%	17%	2.86
Fall	26%	28%	19%	6%	6%	15%	2.73
Winter	26%	29%	18%	6%	5%	15%	2.78
Spring	28%	27%	18%	6%	6%	15%	2.79
Total	27%	28%	18%	6%	5%	15%	2.78
1997–98							
Summer	30%	28%	16%	6%	5%	15%	2.85
Fall	26%	28%	19%	6%	7%	15%	2.71
Winter	26%	28%	18%	6%	7%	14%	2.71
Spring	26%	28%	18%	6%	7%	15%	2.70
Total	27%	28%	18%	6%	6%	15%	2.73
1998–99							
Summer	30%	31%	17%	4%	4%	14%	2.90
Fall	25%	27%	18%	6%	7%	16%	2.68
Spring	25%	27%	17%	6%	7%	16%	2.69
Total*							
1999–2000							
Summer	31%	29%	17%	4%	4%	13%	2.92
Fall	25%	27%	17%	6%	8%	15%	2.64
Spring	27%	26%	17%	6%	8%	15%	2.71
Total	27%	27%	17%	6%	7%	17%	
2000–01							
Summer	33%	28%	14%	4%	5%	16%	2.94
Fall	27%	27%	18%	6%	8%	15%	2.69
Spring	30%	27%	16%	5%	7%	15%	2.78
Total	29%	27%	16%	5%	7%	15%	

*Note: 1998-99 total not available due to Banner conversion.

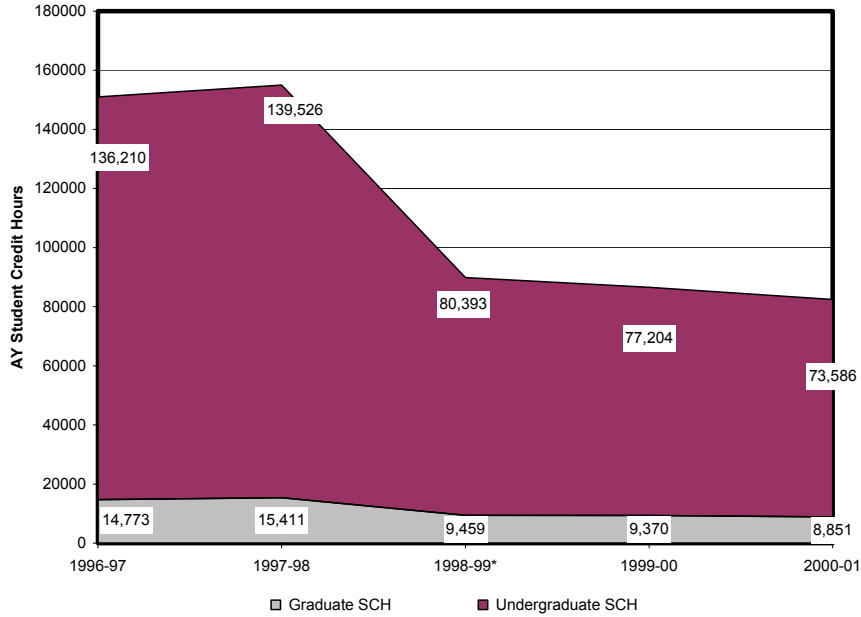
**I, IP, K, NR, S, U, V, W, WF

Average GPA by Term AY 96-00



Note: Winter term was discontinued during '98-99

Student Credit Hours by Level AY 96-00



*Note: Winter term discontinued

Academic Year Student Credit Hours

	AY 1996	AY 1997	AY 1998	AY 1999	AY 2000	4-year # Change	4-year % Change
Summer							
Undergraduate	17,049	18,151	13,100	11,957	10,717	-6,332	-37.1%
Graduate Division	2,923	3,216	2,620	2,313	2,073	-850	-29.1%
Total	19,972	21,367	15,720	14,270	12,790	-7,182	-36.0%
Fall							
Undergraduate	42,344	42,845	34,458	33,953	33,094	-9,250	-21.8%
Graduate Division	3,944	4,013	3,419	3,567	3,394	-550	-13.9%
Total	46,288	46,858	37,877	37,520	36,488	-9,800	-21.2%
Winter*							
Undergraduate	39,542	40,773					
Graduate Division	3,894	4,044					
Total	43,436	44,817					
Spring							
Undergraduate	37,275	37,757	32,835	31,294	29,775	-7,500	-20.1%
Graduate Division	4,012	4,138	3,420	3,490	3,384	-628	-15.7%
Total	41,287	41,895	36,255	34,784	33,159	-8,128	-19.7%
Academic Year							
Undergraduate	136,210	139,526	80,393	77,204	73,586	-62,624	-46.0%
Graduate Division	14,773	15,411	9,459	9,370	8,851	-5,922	-40.1%
Total	150,983	154,937	89,852	86,574	82,437	-68,546	-45.4%

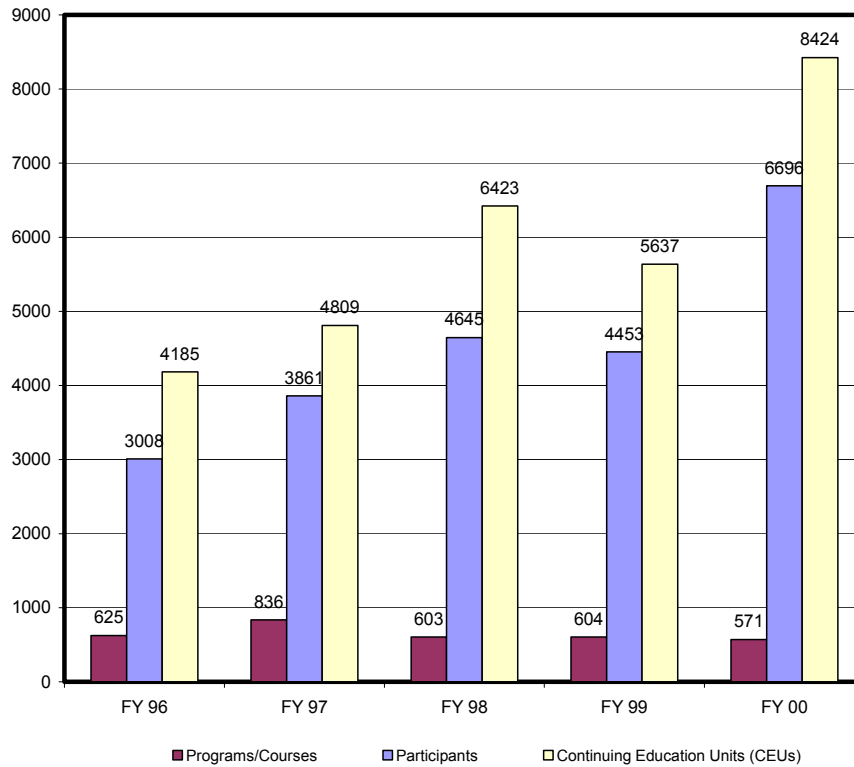
*Note: Winter term discontinued.

Lawrence V. Johnson Library

Library Holdings						
	FY94	FY96	FY98	FY00	6-year # Change	6-year % Change
Books/Other Materials	109,427	114,207	114,256	117,963	8,536	7.8%
Periodicals/ Newspapers	1,272	1,314	1,415	1,320	48	3.8%
Microforms	48,390	52,374	55,686	56,619	8,229	17.0%
Audiovisual Materials	6,180	6,108	62	60	-6,120	-99.0%
Computer Files	5	39	68	8	3	60.0%
Volumes Added During Year	5,951	3,010	4,258	2,964	-2,987	-50.2%

Library Services						
	FY94	FY96	FY98	FY99	6-year # Change	6-year % Change
Circulation Transactions						
General Collection	32,857	20,750	31,255	17,837	-15,020	-45.7%
Reserve Collection	14,577	8,723	12,380	11,184 **	-3,393	-23.3%
Document Delivery/ Interlibrary Loan						
Provided	1,576	569	1,292	1,076	-500	-31.7%
Received	1,326	935	617	345	-981	-74.0%
Information Services						
# of Presentations	36	62	44	36	0	0.0%
# of Persons Served	750	1,195	876	600	-150	-20.0%
Public Service Hours/Week	77	80	80	80	3	3.9%
Gate Count/Week		4,300	4,500			
Reference Transactions/Week	4,075 *	50	90	53		
* included computer searches						
**now using electronic reserves						

Continuing Education Enrollment FY 96–00



Continuing Education							
Category	FY 96	FY 97	FY 98	FY 99	FY 00	4-year # Change	4-year % Change
Programs/Courses	625	836	603	604	571	-54	-8.6%
Participants	3,008	3,861	4,645	4,453	6,696	3,688	122.6%
Participant Hours	41,848	4,808	64,235	56,367	84,239	42,391	101.3%
Continuing Education Credits (CEU's)	4,185	4,809	6,423	5,637	8,424	4,239	101.3%

Source: Continuing Education