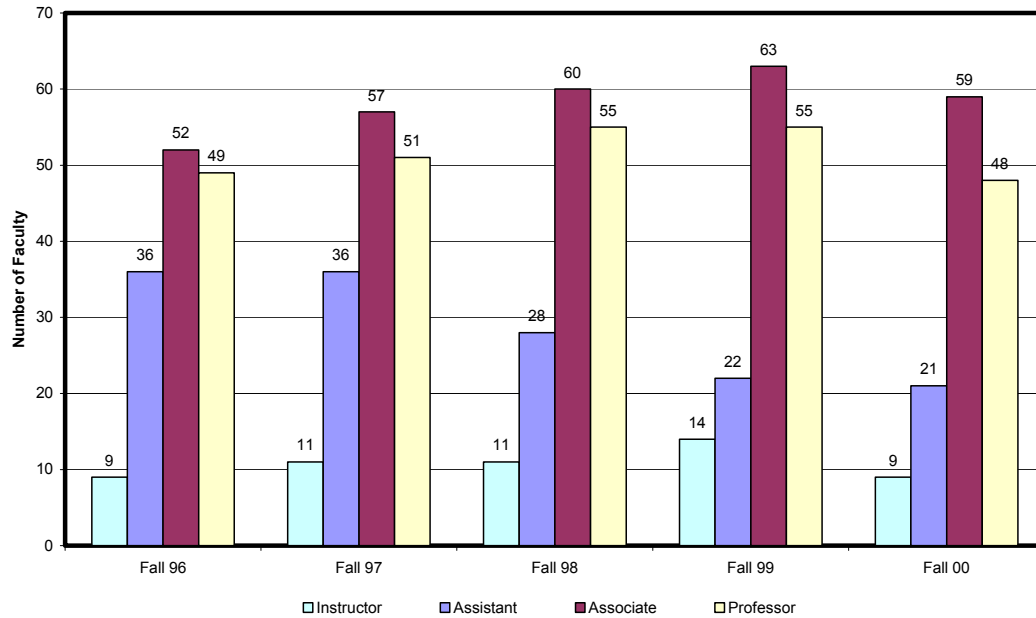


Full-time Faculty by Rank Fall 96–00

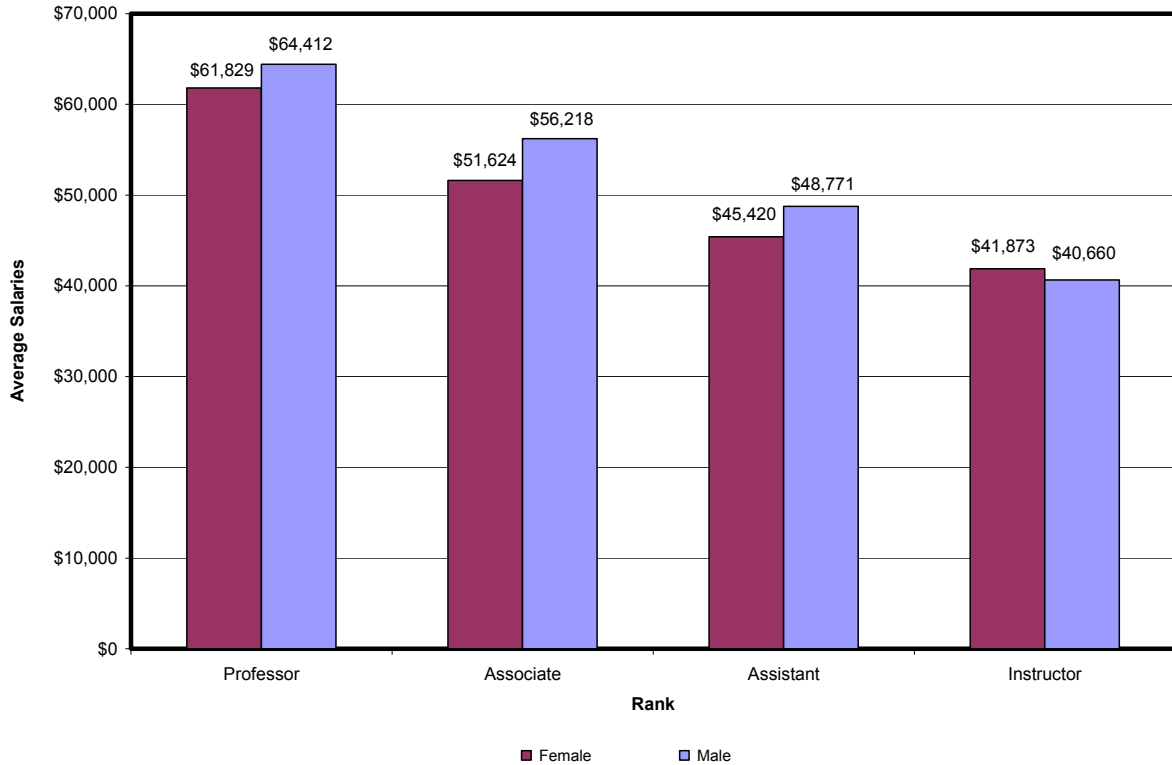


Full-time Faculty by Rank							
Rank	Fall 1996	Fall 1997	Fall 1998	Fall 1999	Fall 2000	4-year # Change	4-year % Change
Professors	49	51	55	55	48	-1	-2.0%
Associate Professors	52	57	60	63	59	7	13.5%
Assistant Professors	36	36	28	22	21	-12	-41.7%
Instructors	9	11	11	14	9	0	0.0%
Total	146	155	154	154	137	-9	-6.2%

Full-time Faculty Profile Fall 96-00

Full-time Faculty Profile												
	Fall 1996		Fall 1997		Fall 1998		Fall 1999		Fall 2000		4-year # Change	4-year % Change
	N	%	N	%	N	%	N	%	N	%		
Doctorates	84	58%	84	54%	82	53%	83	54%	76	55%	-8	-9.5%
Tenured	86	59%	89	57%	99	64%	102	66%	97	71%	11	12.8%
Male	119	82%	127	82%	128	83%	130	84%	115	84%	-4	-3.4%
Female	27	18%	28	18%	26	17%	24	16%	22	16%	-5	-18.5%
Professors	49	34%	51	33%	55	36%	55	36%	48	35%	-1	-2.0%
Associate Professors	52	36%	57	37%	60	39%	63	41%	59	43%	7	13.5%
Assistant Professors	36	25%	36	23%	28	18%	22	14%	21	15%	-12	-41.7%
Instructors	9	6%	11	7%	11	7%	14	9%	9	7%	0	0.0%
Total	146		155		154		154		137		-9	-6.2%

Average Faculty Salaries by Rank and Gender Fall 00

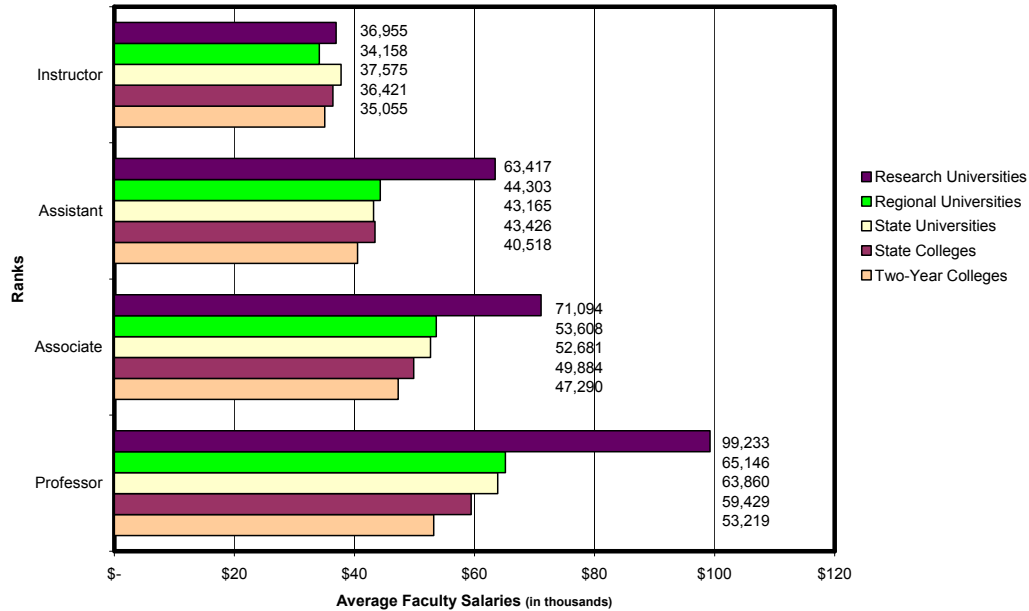


Average Salaries* by Rank and Gender

	Fall 1996	Fall 1997	Fall 1998	Fall 1999	Fall 2000	4-year # Change	4-year % Change
Professor							
Male	\$54,568	\$57,425	\$59,797	\$62,335	\$64,412	\$9,844	18.0%
Female	\$51,282	\$55,214	\$58,365	\$60,157	\$61,829	\$10,547	20.6%
Associate Professor							
Male	\$46,061	\$48,522	\$51,585	\$53,527	\$56,218	\$10,157	22.1%
Female	\$41,040	\$43,462	\$44,614	\$49,485	\$51,624	\$10,584	25.8%
Assistant Professor							
Male	\$42,577	\$44,395	\$45,831	\$47,238	\$48,771	\$6,194	14.5%
Female	\$38,883	\$43,051	\$38,177	\$41,155	\$45,420	\$6,537	16.8%
Instructor							
Male	\$34,258	\$35,699	\$37,416	\$40,506	\$40,660	\$6,402	18.7%
Female	\$30,916	\$32,283	\$35,376	\$40,577	\$41,873	\$10,957	35.4%

* Note: 12-month salaries converted to 9-month equivalent

USG Nine-Month Faculty Salaries by Rank Fall 99



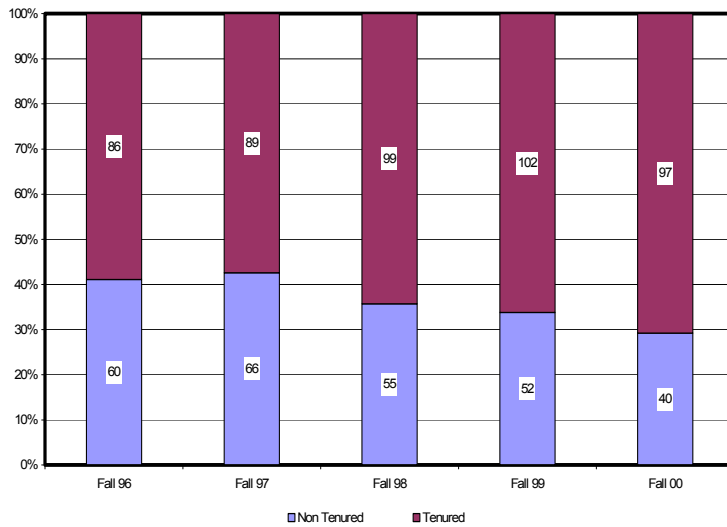
USG Nine-Month Faculty Salaries by Rank*

	Research Universities	Regional Universities	State Universities	Southern Polytechnic	State Colleges	Two-Year Colleges
Professor						
Maximum	\$135,075	\$67,786	\$70,393	\$71,162	\$59,479	\$62,375
Average	99,233	65,146	63,860	62,204	59,429	53,219
Minimum	87,763	62,650	57,730	66,353	59,415	44,210
Associate Professor						
Maximum	103,850	54,177	57,415	63,169	51,013	52,433
Average	71,094	53,608	52,681	52,403	49,884	47,290
Minimum	62,251	52,726	47,988	43,622	49,027	44,418
Assistant Professor						
Maximum	98,196	45,155	50,835	52,312	43,967	65,601
Average	63,417	44,303	43,165	47,357	43,426	40,518
Minimum	51,763	43,765	38,947	40,000	43,042	37,356
Instructor						
Maximum	51,750	38,220	47,814	46,074	38,157	59,530
Average	36,955	34,158	37,757	40,402	36,421	35,055
Minimum	30,230	32,636	31,683	38,735	34,211	30,800
Average Faculty Salary	\$75,349	\$48,801	\$50,420	\$53,816	\$46,547	\$43,308
Number of Faculty	3,828	1,024	2,199	144	193	908

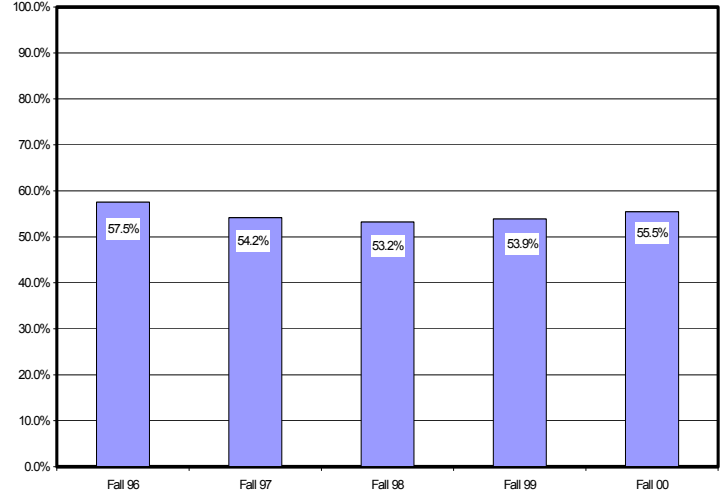
* Note: Excluded faculty whose primary responsibility is administrative.

Tenured/Non-tenured Faculty & Faculty with Doctorates: Fall 96-00

Percentage Full-time Faculty by Tenure Status
Fall 96-00



Percentage of Full-time Faculty with Doctorate
Fall 96-00

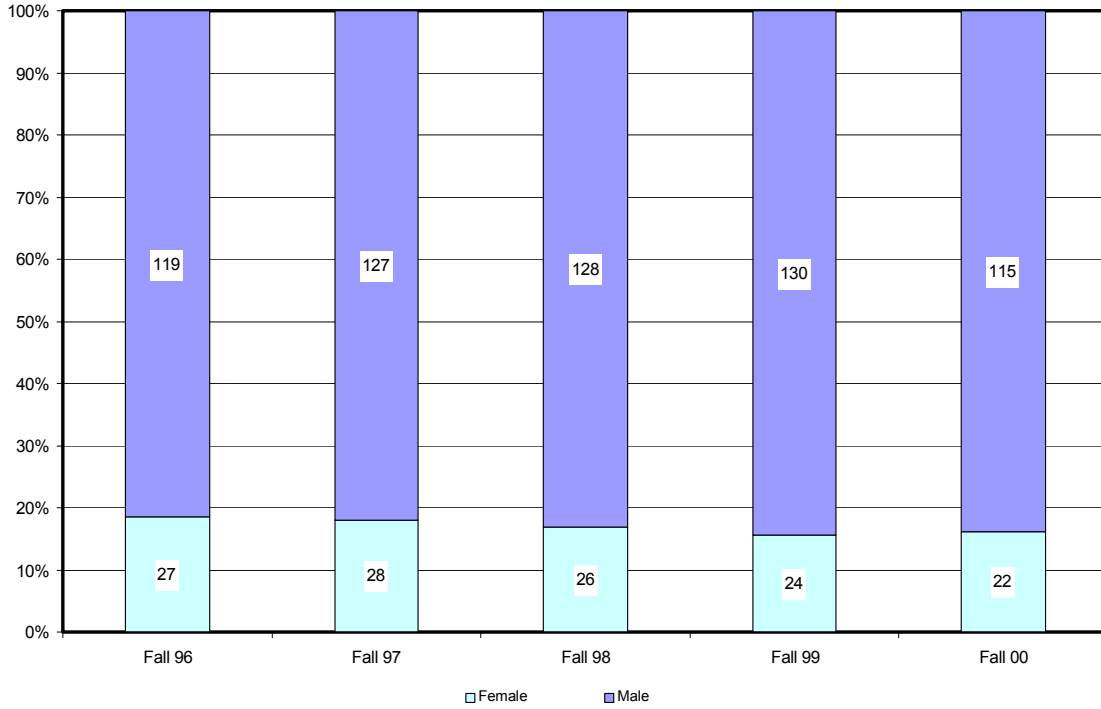


Tenured/Non-tenured Faculty & Faculty with Doctorates

	Fall 1996	Fall 1997	Fall 1998	Fall 1999	Fall 2000	4-year # Change	4-year % Change
Tenured	86	89	99	102	97	11	12.8%
Non-Tenured	60	66	55	52	40	-20	-33.3%
Total	146	155	154	154	137	-9	-6.2%
Faculty with Doctorate	84	84	82	83	76	-8	-9.5%
Percent with Doctorate	57.5%	54.2%	53.2%	53.9%	55.5%		

Sources: IPEDS Salaries of Full-time Faculty Survey, SPSU Catalog, and 1997 Roster of Instructional Staff (SACS)

Full-time Faculty by Gender Fall 96–00



Full-time Faculty by Gender

	Fall 1996	Fall 1997	Fall 1998	Fall 1999	Fall 2000	4-year # Change	4-year % Change
Male	119	127	128	130	115	-4	-3.4%
Female	27	28	26	24	22	-5	-18.5%
Total	146	155	154	154	137	-9	-6.2%

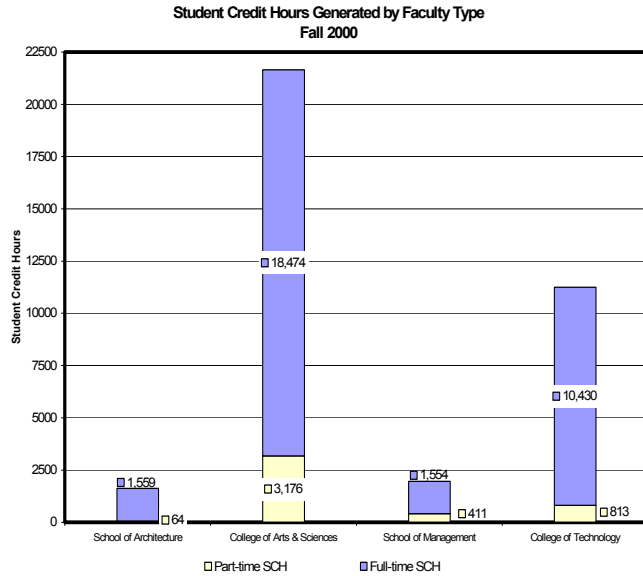
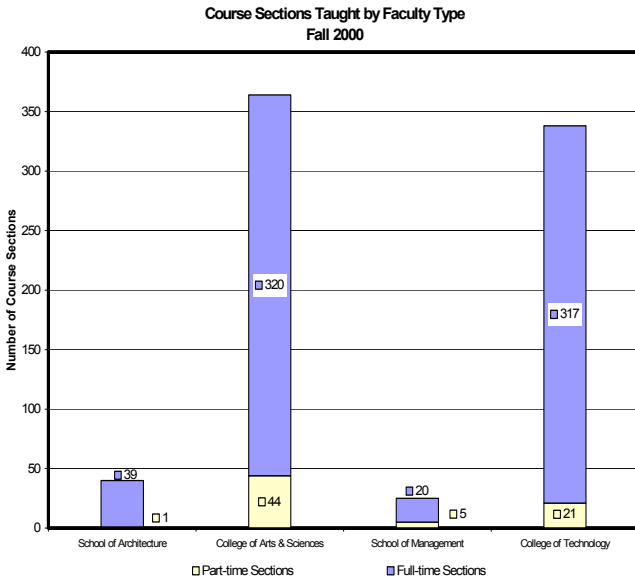
Fall 2000 Full-time Faculty by Gender & Rank

	Professor	Associate Professor	Assistant Professor	Instructor	Total
Male	41	51	16	7	115
Female	7	8	5	2	22
Total	48	59	21	9	137

Sections and Student Credit Hours Taught by Part-time Faculty by School and Department Fall 2000

Part-time Faculty by School and Department						
	Total Sections	Part-time Sections	% of Total Sections	Total SCH	Part-time SCH	% of Total SCH
School of Architecture						
Architecture	40	1	3%	1,623	64	4%
College of Arts & Sciences						
Humanities and Technical Communication	97	16	16%	5,115	1,069	21%
Mathematics	63	8	13%	5,219	639	12%
Physics, Chemistry, and Biological Sciences	63	4	6%	2,639	352	13%
Social and International Studies	45	10	22%	3,307	616	19%
Computer Science	96	6	6%	5,370	500	9%
Total College of Arts and Sciences	364	44	12%	21,650	3,176	15%
School of Management						
Management	25	5	20%	1,965	411	21%
College of Technology						
Civil Engineering Technology	60	2	3%	1,930	129	7%
Mechanical Engineering Technology	53	0	0%	2,112	0	0%
Apparel and Textile Engineering Technology	16	0	0%	299	0	0%
Construction	40	5	13%	1,592	200	13%
Industrial Engineering Technology	74	2	3%	1,894	68	4%
Electrical and Computer Engineering Technology	95	12	13%	3,416	416	12%
Total College of Technology	338	21	6%	11,243	813	7%
Total University	767	71	9%	36,481	4,464	12%

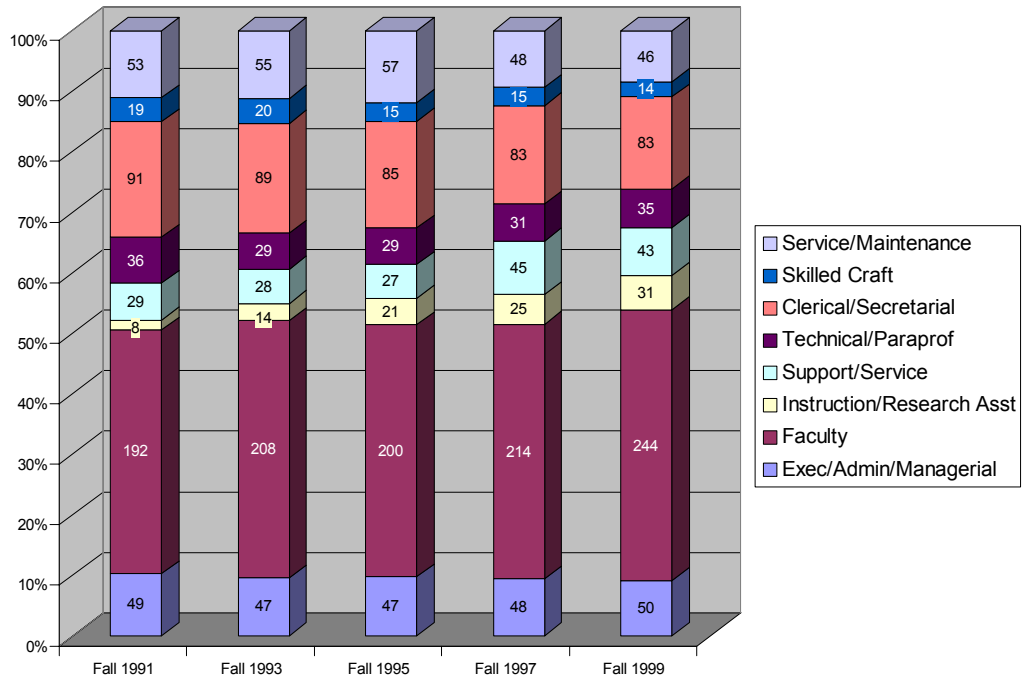
Sections and Student Credit Hours Taught by Part-time vs. Full-time Faculty by School Fall 2000



Part-time vs. Full-time Faculty by School

	Part-time Sections	Full-time Sections	Part-time SCH	Full-time SCH
School of Architecture	1	39	64	1,559
College of Arts & Sciences	44	320	3,176	18,474
School of Management	5	20	411	1,554
College of Technology	21	317	813	10,430
Total	71	696	4,464	32,017

Total Employees by EEO Category Fall 91-99



Employees by EEO Category										
EEO Category	Fall 1991		Fall 1993		Fall 1995		Fall 1997		Fall 1999	
	N	% of Cat.	N	% of Cat.	N	% of Cat.	N	% of Cat.	N	% of Cat.
Exec./Admin./Mgt.	49	10.3%	47	9.6%	47	9.8%	48	9.4%	50	9.2%
Faculty	192	40.3%	208	42.4%	200	41.6%	214	42.0%	244	44.7%
Instruction/Research Asst.	8	1.7%	14	2.9%	21	4.4%	25	4.9%	31	5.7%
Support/Service	29	6.1%	28	5.7%	27	5.6%	45	8.8%	43	7.9%
Technical/Paraprof.	36	7.5%	29	5.9%	29	6.0%	31	6.1%	35	6.4%
Secretarial/Clerical	91	19.1%	89	18.2%	85	17.7%	83	16.3%	83	15.2%
Skilled Craft	19	4.0%	20	4.1%	15	3.1%	15	2.9%	14	2.6%
Service Maintenance	53	11.1%	55	11.2%	57	11.9%	48	9.4%	46	8.4%
Total Employment	477		490		481		509		546	

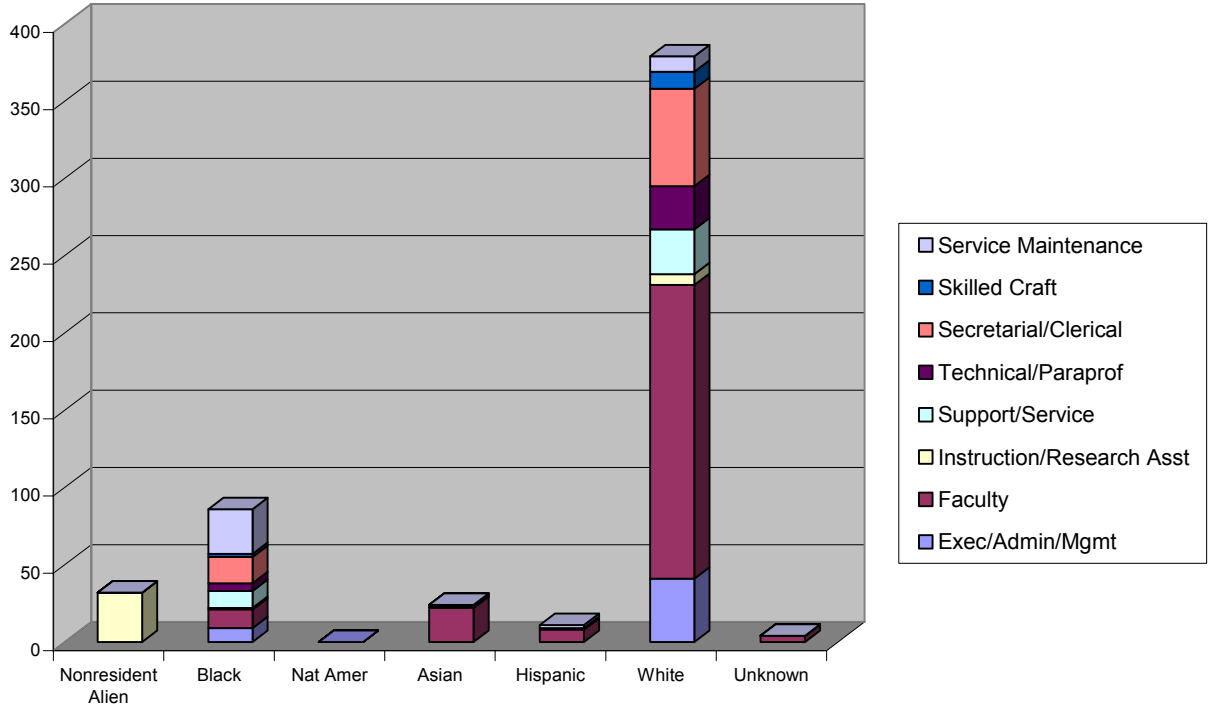
Sources: IPEDS Fall Staff Survey and EEOC Report

Total Employees: Fall 1999

Employees by Gender and Ethnicity																
	Nonresident Alien		Black		Native American		Asian		Hispanic		White		Other		Total	
Females	15	47%	56	65%	0	0%	6	25%	3	27%	140	37%	14	54%	234	42%
Males	17	53%	30	35%	0	0%	18	75%	8	73%	239	63%	12	46%	324	58%
Total	32		86		0		24		11		379		26		558	

Employees by EEO Category and Ethnicity																
	Nonresident Alien		Black		Native American		Asian		Hispanic		White		Other		Total	
Exec./Admin./Mgt.	0	0%	9	10%	0	0%	0	0%	0	0%	41	11%	0	0%	50	9%
Faculty	0	0%	12	14%	0	0%	22	92%	8	73%	190	50%	4	100%	236	44%
Instruction/Research/Asst.	32	100%	1	1%	0	0%	1	4%	0	0%	7	2%	0	0%	41	8%
Support/Service	0	0%	11	13%	0	0%	1	4%	0	0%	29	8%	0	0%	41	8%
Technical/Paraprof.	0	0%	5	6%	0	0%	0	0%	0	0%	28	7%	0	0%	33	6%
Secretarial/Clerical	0	0%	17	20%	0	0%	0	0%	1	9%	63	17%	0	0%	81	15%
Skilled Craft	0	0%	2	2%	0	0%	0	0%	0	0%	11	3%	0	0%	13	2%
Service Maintenance	0	0%	29	34%	0	0%	0	0%	2	18%	10	3%	0	0%	41	8%
Total Employment	32		86		0		24		11		379		4		536	

Employees by Ethnicity and EEO Category Fall 99



Employees by Gender and Ethnicity Fall 99

