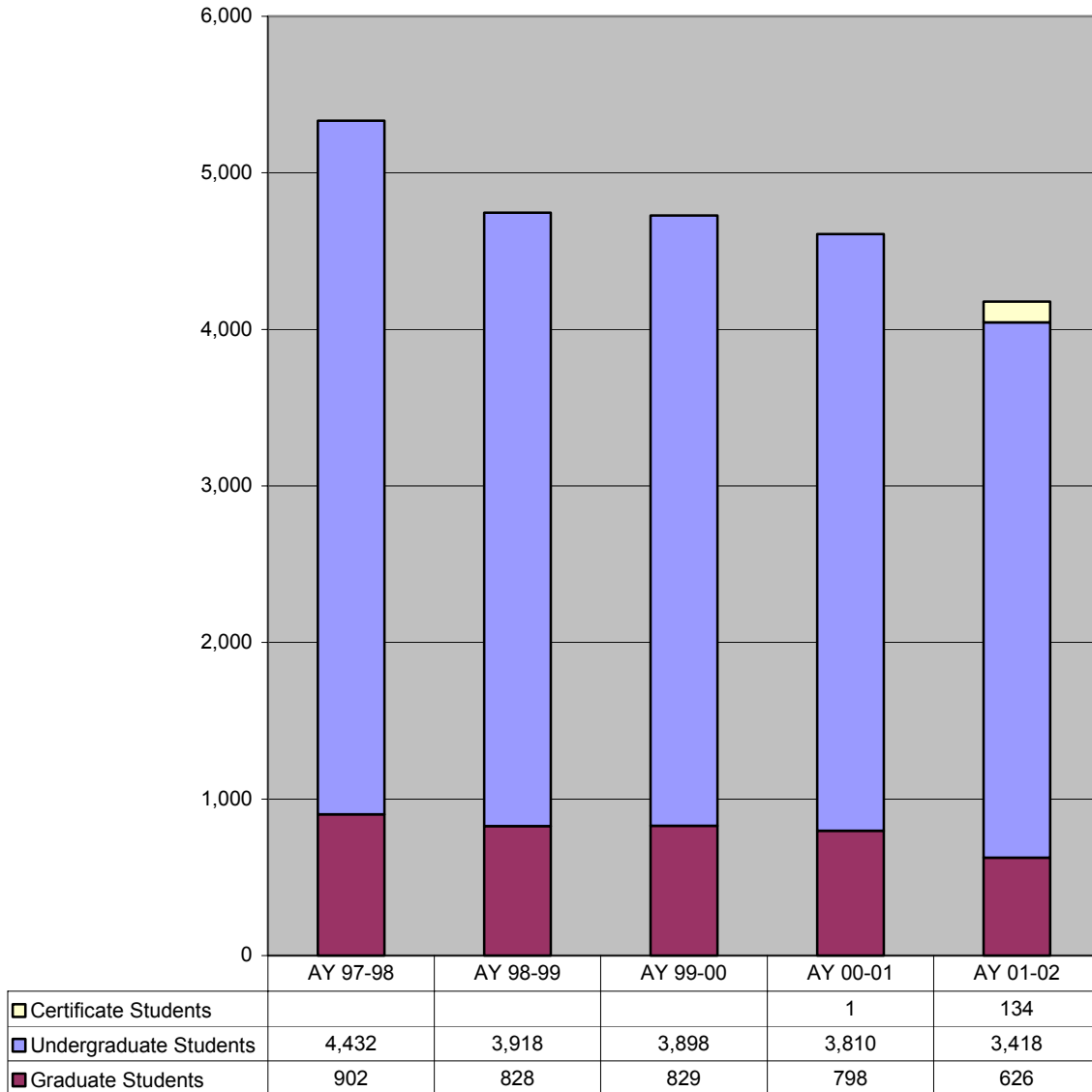



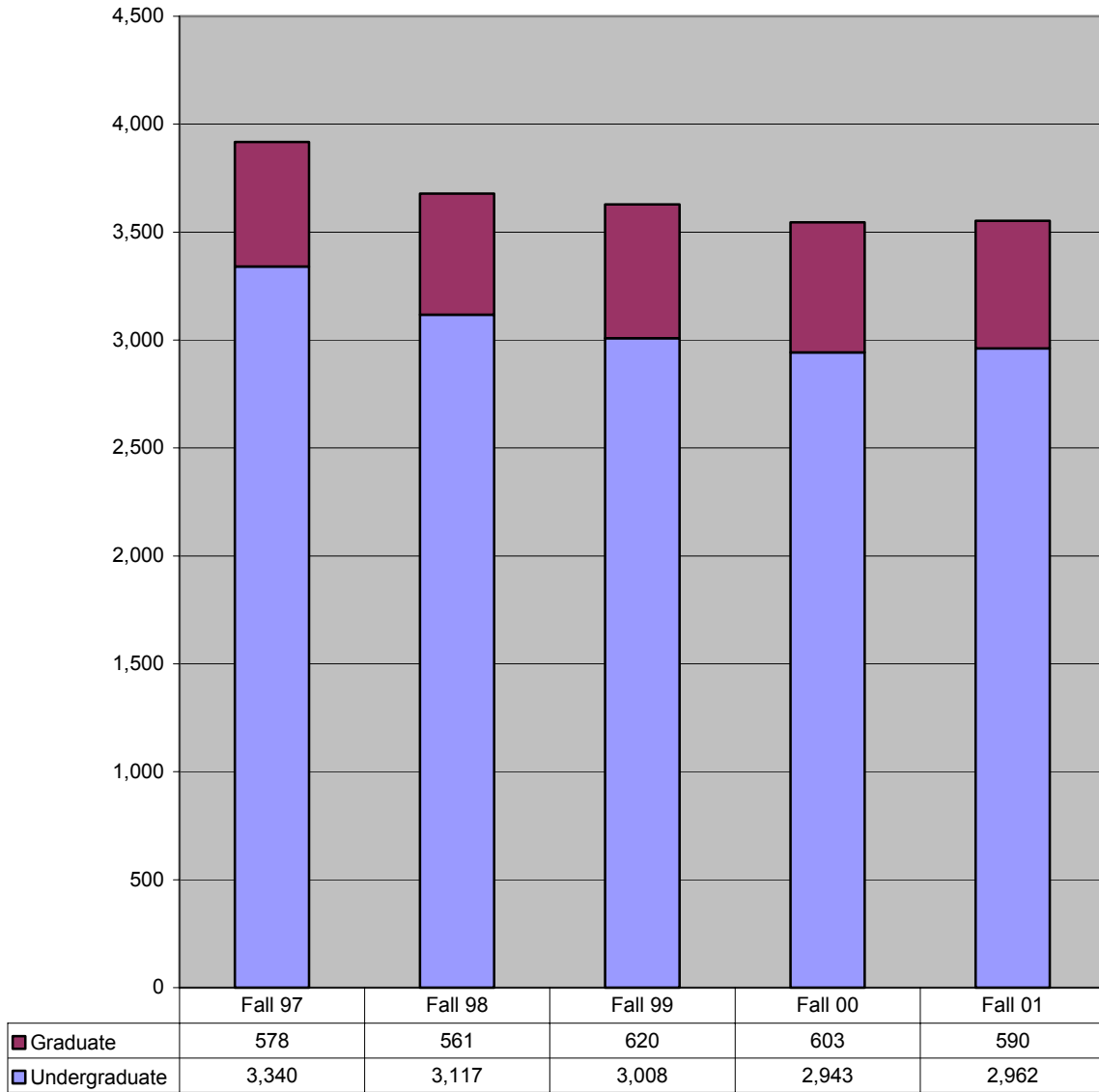
Unduplicated Headcount AY 98-02




 **The total number of students (unduplicated) attending SPSU during one academic year has decreased by 22% since the 97-98 academic year.**

Source: SPSU Banner Report WSHR1000

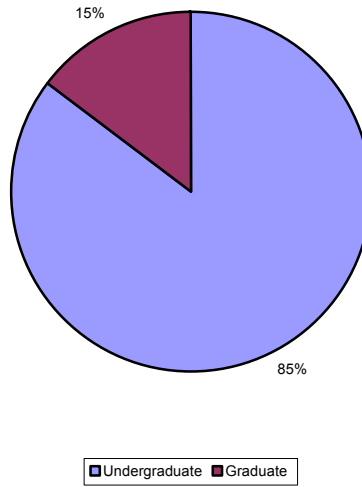
Headcount Enrollment by Student Level Fall 97-01



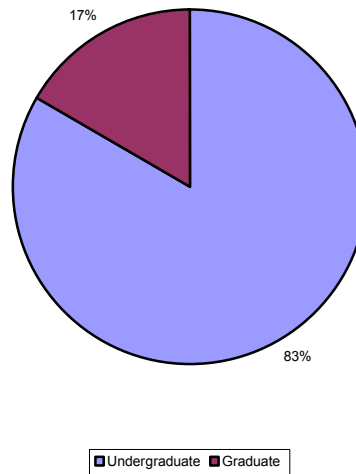
 The number of undergraduates has declined by 11% and the number of graduates has grown by 2% from Fall 97 to Fall 01.

Source: IPEDS Fall Enrollment Survey

Headcount Enrollment by Student Level
Fall 97



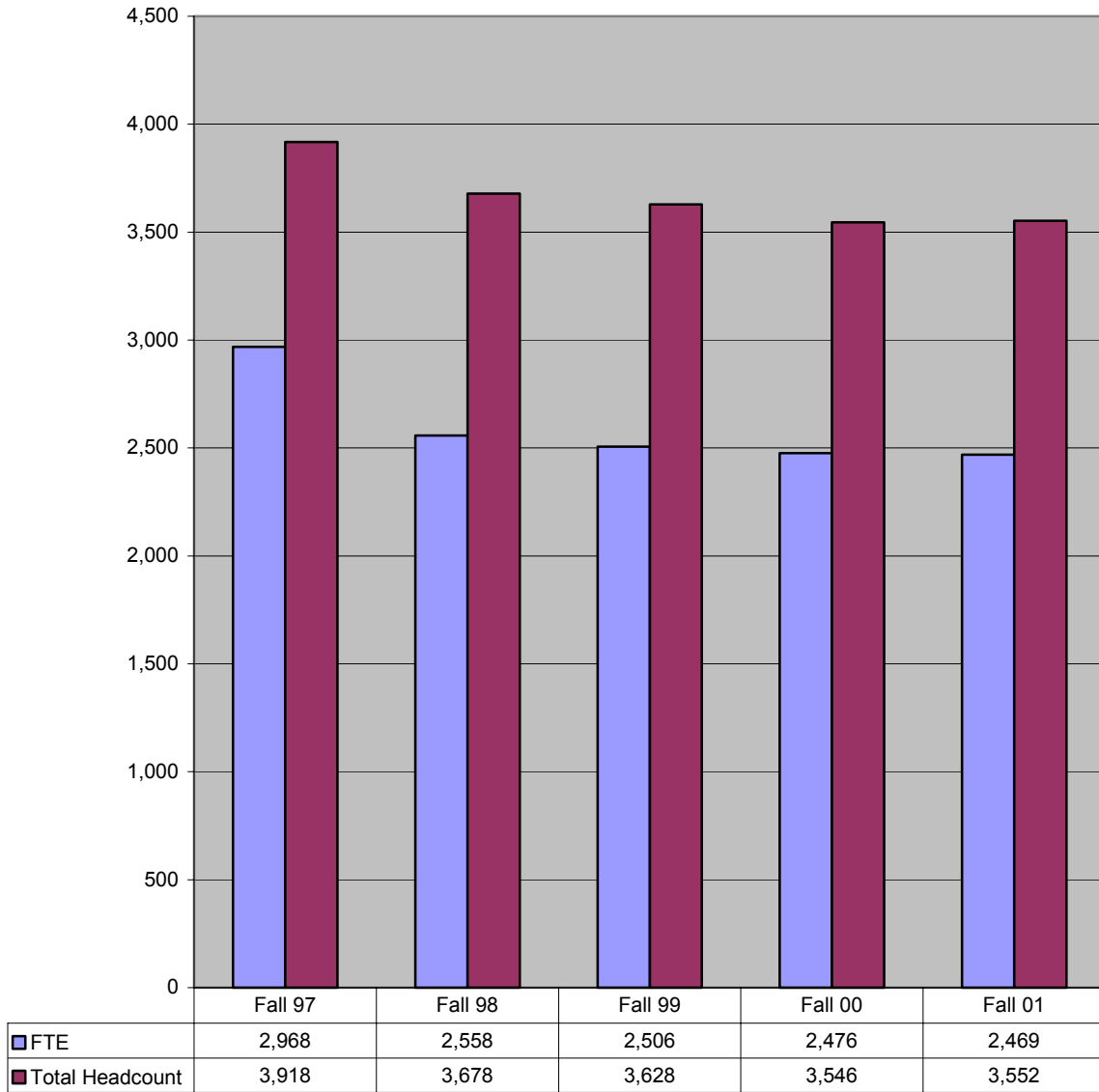
Headcount Enrollment by Student Level
Fall 01




 The portion of graduate students grew by 2 percentage points during the past five years.

Source: IPEDS Fall Enrollment Survey

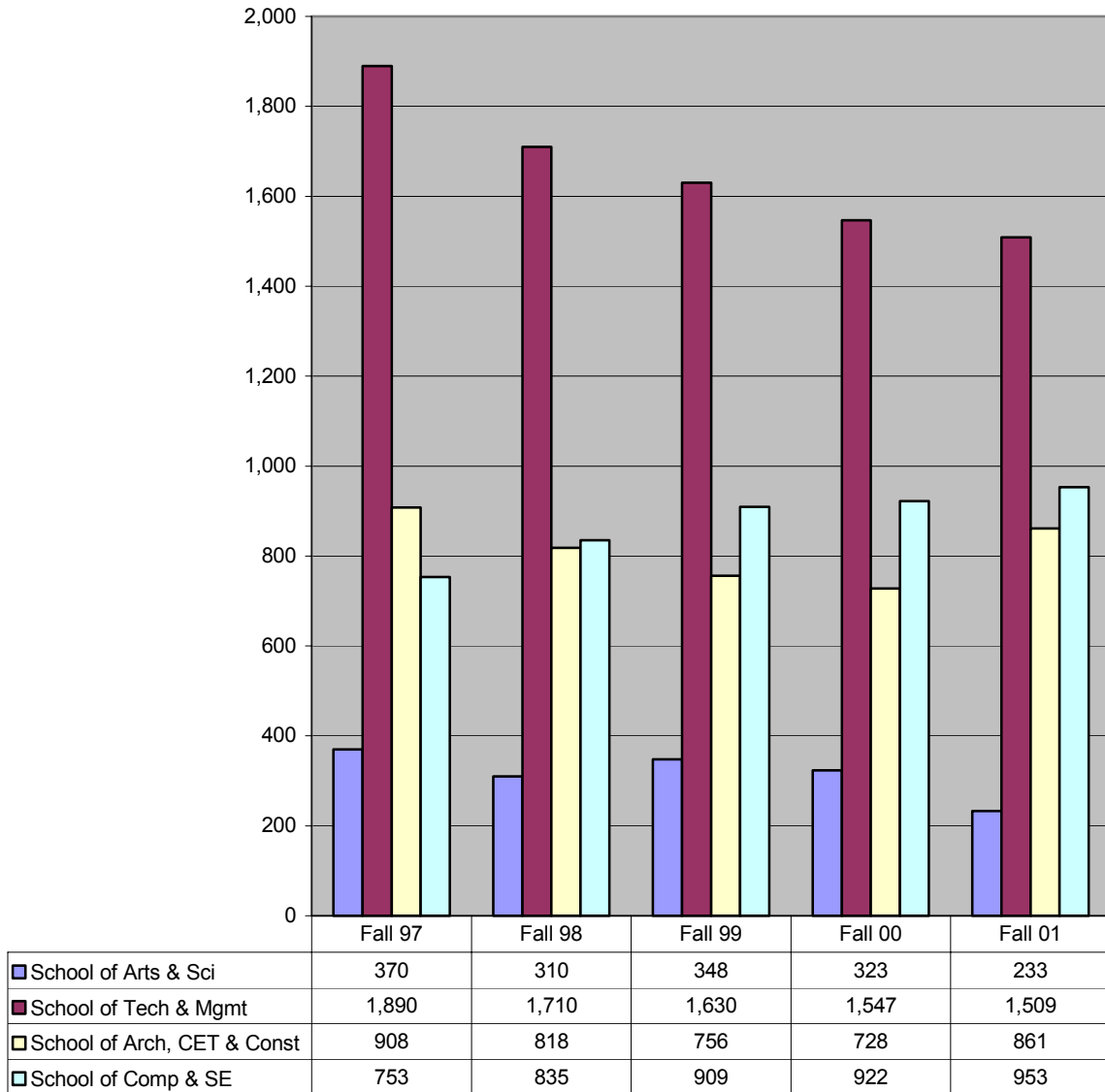
Headcount and FTE Enrollment Fall 97-01




 FTE has declined at a greater rate (17%) than headcount (9%) from Fall 97 to Fall 01.

Source: IPEDS Fall Enrollment Survey and USG SIRS Fall Enrollment Report

Enrollment by School Fall 97-01



 **The School of Computer Science and Software Engineering has grown by 26% over the past five years.**

Source: USG SIRS Fall Enrollment Report


Enrollment by Program Major Fall 97-01

	Fall 97	Fall 98	Fall 99	Fall 00	Fall 01
Total Fall Enrollment	3,921	3,673	3,643	3,520	3,535
Certificate	0	0	25	86	93
Apparel Product Development					1
Computer Programming			10	36	27
Computer Science (Post Bacc.)				21	29
Land Surveying					4
Pre-Software Systems Development			1	1	
Project Management					5
Quality Assurance (Post Bacc.)			1		2
Software Engineering (Post Bacc.)			13	8	5
Software Systems Development				20	20
Undergraduate	3,344	3,110	3,026	2,907	2,916
Apparel Engineering Technology	6	2	2	1	1
Apparel/Textile Engineering Technology	87	80	72	67	61
Applied Science	2	3	2		1
Architectural Engineering Technology	7	1			
Architecture	66	56	39	63	45
Civil Engineering Technology	400	329	291	241	257
Computer Engineering Technology	263	266	262	265	291
Computer Science	527	578	590	571	551
Construction	169	170	186	186	184
Electrical Engineering Technology	521	412	375	342	316
Environmental Development	24	17	4	3	
General Studies	192	145	149	151	151
Industrial Distribution	26	16	17	13	12
Industrial Engineering Technology	185	176	164	176	131
Information Technology					22
International Technical Communication					4
Management	98	147	163	156	162
Manufacturing	1	1	1		
Mathematics	28	25	26	29	24
Mechanical Engineering Technology	486	413	366	329	296
Physics	26	20	18	21	21
Pre-Architecture	175	179	172	173	203
Software Engineering					11
Surveying and Mapping	15	14	26	30	34
Technical and Professional Communication	31	39	54	41	55
Telecommunications Engineering Technology		15	44	47	82
Textile Engineering Technology	9	6	3	2	1

Enrollment by Program Major Fall 97-01

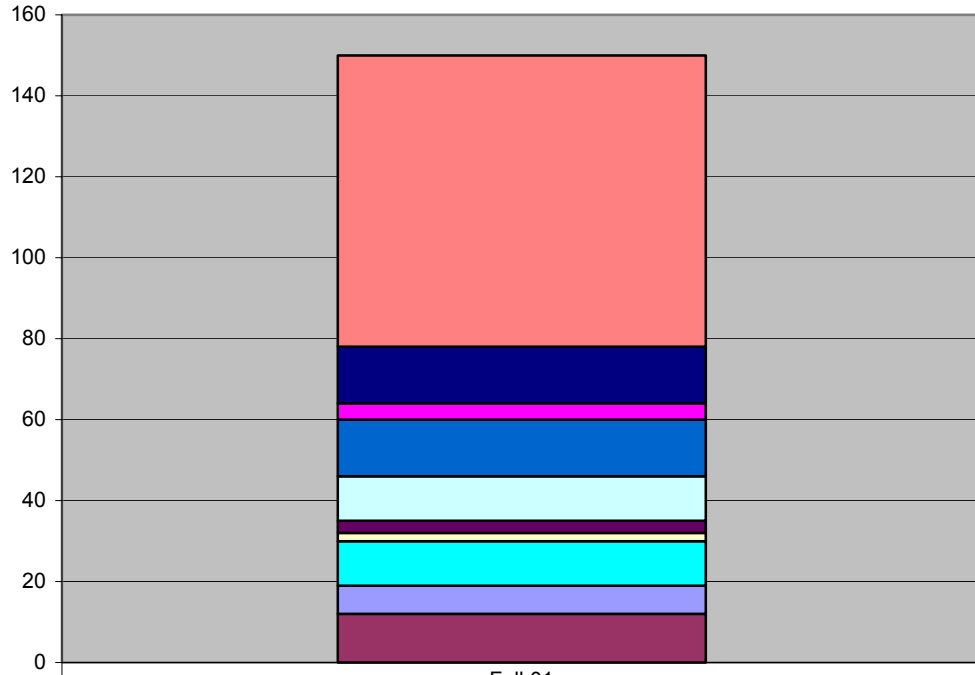
	Fall 97	Fall 98	Fall 99	Fall 00	Fall 01
Graduate	577	563	592	527	526
Computer Science	226	231	253	209	178
Construction	52	52	38	32	29
Engineering Technology-Elect	38	19	17	15	24
Engineering Technology-Qual Syst		4			
Information Technology				19	66
Management	101	70	69	53	39
Quality Assurance	67	80	72	81	83
Software Engineering		26	42	37	36
Technical and Professional Communication	93	81	101	81	71

 Of the 7 undergraduate programs that grew over the past five years, the 3 that grew the most were: Surveying and Mapping, Technical and Professional Communication, and Management.

 The graduate programs that grew over the past five years were: Quality Assurance and Software Engineering.

Source: SPSU Banner Report WSFR 0215

Certificate Enrollment by Place of Origin Fall 01

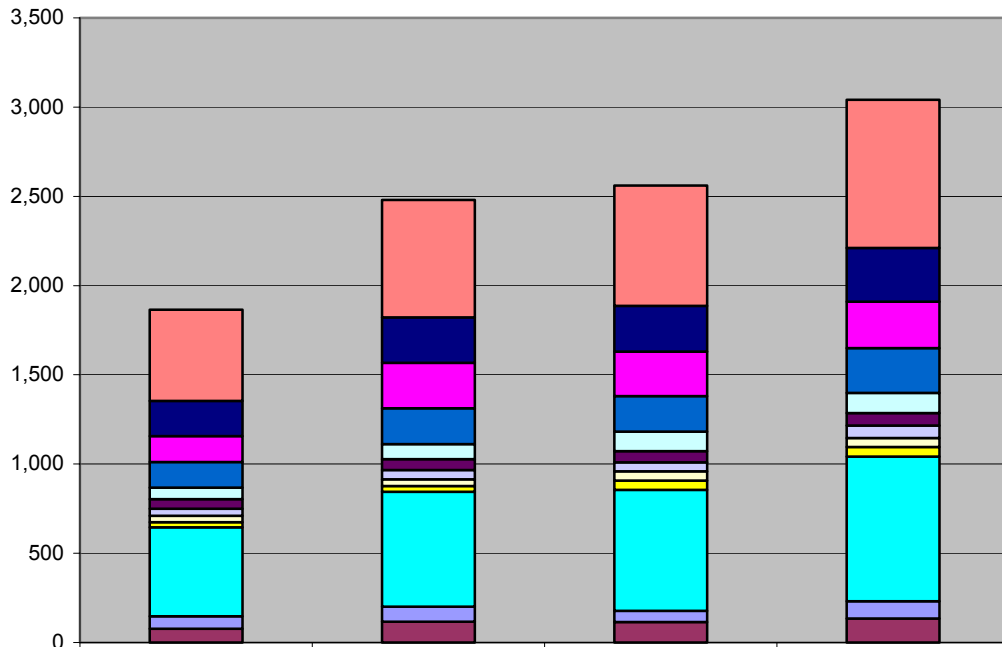


	Fall 01
■ Cobb	72
■ Fulton	14
■ Gwinnett	4
■ DeKalb	14
■ Cherokee	11
■ Clayton	3
■ Douglas	0
■ Bartow	2
■ Paulding	0
■ Other GA Counties	11
■ Other States	7
■ Other Countries	12

Cobb County supplied the most Certificate students in Fall 01.

Source: SPSU Banner

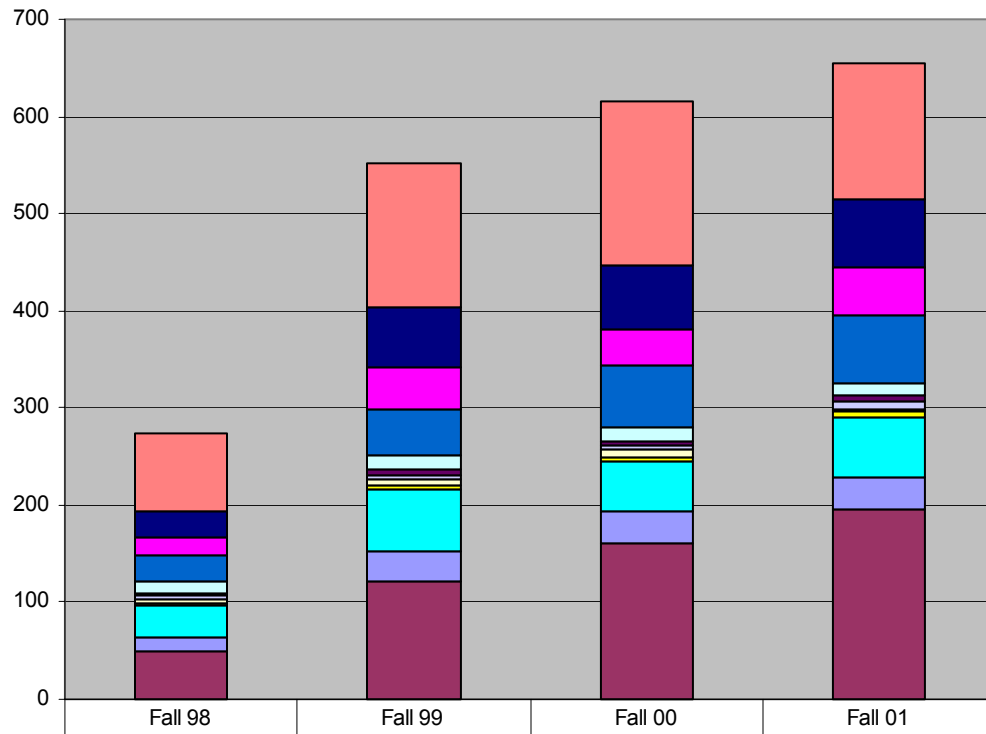
Undergraduate Enrollment by Place of Origin Fall 98-01



	Fall 98	Fall 99	Fall 00	Fall 01
■ Cobb	512	659	675	831
■ Fulton	196	254	257	301
■ Gwinnett	146	255	248	259
■ DeKalb	144	200	200	252
■ Cherokee	63	85	108	113
■ Clayton	54	60	63	70
■ Douglas	40	53	50	69
■ Bartow	35	38	52	51
■ Paulding	29	31	52	53
■ Other GA Counties	499	645	678	811
■ Other States	70	83	64	97
■ Other Countries	77	117	114	134

 Although Cobb County continues to provide the largest number of undergraduates, the largest growth during the past five years in undergraduate students came from Paulding, Cherokee, Gwinnett, and DeKalb Counties.

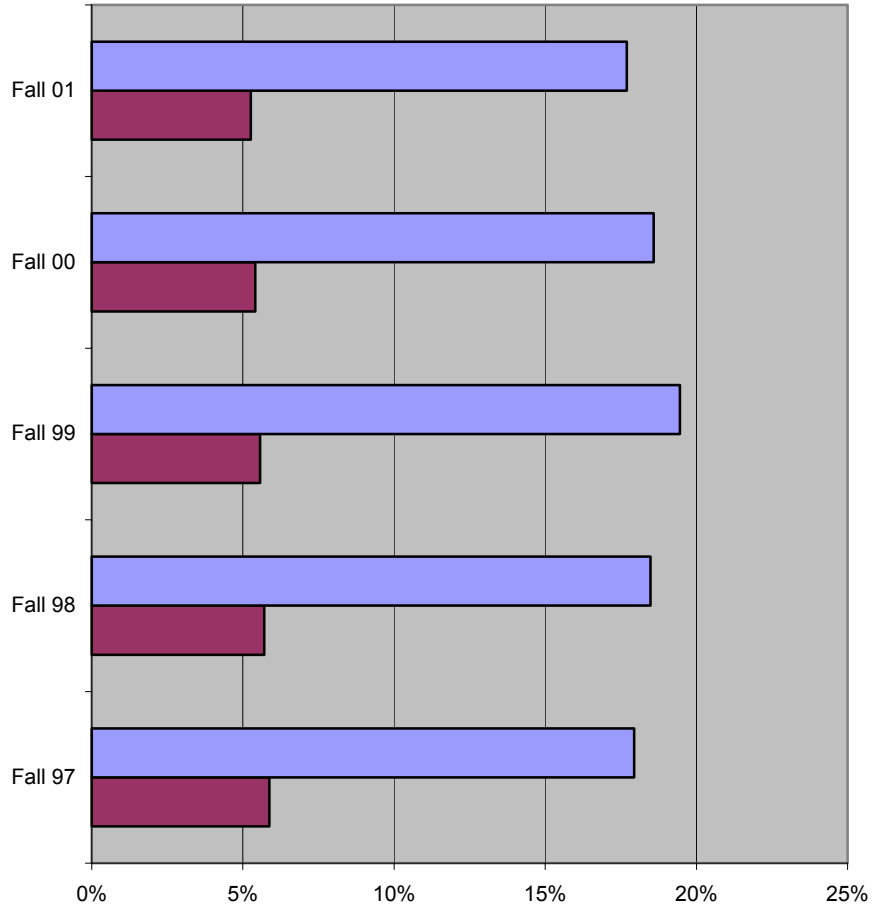
Graduate Enrollment by Place of Origin Fall 98-01



	Fall 98	Fall 99	Fall 00	Fall 01
Cobb	79	149	170	139
Fulton	28	61	66	71
Gwinnett	18	43	36	48
DeKalb	26	47	63	70
Cherokee	13	15	15	13
Clayton	1	6	4	6
Douglas	5	4	5	9
Bartow	4	7	8	2
Paulding	3	4	3	6
Other GA Counties	32	63	52	61
Other States	15	32	34	34
Other Countries	49	121	160	195

The rate of growth in international graduate students over the past five years was 4 times that of the rate of growth of graduate students from Cobb County, the next highest provider.

**SPSU's Contribution of International Students to USG State Universities
Fall 97-01**



	Fall 97	Fall 98	Fall 99	Fall 00	Fall 01
% SPSU Aliens to USG State Univ	17.9%	18.5%	19.5%	18.6%	17.7%
% SPSU Total Students to USG State Univ	5.9%	5.7%	5.6%	5.4%	5.3%

Although SPSU contributes an average 6% to the total enrollment of the USG State Universities, it contributes an average 18% of the international students.

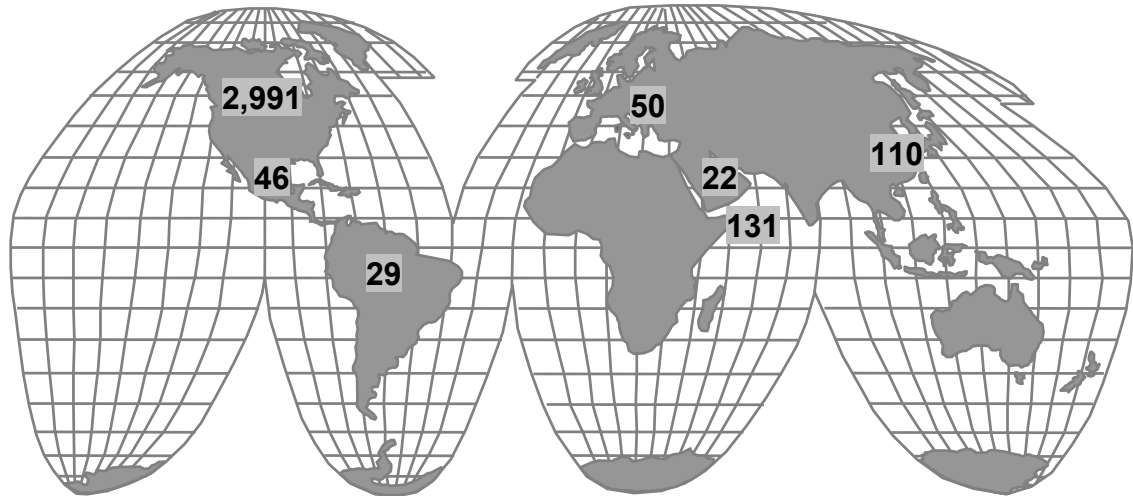
**Countries Contributing Largest Number of Students
Fall 2001**

Country	Most Undergrads	Country	Most Grads
India	35	India	88
Vietnam	21	China	83
Nigeria	20	Turkey	4
Kenya	17	Ethiopia	4
Jamaica	15	Thailand	4
Canada	11		
Mexico	11		
Ethiopia	9		
Pakistan	8		
Cameroon	7		
Iran	7		
Trinidad and Tobago	6		
Zimbabwe	6		
Lebanon	5		
United Kingdom	5		


 In Fall 98, the top 3 providers of international undergraduate students were India, Nigeria and China. But by Fall 01, undergraduate students from China barely exist.

 In Fall 01, India passed China as the top provider of international graduate students.

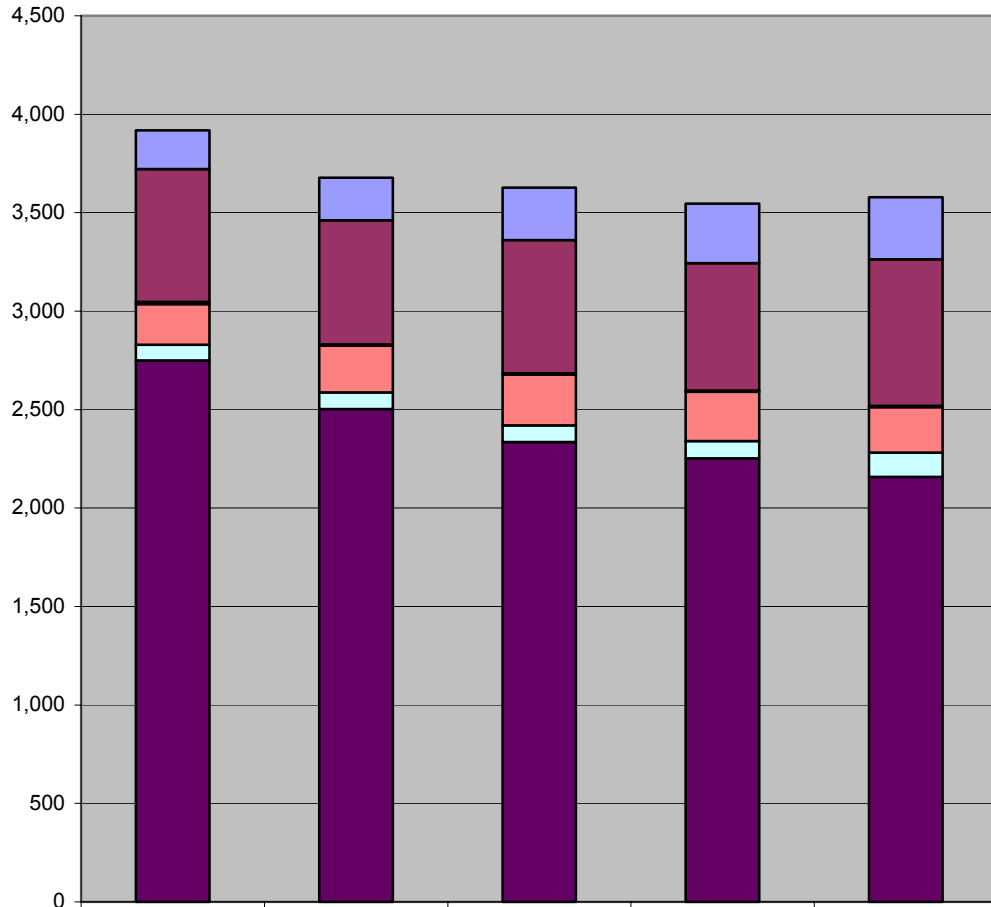
Students Contributed by Region Fall 2001




Region	Certificate	Undergrads	Grads	Total
Africa	2	97	32	131
Asia	9	94	167	270
Central America/Caribbean	2	40	4	46
Europe/Former Soviet Union	0	35	15	50
Middle East	0	19	3	22
US/Canada	81	2,613	297	2,991
South America	0	23	6	29
Total	94	2,921	524	3,539

 Over the past five years, enrollment of students from Africa has increased by 66% and enrollment of students from the US and Canada has decreased by 7%. This trend is similar to enrollment of US citizens by race.

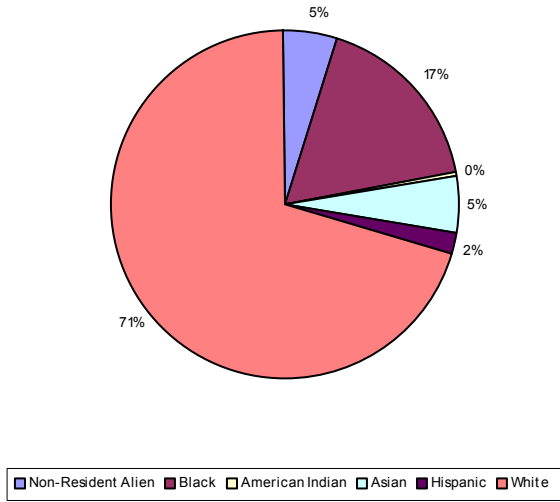
Headcount Enrollment by Race Fall 97-01



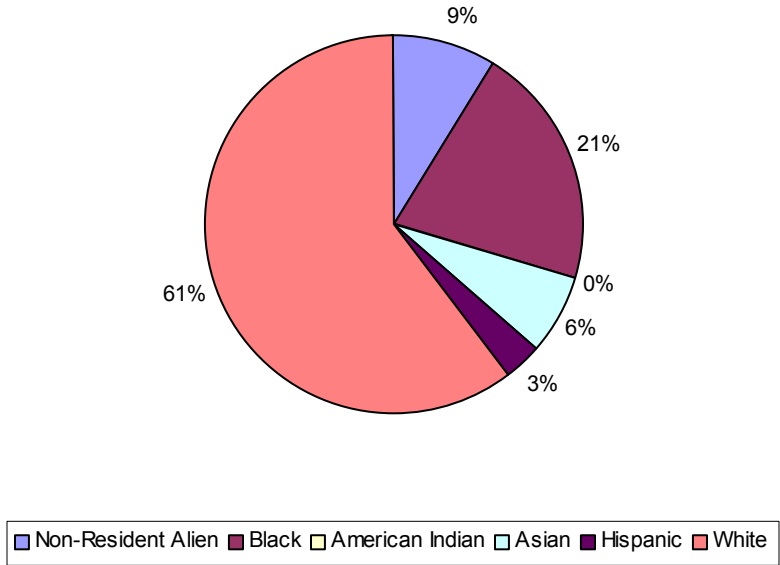
	Fall 97	Fall 98	Fall 99	Fall 00	Fall 01
Non-Resident Alien	196	217	267	302	316
Black	675	630	676	647	744
American Indian	11	7	6	7	7
Asian	207	236	259	250	231
Hispanic	79	86	85	88	123
White	2,750	2,502	2,335	2,252	2,158

 In the past year, Hispanic enrollment increased by 40% (note that resident aliens are counted in this category).

Headcount Enrollment by Race
Fall 97

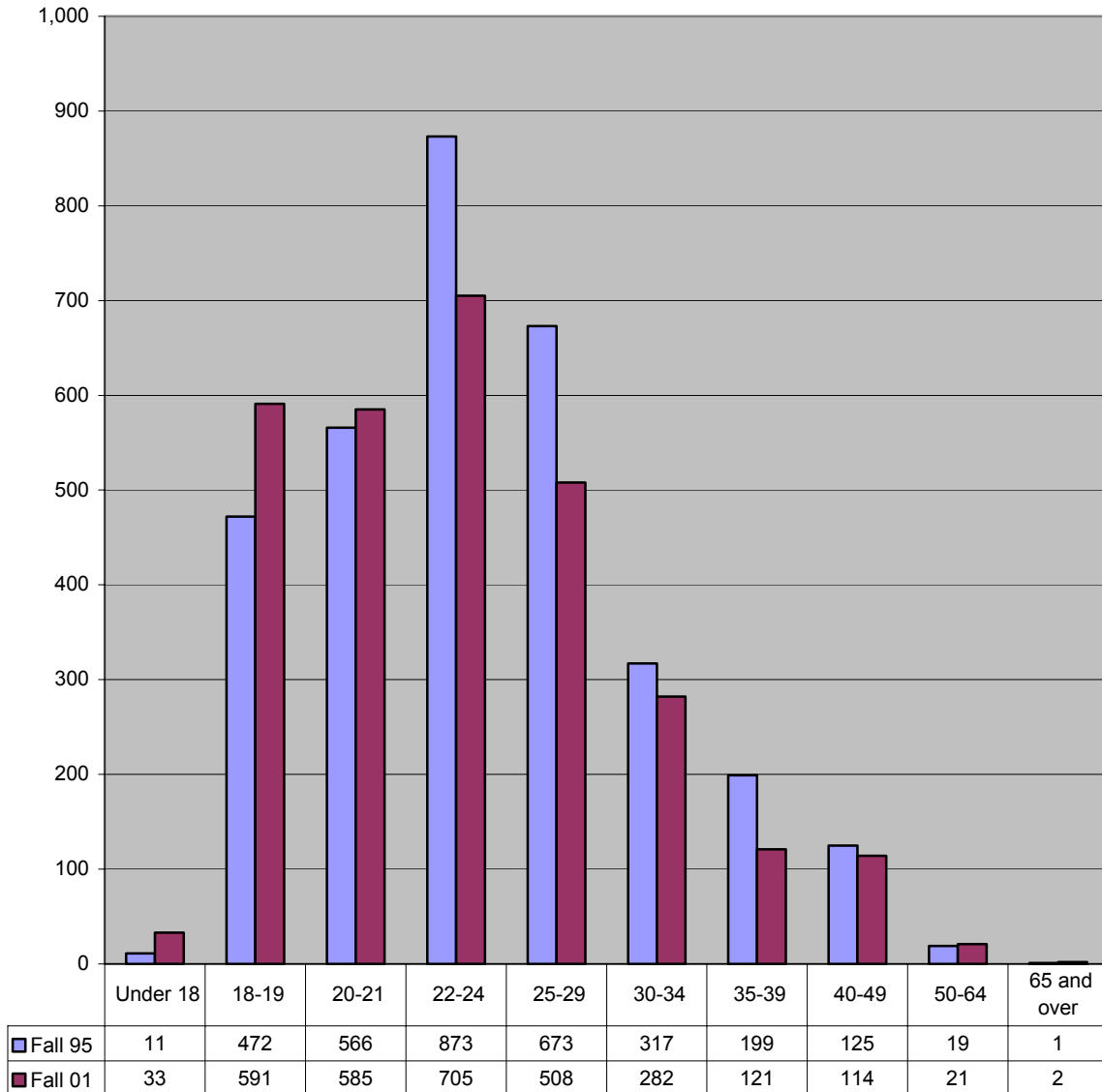


Headcount Enrollment by Race
Fall 01



 In the past five years, the proportion of White enrollment declined by 10 percentage points (note that resident aliens are counted in this category).

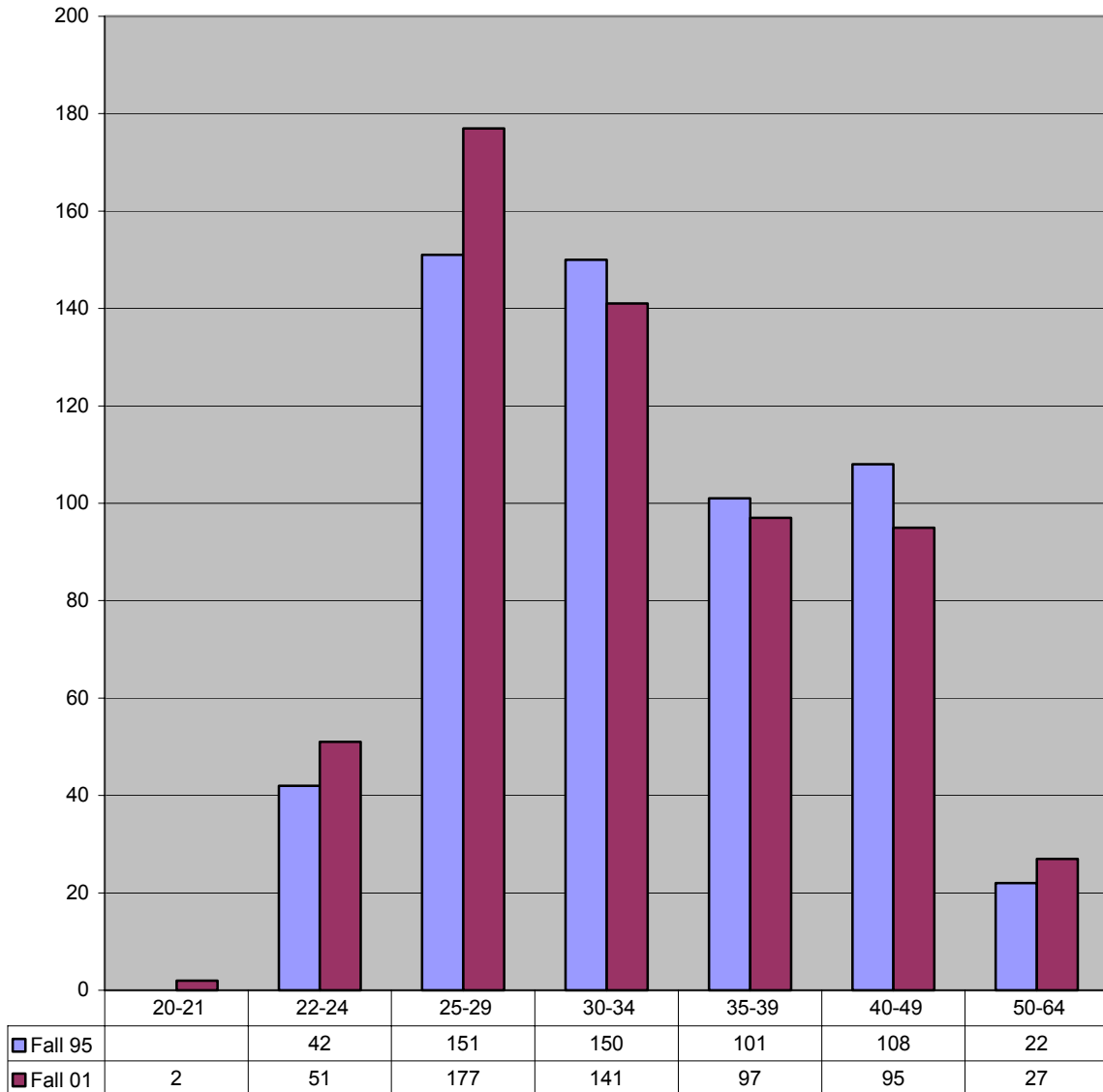
Distribution of UG Students by Age Fall 95-01




 The number of undergraduate students 25 years and older has decreased by 21% over the past five years.

Source: IPEDS Fall Enrollment Survey

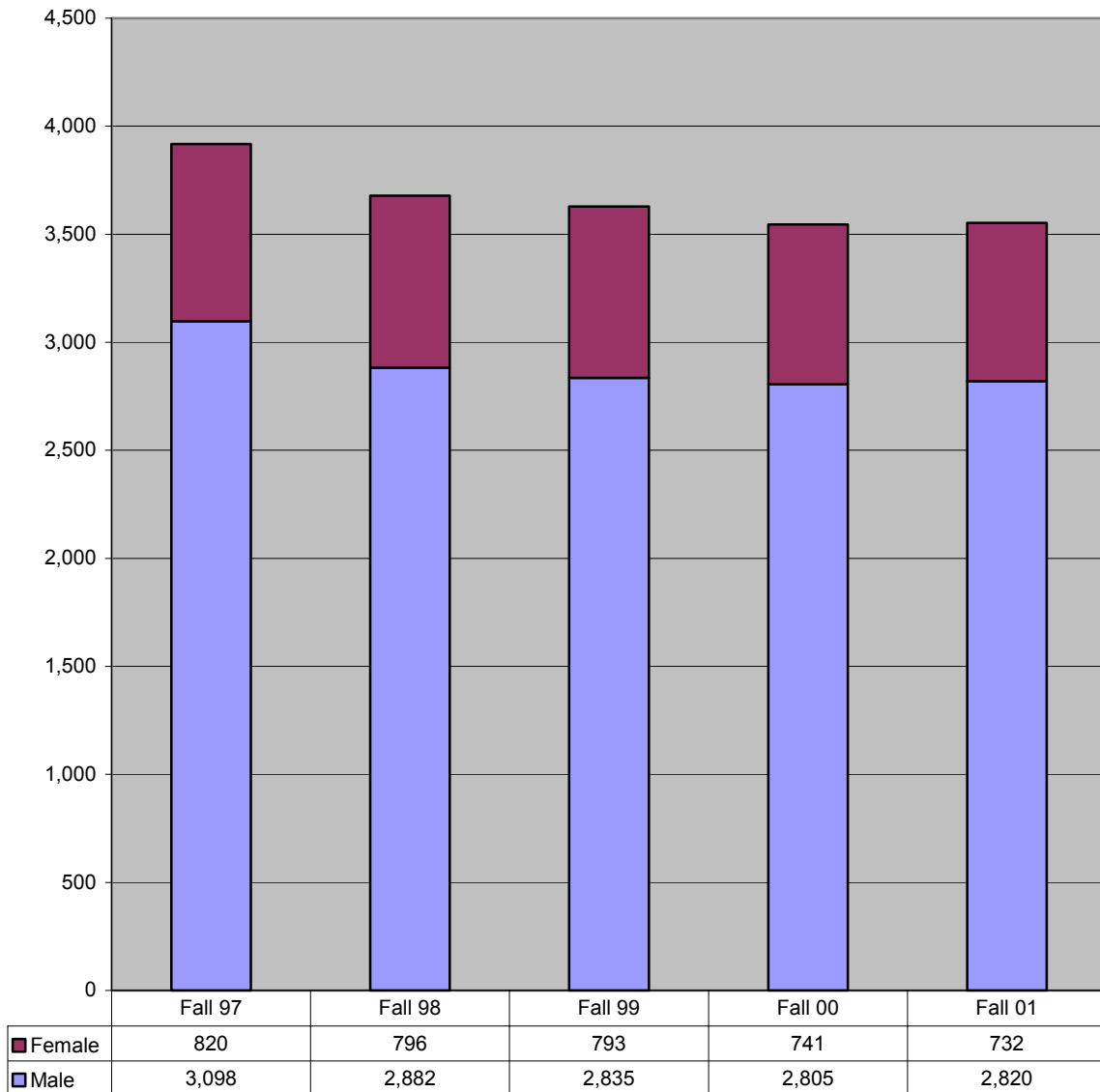
Distribution of Grad Students by Age Fall 95-01




 The number of grad students 25 years and older has increased by 1% over the past five years.

Source: IPEDS Fall Enrollment Survey

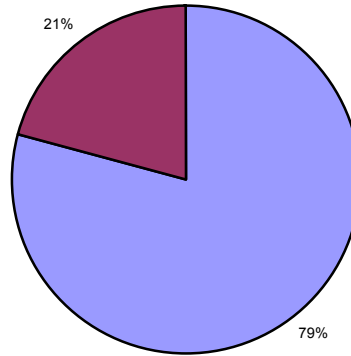
Headcount Enrollment by Gender Fall 97-01



 Female enrollment dropped by 11% over the past five years, while male enrollment dropped by 9% over the same period.

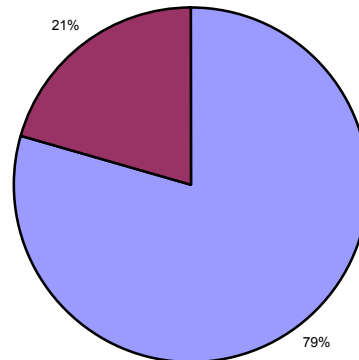
Sources: IPEDS Fall Enrollment Survey

Headcount Enrollment by Gender Fall 97



Male Female

Headcount Enrollment by Gender Fall 01

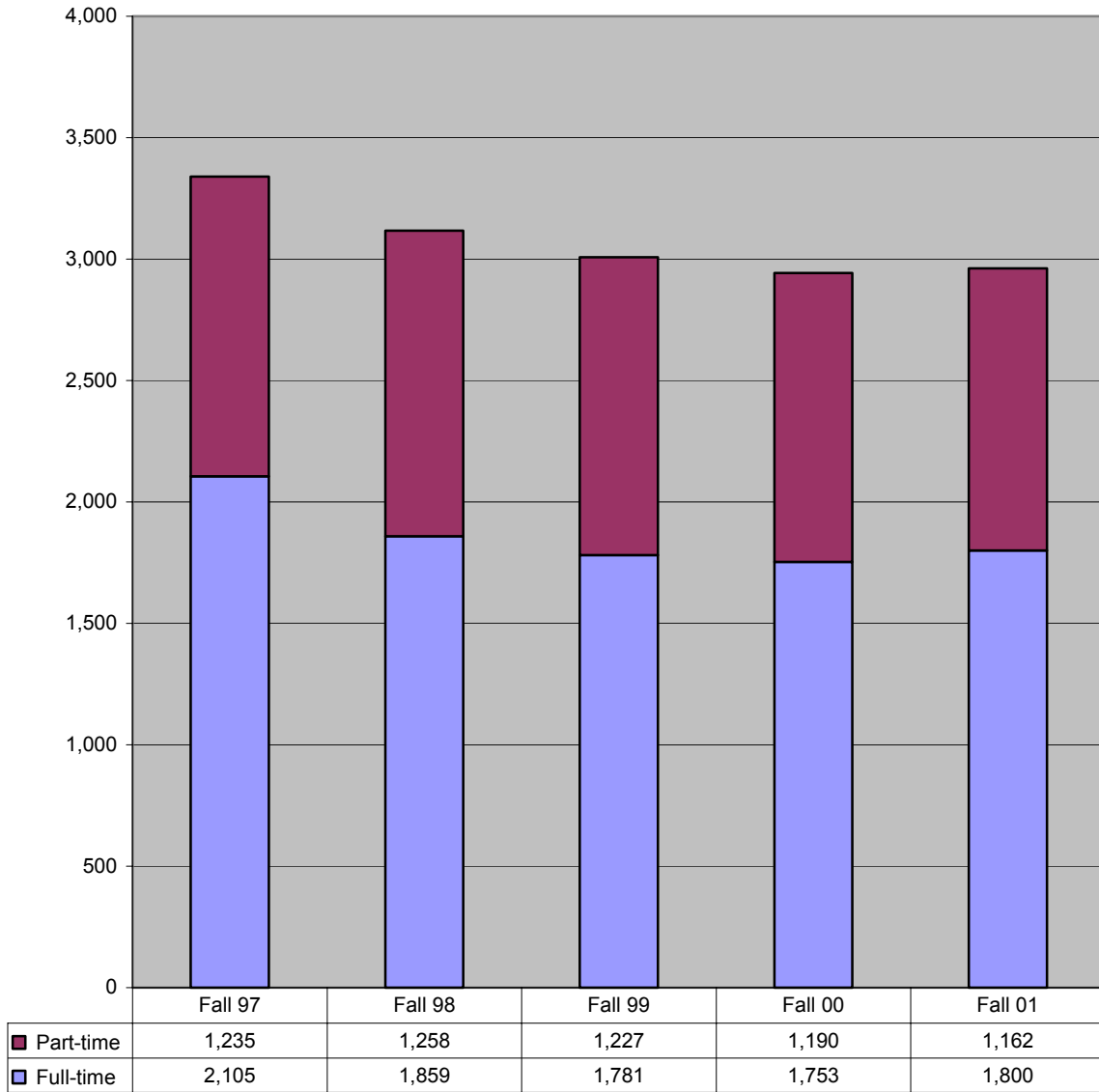


Male Female

 The proportion of males to females has stayed the same for the last five years.

Sources: IPEDS Fall Enrollment Survey

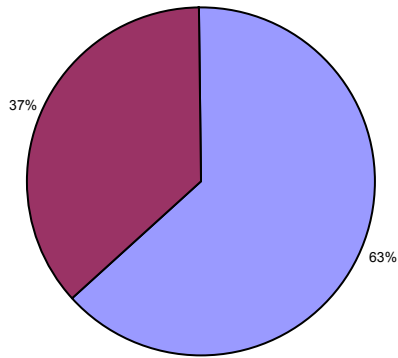
Undergraduate Headcount Enrollment by Status Fall 97-01



 Over the past five years, full-time undergraduate enrollment declined by 15% and part-time undergraduate enrollment declined by 6%.

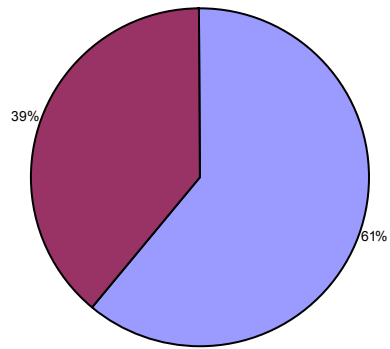
Source: IPEDS Fall Enrollment Survey

Undergraduate Headcount Enrollment by Status
Fall 97




■ Full-time ■ Part-time

Undergraduate Headcount Enrollment by Status
Fall 01

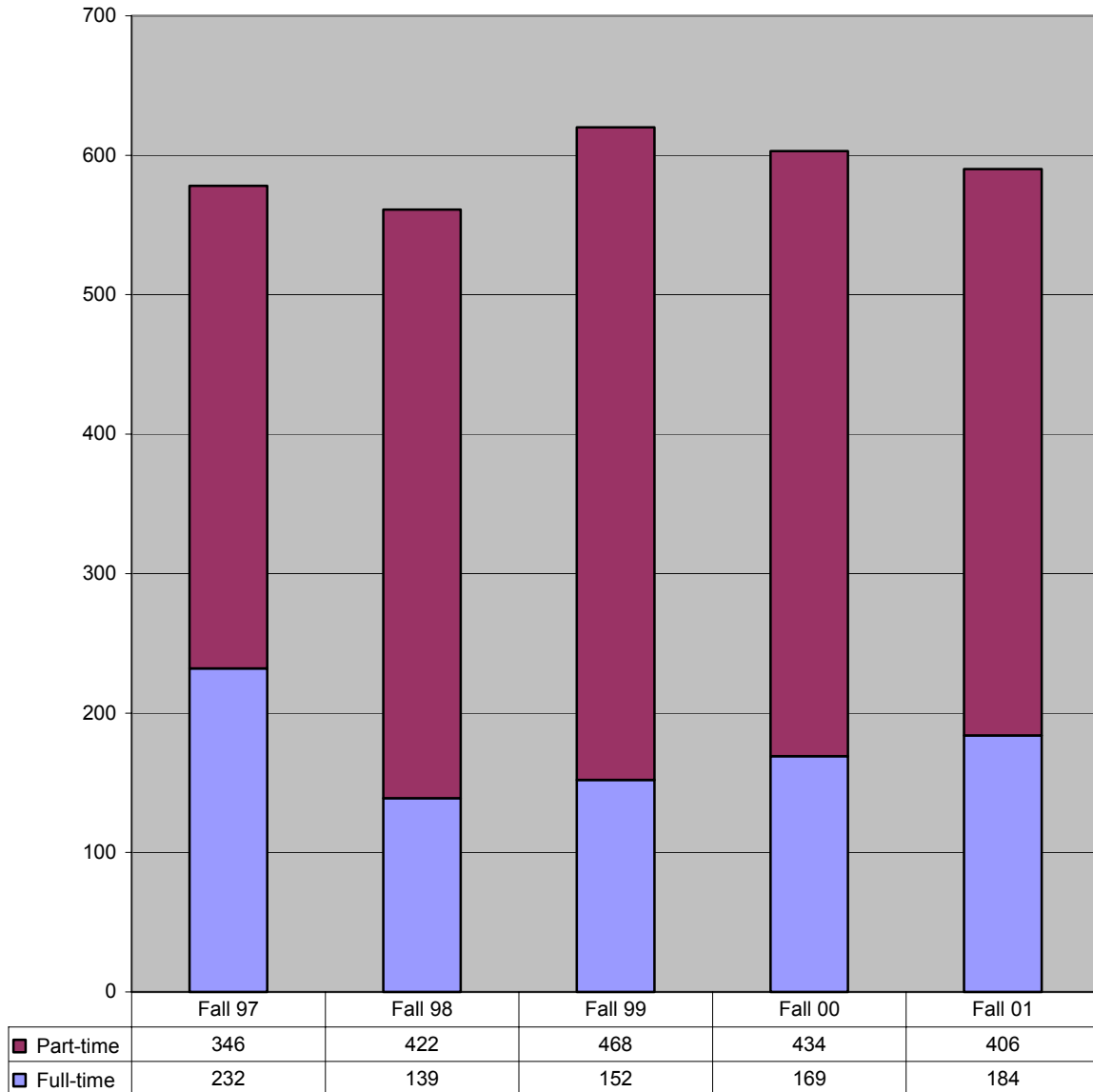



■ Full-time ■ Part-time

 Over the past five years, the proportion of part-time undergraduate students grew by 2 percentage points.

Source: IPEDS Fall Enrollment Survey

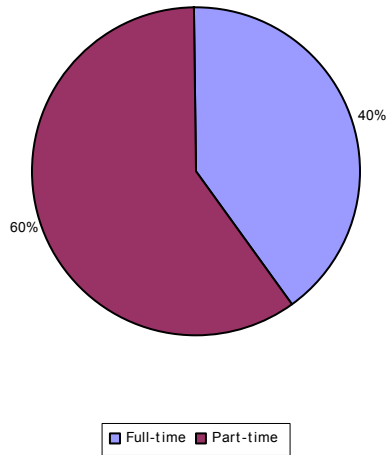
**Graduate Headcount Enrollment by Status
Fall 97-01**



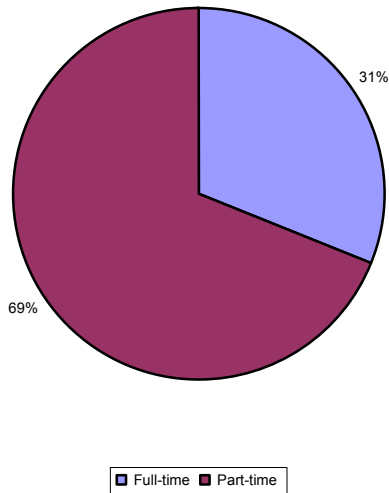
 **Over the past five years, full-time graduate enrollment declined by 21% while part-time graduate enrollment grew by 17%.**

Source: IPEDS Fall Enrollment Survey

Graduate Headcount Enrollment by Status
Fall 97



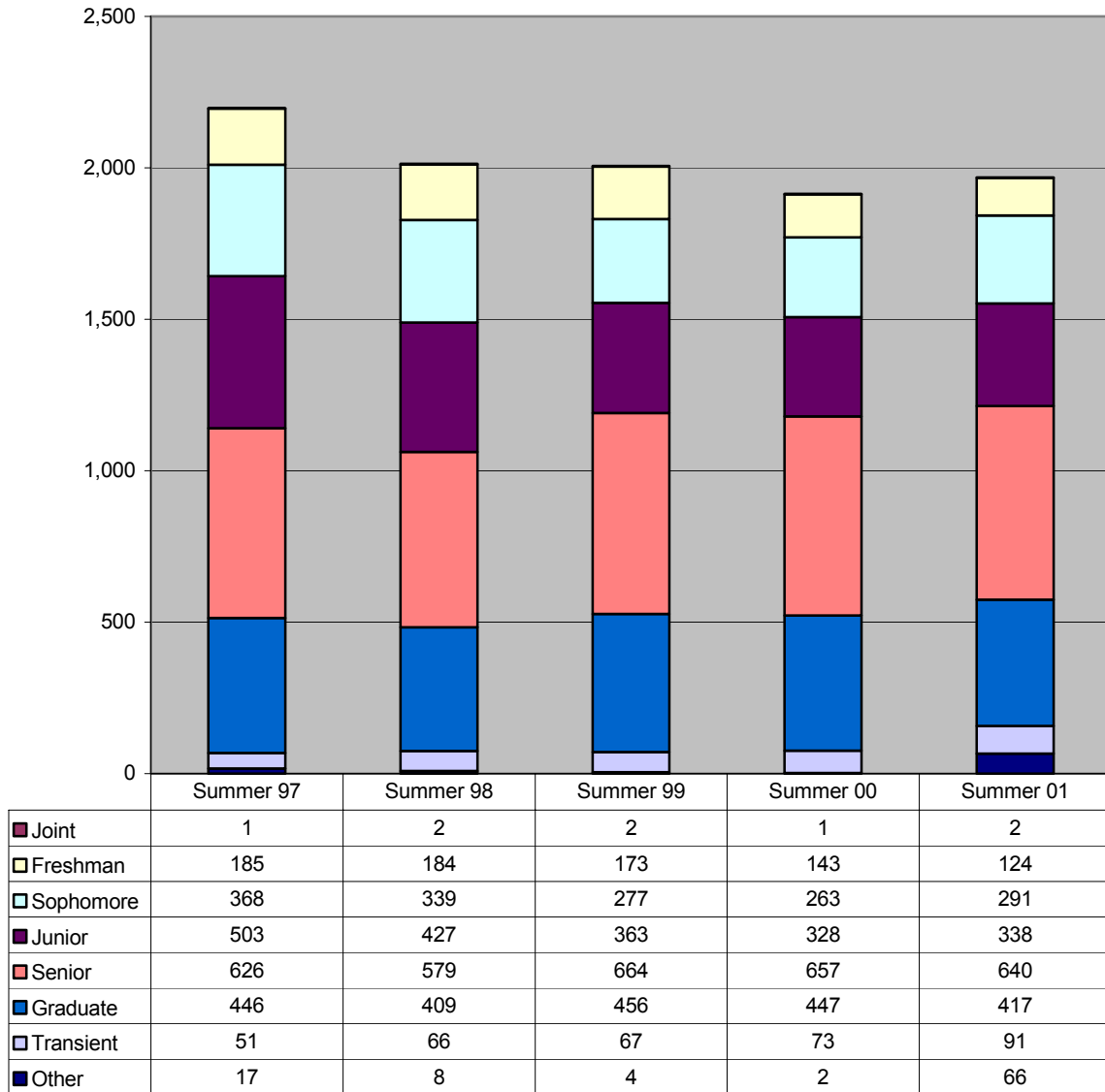
Graduate Headcount Enrollment by Status
Fall 01




 Over the past five years, the proportion of part-time graduate students grew by 2 percentage points.

Source: IPEDS Fall Enrollment Survey

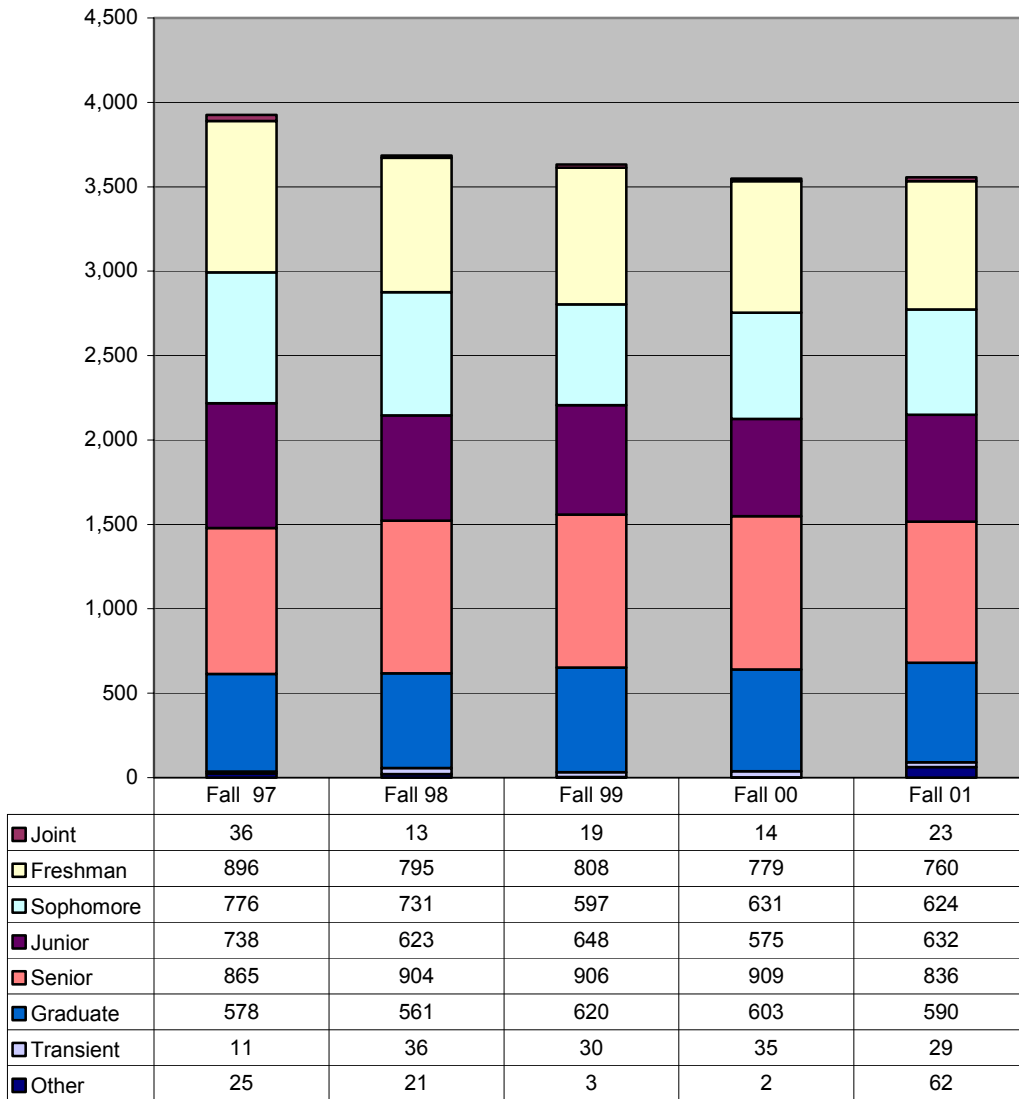
Total Enrollment by Student Type Summer 97-01



“Other” includes students who already have a bachelors degree but are enrolled in ug courses, and auditors.

 **During the summer terms, seniors increased over the past five years by 2%, while other regular student categories decreased.**

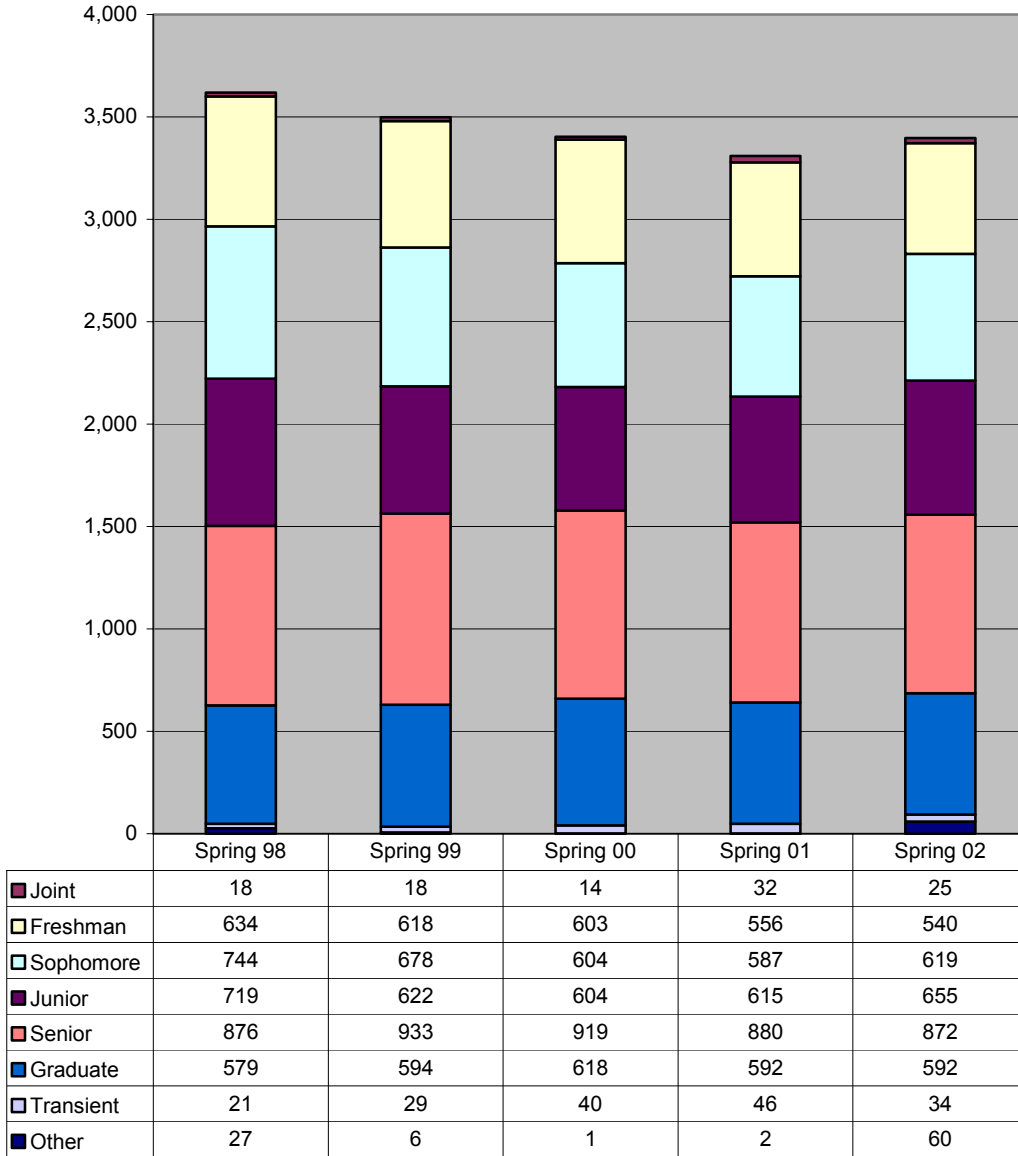
Total Enrollment by Student Type Fall 97-01



“Other” includes students who already have a bachelors degree but are enrolled in ug courses, and auditors.

 During the fall terms, graduate students increased over the past five years by 2%, while other regular student categories decreased.

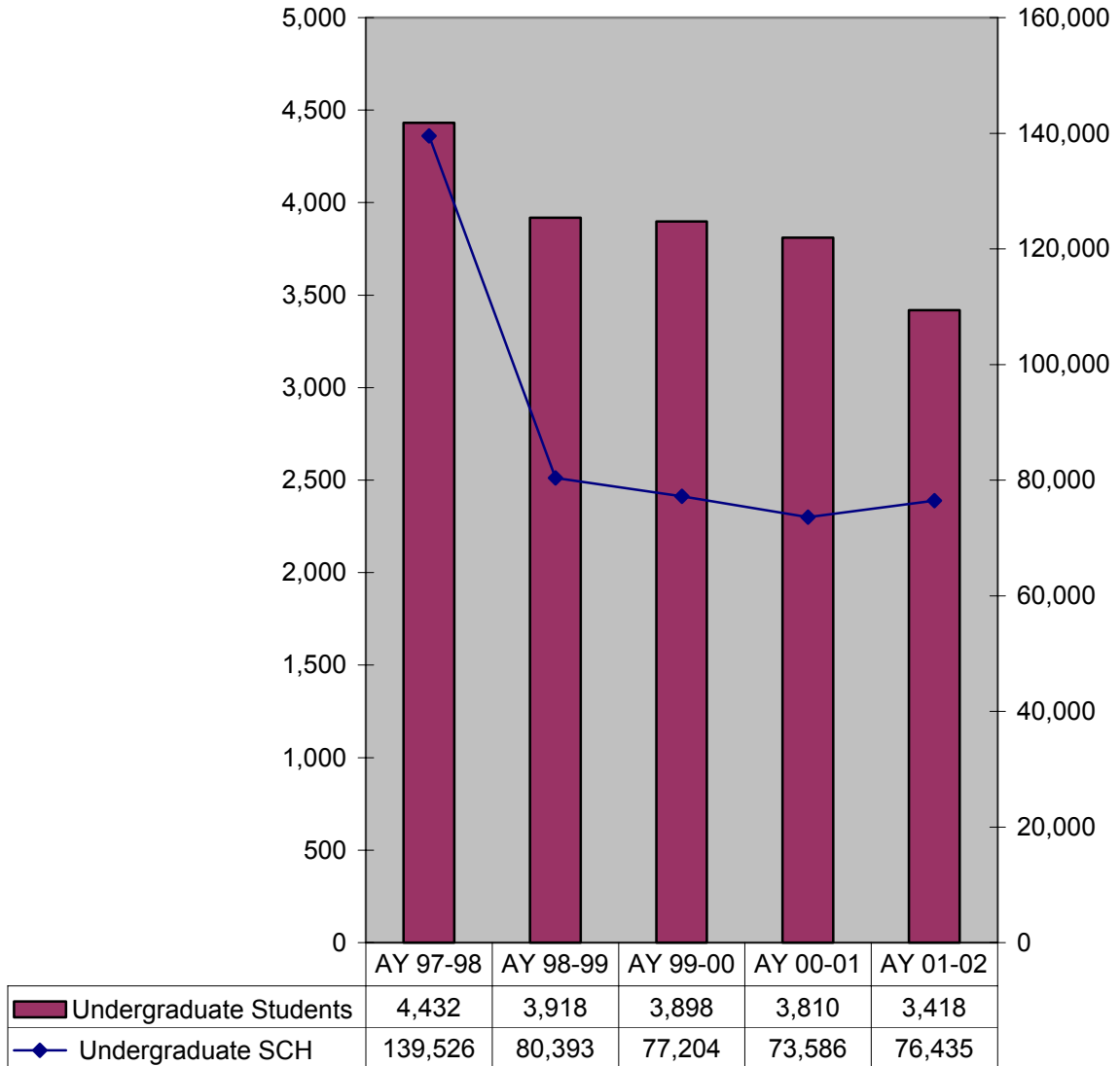
Total Enrollment by Student Type Spring 98-02



“Other” includes students who already have a bachelors degree but are enrolled in ug courses, and auditors.

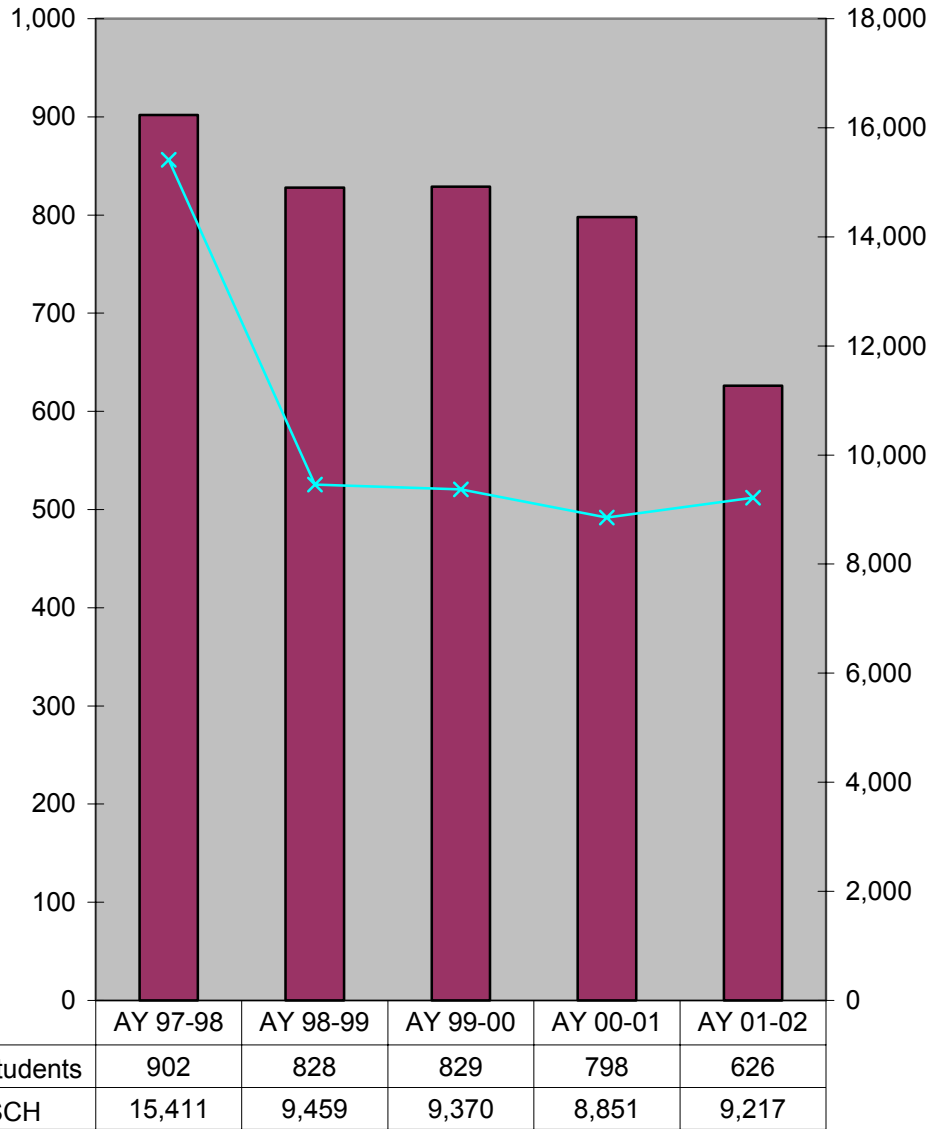
 **During the spring terms, graduate students increased over the past five years by 2%, while other regular student categories decreased.**


Undergraduate Students vs UG Student Credit Hours AY 98-02



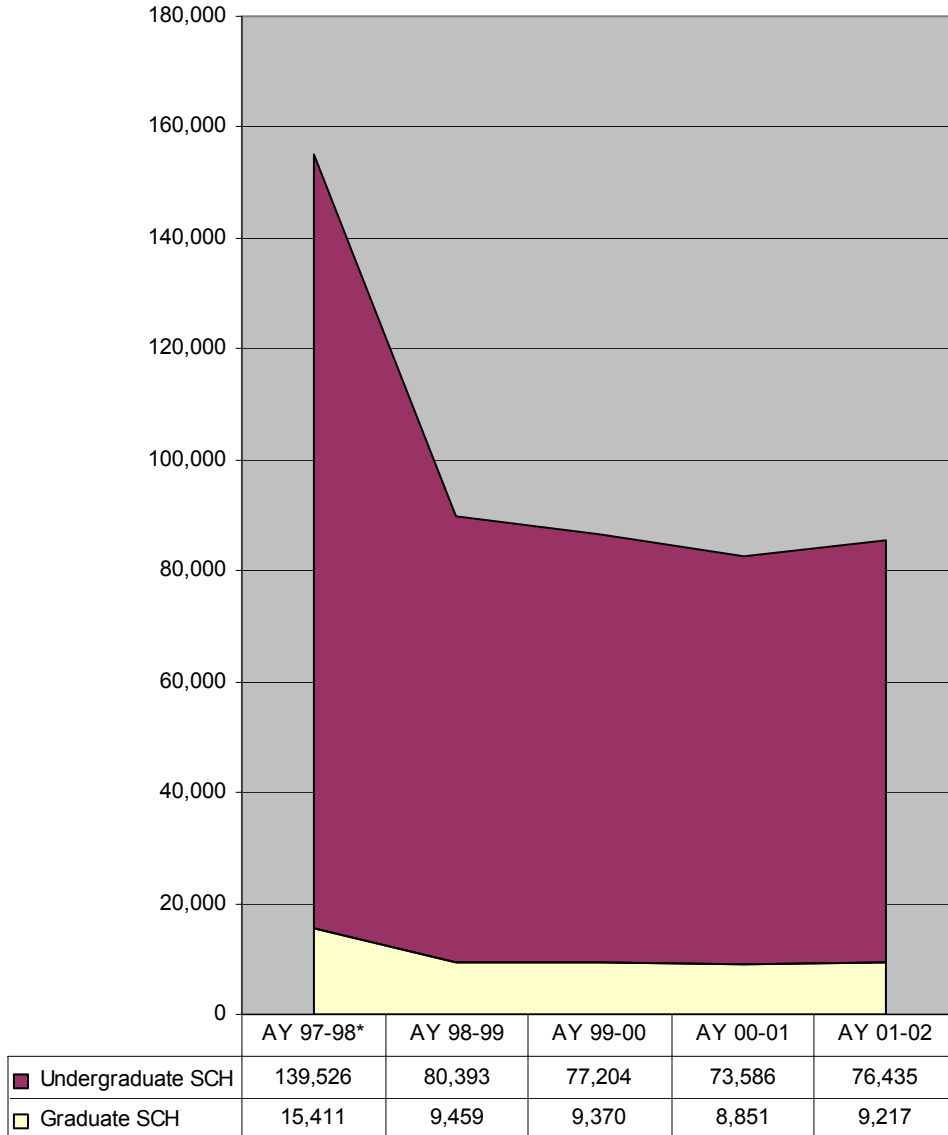
 While undergraduate student credit hours decreased by 45%, the number of undergraduate students only decreased by 23% over the past five years.

Graduate Students vs Student Credit Hours AY 98-02




 While graduate student credit hours decreased by 40%, the number of graduate students only decreased by 31% over the past five years.

Student Credit Hours by Level AY 97-01



*Last academic year which included a Winter term.

 Graduate student credit hours declined by 40%, while undergraduate student credit hours declined by 45% over the past five years.

Source: USG Curriculum Inventory Report

Top Feeder Institutions of Transfer Students by School AY 01-02

SPSU		Arts & Sci	
Georgia Institute of Technology	50	Georgia Perimeter	3
Georgia Perimeter College	33	Georgia State University	3
Kennesaw State University	29	Georgia Southern University	3
Georgia Southern University	27		
Georgia State University	24	Arch/CET/Const	
Floyd College	19	Georgia Southern University	8
Gainesville College	17	Floyd College	7
Chattahoochee Technical Institute	16	Georgia Institute of Technology	7
West Georgia	16	Kennesaw State University	7
Atlanta Metropolitan College	15	State University of West Georgia	7
Foreign Colleges	14	Auburn University	6
University of Georgia	11	Gainesville College	6
Auburn University	11	University of Georgia	5
Dalton College	10	Georgia Perimeter College	3
Gordon College	9	Georgia Military College	3
Clayton State College	8	Georgia State University	3
Middle Georgia College	7		
Dekalb Technical Institute	6	Eng Tech/Mgt	
Georgia Military College	6	Georgia Institute of Technology	20
North Georgia College	6	Georgia Perimeter College	17
Darton College	5	Kennesaw State University	14
DeVry Institute	5	Chattahoochee Technical Institute	10
Gwinnett Technical	5	Floyd College	7
Reinhardt College	5	Gainesville College	7
Valdosta State University	5	Georgia State University	7
Tennessee State University	5	Foreign Colleges	6
Chattanooga State Technical	5	Gordon College	6
Truett McConnell College	3	Middle Georgia College	6
Coastal Georgia College	3	Darton College	5
Berry College	3	Georgia Southern University	5
		Atlanta Metropolitan College	4
		Dalton State College	4
Computing/SE			
Georgia Institute of Technology	13	DeVry Institute	4
Atlanta Metropolitan College	10	Reinhardt College	4
Georgia Southern University	8	Valdosta State College	4
Georgia Perimeter College	7	State University of West Georgia	4
Georgia State University	7	Augusta Technical Institute	3
University of Georgia	5	Clayton State College	3
Floyd College	4	Dekalb Technical Institute	3
Foreign College	4		
Auburn University	3		
Chattahoochee Technical Institute	3		
Kennesaw State University	3		

Data shown for feeder institutions sending 3 or more students
Source: SPSU Banner

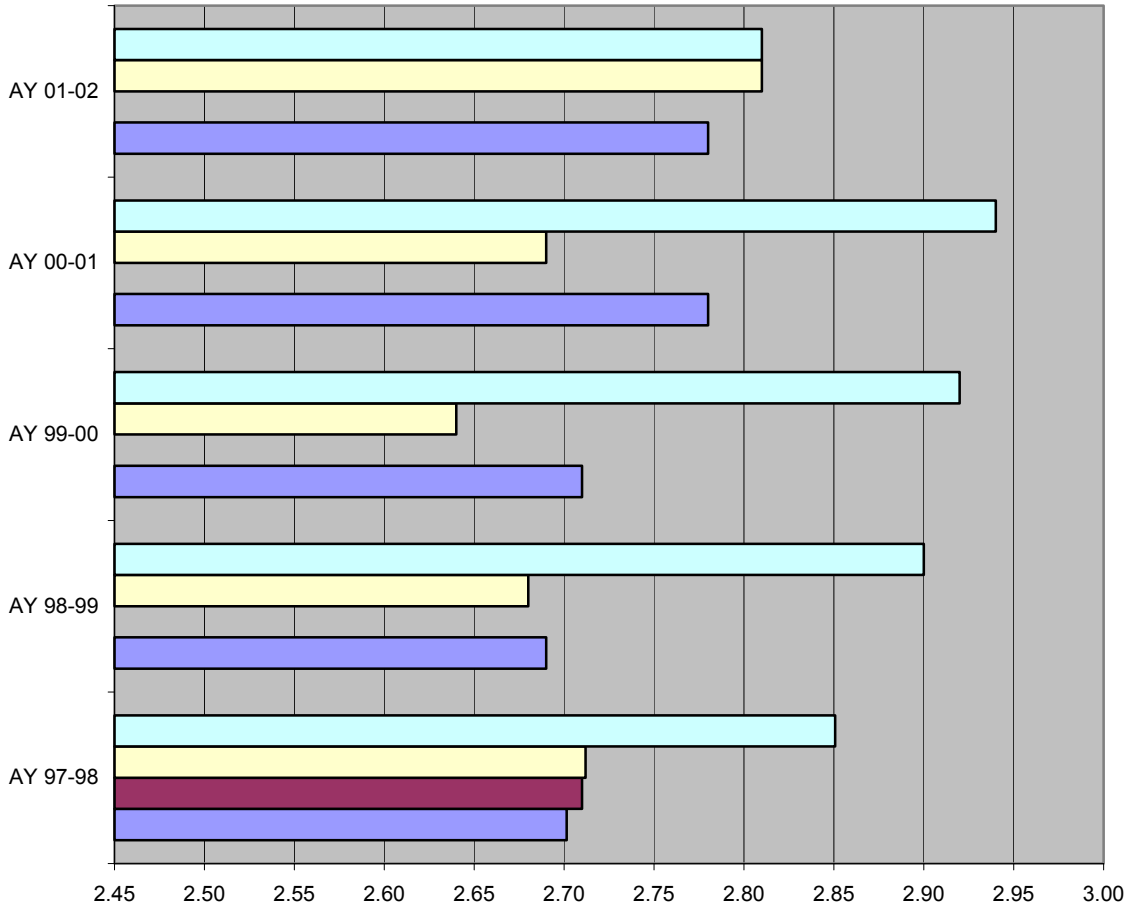
Grade Distribution by Term AY 97-01

	Percent	Percent	Percent	Percent	Percent	Percent	Average
	A's	B's	C's	D's	F's	Other*	GPA
AY 97-98							
Summer	30.2%	28.1%	16.1%	5.5%	5.1%	14.9%	2.85
Fall	26.2%	28.1%	18.8%	5.8%	6.5%	14.6%	2.71
Winter	26.3%	28.5%	18.4%	6.0%	6.6%	14.1%	2.71
Spring	25.8%	28.0%	17.8%	6.3%	6.6%	15.4%	2.70
AY 98-99							
Summer	30.0%	31.0%	17.0%	4.0%	4.0%	14.0%	2.90
Fall	25.0%	27.0%	18.0%	6.0%	7.0%	16.0%	2.68
Spring	25.0%	27.0%	17.0%	6.0%	7.0%	16.0%	2.69
AY 99-00							
Summer	31.0%	29.0%	17.0%	4.0%	4.0%	13.0%	2.92
Fall	25.0%	27.0%	17.0%	6.0%	8.0%	15.0%	2.64
Spring	27.0%	26.0%	17.0%	6.0%	8.0%	15.0%	2.71
AY 00-01							
Summer	33.0%	28.0%	14.0%	4.0%	5.0%	15.6%	2.94
Fall	27.0%	27.0%	18.0%	6.0%	8.0%	15.5%	2.69
Spring	30.0%	27.0%	16.0%	5.0%	7.0%	15.3%	2.78
AY 01-02							
Summer	30.0%	27.0%	16.0%	5.0%	6.0%	14.0%	2.81
Fall	30.0%	29.0%	17.0%	5.0%	6.0%	12.0%	2.81
Spring	30.0%	28.0%	17.0%	5.0%	7.0%	13.0%	2.78
*I, IP, K, NR, S, U, V, W, WF							




Over the past five years, the distribution of grades has remained quite stable.

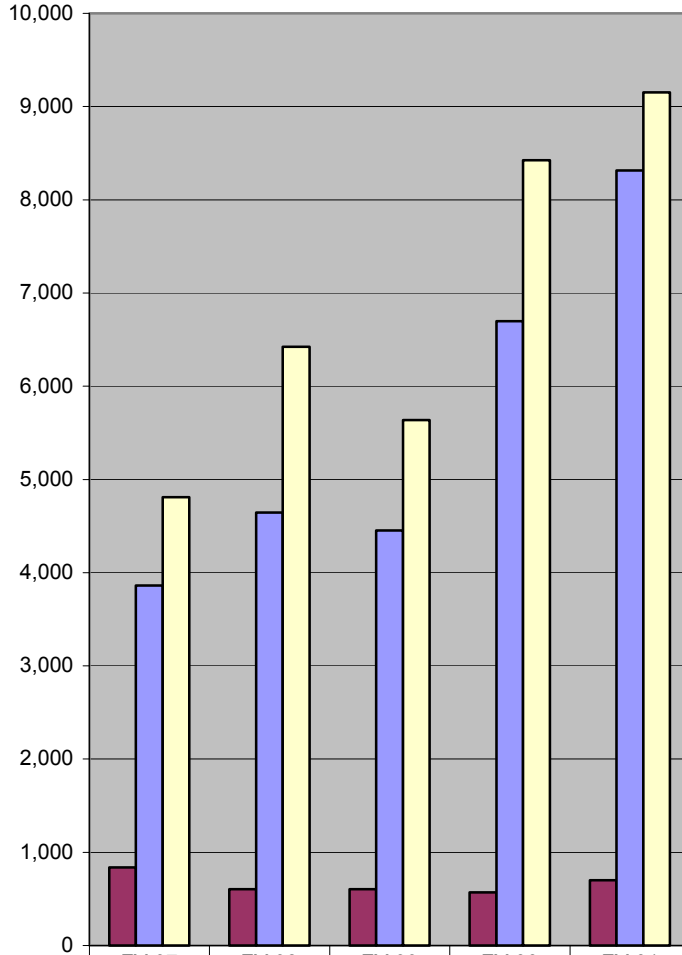
Average GPA by Term AY 97-01



	AY 97-98	AY 98-99	AY 99-00	AY 00-01	AY 01-02
Summer	2.85	2.90	2.92	2.94	2.81
Fall	2.71	2.68	2.64	2.69	2.81
Winter	2.71				
Spring	2.70	2.69	2.71	2.78	2.78

 Over the past five years, the average gpa for summer decreased by 1%, the average gpa for fall increased by 4% and the average gpa for spring increased by 3%.

Continuing Education Enrollment FY 97-01



	FY 97	FY 98	FY 99	FY 00	FY 01
Programs/Courses	836	603	604	571	700
Participants	3,861	4,645	4,453	6,696	8,315
Con Ed Units (CEUs)	4,809	6,423	5,637	8,424	9,152

 **Although the number of programs/courses declined by 16%, the number of participants increased by 90% during the past five years.**

Source: Office of Continuing Education