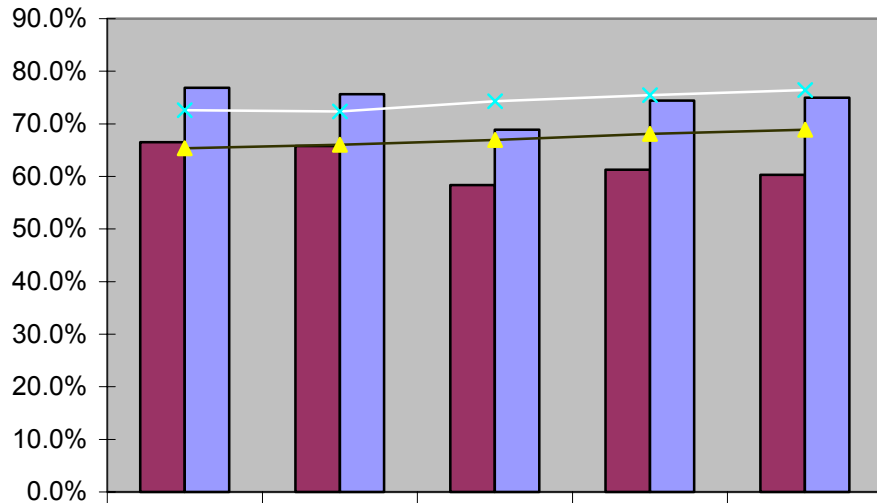


**Fall-to-Fall Retention Rates
First-time Full-time SPSU Freshmen vs. USG
Fall 97-01**



	Fall 97	Fall 98	Fall 99	Fall 00	Fall 01
SPSU Freshmen Retained at SPSU	66.5%	65.8%	58.3%	61.3%	60.3%
SPSU Freshmen Retained in System	76.8%	75.7%	68.9%	74.5%	75.0%
Avg State U Freshmen Retained at Institution	65.4%	66.0%	66.9%	68.1%	68.9%
Avg State U Retained in System	72.6%	72.4%	74.3%	75.4%	76.4%



Beginning in Fall 99, the State Universities in the University System of Georgia have a freshman retention rate 7-9% higher than SPSU.

Source: USG Retention Report


**Fall-to-Fall Retention and Graduation Rates
First-time, Full-time Freshmen by Major
Fall 98-01**

	1998				
	Number Enrolled	% Retained after 1 year	% Retained after 2 years	% Retained after 3 years	% Graduated within 4 years
Apparel/Textile Engineering Technology	9	44.4%	33.3%	22.2%	
Civil Engineering Technology	29	48.3%	44.8%	31.0%	
Computer Engineering Technology	40	62.5%	45.0%	35.0%	2.5%
Computer Science	78	56.4%	41.0%	24.4%	3.9%
Construction	12	66.7%	41.7%	25.0%	
Electrical Engineering Technology	35	65.7%	42.9%	20.0%	
General Studies	50	40.0%	18.0%	4.0%	
Industrial Distribution	1	0.0%	0.0%	0.0%	
Industrial Engineering Technology	6	66.7%	33.3%	16.7%	
Management	8	62.5%	37.5%	37.5%	12.5%
Mathematics	1	0.0%	0.0%	0.0%	
Mechanical Engineering Technology	36	38.9%	13.9%	11.1%	
Physics	4	50.0%	25.0%	25.0%	25.0%
Pre-Architecture	56	37.5%	19.6%	7.1%	
Technical and Professional Communication	1	0.0%	0.0%	0.0%	
Telecommunications Engineering Technology	1	100.0%	0.0%	0.0%	

	1999		
	Number Enrolled	% Retained after 1 year	% Retained after 2 years
Apparel/Textile Engineering Technology	10	70.0%	70.0%
Civil Engineering Technology	13	53.9%	46.2%
Computer Engineering Technology	41	53.7%	39.0%
Computer Science	79	49.4%	29.1%
Construction	11	45.5%	54.6%
Electrical Engineering Technology	40	62.5%	35.0%
General Studies	36	44.4%	2.8%
Industrial Engineering Technology	13	76.9%	76.9%
Management	5	60.0%	40.0%
Mathematics	5	60.0%	40.0%
Mechanical Engineering Technology	38	55.3%	31.6%
Physics	2	0.0%	0.0%
Pre-Architecture	34	58.8%	41.2%
Surveying and Mapping	2	0.0%	50.0%
Technical and Professional Communication	5	40.0%	0.0%
Telecommunications Engineering Technology	6	66.7%	50.0%

	2000	
	Number Enrolled	% Retained after 1 year
Apparel/Textile Engineering Technology	4	50.0%
Civil Engineering Technology	18	50.0%
Computer Engineering Technology	38	68.4%
Computer Science	89	46.1%
Construction	8	75.0%

	2000	
	Number Enrolled	% Retained after 1 year
Electrical Engineering Technology	26	38.5%
General Studies	42	11.9%
Industrial Engineering Technology	6	50.0%
Management	5	60.0%
Mathematics	1	100.0%
Mechanical Engineering Technology	47	42.6%
Physics	4	50.0%
Pre-Architecture	52	51.9%
Surveying and Mapping	1	0.0%
Technical and Professional Communication	1	100.0%
Telecommunications Engineering Technology	2	50.0%

 The programs which have experienced an increase in their freshman first year retention rates over the past three years are: Apparel/Textile Engineering Technology, Civil Engineering Technology, Computer Engineering Technology, Construction, Mathematics, Mechanical Engineering Technology, Pre-Architecture, and Technical and Professional Communication.

Source: SPSU Banner Report WSGR1620

**Fall-to-Fall Retention and Graduation Rates
New Transfers by Major
Fall 98-01**

	1998				
	Number Enrolled	% Retained after 1 year	% Retained after 2 years	% Retained after 3 years	% Graduated within 4 years
Apparel/Textile Engineering Technology	11	54.6%	54.5%	9.1%	9.1%
Civil Engineering Technology	44	59.1%	52.3%	11.4%	34.1%
Computer Engineering Technology	37	40.5%	35.1%	0.0%	10.8%
Computer Science	114	50.9%	36.0%	12.3%	22.8%
Construction	28	57.1%	53.6%	3.6%	39.3%
Electrical Engineering Technology	62	53.2%	37.1%	4.8%	14.5%
General Studies	18	22.2%	16.7%	5.6%	5.6%
Industrial Engineering Technology	25	64.0%	56.0%	20.0%	40.0%
Management	26	53.9%	42.3%	7.7%	19.2%
Mathematics	8	50.0%	25.0%	12.5%	12.5%
Mechanical Engineering Technology	46	52.2%	32.6%	4.4%	8.7%
Physics	4	50.0%	25.0%	0.0%	25.0%
Pre-Architecture	30	50.0%	23.0%	0.0%	0.0%
Surveying and Mapping	2	50.0%	50.0%	0.0%	0.0%
Technical and Professional Communication	5	40.0%	60.0%	20.0%	20.0%
Telecommunications Engineering Technology	1	100.0%	100.0%	0.0%	0.0%

	1999		
	Number Enrolled	% Retained after 1 year	% Retained after 2 years
Apparel/Textile Engineering Technology	8	37.5%	62.5%
Civil Engineering Technology	28	42.9%	28.6%
Computer Engineering Technology	36	44.5%	33.3%
Computer Science	89	49.4%	33.7%
Construction	30	56.7%	56.7%
Electrical Engineering Technology	59	37.3%	25.4%
General Studies	23	30.4%	13.0%
Industrial Distribution	5	40.0%	60.0%
Industrial Engineering Technology	25	76.0%	48.0%
Management	23	56.5%	47.8%
Mathematics	4	75.0%	25.0%
Mechanical Engineering Technology	68	50.0%	38.2%
Physics	2	0.0%	0.0%
Pre-Architecture	39	30.8%	23.1%
Surveying and Mapping	8	25.0%	37.5%
Technical and Professional Communication	6	33.0%	16.7%
Telecommunications Engineering Technology	5	40.0%	40.0%

	2000	
	Number Enrolled	% Retained after 1 year
Apparel/Textile Engineering Technology	9	33.3%
Civil Engineering Technology	33	63.6%
Computer Engineering Technology	38	60.5%

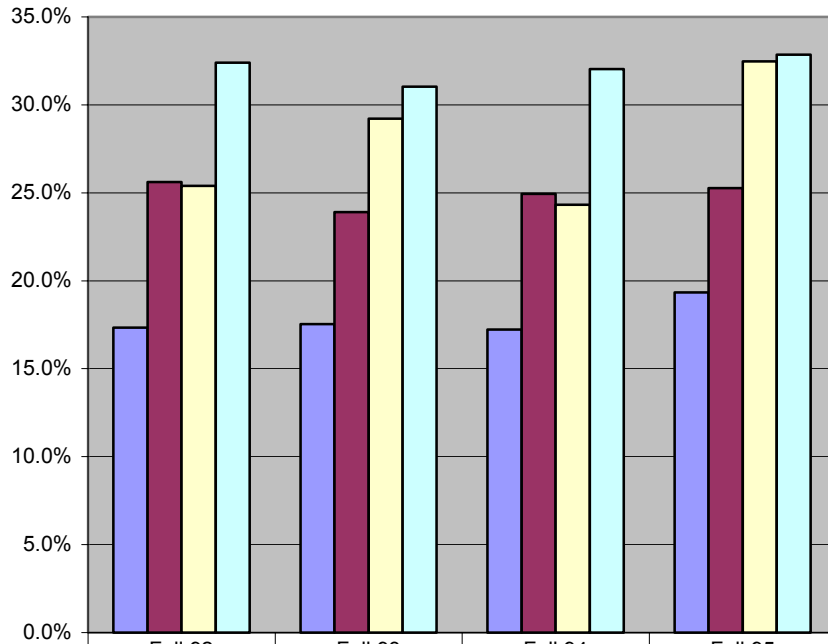
	2000	
	Number Enrolled	% Retained after 1 year
Computer Science	85	57.7%
Construction	25	68.0%
Electrical Engineering Technology	58	41.4%
General Studies	34	8.8%
Industrial Distribution	2	50.0%
Industrial Engineering Technology	24	45.8%
Management	16	31.3%
Mathematics	3	66.7%
Mechanical Engineering Technology	42	42.9%
Physics	5	40.0%
Pre-Architecture	42	52.4%
Surveying and Mapping	8	62.5%
Technical and Professional Communication	3	33.3%
Telecommunications Engineering Technology	5	0.0%



The programs which have experienced an increase in their transfer first year retention rates over the past three years are: **Civil Engineering Technology, Computer Engineering Technology, Computer Science, Construction, Mathematics, Pre-Architecture, and Surveying and Mapping.**

Source: SPSU Banner Report WSGR1620

6-Year Graduation Rates SPSU vs. USG Freshmen Entering Fall 92-95



	Fall 92	Fall 93	Fall 94	Fall 95
■ Freshmen graduating from SPSU in 6-yrs	17.3%	17.5%	17.2%	19.3%
■ Freshmen graduating from USG State U in 6-Yrs	25.6%	23.9%	24.9%	25.3%
□ SPSU Freshmen graduating from USG in 6-yrs	25.4%	29.2%	24.3%	32.5%
□ State U Freshmen graduating from USG in 6-Yrs	32.4%	31.0%	32.0%	32.9%

Freshmen who entered SPSU in the Fall of 95 had a 2 percentage point increase in their 6-year graduation rate over the cohort who entered SPSU the previous year.

Freshmen who entered SPSU in the Fall of 95 had an 8 percentage point increase in their 6-year graduation rate over the USG cohort for the previous year.

Source: USG Retention Report

**4, 5, and 6-Year Graduation Rates
Bachelor's Degree-Seeking Students by Ethnicity
Entering Fall 1995**

	Enrolled Fall 1995	Receiving Degree By Summer 1999	Four-Year Graduation Rate
Full-Time, First Time Bachelor's Degree			
Seeking Undergraduate Students			
Nonresident Alien	5	0	0.0%
Black	45	1	2.2%
American Indian	0	0	
Asian	7	0	0.0%
Hispanic	5	0	0.0%
White	212	4	1.9%
Total	274	5	1.8%

	Enrolled Fall 1995	Receiving Degree By Summer 2000	Five-Year Graduation Rate
Full-Time, First Time Bachelor's Degree			
Seeking Undergraduate Students			
Nonresident Alien	5	0	0.0%
Black	45	8	20.0%
American Indian	0	0	
Asian	7	0	0.0%
Hispanic	5	1	20.0%
White	212	20	11.3%
Total	274	29	12.4%

	Enrolled Fall 1995	Receiving Degree By Summer 2001	Six-Year Graduation Rate	Transfer Out by Summer 2001	Six-Year Transfer Out Rate
Full-Time, First Time Bachelor's Degree					
Seeking Undergraduate Students					
Nonresident Alien	5	0	0.0%	1	20.0%
Black	45	3	26.7%	9	20.0%
American Indian	0	0		0	
Asian	7	2	28.6%	3	42.9%
Hispanic	5	0	20.0%	3	60.0%
White	212	14	17.9%	90	42.5%
Total	274	19	19.3%	106	38.7%



The graduation rate for blacks is higher than for whites.