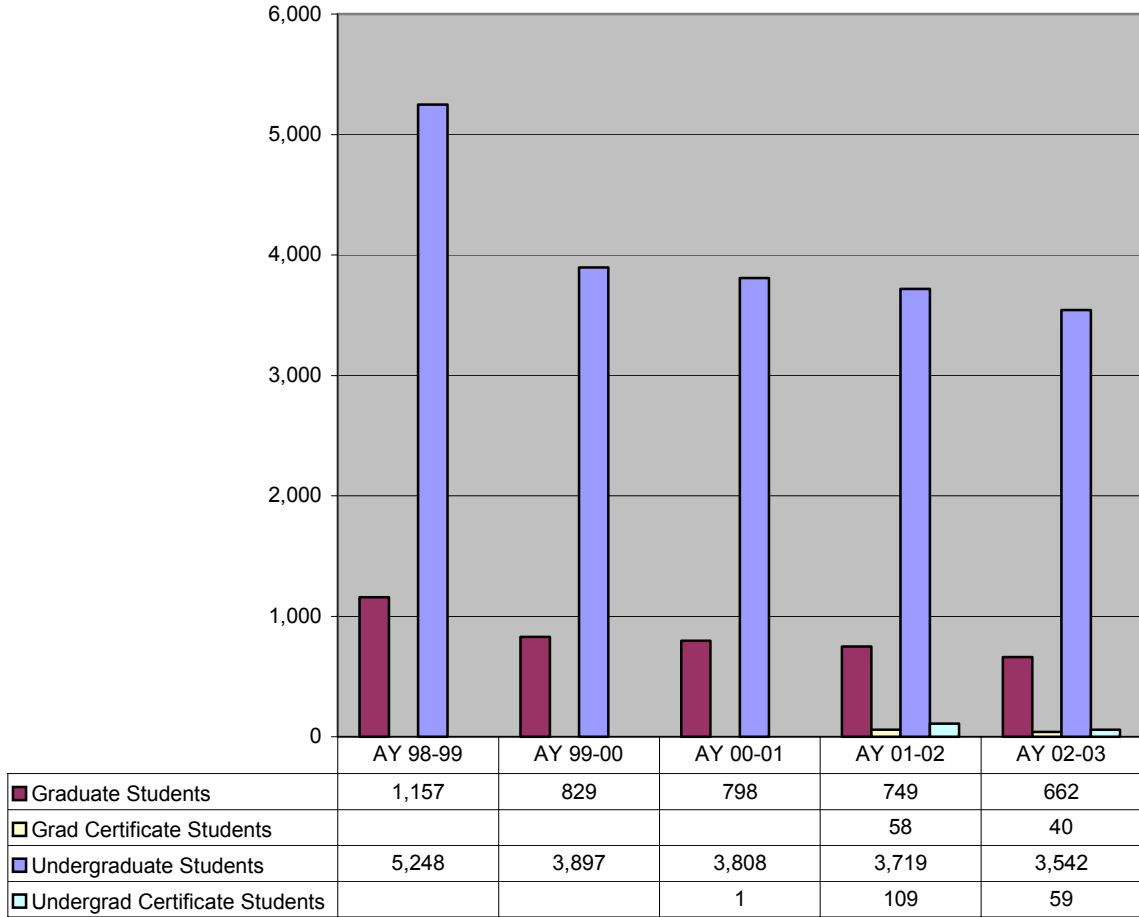


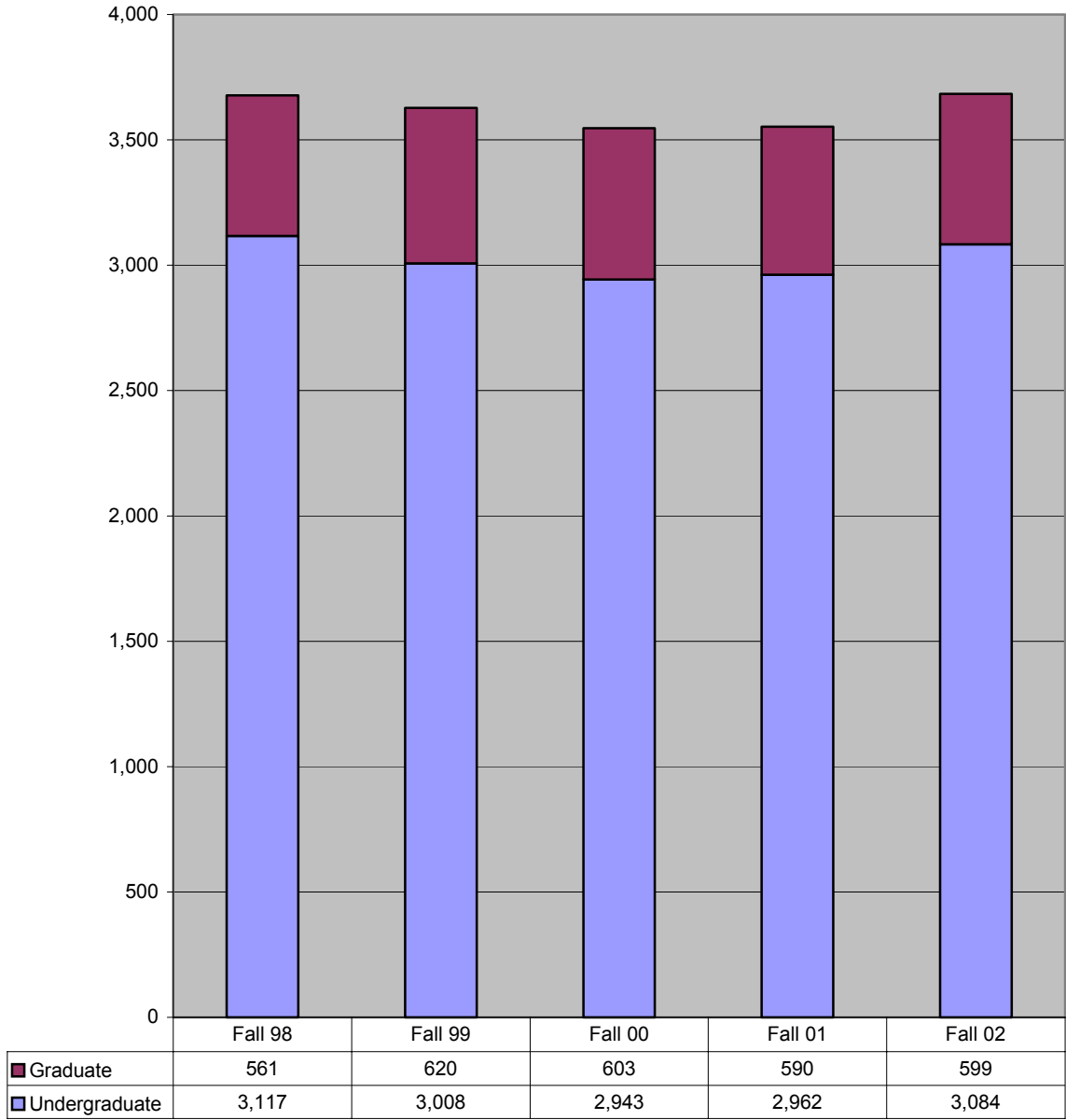
**Unduplicated Headcount by Student Level  
AY 98-02**




 **The total number of students (unduplicated) attending SPSU during one academic year has decreased by 9% since the 98-99 academic year.**

Source: SPSU Banner Report WSHR1000

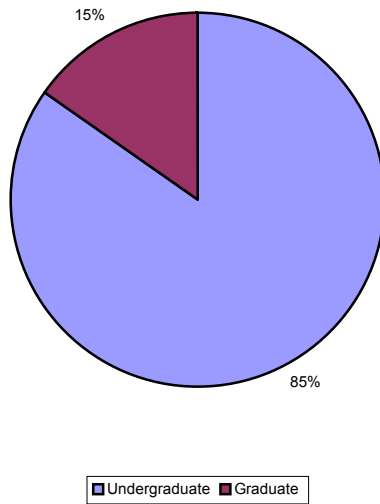
### Headcount Enrollment by Student Level Fall 98-02



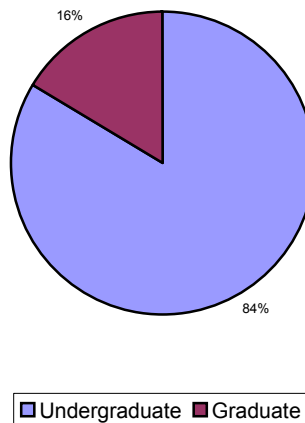
 The number of undergraduates has declined by 1% and the number of graduates has grown by 7% from Fall 98 to Fall 02.

Source: IPEDS Fall Enrollment Survey

### Headcount Enrollment by Student Level Fall 98

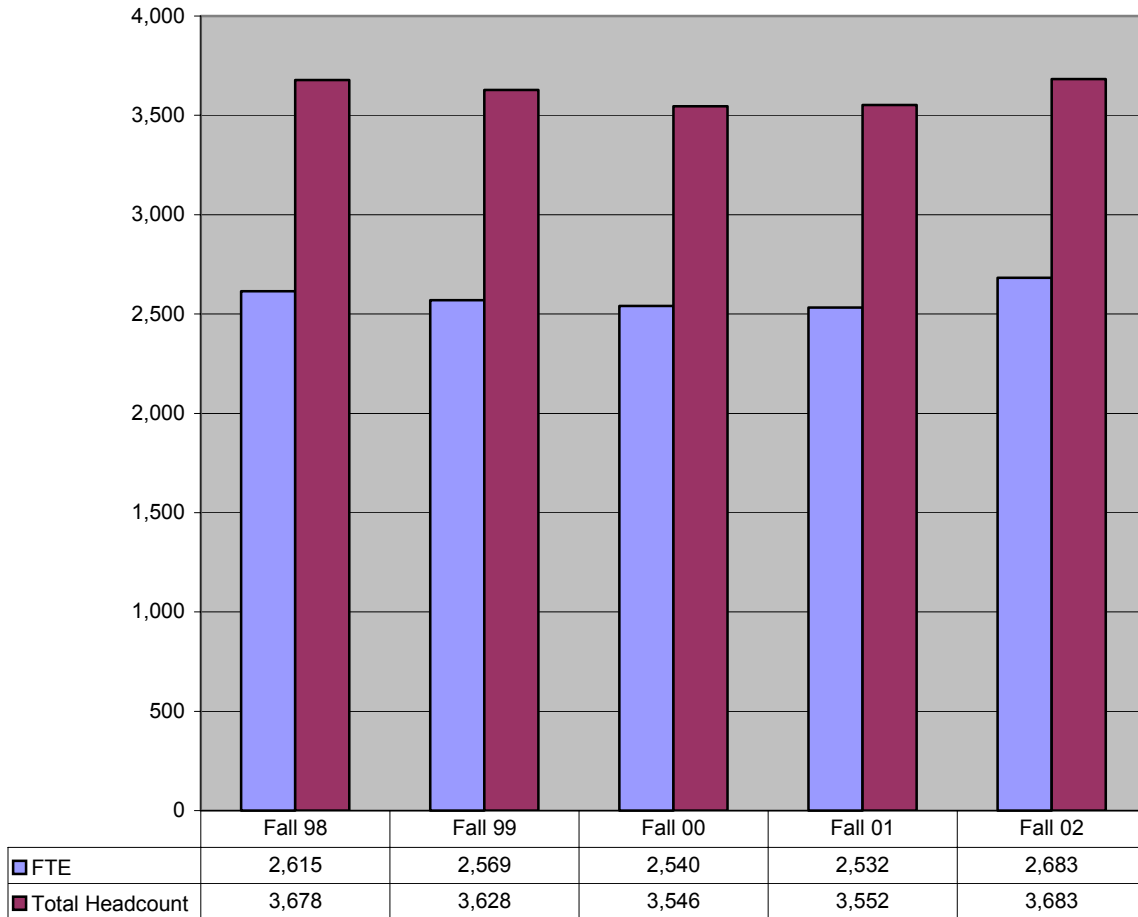


### Headcount Enrollment by Student Level Fall 02



 The portion of graduate students grew by 1 percentage point during the past five years.

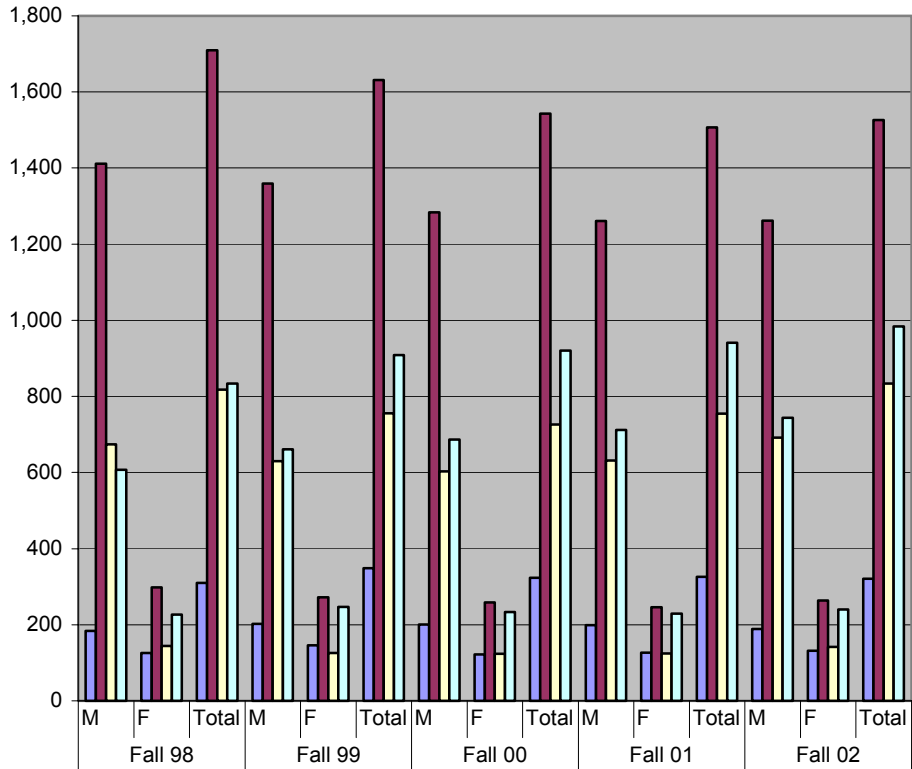
### Headcount and FTE Enrollment Fall 98-02



 **FTE increased at a 3% faster rate than headcount from Fall 98 to Fall 02.**


Source: IPEDS Fall Enrollment Survey and USG SIRS Fall Enrollment Report

### Enrollment by School and Gender Fall 98-02



■ School of Arts & Sci	184	126	310	202	146	348	201	122	323	199	127	326	189	132	321
■ School of Tech & Mgmt	1,411	298	1,709	1,359	272	1,631	1,284	259	1,543	1,261	246	1,507	1,262	264	1,526
■ School of Arch, CET & Const	674	144	818	630	126	756	603	123	726	631	124	755	692	142	834
■ School of Comp & SE	607	227	834	661	247	908	687	233	920	712	229	941	744	240	984

 **The School of Computing and Software Engineering has grown by 18% over the past five years.**

 **The School of Arts & Sciences is the only school where the number of females has increased more than the number of males over the past five years.**

Source: USG SIRS Fall Enrollment Report

### Enrollment by Major and Gender Fall 98-02


	Fall 98			Fall 99			Fall 00			Fall 01			Fall 02		
	M	F	Total	M	F	Total	M	F	Total	M	F	Total	M	F	Total
<b>Certificate</b>	0	0	0	16	9	25	58	28	86	70	22	92	69	17	86
Apparel Product Development										0	1	1			
Computer Programming				8	2	10	21	15	36	18	8	26	5	2	7
Computer Science (Post Bacc.)							16	5	21	21	8	29	16	4	20
Information Technology (Post Bacc.)													1	0	1
Land Development													1	1	2
Land Surveying										4	0	4	11	0	11
Pre-Software Systems Development				1	0	1	1	0	1				0	1	1
Project Management										3	2	5	4	2	6
Quality Assurance (Post Bacc.)				0	1	1				2	0	2	1	0	1
Software Engineering (Post Bacc.)				7	6	13	5	3	8	4	1	5	8	1	9
Software Systems Development							15	5	20	18	2	20	19	6	25
Specialty Construction													3	0	3


**Enrollment by Major and Gender**  
(continued)


	Fall 98			Fall 99			Fall 00			Fall 01			Fall 02		
	M	F	Total	M	F	Total	M	F	Total	M	F	Total	M	F	Total
<b>Undergraduate</b>	2,550	558	3,108	2,514	511	3,025	2,421	479	2,900	2,435	476	2,911	2,511	521	3,032
Apparel Engineering Technology	0	2	2	0	2	2	0	1	1	0	1	1	0	1	1
Apparel/Textile Engineering Technology	50	30	80	41	31	72	40	27	67	37	24	61	29	27	56
Applied Science	2	1	3	2	0	2				1	0	1			
Architectural Engineering Technology	0	1	1												
Architecture	47	9	56	32	7	39	47	16	63	33	12	45	21	10	31
Biology													3	4	7
Civil Engineering Technology	275	54	329	244	47	291	200	40	240	222	35	257	216	30	246
Computer Engineering Technology	226	40	266	230	32	262	233	31	264	262	28	290	232	28	260
Computer Science	458	119	577	481	108	589	478	91	569	471	77	548	430	73	503
Construction	157	13	170	173	13	186	176	10	186	170	14	184	182	18	200
Electrical Engineering Technology	376	36	412	343	32	375	311	31	342	288	28	316	311	28	339
Environmental Development	15	2	17	4	0	4	3	0	3						
General Studies/Undeclared	114	31	145	115	34	149	127	24	151	118	33	151	114	40	154
Industrial Distribution	13	3	16	15	2	17	10	3	13	8	4	12	5	2	7
Industrial Engineering Technology	128	47	175	123	41	164	129	47	176	96	36	132	96	35	131
Information Technology										18	4	22	69	18	87
International Studies/Global Technology													1	1	2
International Technical Communication										2	2	4	2	1	3
Management	94	53	147	105	58	163	100	55	155	114	48	162	111	57	168
Manufacturing	1	0	1	1	0	1									
Mathematics	16	9	25	20	6	26	23	6	29	17	7	24	17	12	29
Mechanical Engineering Technology	387	26	413	350	16	366	315	13	328	280	15	295	301	13	314
Physics	15	5	20	18	0	18	18	3	21	15	6	21	15	6	21
Pre-Architecture	128	51	179	123	49	172	120	52	172	147	55	202	207	74	281
Software Engineering										9	2	11	24	6	30
Surveying and Mapping	13	1	14	23	3	26	29	1	30	31	3	34	31	3	34
Technical and Professional Communication	19	20	39	28	26	54	17	24	41	25	30	55	26	25	51
Telecommunications Engineering Technology	11	4	15	41	3	44	44	3	47	70	12	82	67	9	76
Textile Engineering Technology	5	1	6	2	1	3	1	1	2	1	0	1	1	0	1

### Enrollment by Major and Gender (continued)

	Fall 98			Fall 99			Fall 00			Fall 01			Fall 02		
	M	F	Total	M	F	Total	M	F	Total	M	F	Total	M	F	Total
<b>Graduate</b>	326	237	563	322	271	593	296	230	526	298	228	526	307	240	547
Computer Science	133	98	231	140	113	253	118	91	209	92	86	178	99	72	171
Construction	39	13	52	31	7	38	28	4	32	24	5	29	20	6	26
Engineering Technology-Elect	19	0	19	16	1	17	14	1	15	21	3	24	32	8	40
Engineering Technology-Qual Syst	2	2	4												
Information Technology							9	10	19	35	31	66	43	49	92
MBA													9	8	17
Management	45	25	70	38	31	69	28	25	53	18	21	39	15	21	36
Quality Assurance	52	28	80	52	21	73	59	21	80	60	23	83	48	25	73
Software Engineering	16	10	26	24	18	42	24	13	37	26	10	36	30	8	38
Technical and Professional Communication	20	61	81	21	80	101	16	65	81	22	49	71	11	43	54
School of Arts & Sci	184	126	310	202	146	348	201	122	323	199	127	326	189	132	321
School of Tech & Mgmt	1,411	298	1,709	1,359	272	1,631	1,284	259	1,543	1,261	246	1,507	1,262	264	1,526
School of Arch, CET & Const	674	144	818	630	126	756	603	123	726	631	124	755	692	142	834
School of Comp & SE	607	227	834	661	247	908	687	233	920	712	229	941	744	240	984
<b>Total</b>	<b>2,876</b>	<b>795</b>	<b>3,671</b>	<b>2,852</b>	<b>791</b>	<b>3,643</b>	<b>2,775</b>	<b>737</b>	<b>3,512</b>	<b>2,803</b>	<b>726</b>	<b>3,529</b>	<b>2,887</b>	<b>778</b>	<b>3,665</b>

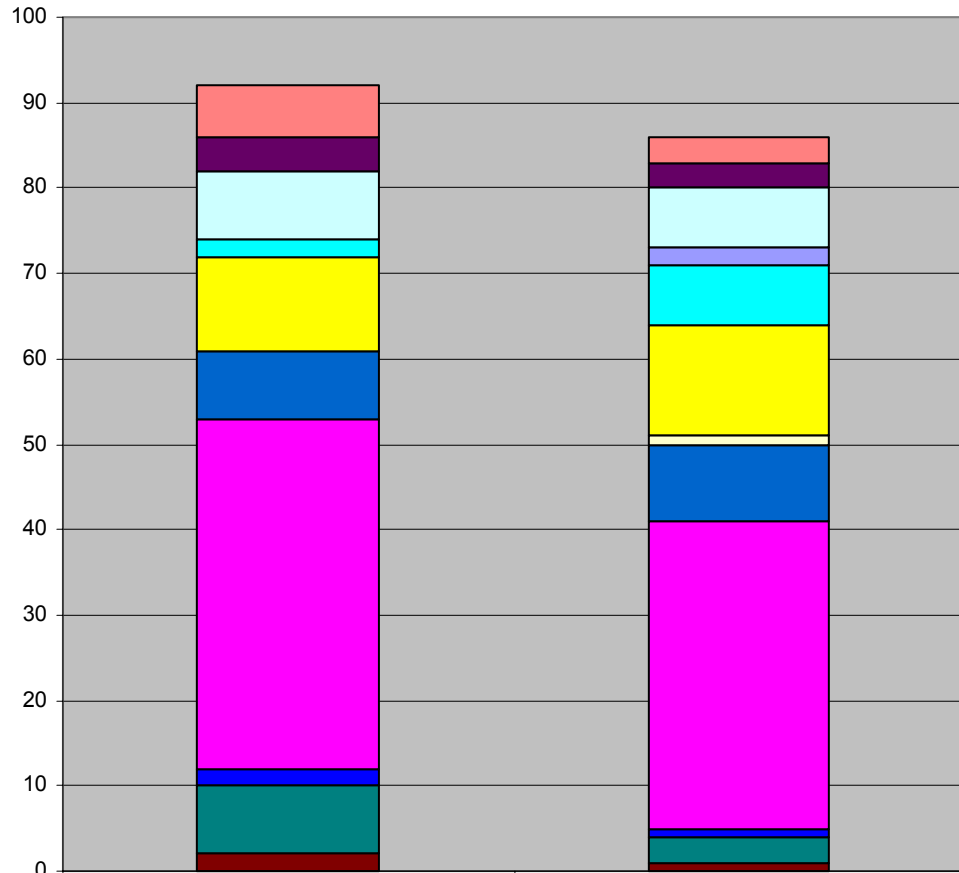
 **Of the 9 undergraduate programs that grew over the past five years, the 3 that grew the most were: Telecommunications Engineering Technology, Architecture, and Surveying and Mapping.**

 **The graduate programs that grew over the past five years were Engineering Technology and Software Engineering.**

 **Over the past five years, the number of females grew at least 25% in Architecture, Construction, General Studies, Mathematics, Surveying & Mapping, Technical Communication, and Telecommunications ET.**

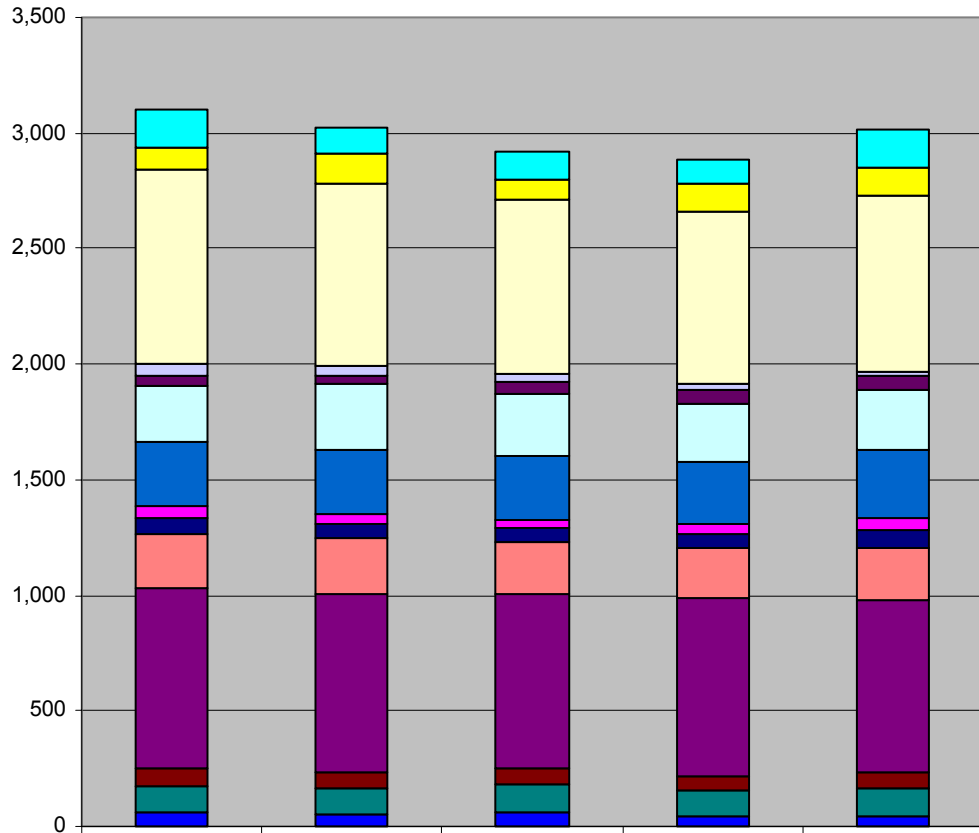
Source: SPSU Banner Report WSFR 0215

Certificate Enrollment by Place of Origin  
Fall 01-02



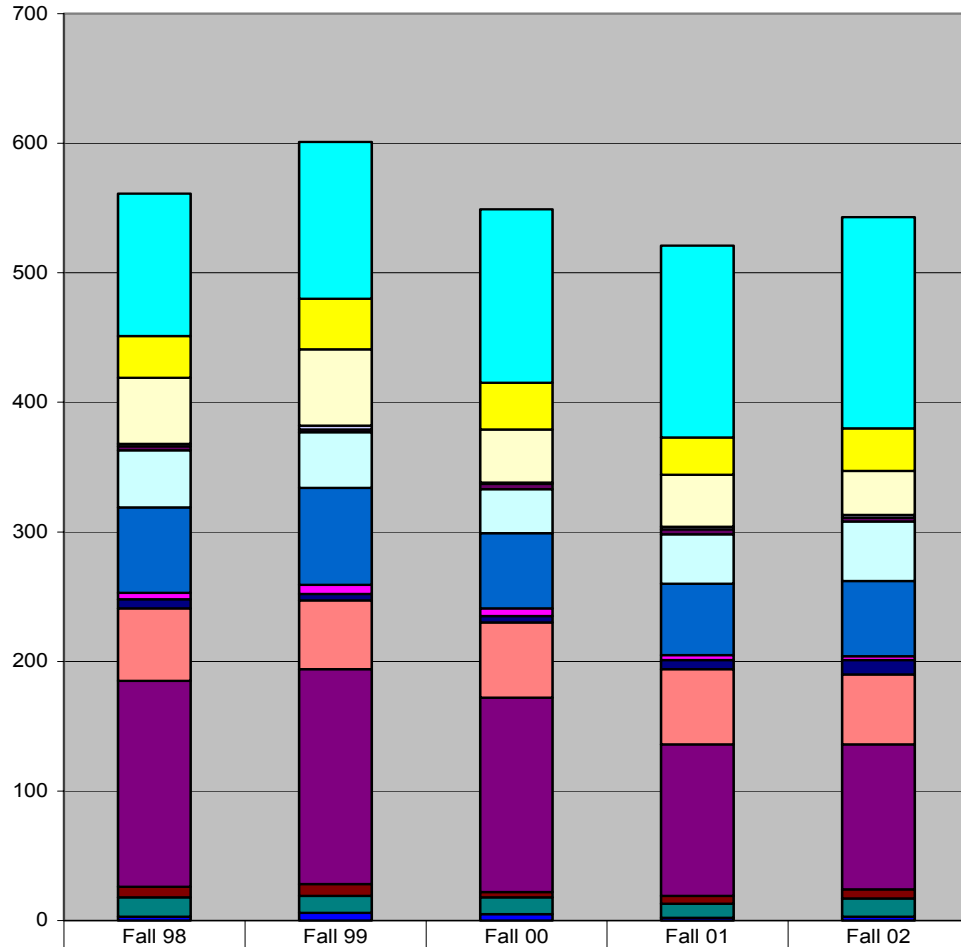
	Fall 01	Fall 02
Other Countries	6	3
Other States	4	3
Other GA Counties	8	7
Whitfield	0	0
Paulding	0	2
Gwinnett	2	7
Fulton	11	13
Fayette	0	1
Douglas	0	0
DeKalb	8	9
Cobb	41	36
Clayton	2	1
Cherokee	8	3
Bartow	2	1

Undergraduate Enrollment by Place of Origin  
Fall 98-02



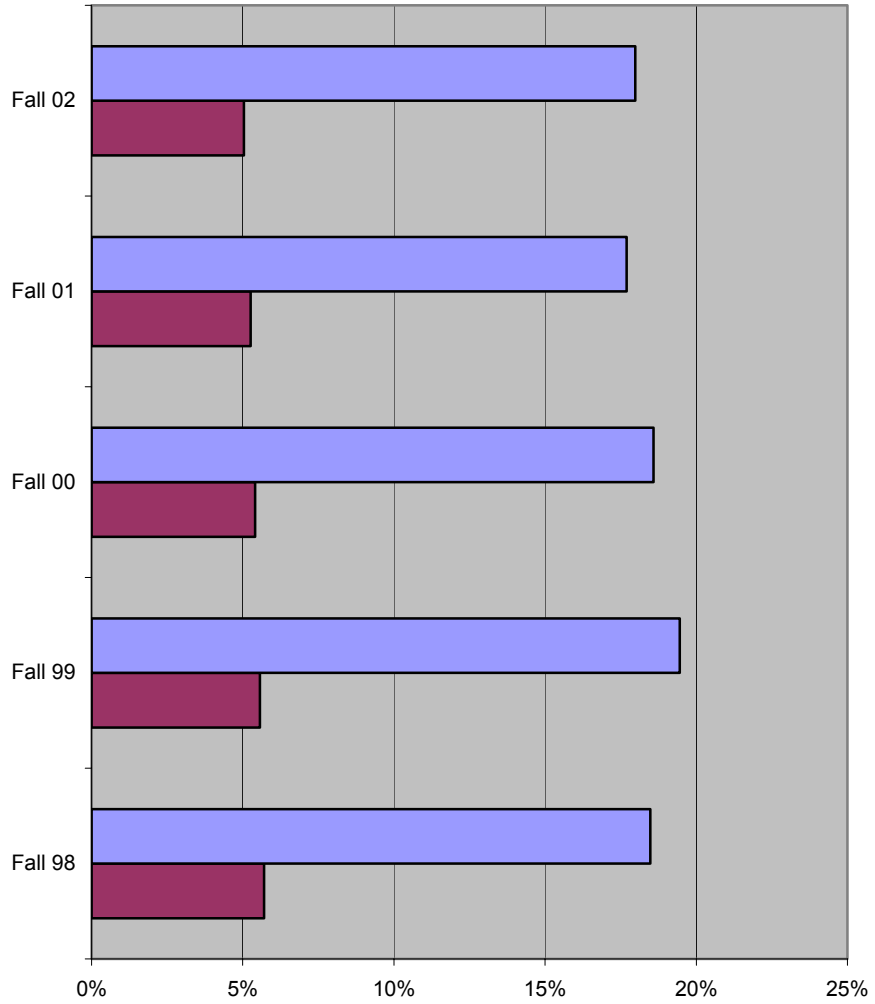
	Fall 98	Fall 99	Fall 00	Fall 01	Fall 02
Other Countries	159	115	121	109	161
Other States	103	130	89	122	121
Other GA Counties	837	783	754	740	765
Whitfield	50	43	34	30	22
Paulding	44	38	56	54	60
Gwinnett	245	286	268	251	260
Fulton	278	277	276	276	294
Fayette	46	40	34	38	53
Douglas	70	65	56	63	77
DeKalb	240	242	225	220	219
Cobb	778	772	755	770	752
Clayton	76	69	72	61	67
Cherokee	114	109	119	106	123
Bartow	60	54	63	47	40

Graduate Enrollment by Place of Origin  
Fall 98-02



	Fall 98	Fall 99	Fall 00	Fall 01	Fall 02
Other Countries	110	121	134	148	163
Other States	32	39	36	29	33
Other GA Counties	51	59	41	40	34
Whitfield	2	3	1	2	2
Paulding	3	2	4	4	3
Gwinnett	44	43	34	38	46
Fulton	66	75	58	55	58
Fayette	5	7	6	4	3
Douglas	7	5	5	7	11
DeKalb	56	53	58	58	54
Cobb	159	166	150	117	112
Clayton	8	9	4	6	7
Cherokee	15	13	13	11	14
Bartow	3	6	5	2	3

**SPSU's Contribution of International Students to USG State Universities  
Fall 98-02**



	Fall 98	Fall 99	Fall 00	Fall 01	Fall 02
% SPSU to USG State Univ Aliens	18.5%	19.5%	18.6%	17.7%	18.0%
% SPSU to USG State Univ Total Students	5.7%	5.6%	5.4%	5.3%	5.0%

Although SPSU contributed 5% of the total enrollment of the USG State Universities in Fall 02, it contributed 18% of the international students.

**Countries Contributing Largest Number of Students (5 or more)  
Fall 2002**

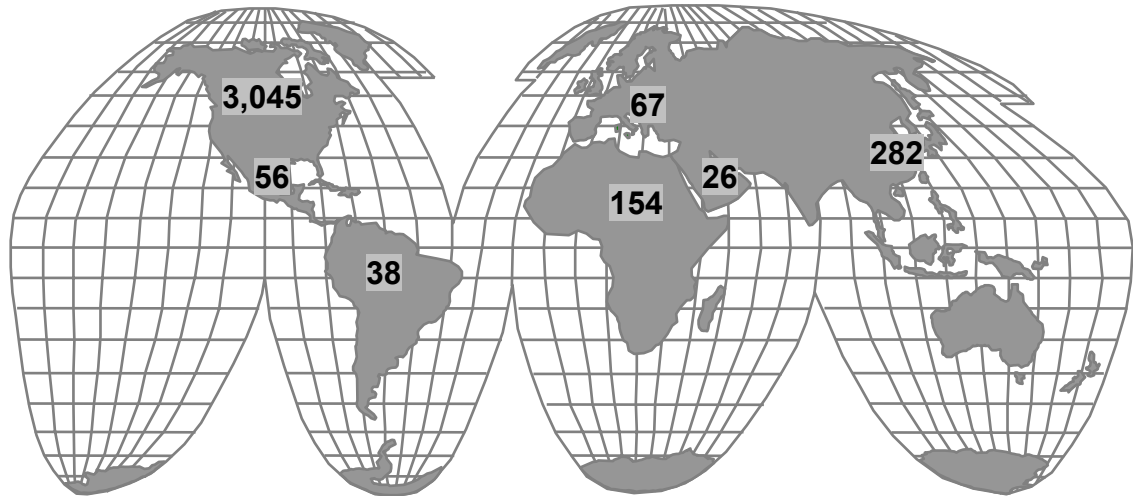
<b>Country</b>	<b>Most Undergrads</b>	<b>Country</b>	<b>Most Grads</b>
India	33	India	94
Nigeria	22	China	49
Kenya	21	Turkey	17
Jamaica	20	Nigeria	9
Vietnam	19	Thailand	9
Colombia	17	Ethiopia	7
Canada	14	Nepal	6
Pakistan	12	Pakistan	5
Ethiopia	11		
Mexico	11		
Cameroon	10		
Germany	8		
Ghana	6		
Lebanon	6		
France	5		
Gambia	5		
Liberia	5		
South Africa	5		
Venezuela	5		
Zimbabwe	5		

 From Fall 01 to Fall 02, the number of undergraduate students from Colombia doubled.

 From Fall 01 to Fall 02, the number of graduate students from China declined by 70%.

Source: SPSU Banner

### Students Contributed by World Region Fall 2002

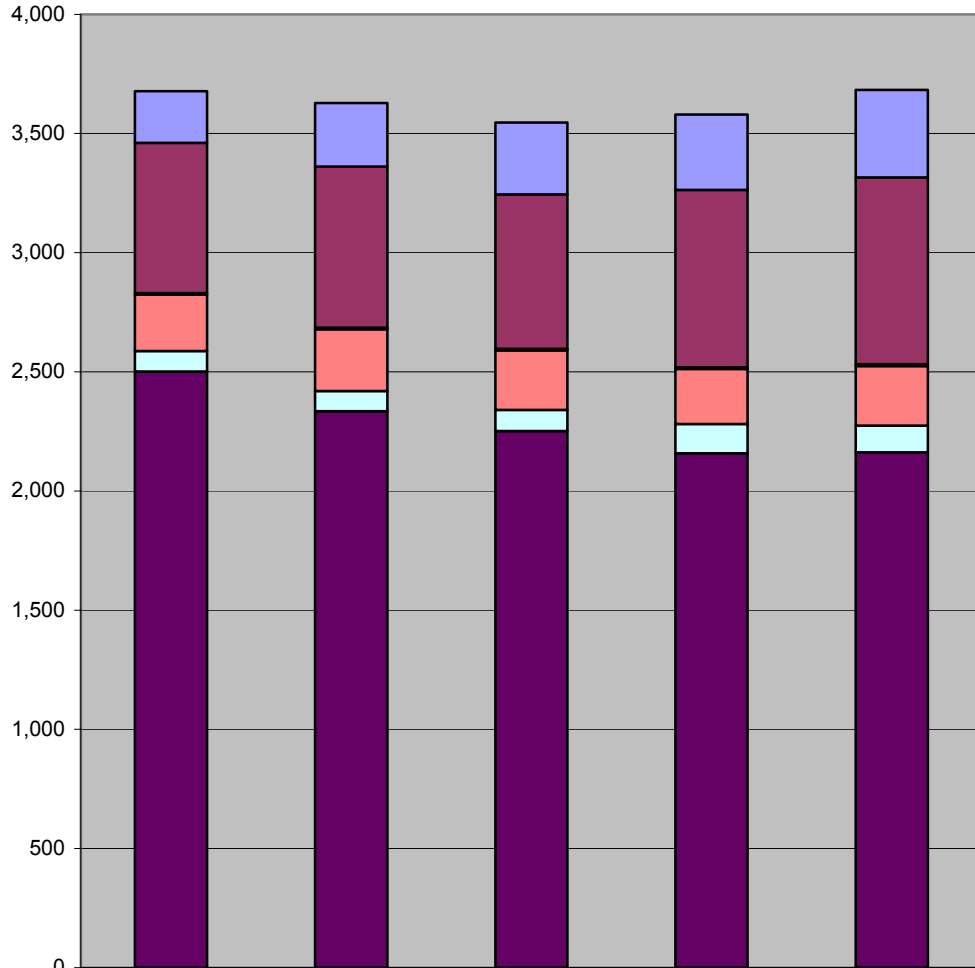


Region	Certificate	Undergrads	Grads	Total
Africa	3	116	35	154
Asia	3	99	180	282
Central America/Caribbean	1	49	6	56
Europe/Former Soviet Union	1	43	23	67
Middle East	0	18	8	26
US/Canada	74	2,676	295	3,045
South America	1	31	6	38
Total	83	3,032	553	3,668




From Fall 01 to Fall 02, the number of students contributed by every region of the world increased.

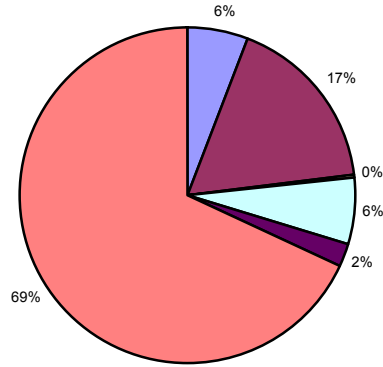
Headcount Enrollment by Race  
Fall 98-02



	Fall 98	Fall 99	Fall 00	Fall 01	Fall 02
Non-Resident Alien	217	267	302	316	367
Black	630	676	647	744	784
American Indian	7	6	7	7	8
Asian	236	259	250	231	250
Hispanic	86	85	88	123	112
White	2,502	2,335	2,252	2,158	2,162

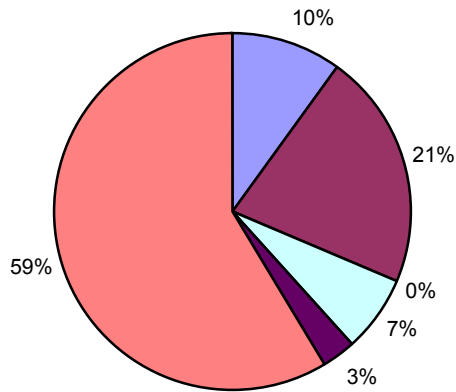
 For the first time in five years, the number of white students did not decrease from the previous year.

### Headcount Enrollment by Race Fall 98



■ Non-Resident Alien ■ Black ■ American Indian ■ Asian ■ Hispanic ■ White

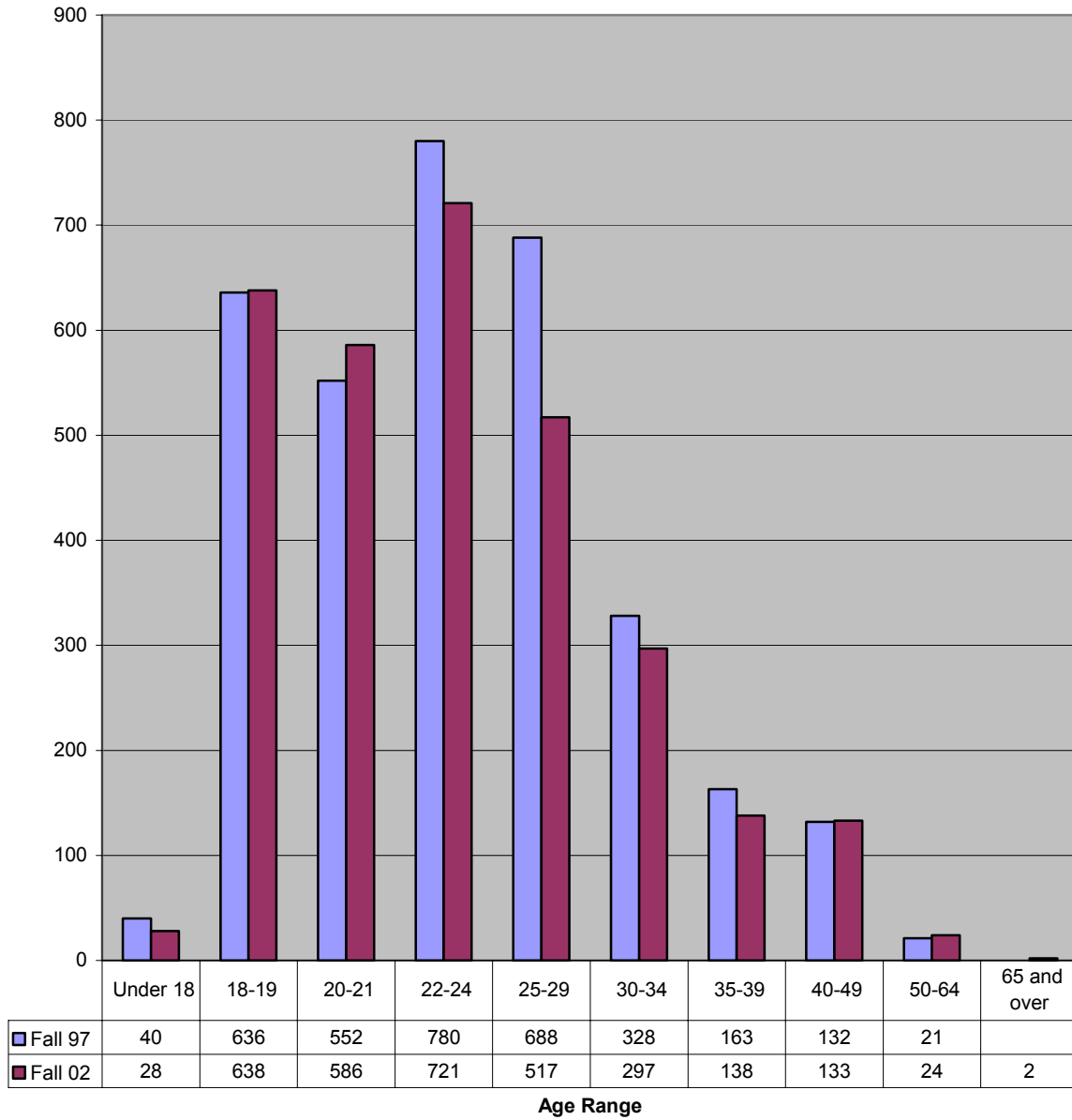
### Headcount Enrollment by Race Fall 02



■ Non-Resident Alien ■ Black ■ American Indian ■ Asian ■ Hispanic ■ White

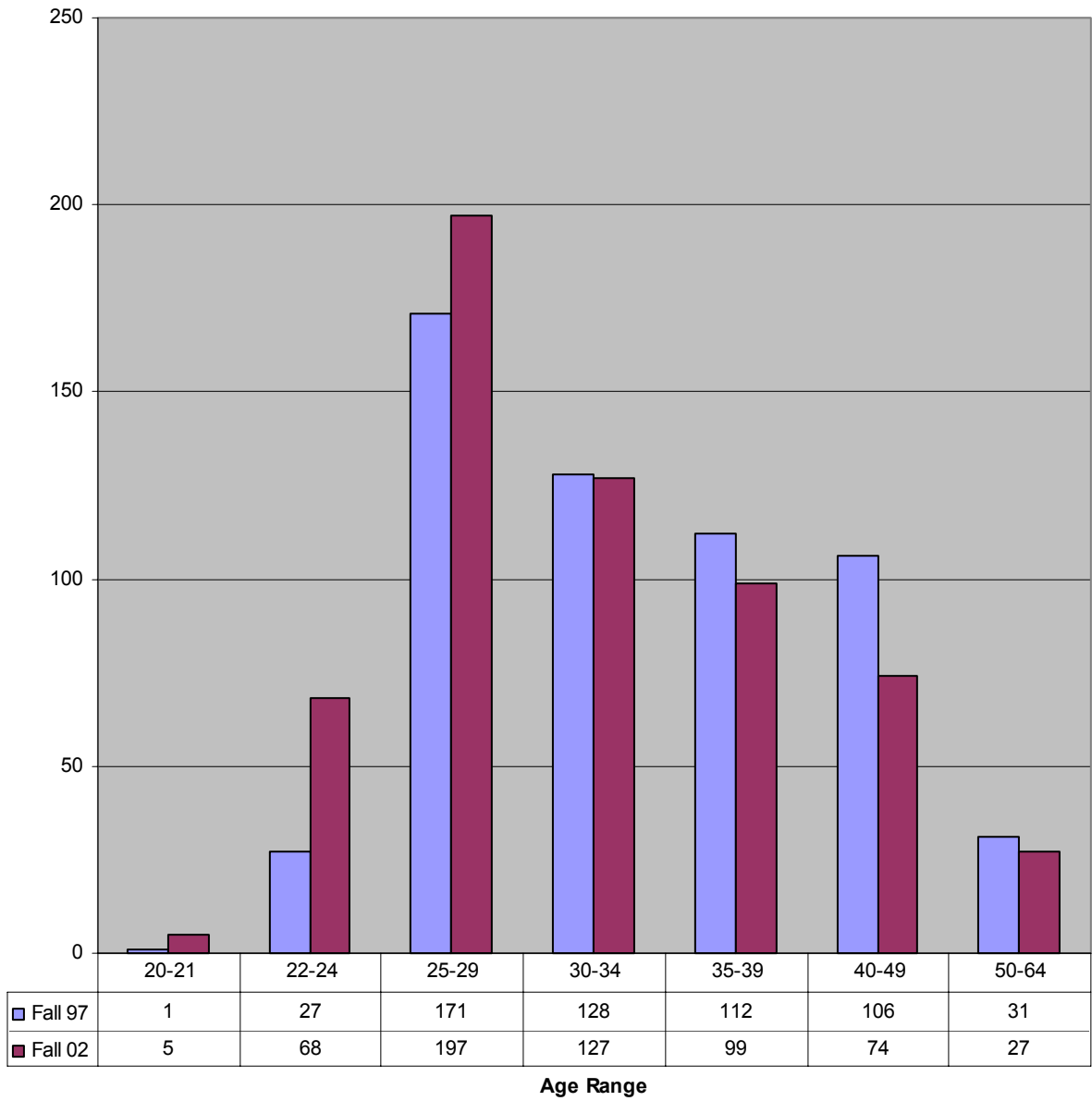
 In the past five years, the proportion of White enrollment declined by 10 percentage points (note that resident aliens are counted in this category).


### Distribution of Undergraduate Students by Age Fall 97 vs Fall 02



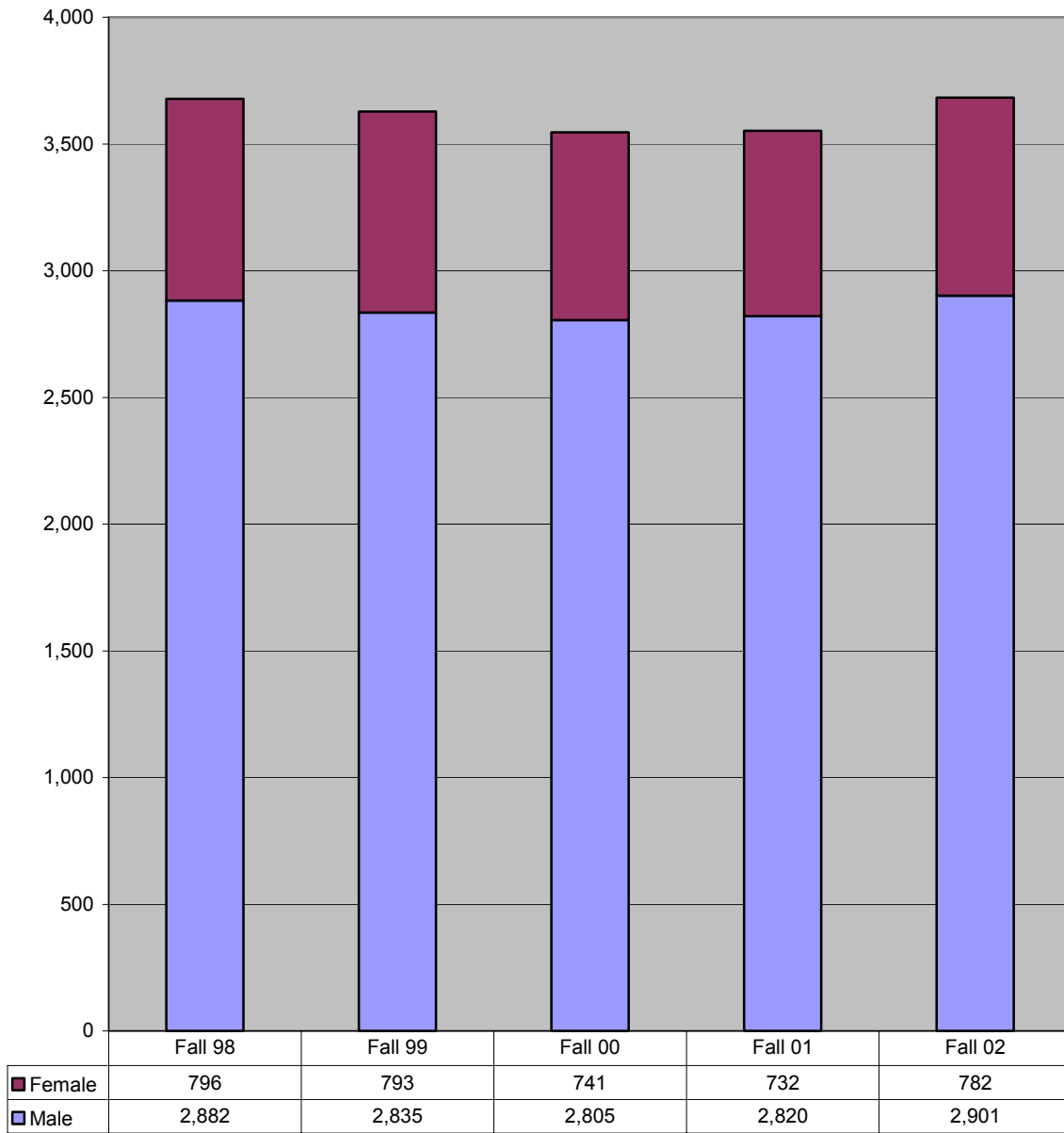
 **The number of undergraduate students 25 years and older has decreased by 17% over the past five years.**


### Distribution of Graduate Students by Age Fall 97-02



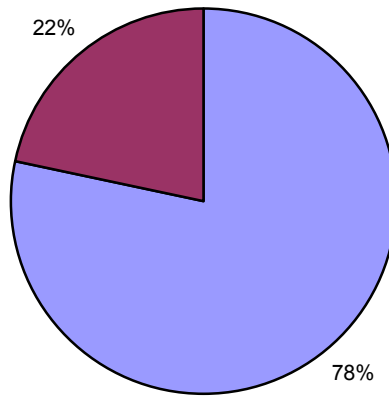
 The number of grad students 25 years and older has decreased by 4% over the past five years.

### Headcount Enrollment by Gender Fall 98-02



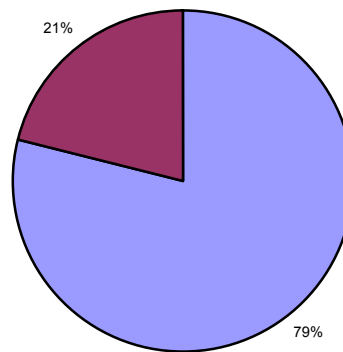
 Female enrollment increased by 7% and male enrollment increased by 3% from Fall 01.

### Enrollment by Gender Fall 98



Male Female

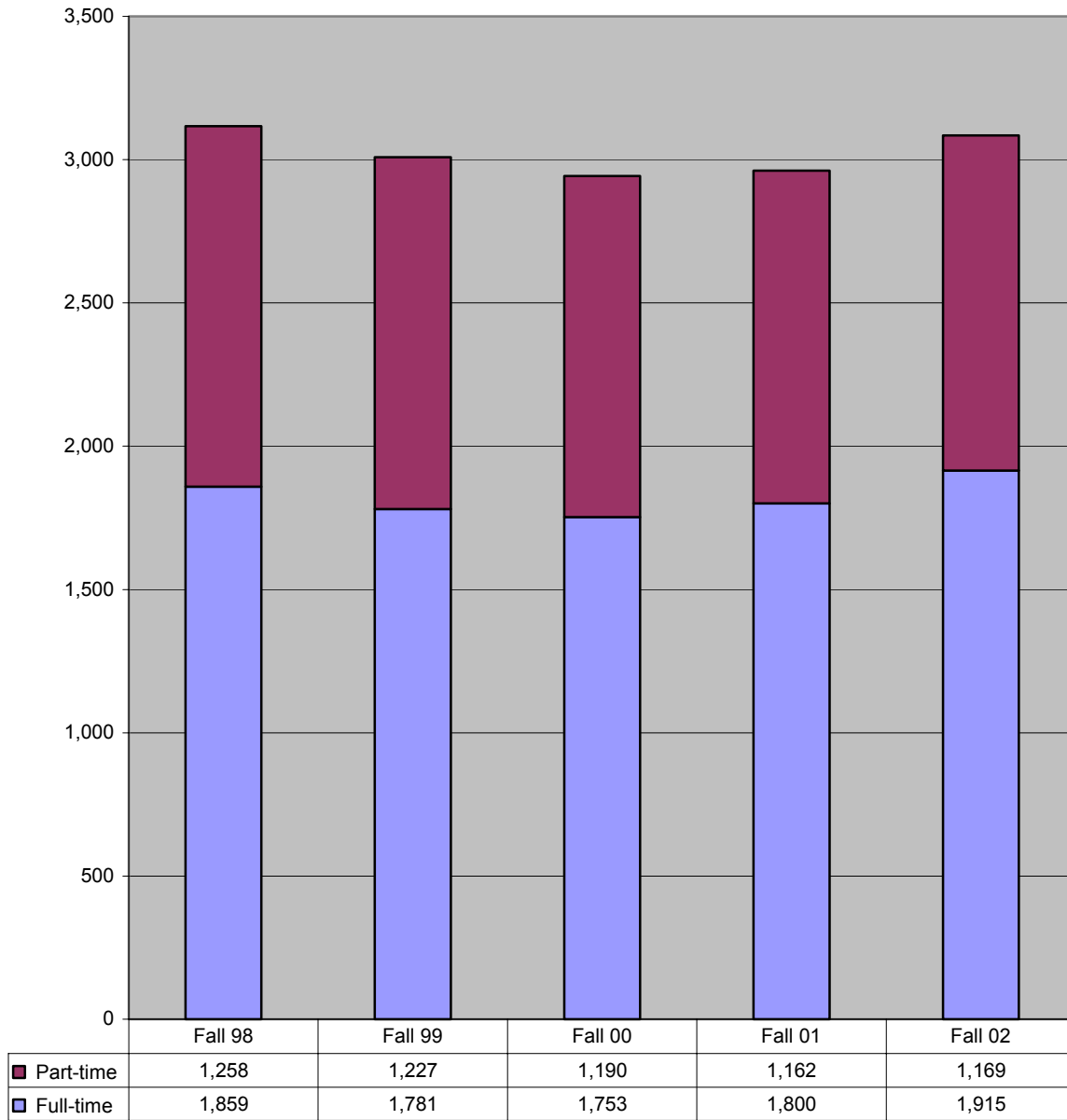
### Enrollment by Gender Fall 02




Male Female

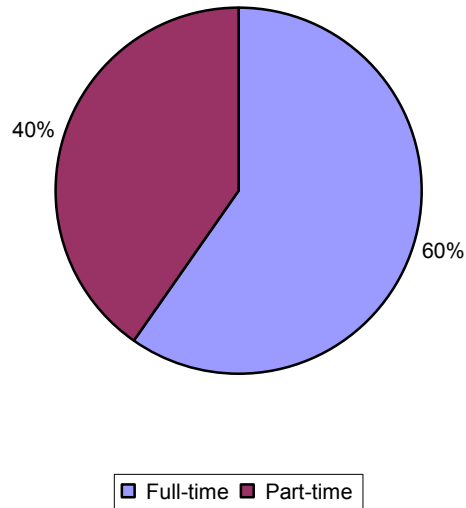
 The proportion of males to females has grown by one percentage point over the last five years.

### Undergraduate Headcount Enrollment by Status Fall 98-02

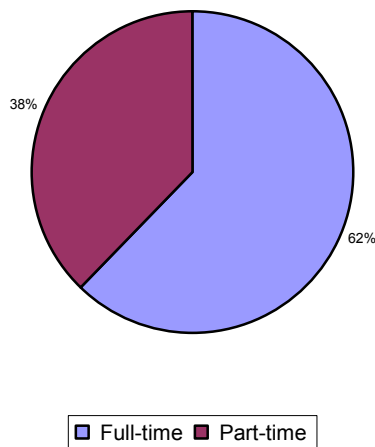



 **Over the past five years, full-time undergraduate enrollment grew by 3% while part-time undergraduate enrollment declined by 7%.**

### Undergraduate Headcount Enrollment by Status Fall 98

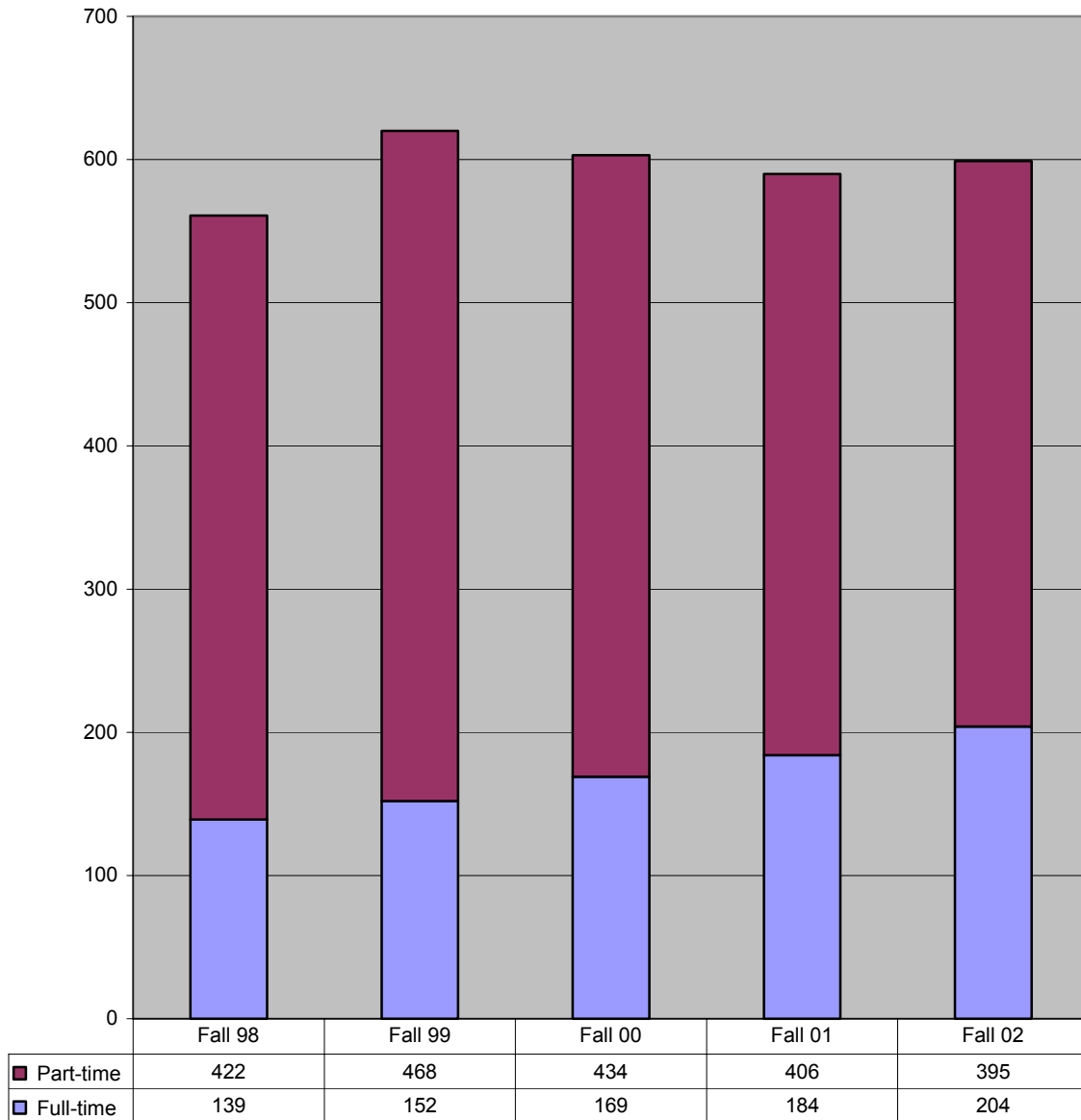



### Undergraduate Headcount Enrollment by Status Fall 02



 Over the past five years, the proportion of full-time undergraduate students grew by 2 percentage points.

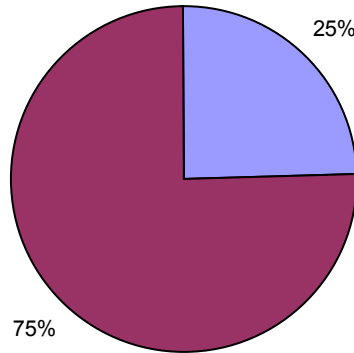
### Graduate Headcount Enrollment by Status Fall 98-02



 **Over the past five years, full-time graduate enrollment grew by 47% while part-time graduate enrollment declined by 6%.**

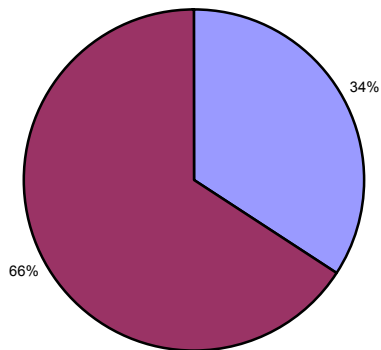
Source: IPEDS Fall Enrollment Survey

### Graduate Headcount Enrollment by Status Fall 98



■ Full-time ■ Part-time

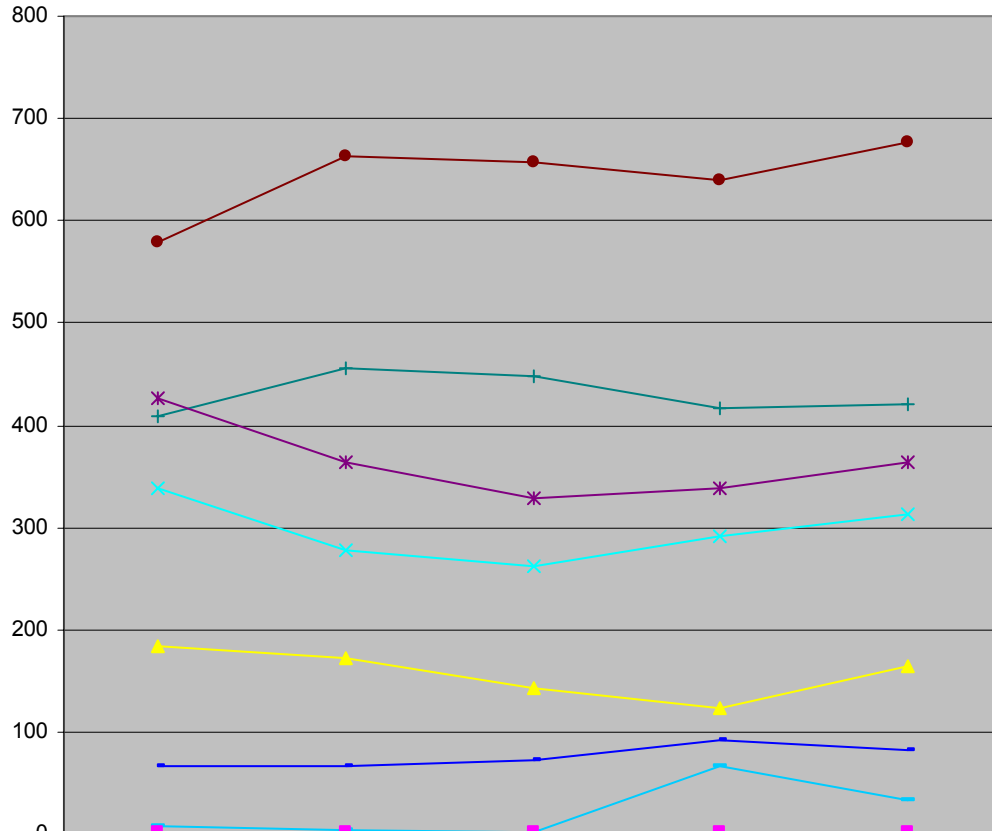
### Graduate Headcount Enrollment by Status Fall 02



■ Full-time ■ Part-time

 Over the past five years, the proportion of full-time graduate students grew by 5 percentage points.

**Total Enrollment by Student Type  
Summer 98-02**



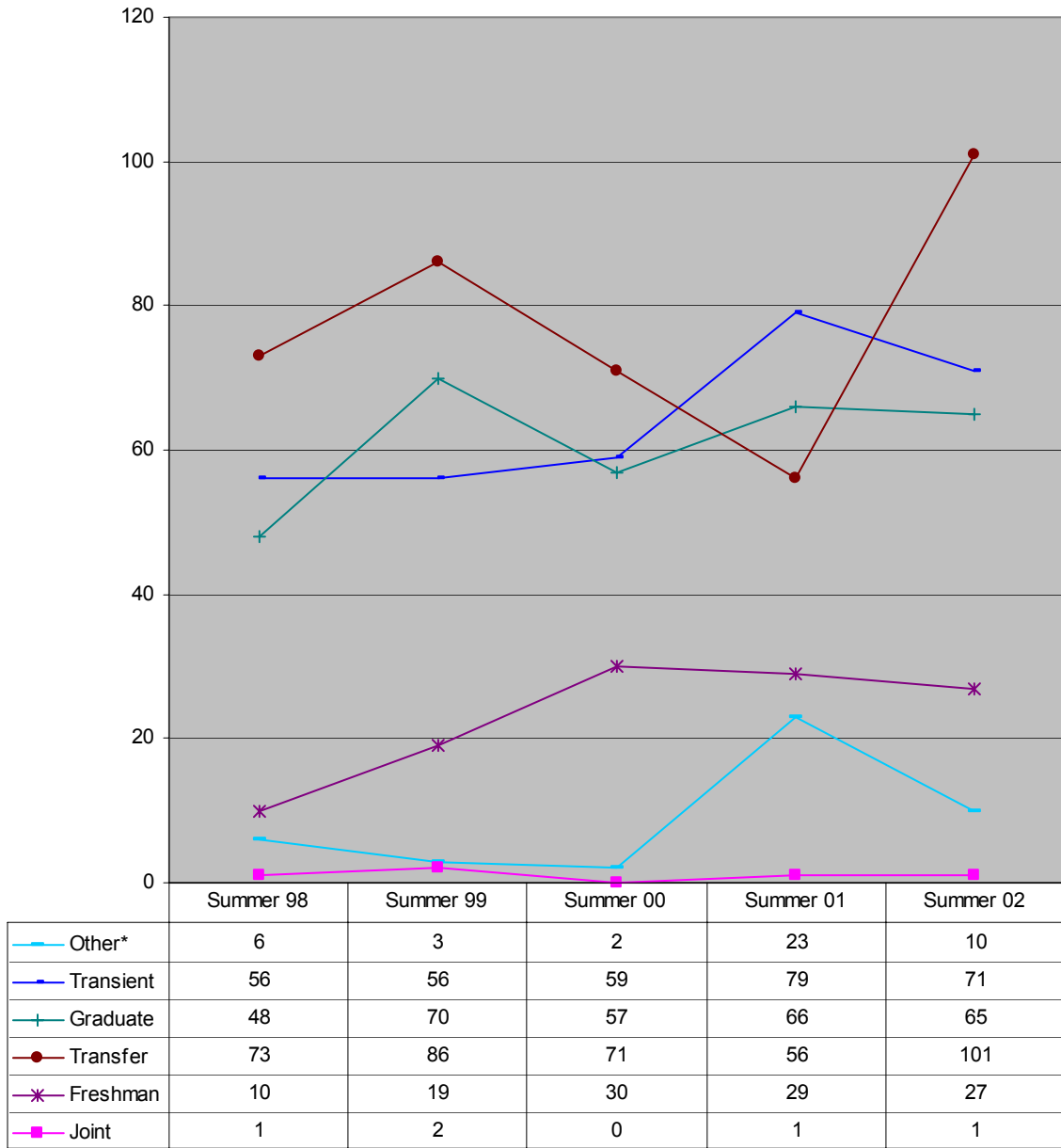
	Summer 98	Summer 99	Summer 00	Summer 01	Summer 02
Other*	8	4	2	66	34
Transient	66	67	73	91	83
Graduate	409	456	447	417	420
Senior	579	664	657	640	676
Junior	427	363	328	338	364
Sophomore	339	277	263	291	312
Freshman	184	173	143	124	164
Joint	2	2	1	2	2


“Other” includes students who already have a bachelors degree but are enrolled in ug courses, and auditors.



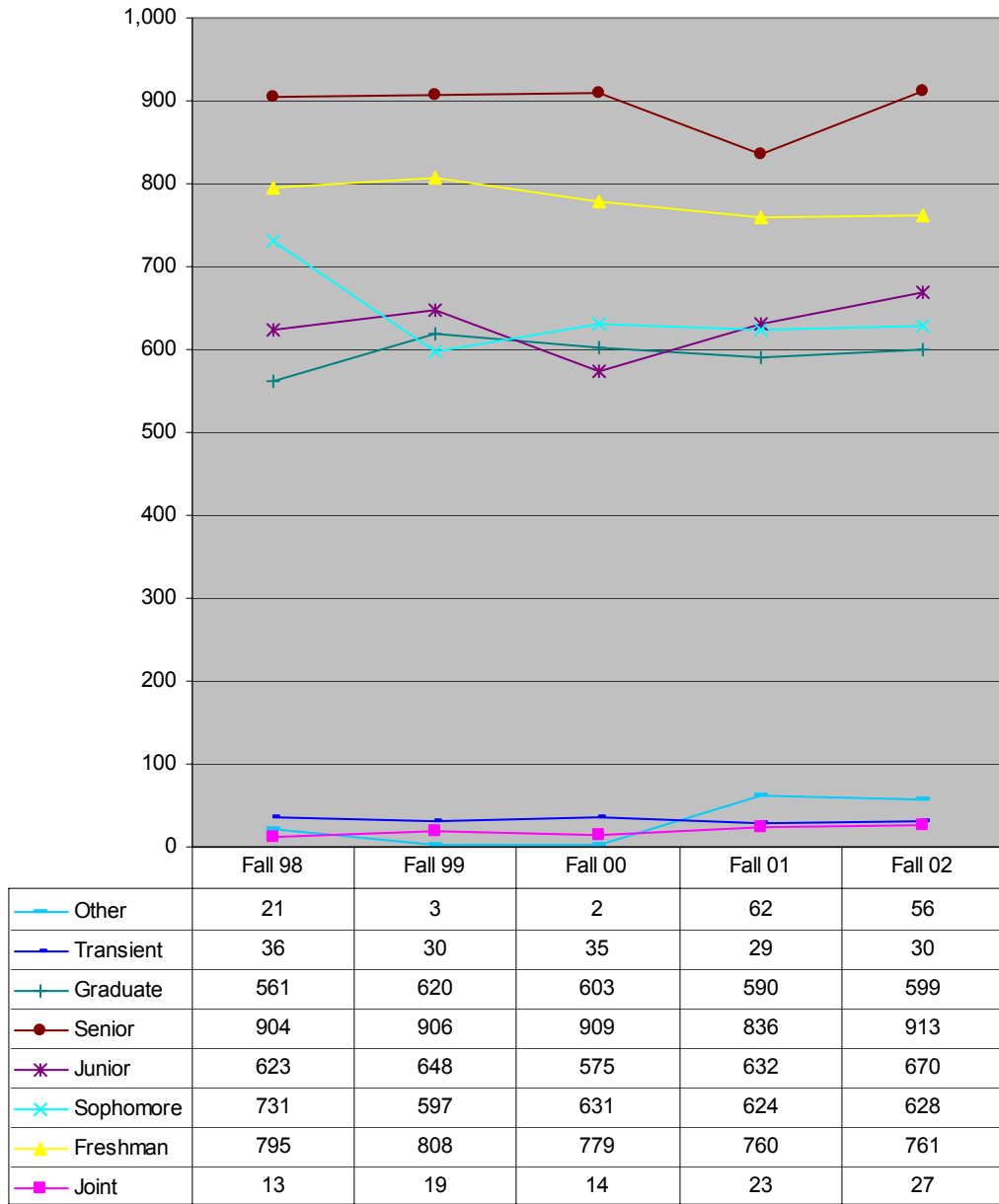
**During the past five summer terms, the number of seniors increased by 17%, while the number of students in other categories decreased.**

New Students by Type  
Summer 98-02



 During the past five summer terms, the numbers of new students in all categories except joint enrollment increased.

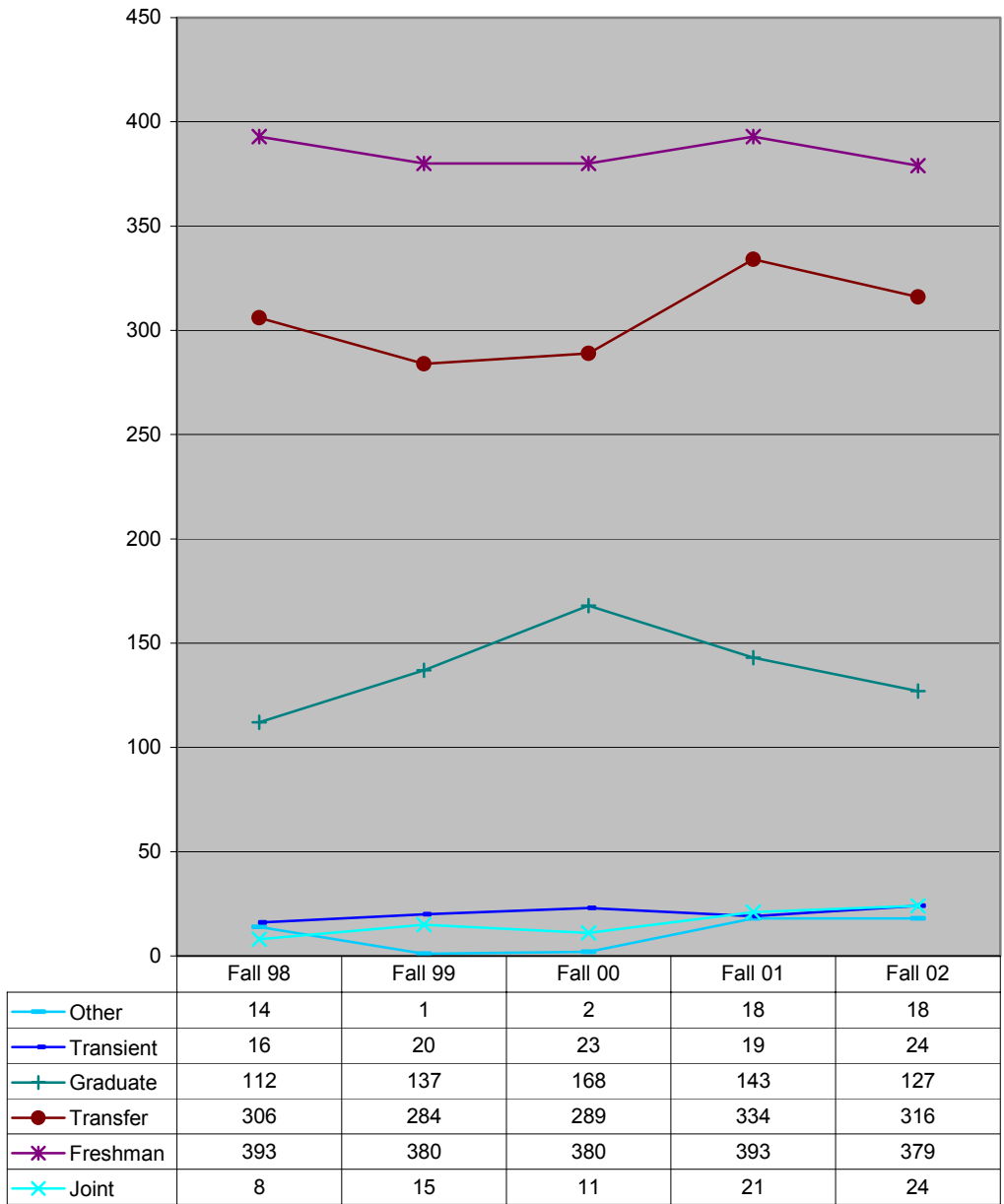
**Total Enrollment by Student Type  
Fall 98-02**



"Other" includes students who already have a bachelors degree but are enrolled in ug courses, and auditors.

 **During the past five fall terms, the numbers of sophomores and transient students declined, while the number of students in other categories grew.**

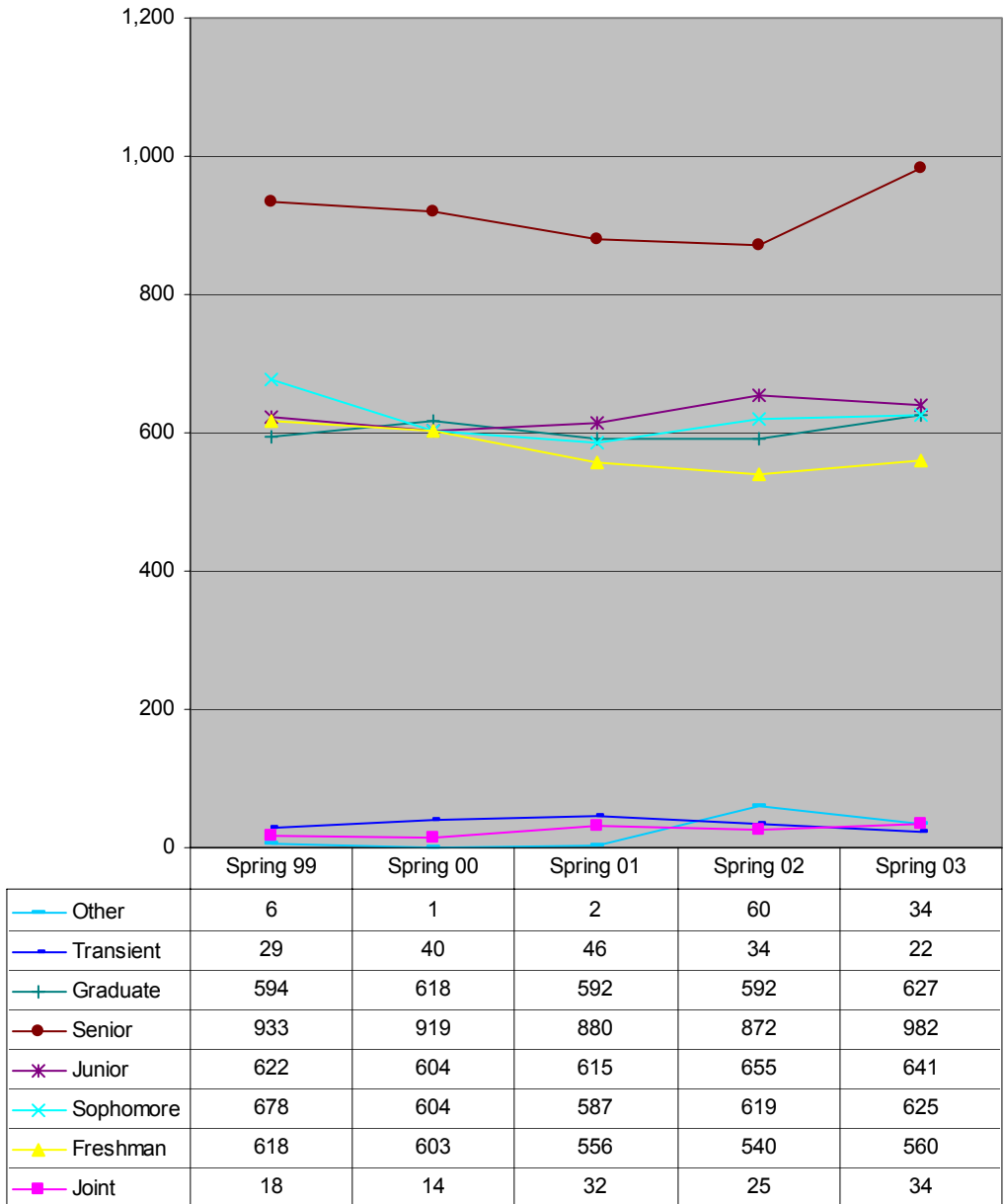
New Students by Type  
Fall 98-02




"Other" includes students who already have a bachelors degree but are enrolled in ug courses, and auditors.

 **Comparing Fall 98 to Fall 02, the number of new freshman students decreased, while the number of new students in other categories increased.**

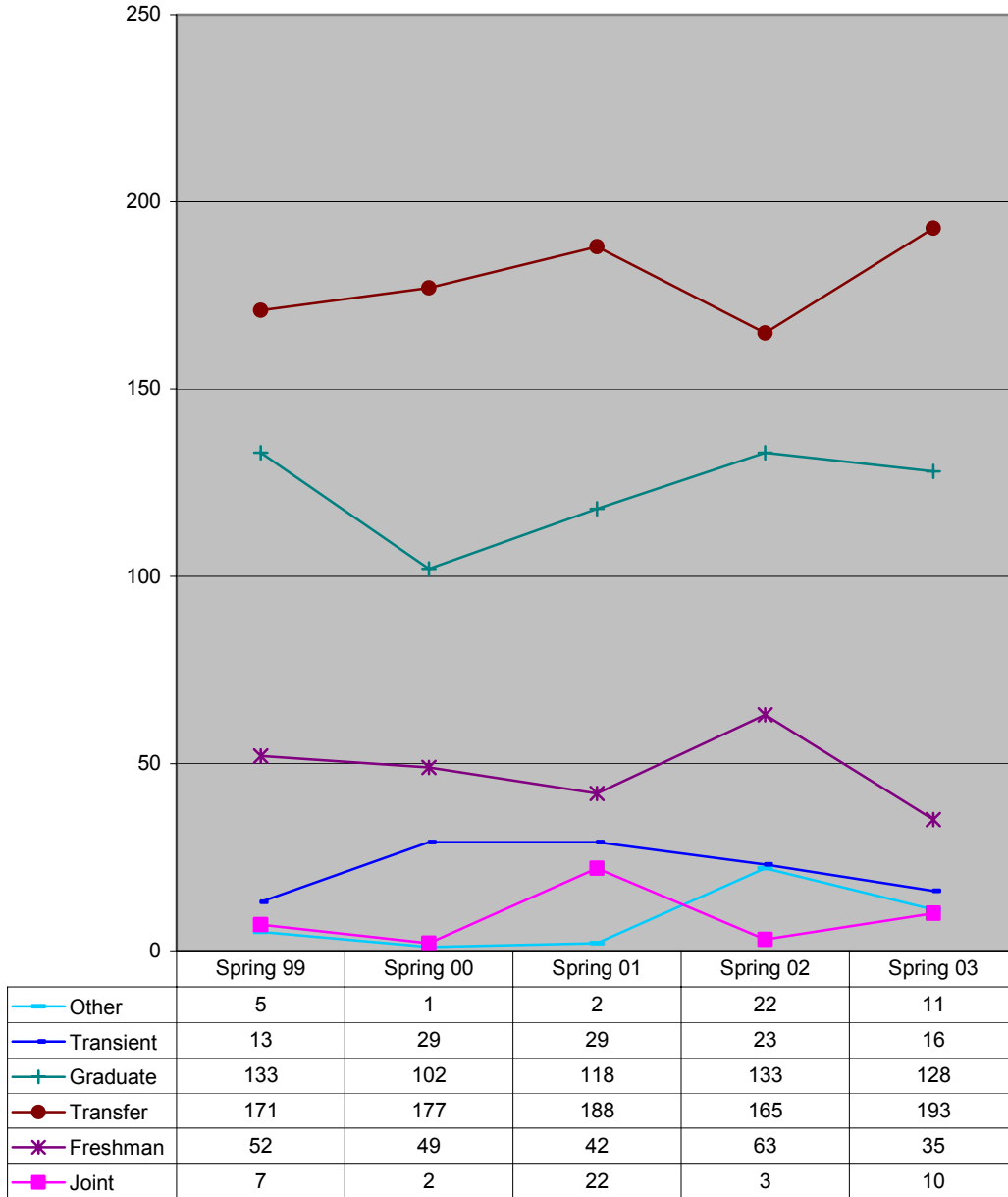
**Total Enrollment by Student Type  
Spring 99-03**




"Other" includes students who already have a bachelors degree but are enrolled in ug courses, and auditors.

 **Comparing Spring 99 to Spring 03, the number of freshman, sophomore and transient students decreased, while the number of students in other categories increased.**

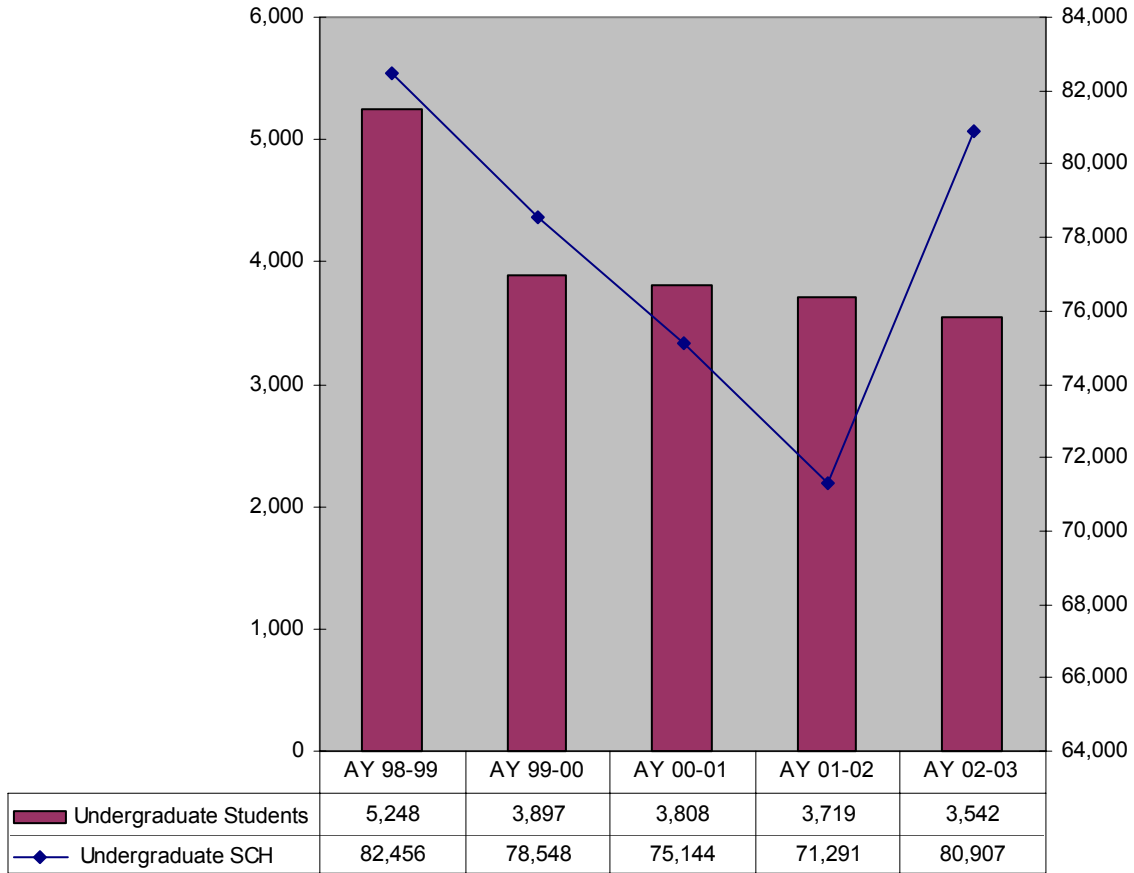
New Students by Type  
Spring 99-03



“Other” includes students who already have a bachelors degree but are enrolled in ug courses, and auditors.

 **Comparing Spring 99 to Spring 03, the number of freshman, sophomore and transient students decreased, while the number of students in other categories increased.**

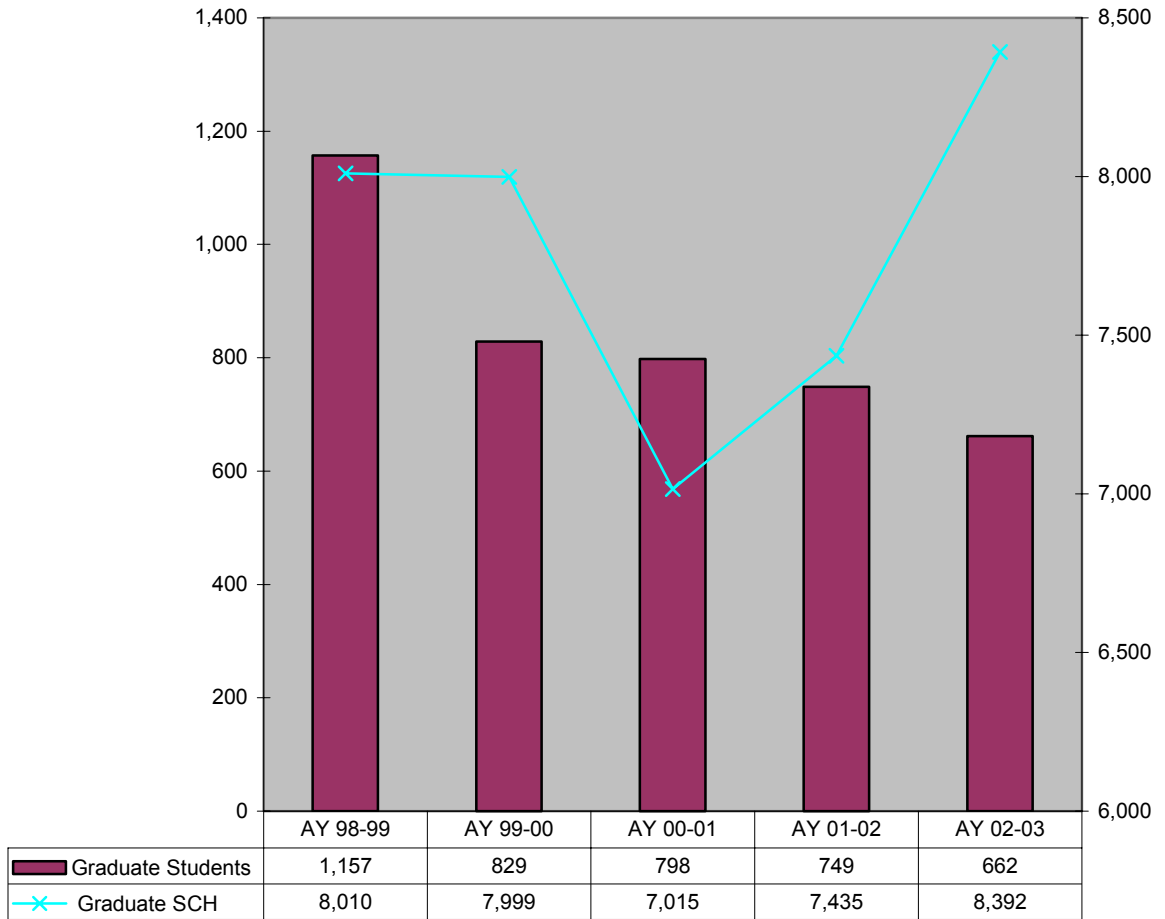
### Unduplicated Undergraduate Headcount vs Student Credit Hours AY 98-02




**While undergraduate headcount decreased by 33%, undergraduate credit hours produced decreased by only 2% during the past five academic years.**

Source: SPSU Banner Report WSFR0240B

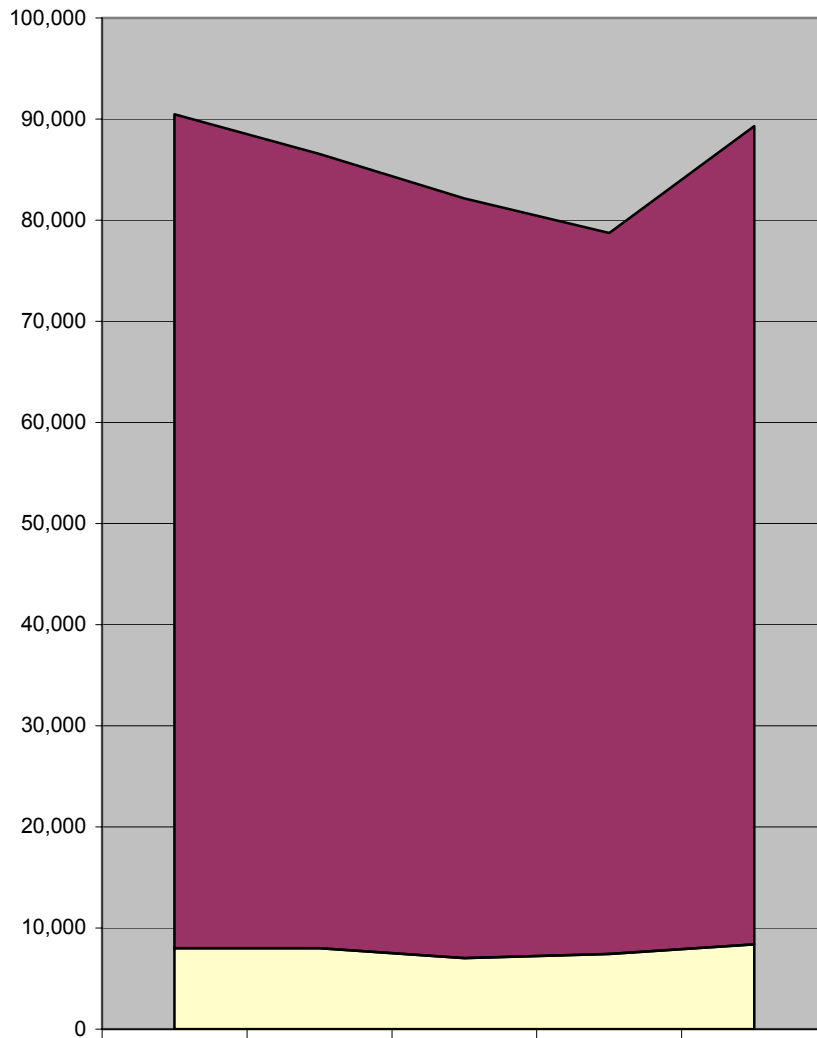
### Unduplicated Graduate Headcount vs Student Credit Hours AY 98-02




 While graduate headcount decreased by 43%, graduate credit hours produced increased by 5% during the past five academic years.

Source: SPSU Banner Report WSFR0240B

### Student Credit Hours by Level AY 98-02



	AY 98-99	AY 99-00	AY 00-01	AY 01-02	AY 02-03
Undergraduate SCH	82,456	78,548	75,144	71,291	80,907
Graduate SCH	8,010	7,999	7,015	7,435	8,392

 Even though graduate student credit hours increased by 5%, and undergraduate student credit hours decreased by 2% over the past five years, the proportion of graduate and undergraduate student credit hours remained the same.

### Top Feeder Institutions of Transfer Students by School AY 02-03

<b>All Majors (5 or more)</b>		<b>Arch/CET/Const (3 or more)</b>	
Georgia Institute of Technology	52	Kennesaw State University	14
Georgia Perimeter College	38	Georgia Institute of Technology	11
Kennesaw State University	33	Floyd College	10
Floyd College	24	Gwinnett Technical	7
Georgia State University	22	Georgia State University	6
Chattahoochee Technical Institute	15	Auburn University	5
State University of West Georgia	14	Middle Georgia	5
Atlanta Metropolitan College	13	Clayton College	5
Gwinnett Technical	12	Georgia Perimeter College	5
Clayton State College	11	Truett McConnell College	5
Chattanooga State Technical	11	Clemson University	5
Dekalb Technical Institute	10	University of Georgia	4
Columbus State	10	Athens Technical College	3
Georgia Southern University	9	Berry College	3
Middle Georgia College	9	Chattanooga State Technical	3
Dalton College	7	Columbus State	3
Gordon College	7	Georgia College & State University	3
Auburn University	6	Georgia Southern University	3
Clemson University	6	Gordon College	3
Morris Brown College	6	State University of West Georgia	3
Gainesville College	5	Valdosta State College	3
Foreign Colleges	5	<b>Eng Tech/Mgt (3 or more)</b>	
University of Georgia	5	Georgia Institute of Technology	24
Georgia Military College	5	Georgia Perimeter College	17
DeVry Institute	5	Atlanta Metropolitan College	9
Reinhardt College	5	Chattahoochee Technical Institute	9
Truett McConnell College	5	Floyd College	9
Athens Technical College	5	Kennesaw State University	9
Georgia College & State University	5	State University of West Georgia	7
<b>Computing/SE (3 or more)</b>		Dekalb Technical Institute	7
Georgia Perimeter College	15	Clayton State College	6
Georgia Institute of Technology	12	Georgia State University	5
Georgia State University	7	Georgia Southern University	5
Floyd College	4	Dalton State College	5
Atlanta Metropolitan College	3	DeVry Institute	5
Chattahoochee Technical Institute	3	Gainesville College	4
Dekalb Technical Institute	3	Columbus State	3
Chattanooga State Technical	3	Gwinnett Technical	3
<b>Arts &amp; Sci (3 or more)</b>		Morris Brown College	3
Georgia Institute of Technology	5	Darton College	3
Kennesaw State University	5	Abraham Baldwin Agricultural College	3
State University of West Georgia	3	Aiken Technical College	3
		Chattanooga State Technical	3

**Grade Distribution by Term  
AY 98-02**

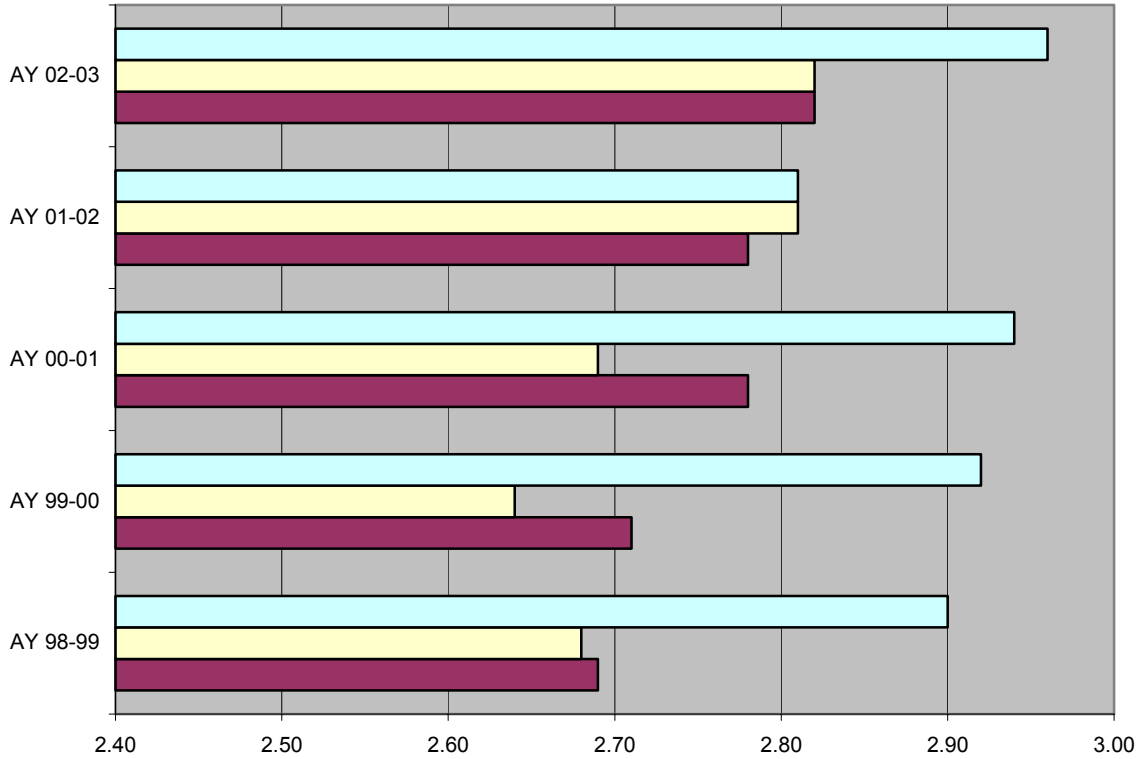
	Percent A's	Percent B's	Percent C's	Percent D's	Percent F's	Percent Other*	Average GPA
<b>AY 98-99</b>							
<b>Summer</b>	30.0%	31.0%	17.0%	4.0%	4.0%	14.0%	2.90
<b>Fall</b>	25.0%	27.0%	18.0%	6.0%	7.0%	16.0%	2.68
<b>Spring</b>	25.0%	27.0%	17.0%	6.0%	7.0%	16.0%	2.69
<b>AY 99-00</b>							
<b>Summer</b>	31.0%	29.0%	17.0%	4.0%	4.0%	13.0%	2.92
<b>Fall</b>	25.0%	27.0%	17.0%	6.0%	8.0%	15.0%	2.64
<b>Spring</b>	27.0%	26.0%	17.0%	6.0%	8.0%	15.0%	2.71
<b>AY 00-01</b>							
<b>Summer</b>	33.0%	28.0%	14.0%	4.0%	5.0%	15.6%	2.94
<b>Fall</b>	27.0%	27.0%	18.0%	6.0%	8.0%	15.5%	2.69
<b>Spring</b>	30.0%	27.0%	16.0%	5.0%	7.0%	15.3%	2.78
<b>AY 01-02</b>							
<b>Summer</b>	30.0%	27.0%	16.0%	5.0%	6.0%	14.0%	2.81
<b>Fall</b>	30.0%	29.0%	17.0%	5.0%	6.0%	12.0%	2.81
<b>Spring</b>	30.0%	28.0%	17.0%	5.0%	7.0%	13.0%	2.78
<b>AY 02-03</b>							
<b>Summer</b>	36.0%	27.0%	13.0%	4.0%	6.0%	12.0%	2.96
<b>Fall</b>	31.0%	27.0%	16.0%	5.0%	6.0%	14.0%	2.82
<b>Spring</b>	30.0%	27.0%	15.0%	5.0%	7.0%	16.0%	2.81




Over the past five years, the distribution of grades has remained quite stable.

Source: SPSU Banner Report WSHR0700

### Average GPA by Term AY 98-02

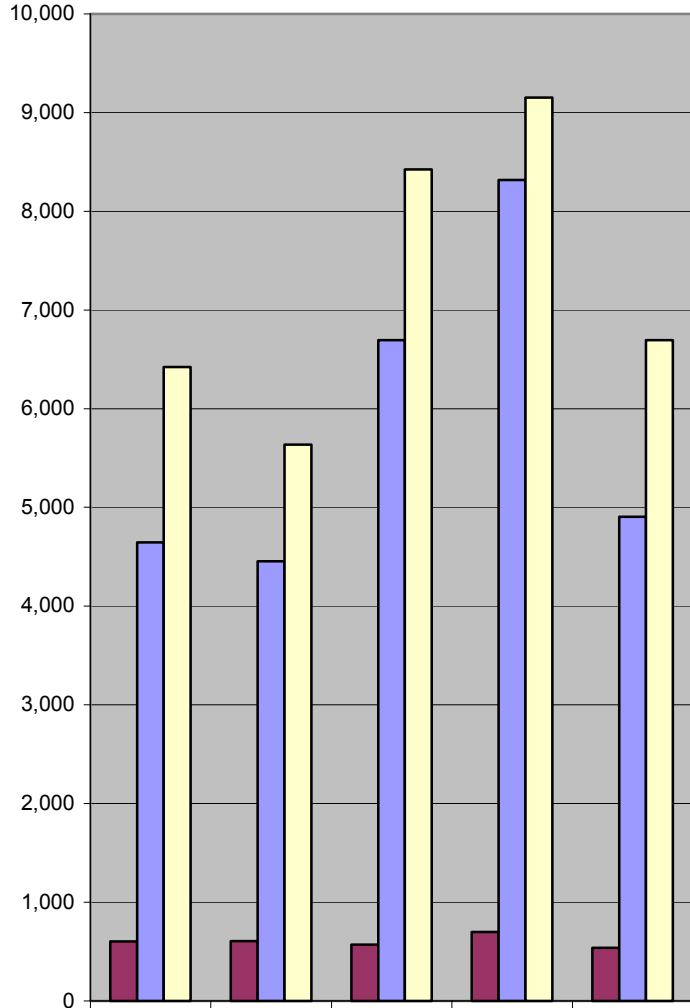


	AY 98-99	AY 99-00	AY 00-01	AY 01-02	AY 02-03
Summer	2.90	2.92	2.94	2.81	2.96
Fall	2.68	2.64	2.69	2.81	2.82
Spring	2.69	2.71	2.78	2.78	2.82

 Over the past five years, the average gpa for summer increased by 2%, the average gpa for fall increased by 5% and the average gpa for spring increased by 5%.

Source: SPSU Banner Report WSHR0700

**Continuing Education Enrollment  
FY 98-02**



	FY 98	FY 99	FY 00	FY 01	FY 02
Programs/Courses	603	604	571	700	537
Participants	4,645	4,453	6,696	8,315	4,906
Con Ed Units (CEUs)	6,423	5,637	8,424	9,152	6,694

 **Although the number of programs/courses declined by 11%, the number of participants increased by 6% and the number of CEUs increased by 4% during the past five years.**