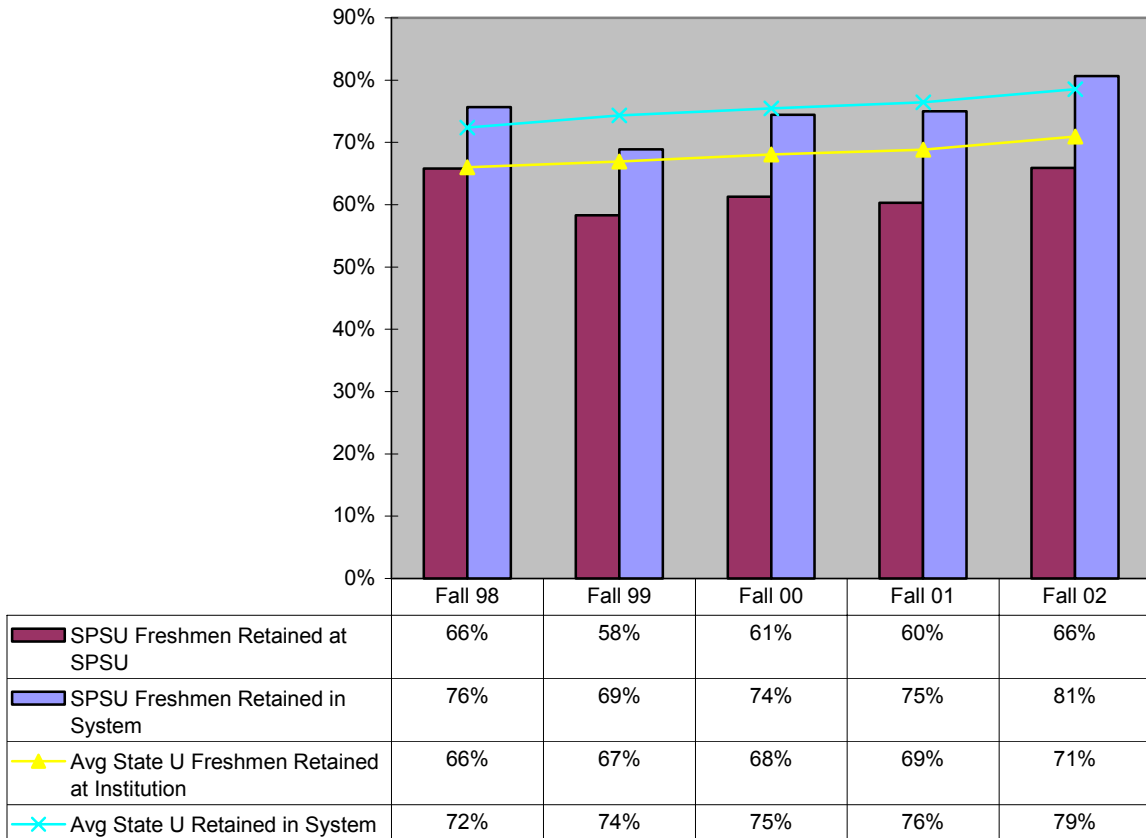


**Fall-to-Fall Retention Rates  
First-Time Full-time Freshmen  
SPSU vs USG State Universities  
Fall 98-02**



 **In Fall 02, the State Universities of the University System of Georgia had a freshman retention rate 5 percentage points higher than SPSU's freshman retention rate.**

Source: USG Retention Report

**Fall-to-Fall Retention and Graduation Rates  
First-time Full-time Freshmen by Major  
Fall 98-01**

	1998 Number Enrolled	% Retained after 1 year	% Retained after 2 years	% Retained after 3 years	% Retained after 4 years	% Graduated in 4 years
Apparel/Textile Engineering Technology	9	44%	33%	22%	22%	0%
Civil Engineering Technology	29	48%	45%	31%	21%	7%
Computer Engineering Technology	40	63%	45%	35%	20%	8%
Computer Science	78	56%	41%	24%	10%	9%
Construction	12	67%	42%	25%	17%	8%
Electrical Engineering Technology	35	66%	43%	20%	11%	3%
General Studies	50	40%	18%	4%	2%	0%
Industrial Distribution	1	0%	0%	0%	0%	0%
Industrial Engineering Technology	6	67%	33%	17%	17%	0%
Management	8	63%	38%	38%	25%	13%
Mathematics	1	0%	0%	0%	0%	0%
Mechanical Engineering Technology	36	39%	14%	11%	11%	0%
Physics	4	50%	25%	25%	0%	25%
Pre-Architecture	56	38%	20%	7%	7%	0%
Technical and Professional Communication	1	0%	0%	0%	0%	0%
Telecommunications Engineering Technology	1	100%	0%	0%	0%	0%
	1999 Number Enrolled	% Retained after 1 year	% Retained after 2 years	% Retained after 3 years		
Apparel/Textile Engineering Technology	10	70%	70%	50%		
Civil Engineering Technology	13	54%	46%	31%		
Computer Engineering Technology	41	54%	39%	20%		
Computer Science	79	49%	29%	22%		
Construction	11	46%	55%	46%		
Electrical Engineering Technology	40	63%	35%	33%		
General Studies	36	44%	3%	3%		
Industrial Engineering Technology	13	77%	77%	69%		
Management	5	60%	40%	40%		
Mathematics	5	60%	40%	40%		
Mechanical Engineering Technology	38	55%	32%	26%		
Physics	2	0%	0%	0%		
Pre-Architecture	34	59%	41%	27%		
Surveying and Mapping	2	0%	50%	50%		
Technical and Professional Communication	5	40%	0%	0%		
Telecommunications Engineering Technology	6	67%	50%	33%		
	2000 Number Enrolled	% Retained after 1 year	% Retained after 2 years			
Apparel/Textile Engineering Technology	4	50%	50%			
Architecture/Pre-Architecture	53	51%	34%			
Civil Engineering Technology	18	50%	22%			
Computer Engineering Technology	38	68%	58%			
Computer Science	89	46%	30%			
Construction	8	75%	38%			
Electrical Engineering Technology	26	39%	27%			
General Studies/Undeclared	43	14%	2%			
Industrial Engineering Technology	6	50%	17%			
Management	5	60%	40%			

Mathematics	1	100%	100%			
Mechanical Engineering Technology	47	43%	23%			
Physics	4	50%	50%			
Surveying and Mapping	1	0%	0%			
Technical and Professional Communication	1	100%	100%			
Telecommunications Engineering Technology	2	50%	0%			
	<b>2001 Number Enrolled</b>	<b>% Retained after 1 year</b>				
Apparel/Textile Engineering Technology	11	55%				
Civil Engineering Technology	25	44%				
Computer Engineering Technology	44	66%				
Computer Science	95	57%				
Construction	9	78%				
Electrical Engineering Technology	21	52%				
General Studies	35	37%				
Industrial Engineering Technology	4	100%				
Management	6	33%				
Mathematics	1	0%				
Mechanical Engineering Technology	40	80%				
Physics	6	50%				
Pre-Architecture	56	46%				
Software Engineering	1	0%				
Surveying and Mapping	2	50%				
Technical and Professional Communication	0	0%				
Telecommunications Engineering Technology	11	55%				

 **The Management program has the highest retention/graduation rate of freshmen after four years.**

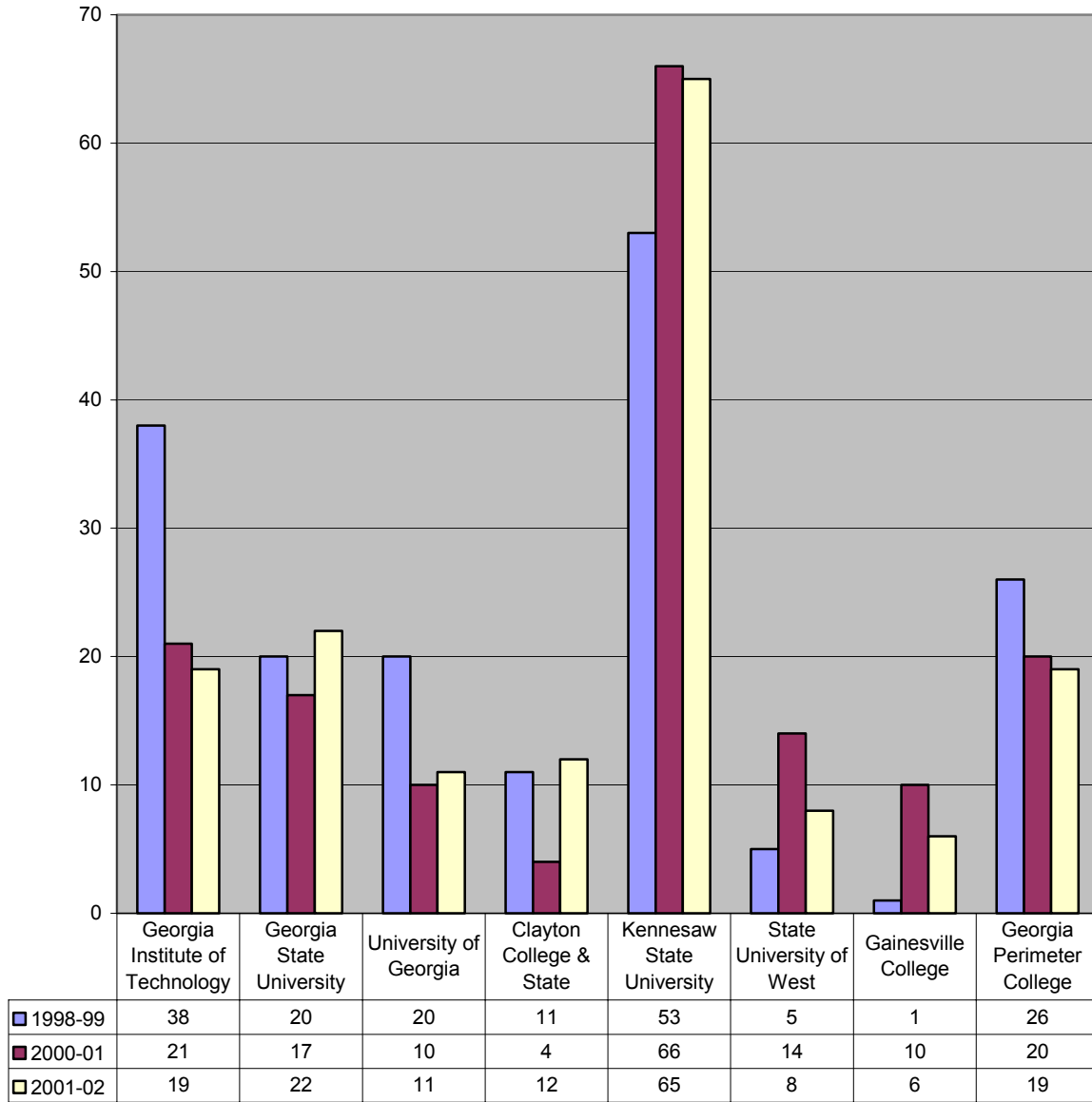
Source: SPSU Banner Report WSGR1620

**Fall-to-Fall Retention and Graduation Rates  
First-Time Transfers by Major  
Fall 98-01**

	1998 Number Enrolled	% Retain after 1 year	% Retain after 2 years	% Grad in 2 years	% Retain after 3 years	% Grad in 3 years	% Retain after 4 years	% Grad in 4 years
Apparel/Textile Engineering Technology	11	55%	46%	9%	46%	9%	27%	18%
Civil Engineering Technology	45	58%	40%	11%	16%	29%	13%	36%
Computer Engineering Technology	37	41%	35%	0%	22%	5%	14%	11%
Computer Science	114	47%	24%	12%	18%	18%	8%	25%
Construction	28	57%	50%	4%	21%	32%	7%	46%
Electrical Engineering Technology	62	53%	32%	5%	21%	8%	21%	16%
General Studies	18	17%	11%	6%	0%	6%	0%	6%
Industrial Engineering Technology	25	60%	36%	20%	20%	40%	8%	52%
Management	26	54%	35%	8%	19%	19%	4%	27%
Mathematics	8	38%	13%	13%	0%	13%	0%	13%
Mechanical Engineering Technology	51	45%	25%	4%	22%	4%	12%	12%
Physics	4	50%	25%	0%	25%	0%	0%	25%
Pre-Architecture	30	50%	23%	0%	17%	0%	17%	0%
Surveying and Mapping	2	50%	50%	0%	0%	0%	0%	0%
Technical and Professional Communication	5	40%	40%	20%	40%	20%	20%	20%
Telecommunications Engineering Tech	1	100%	100%	0%	0%	0%	0%	0%
	1999 Number Enrolled	% Retained after 1 year	% Retained after 2 years	% Graduated in 2 years	% Retained after 3 years	% Graduated in 3 years		
Apparel/Textile Engineering Technology	9	44%	56%	11%	44%	11%		
Civil Engineering Technology	28	43%	21%	7%	14%	14%		
Computer Engineering Technology	36	42%	31%	3%	25%	3%		
Computer Science	89	46%	25%	9%	14%	19%		
Construction	30	57%	50%	7%	30%	27%		
Electrical Engineering Technology	59	36%	22%	3%	20%	7%		
General Studies	27	26%	13%	11%	4%	0%		
Industrial Distribution	5	40%	60%	0%	20%	0%		
Industrial Engineering Technology	26	73%	35%	12%	19%	31%		
Management	23	52%	44%	4%	30%	17%		
Mathematics	4	50%	0%	25%	0%	25%		
Mechanical Engineering Technology	68	47%	31%	7%	21%	10%		
Physics	2	0%	0%	0%	0%	0%		
Pre-Architecture	39	31%	23%	0%	21%	0%		
Surveying and Mapping	8	25%	25%	13%	13%	13%		
Technical and Professional Communication	6	33%	17%	0%	0%	17%		
Telecomm Engineering Technology	5	40%	40%	0%	40%	0%		

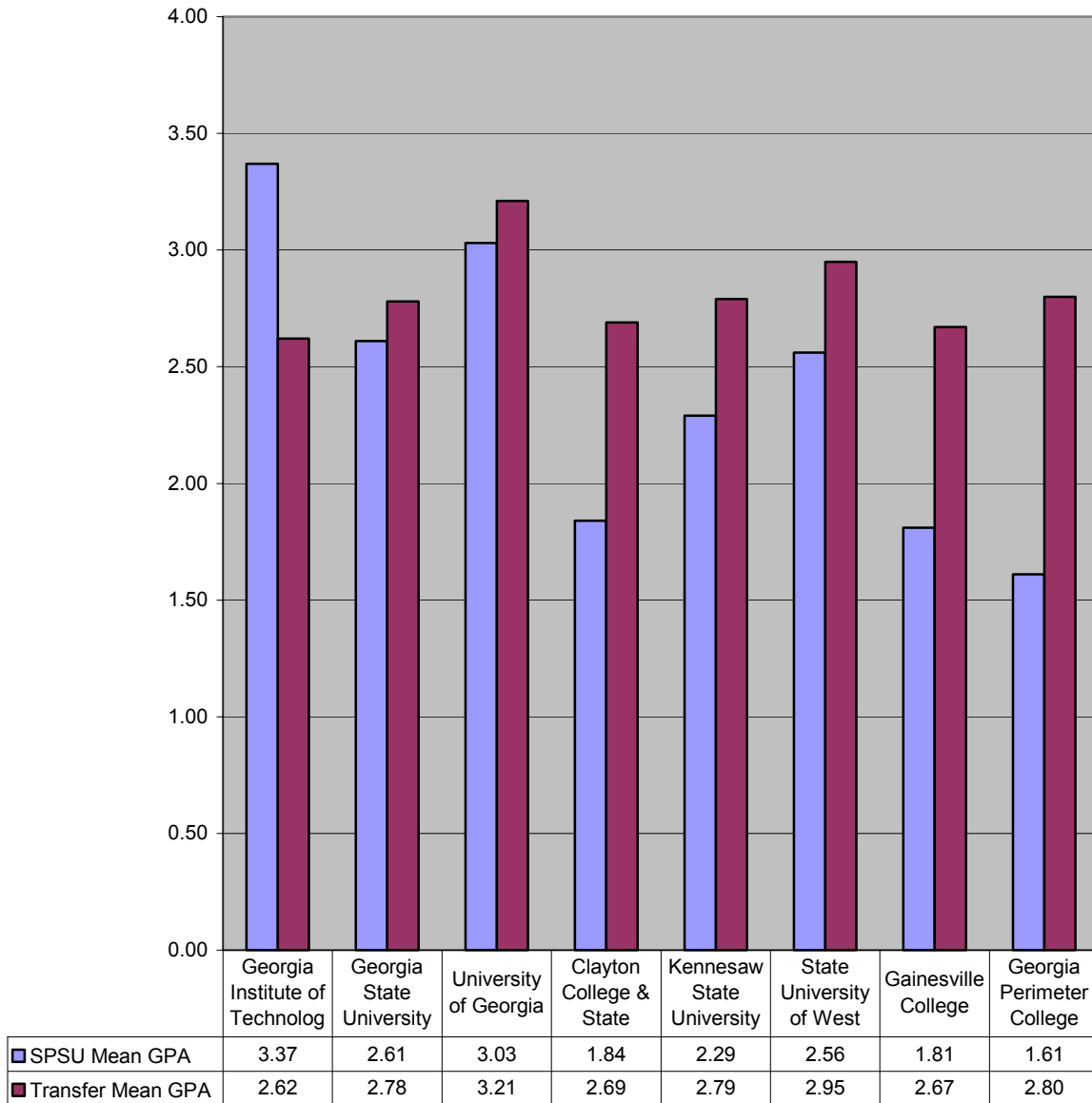
	2000 Number Enrolled	% Retain after 1 year	% Retain after 2 years	% Grad in 2 years				
Apparel/Textile Engineering Technology	9	22%	11%	22%				
Architecture/Pre-Architecture	44	55%	38%	0%				
Civil Engineering Technology	33	55%	27%	21%				
Computer Engineering Technology	39	62%	51%	3%				
Computer Science	84	57%	37%	10%				
Construction	25	68%	72%	4%				
Electrical Engineering Technology	58	41%	41%	7%				
General Studies	34	9%	3%	0%				
Industrial Distribution	2	0%	0%	50%				
Industrial Engineering Technology	24	46%	33%	4%				
Management	16	31%	6%	6%				
Mathematics	3	67%	0%	33%				
Mechanical Engineering Technology	42	38%	29%	2%				
Physics	5	40%	20%	0%				
Surveying and Mapping	8	63%	25%	25%				
Technical and Professional Communication	3	33%	33%	0%				
Telecomm Engineering Technology	5	0%	0%	0%				
	2001 Number Enrolled	% Retain after 1 year						
Apparel/Textile Engineering Technology	13	54%						
Applied Science	1	0%						
Civil Engineering Technology	59	37%						
Computer Engineering Technology	40	48%						
Computer Science	98	47%						
Construction	34	68%						
Electrical Engineering Technology	53	53%						
General Studies/Undeclared	27	22%						
Industrial Distribution	2	0%						
Industrial Engineering Technology	16	44%						
Information Technology	7	100%						
International Technical Communication	1	100%						
Management	29	55%						
Mathematics	6	50%						
Mechanical Engineering Technology	53	66%						
Physics	2	50%						
Pre-Architecture	35	57%						
Software Engineering	3	33%						
Surveying and Mapping	8	50%						
Technical and Professional Communication	13	77%						
Telecommunications Engineering Technology	19	42%						

**Transfers Out of SPSU to Other USG Institutions  
N>=10  
AY 99-02**



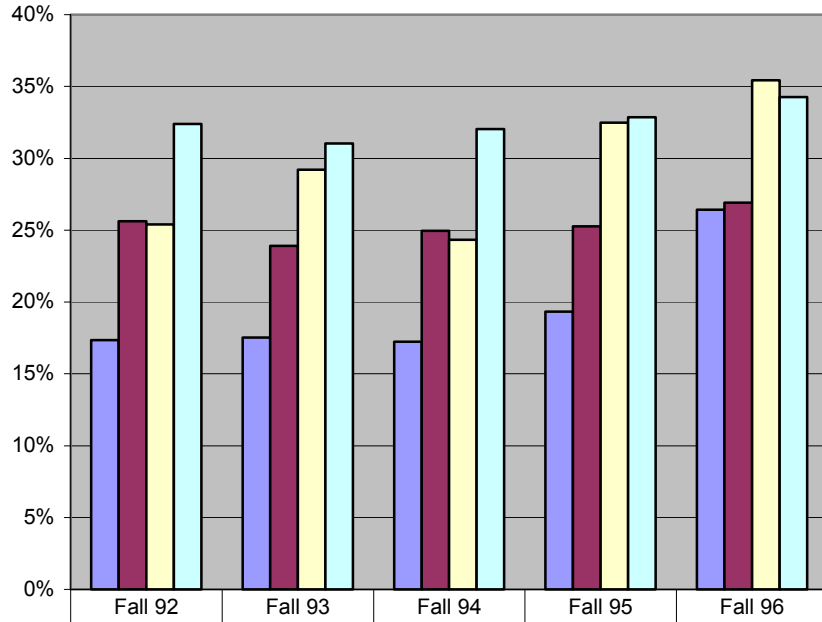
 Although the number of transfers out to Georgia Tech has decreased by 50% since 1998, the number of transfers out to Kennesaw has increased by 23%.

**Transfers Out of SPSU to Other USG Institutions  
GPA at SPSU and After One Year at Transfer Institution  
AY 2001-02**



 **One year after transfer, students' average GPA at Georgia Tech declined by 22%, but it increased at all the other institutions.**

**6-Year Graduation Rates  
SPSU vs USG State Universities  
First-Time Full-time Freshmen Entering Fall 92-96**



	Fall 92	Fall 93	Fall 94	Fall 95	Fall 96
■ Freshmen graduating from SPSU in 6-yrs	17%	18%	17%	19%	26%
■ Freshmen graduating from USG State U in 6-Yrs	26%	24%	25%	25%	27%
□ SPSU Freshmen graduating from USG in 6-yrs	25%	29%	24%	32%	35%
□ State U Freshmen graduating from USG in 6-Yrs	32%	31%	32%	33%	34%

 **The graduation rate of SPSU freshmen from SPSU has increased by 9 percentage points over the past five years.**

 **The graduation rate of SPSU freshmen from other USG schools has increased by 10 percentage points over the past five years.**

**4, 5, and 6-Year Graduation Rates  
First-time, Full-time Freshmen Entering Fall 1996  
by Ethnicity**

	Entering Fall 1996	Receiving Degree By Summer 2000	Four-Year Graduation Rate		
<b>First Time, Full-Time Freshmen</b>					
Nonresident Alien	2	0	0%		
Black	59	1	2%		
American Indian	1	0	0%		
Asian	24	3	13%		
Hispanic	10	0	0%		
White	271	19	7%		
<b>Total</b>	<b>367</b>	<b>23</b>	<b>6%</b>		
	Entering Fall 1996	Receiving Degree By Summer 2001	Five-Year Graduation Rate		
<b>First Time, Full-Time Freshmen</b>					
Nonresident Alien	2	0	0%		
Black	59	10	19%		
American Indian	1	0	0%		
Asian	24	8	46%		
Hispanic	10	1	10%		
White	271	47	24%		
<b>Total</b>	<b>367</b>	<b>66</b>	<b>18%</b>		
	Entering Fall 1996	Receiving Degree By Summer 2002	Six-Year Graduation Rate	Transfer Out by Summer 2002	Six-Year Transfer Out Rate
<b>First Time, Full-Time Freshmen</b>					
Nonresident Alien	2	0	0%	0	0%
Black	59	15	44%	8	14%
American Indian	1	0	0%	1	100%
Asian	24	9	83%	6	25%
Hispanic	10	2	30%	3	30%
White	271	72	51%	92	34%
<b>Total</b>	<b>367</b>	<b>98</b>	<b>27%</b>	<b>110</b>	<b>30%</b>



The six-year graduation rate for Asians is 32 percentage points higher than for Whites.