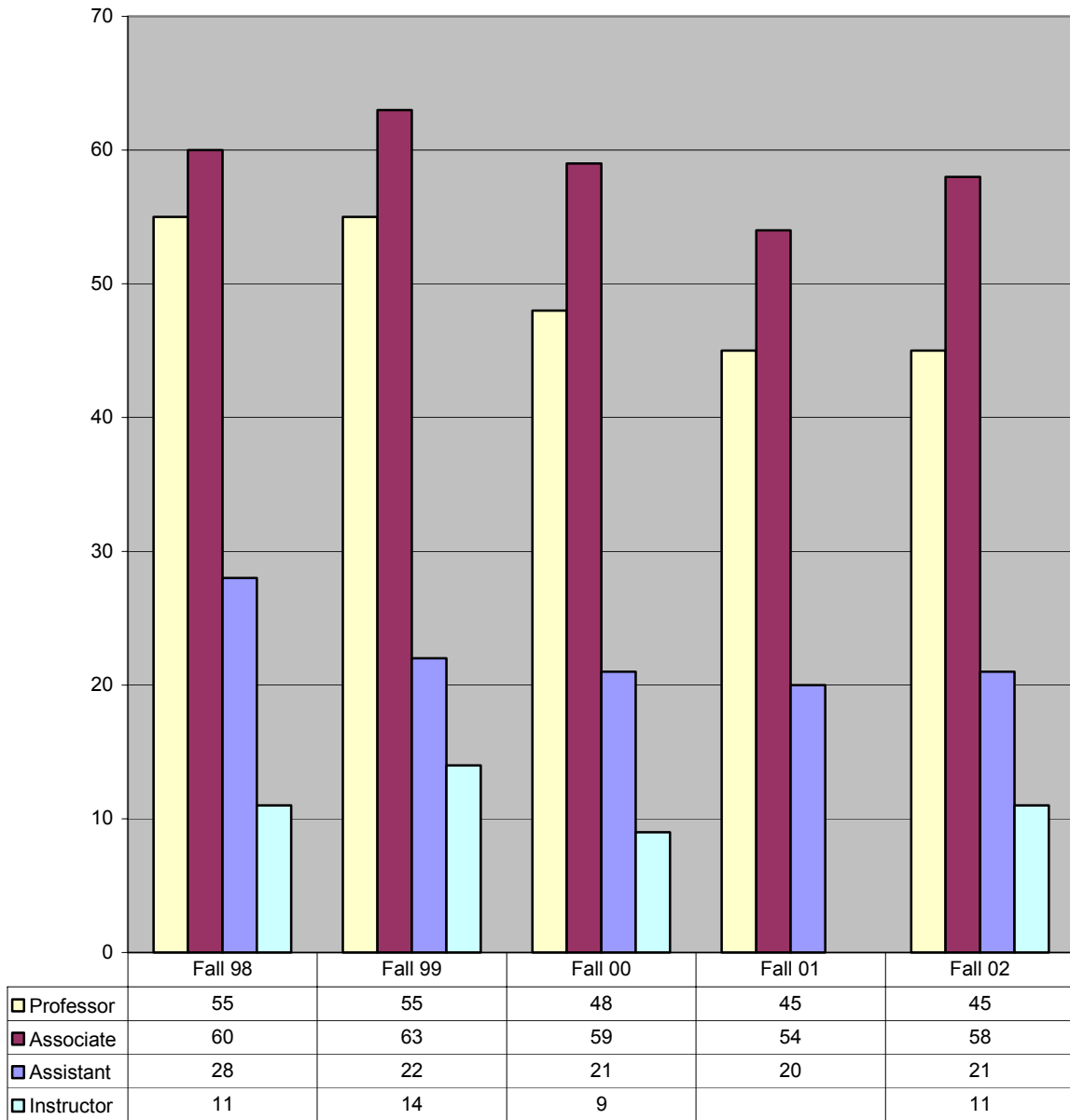


### Full-time Faculty by Rank Fall 98-02



 There has been a 12% decline in the number of full-time faculty over the past five years.

**Average Faculty Salaries by Rank and Gender  
Fall 98-02**

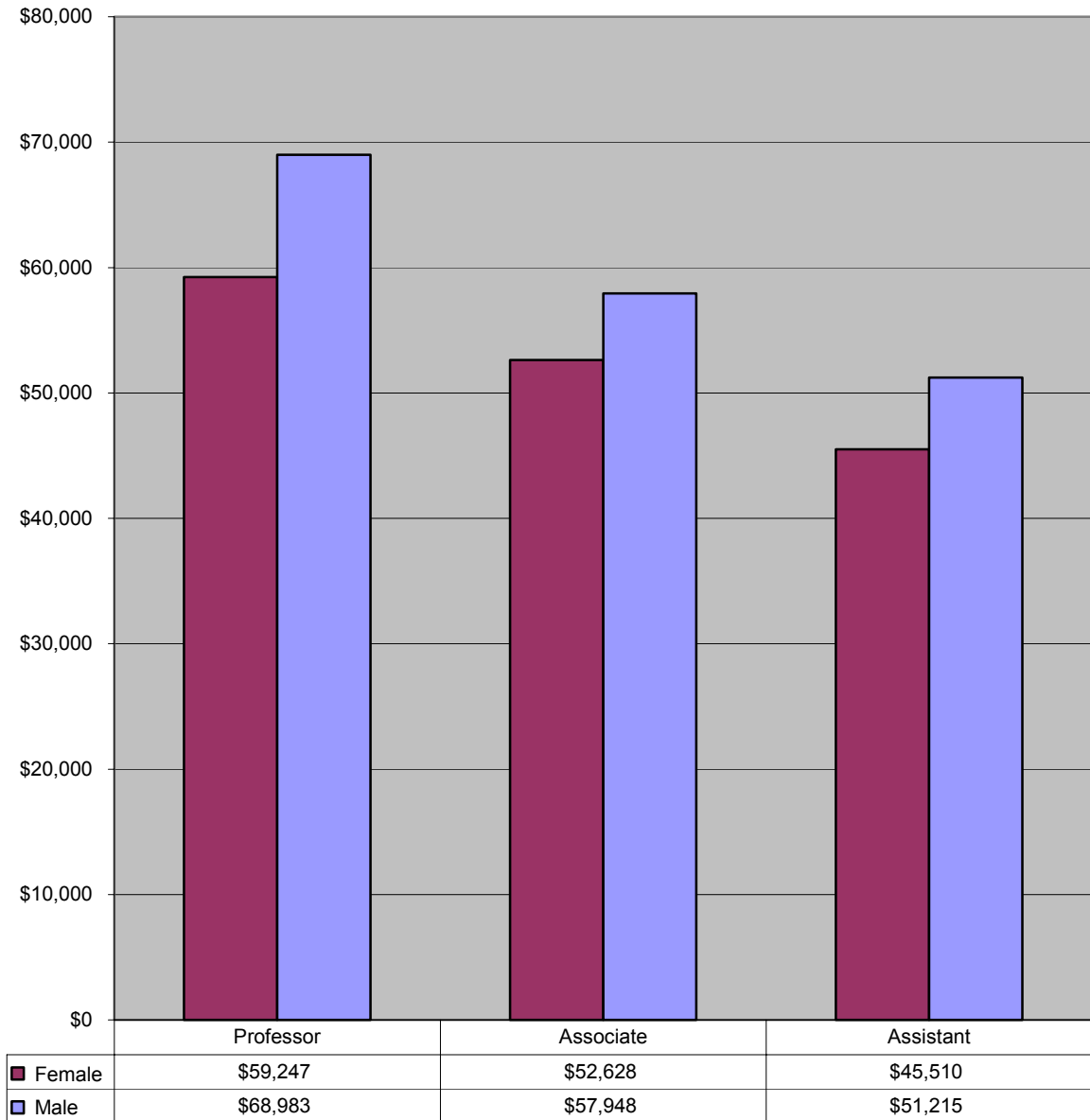
	Fall 98	Fall 99	Fall 00	Fall 01	Fall 02
<b>Professor</b>					
<b>Male</b>	\$59,797	\$62,335	\$64,412	\$67,814	\$68,983
<b>Female</b>	\$58,365	\$60,157	\$61,829	\$64,769	\$59,247
<b>Associate</b>					
<b>Male</b>	\$51,585	\$53,527	\$56,218	\$57,242	\$57,948
<b>Female</b>	\$44,614	\$49,485	\$51,624	\$55,168	\$52,628
<b>Assistant</b>					
<b>Male</b>	\$45,831	\$47,238	\$48,771	\$51,477	\$51,215
<b>Female</b>	\$38,177	\$41,155	\$45,420	\$43,758	\$45,510
<b>Instructor</b>					
<b>Male</b>	\$37,416	\$40,506	\$40,660		\$43,377
<b>Female</b>	\$35,376	\$40,577	\$41,873		\$48,167



Female Instructors experienced the largest five-year increase in average salary (36%).

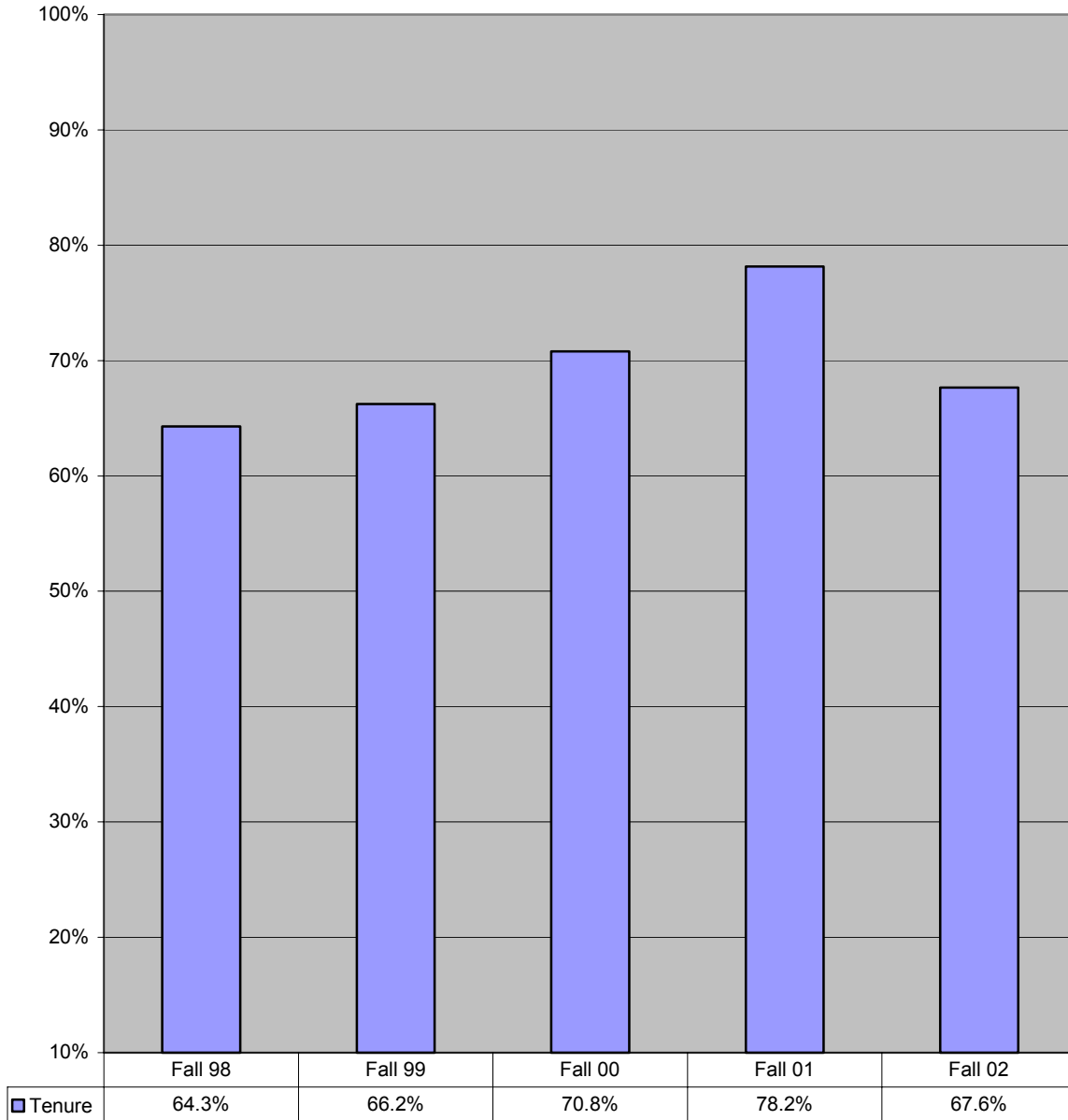
Source: AAUP Annual Faculty Compensation Survey

### Average Faculty Salaries by Rank and Gender Fall 02



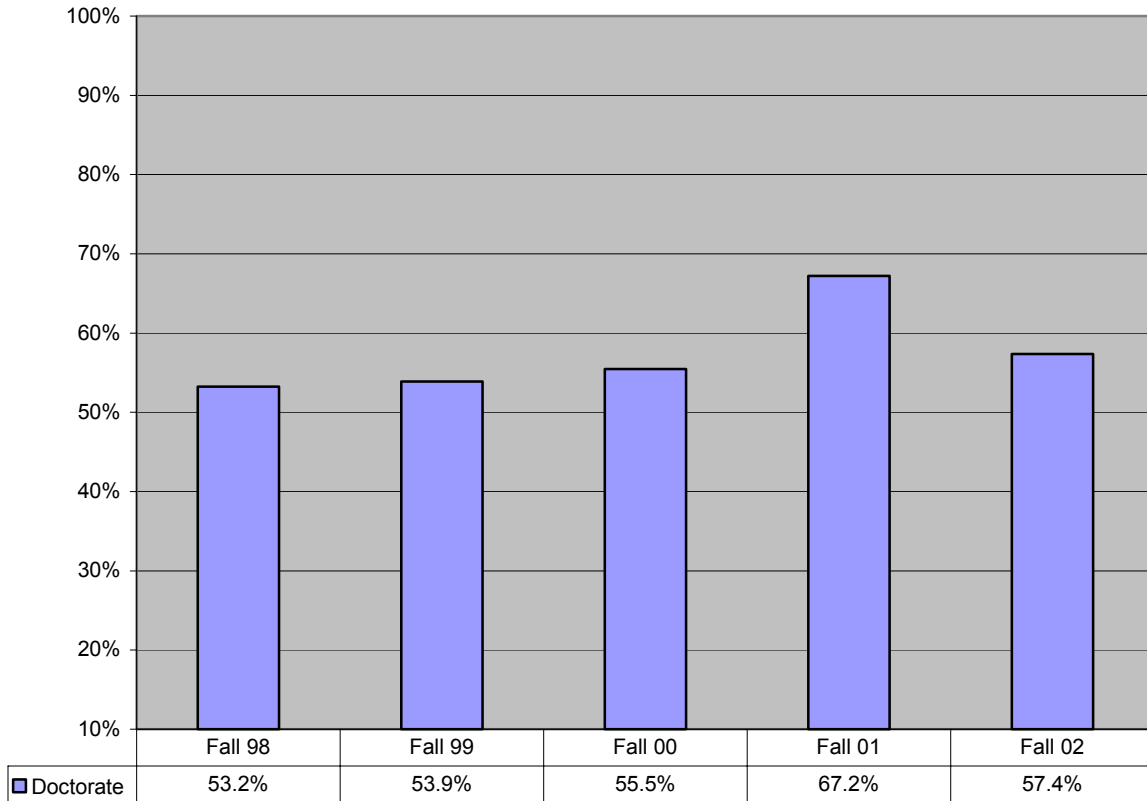
 The largest disparity between male and female average salaries is at the Professor level (\$9,737).

**Percentage of Full-time Faculty with Tenure  
Fall 98-02**



 **From Fall 01 to Fall 02, the portion of full-time faculty who are tenured fell by 11 percentage points.**

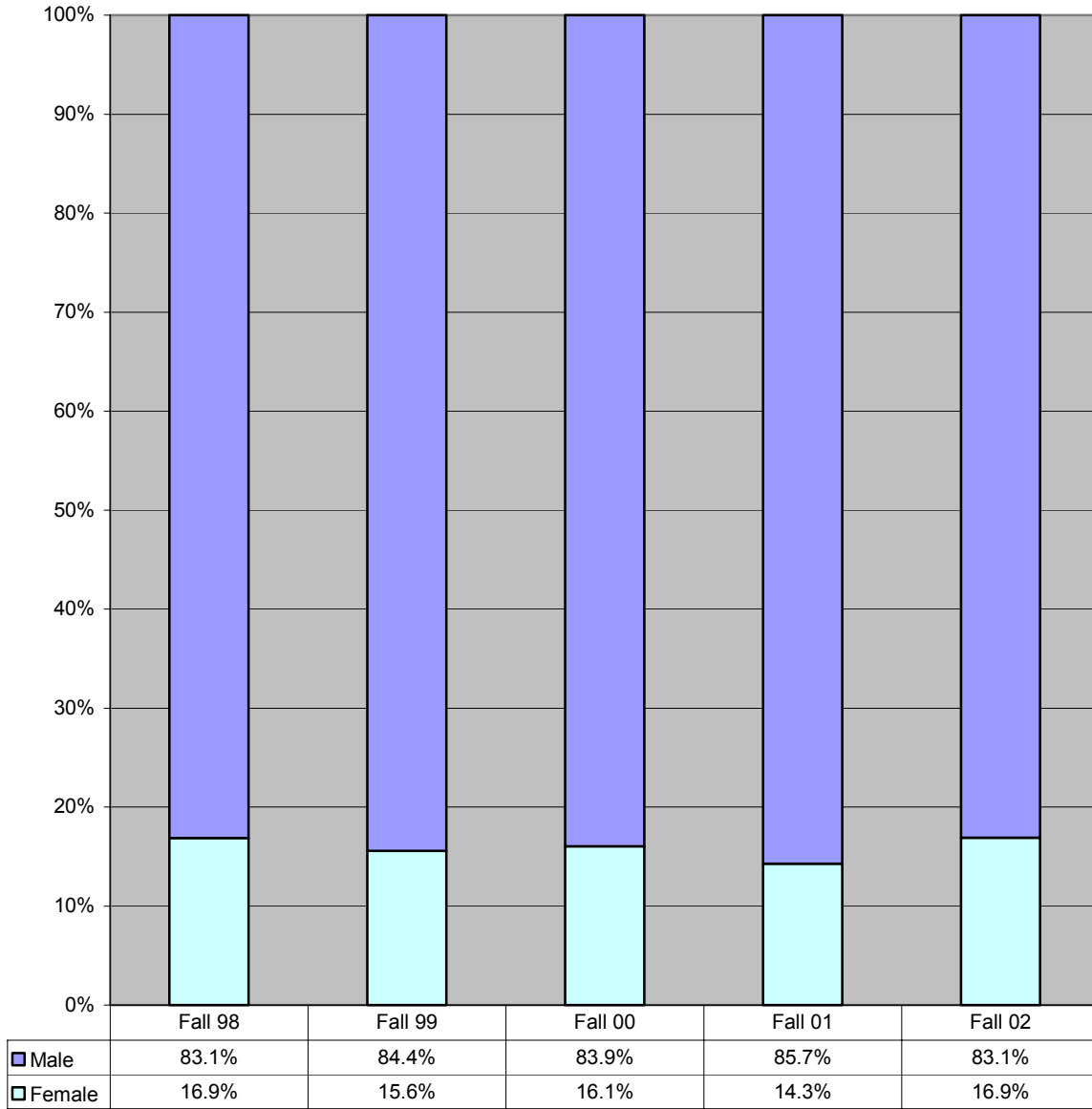
**Percentage of Full-time Faculty with Doctorate  
Fall 98-02**



**From Fall 02 to Fall 02, the portion of full-time faculty with a doctorate fell by 10 percentage points.**

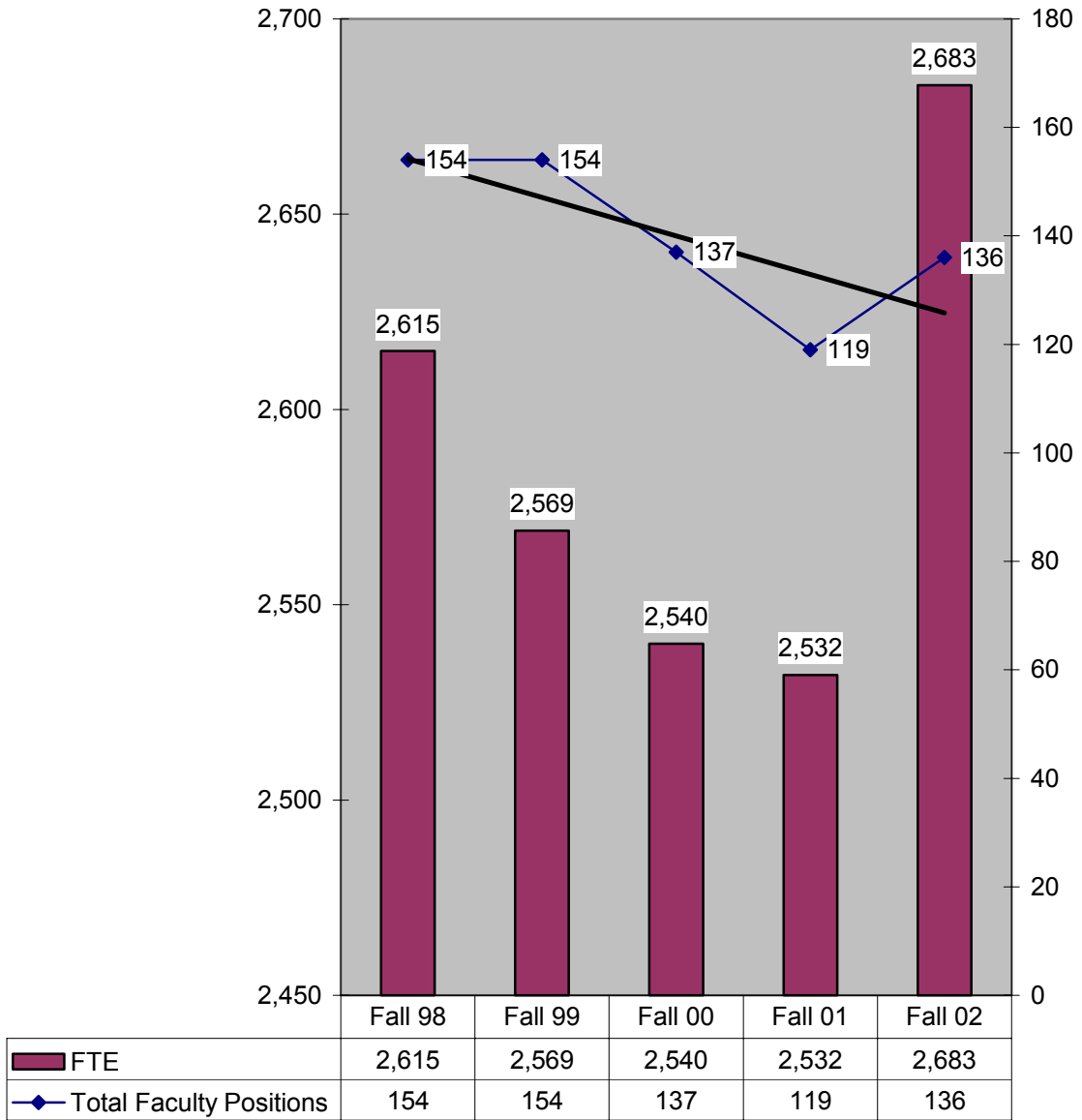
Source: Office of Vice President for Academic Affairs


**Percentage of  
Full-time Faculty by Gender  
Fall 98-02**



 **The gender mix of full-time faculty has remained the same over the past five years.**

**FTE Enrollment vs Faculty Positions  
with Trendline  
Fall 98-02**




 Although FTE enrollment grew by 6% from Fall 01 to Fall 02, the number of faculty positions grew by 14% during that same period.

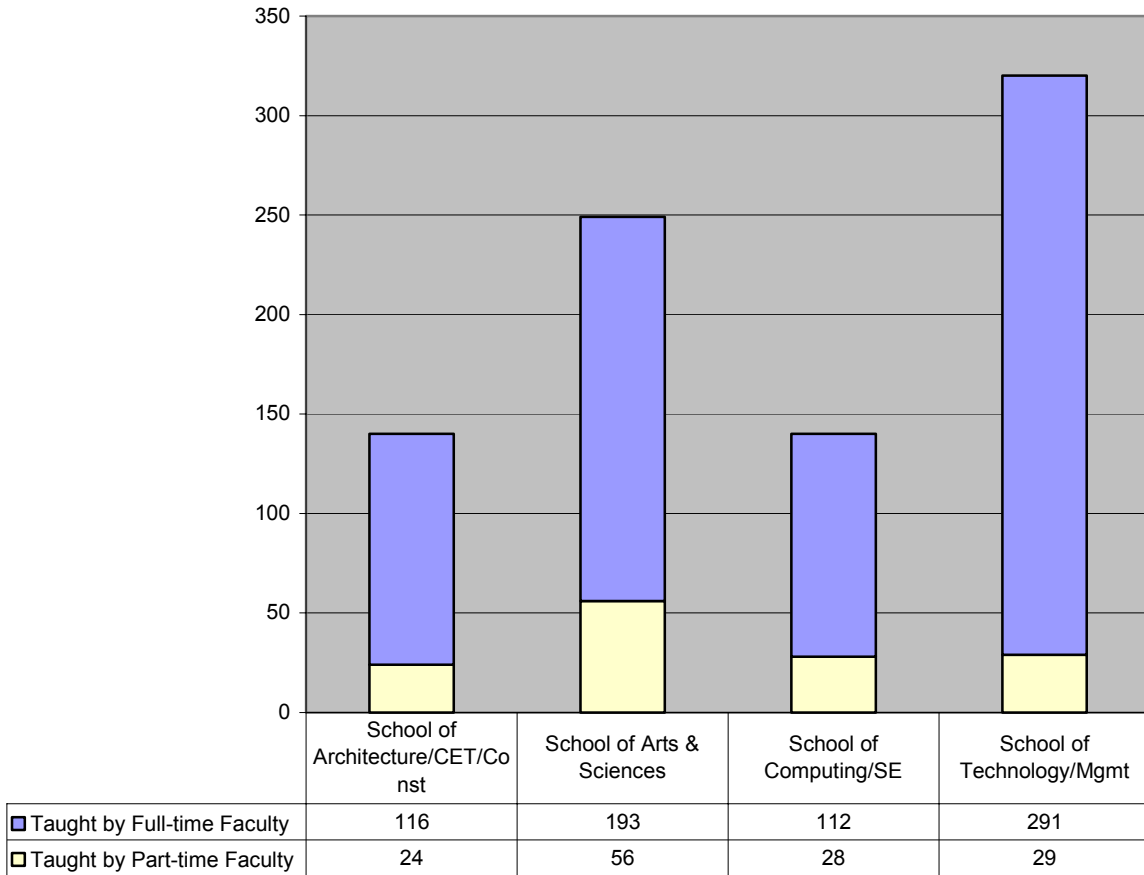
**Class Sections Taught by Faculty Type, School and Program  
Fall 02**

	<b>Fall 2002 Total Sections</b>	<b>Sections Taught by Full-time Faculty</b>	<b>Sections Taught by Part-time Faculty</b>
<b>School of Architecture/CET/Const</b>	140	116	24
<b>School of Arts &amp; Sciences</b>	249	193	56
<b>School of Computing/SE</b>	140	112	28
<b>School of Technology/Mgmt</b>	320	291	29
<b>Total</b>	849	712	137
<b>Apparel and Textile Engineering Technology</b>	26	26	0
<b>Architecture</b>	50	36	14
<b>Civil Engineering Technology</b>	49	43	6
<b>Computer Science</b>	92	74	18
<b>Construction</b>	41	37	4
<b>Electrical and Computer Engineering Technology</b>	125	113	12
<b>Humanities and Technical Communication</b>	84	53	31
<b>Industrial Engineering Technology</b>	40	35	5
<b>Information Technology</b>	17	12	5
<b>Management</b>	27	19	8
<b>Mathematics</b>	50	43	7
<b>Mechanical Engineering Technology</b>	102	98	4
<b>Physics, Chemistry, and Biological Sciences</b>	63	61	2
<b>Social and International Studies</b>	52	36	16
<b>Software Engineering</b>	31	26	5

 In Fall 02, the School of Arts & Sciences taught the greatest portion of sections with part-time faculty (22%).

 In Fall 02, the Humanities and Technical Communication program taught the greatest portion of sections with part-time faculty (37%).

### Class Sections Taught by School and Faculty Type Fall 02





 In Fall 02, the School of Arts & Sciences offered the most class sections taught by part-time faculty.

Source: SPSU Banner Reports WSFR0241, WSSR0200

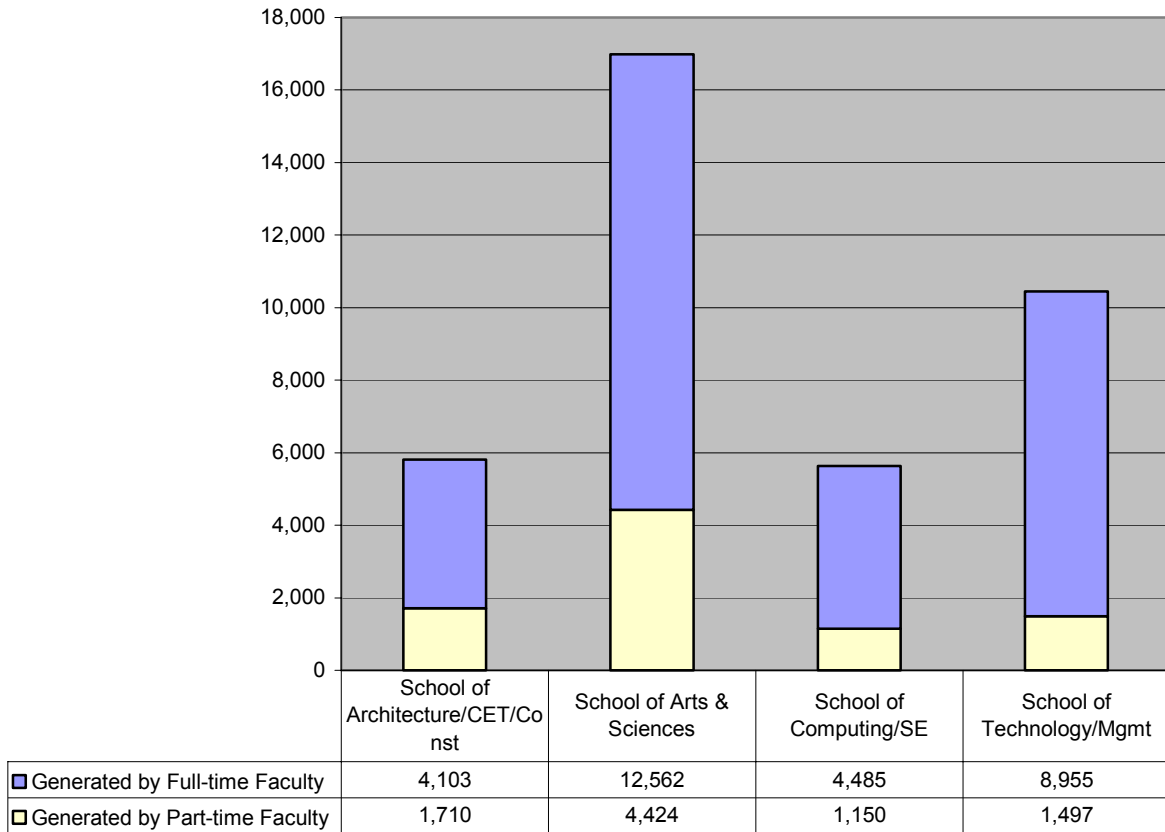
**Student Credit Hours Generated by Faculty Type, School and Program  
Fall 02**


	<b>Fall 2002 Total SCH</b>	<b>SCH Generated by Full-time Faculty</b>	<b>SCH Generated by Part-time Faculty</b>
<b>School of Architecture/CET/Const</b>	5,813	4,103	1,710
<b>School of Arts &amp; Sciences</b>	16,986	12,562	4,424
<b>School of Computing/SE</b>	5,635	4,485	1,150
<b>School of Technology/Mgmt</b>	10,452	8,955	1,497
<b>Total</b>	<b>38,886</b>	<b>30,105</b>	<b>8,781</b>
<b>Apparel and Textile Engineering Technology</b>	260	260	
<b>Architecture</b>	2,389	1,401	988
<b>Civil Engineering Technology</b>	1,599	1,227	372
<b>Computer Science</b>	3,736	2,947	789
<b>Construction</b>	1,825	1,475	350
<b>Electrical and Computer Engineering Technology</b>	3,910	3,462	448
<b>Humanities and Technical Communication</b>	5,007	2,939	2068
<b>Industrial Engineering Technology</b>	1,667	1,302	365
<b>Information Technology</b>	744	491	253
<b>Management</b>	2,469	1,881	588
<b>Mathematics</b>	5,258	4,214	1044
<b>Mechanical Engineering Technology</b>	2,146	2,050	96
<b>Physics, Chemistry, and Biological Sciences</b>	2,547	2,355	192
<b>Social and International Studies</b>	4,174	3,054	1120
<b>Software Engineering</b>	1,155	1,047	108

 In Fall 02, the School of Technology and Management generated the smallest portion of student credit hours taught by part-time faculty (14%).

 In Fall 02, the Architecture program and the Humanities & Technical Communication program generated the greatest portion of student credit hours taught by part-time faculty (41%).

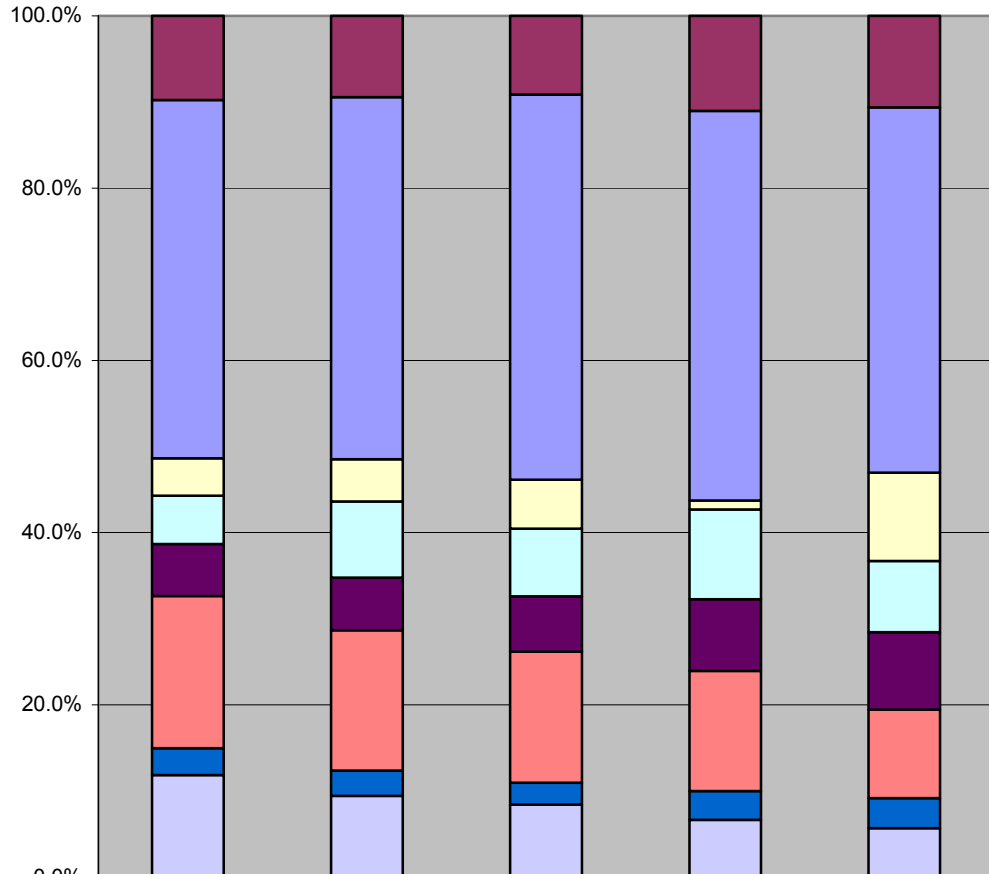
### Student Credit Hours Generated by School and Faculty Type Fall 02



 From Fall 01 to Fall 02, the School of Computing & Software Engineering experienced the greatest increase in portion of student credit hours taught by part-time faculty (74%).

Source: SPSU Banner Reports WSFR0241, WSSR0200

### Employees by EEO Category Fall 95-02

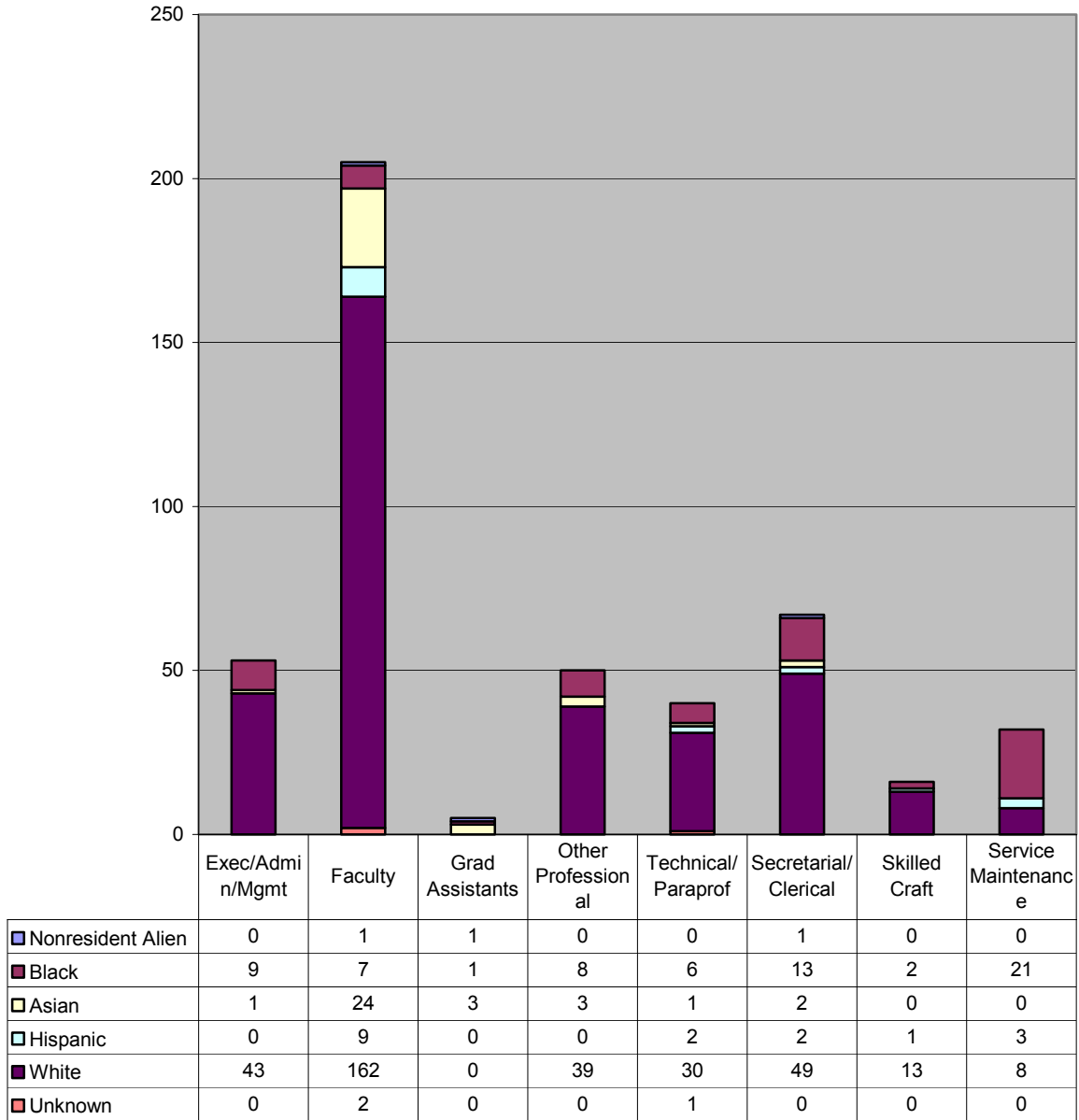


	Fall 1995	Fall 1997	Fall 1999	Fall 2001	Fall 2002
Exec/Admin/Managerial	9.8%	9.4%	9.2%	11.0%	10.6%
Faculty	41.6%	42.0%	44.7%	45.2%	42.4%
Grad Assistants	4.4%	4.9%	5.7%	1.0%	10.3%
Other Professional	5.6%	8.8%	7.9%	10.4%	8.3%
Technical/Paraprof	6.0%	6.1%	6.4%	8.3%	9.0%
Clerical/Secretarial	17.7%	16.3%	15.2%	14.0%	10.3%
Skilled Crafts	3.1%	2.9%	2.6%	3.3%	3.5%
Service/Maintenance	11.9%	9.4%	8.4%	6.7%	5.7%

From Fall 95 to Fall 02, the Technical & Paraprofessional category grew the most (69%).

Other than Grad Assistants, the Service/Maintenance category declined the most (46%).

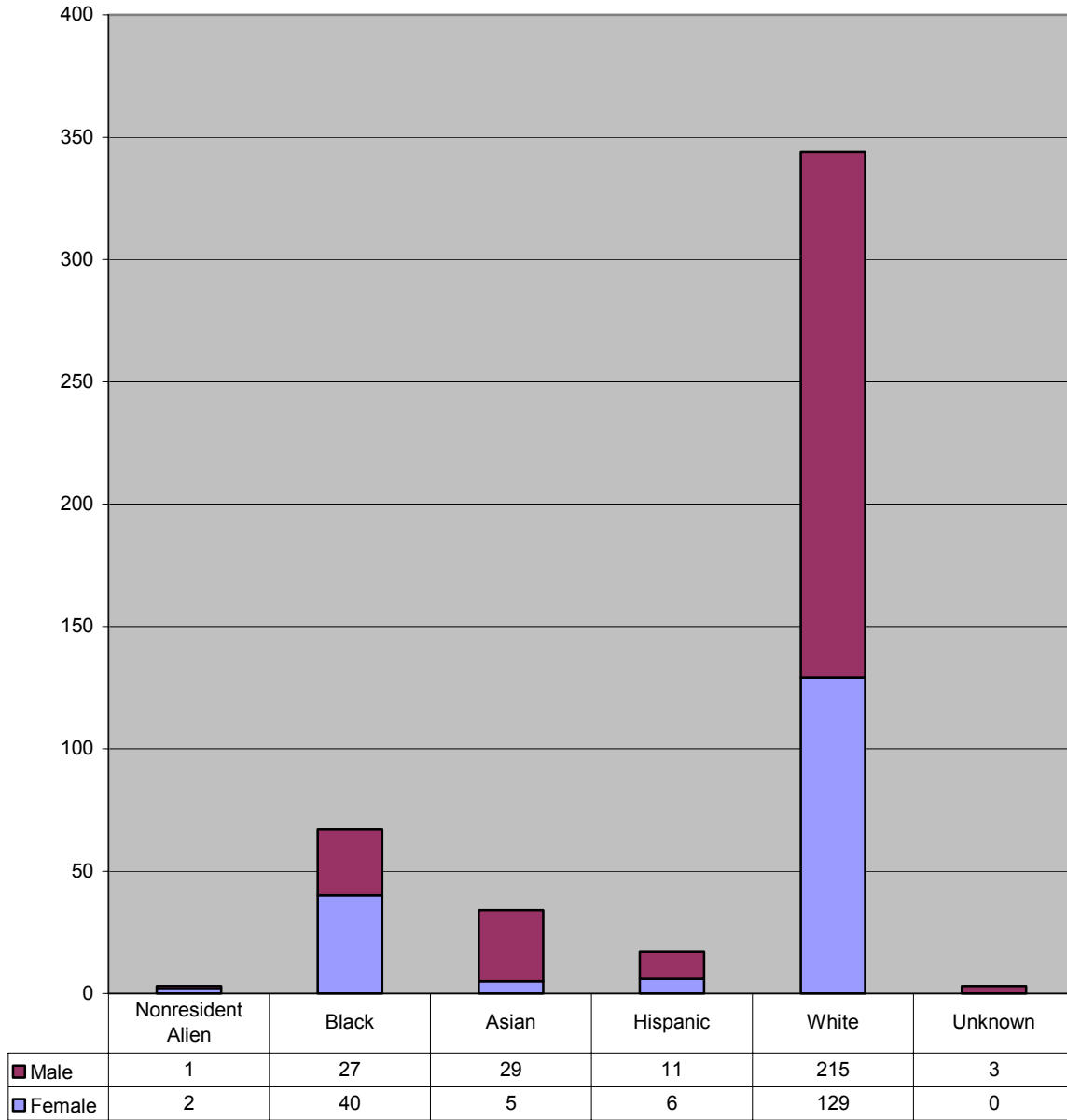
### Employees by Ethnicity and EEO Category Fall 01



Faculty have the greatest percentage of whites and Service/Maintenance has the smallest percentage of whites.

Source: IPEDS Fall Staff Survey (collected biannually)

### Employees by Ethnicity and Gender Fall 01



 Blacks have the largest portion of female employees (60%).

Source: IPEDS Fall Staff Survey (collected biannually)