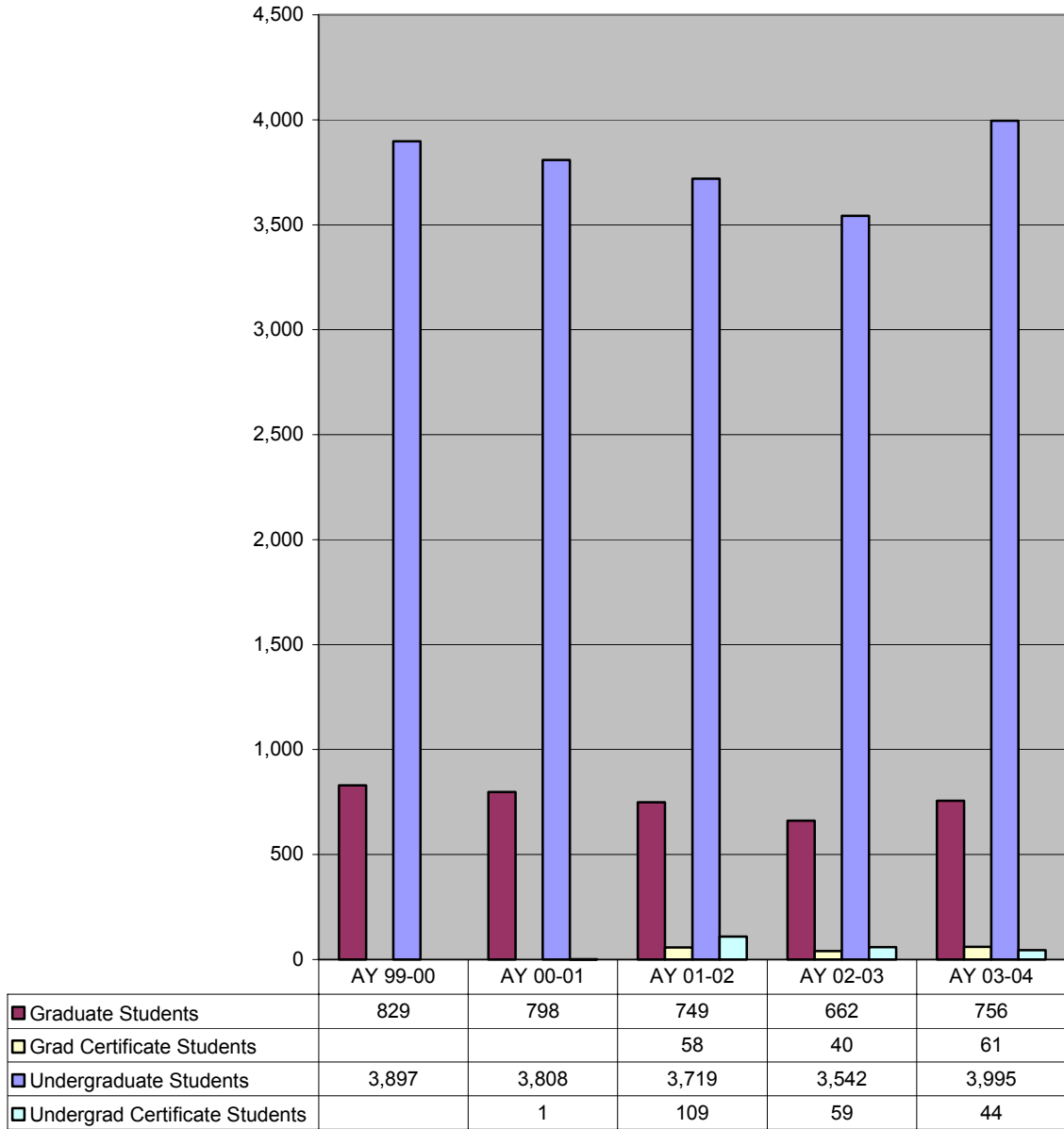
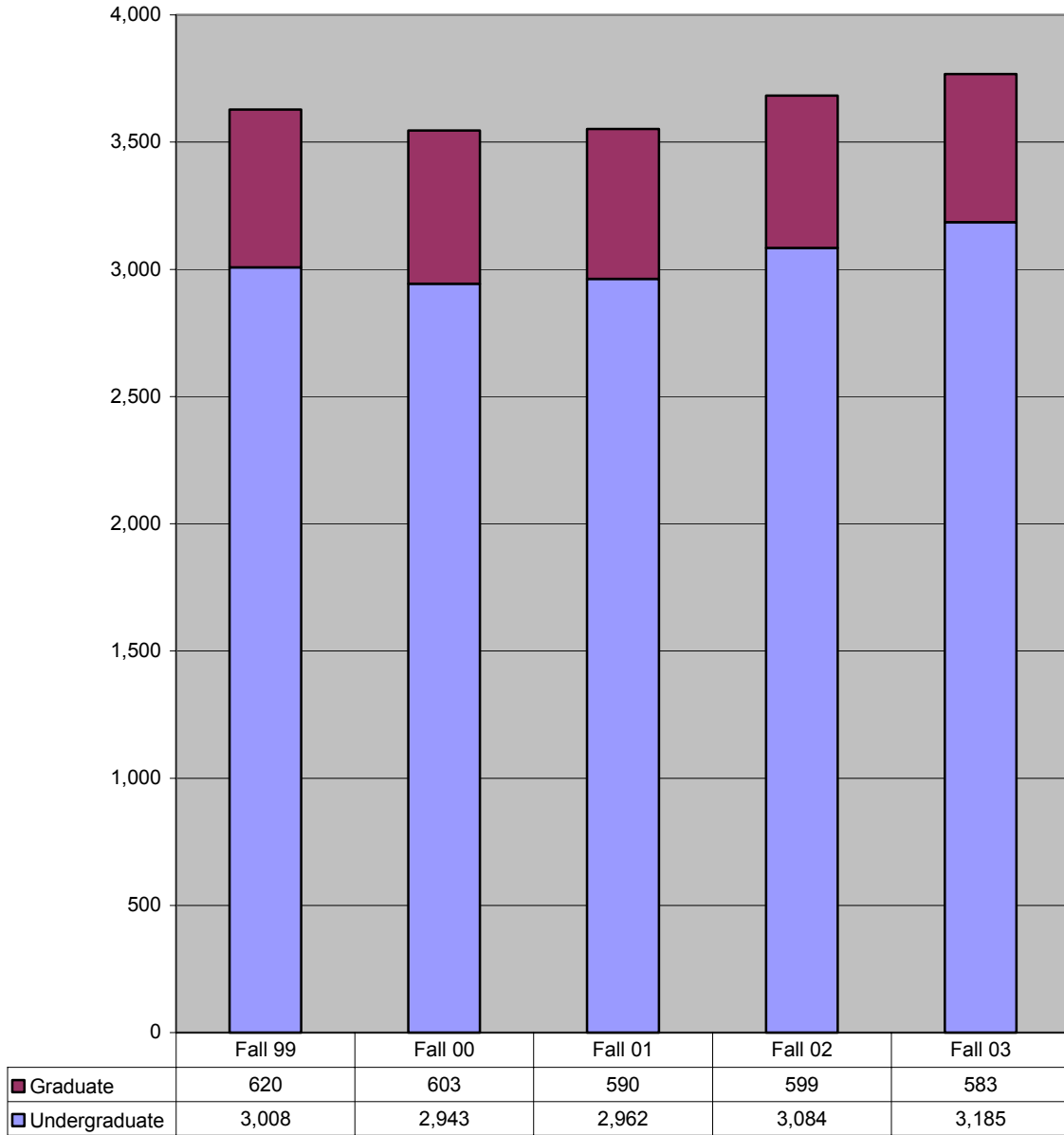



Unduplicated Headcount by Student Level AY 99-03



 **The total number of students (unduplicated) attending SPSU during one academic year has decreased by 3% since the 99-00 academic year.**

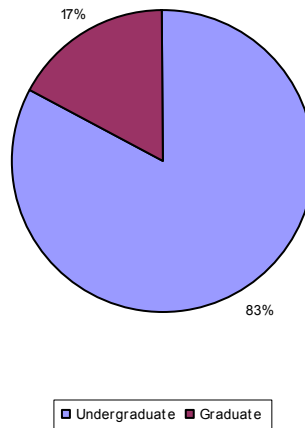
Headcount Enrollment by Student Level Fall 99-03



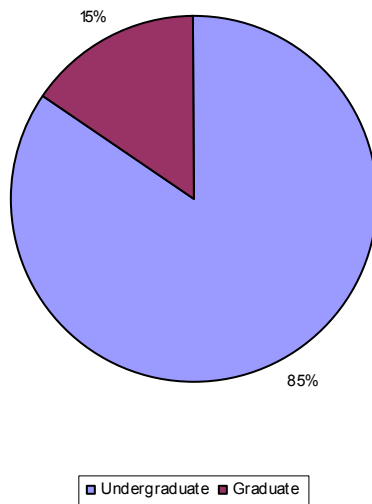
 The number of undergraduates has increased by 6% and the number of graduates has decreased by 6% from Fall 99 to Fall 03.

Source: IPEDS Fall Enrollment Survey

Headcount Enrollment by Student Level Fall 99

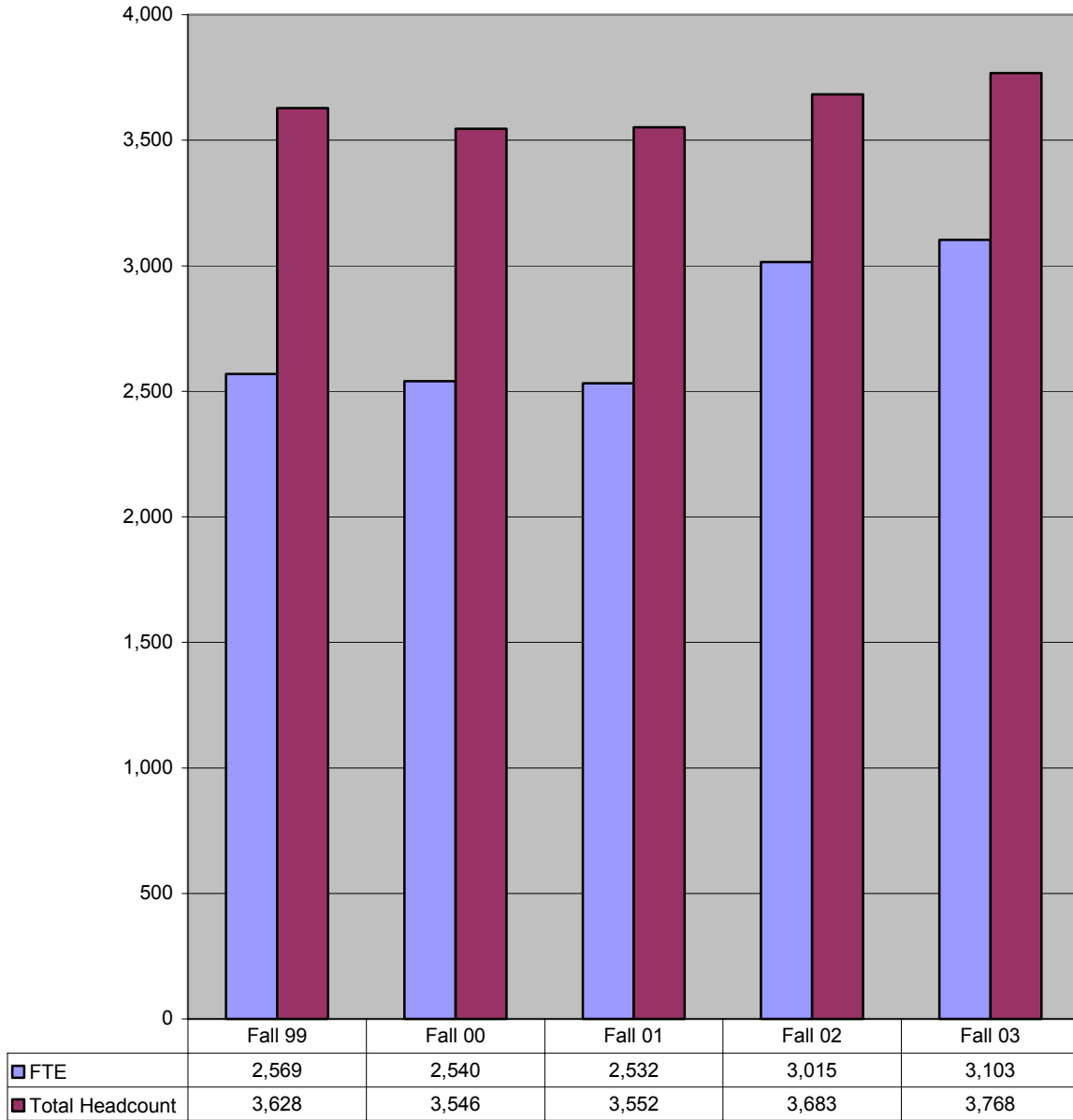


Headcount Enrollment by Student Level Fall 03



 The portion of graduate students decreased by 2 percentage points during the past five years.

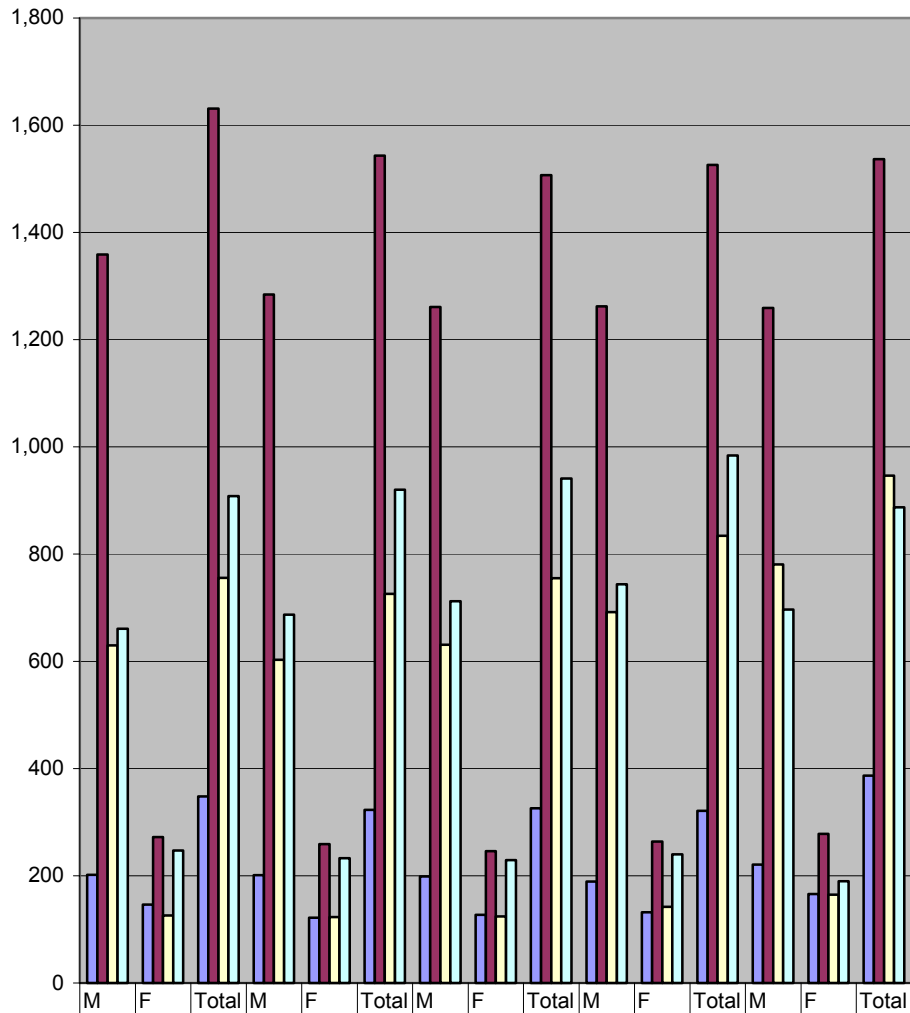
Headcount and FTE* Enrollment Fall 99-03



 FTE increased at a 17% faster rate than headcount from Fall 99 to Fall 03.

Source: IPEDS Fall Enrollment Survey and USG SIRS Fall Enrollment Report

Enrollment by School by Gender Fall 99-03



	Fall 99			Fall 00			Fall 01			Fall 02			Fall 03		
	M	F	Total	M	F	Total	M	F	Total	M	F	Total	M	F	Total
■ School of Arts & Sci	202	146	348	201	122	323	199	127	326	189	132	321	221	166	387
■ School of Eng Tech & Mgt	1,359	272	1,631	1,284	259	1,543	1,261	246	1,507	1,262	264	1,526	1,259	278	1,537
■ School of Arch, CET & Const	630	126	756	603	123	726	631	124	755	692	142	834	781	165	946
■ School of Comp & SE	661	247	908	687	233	920	712	229	941	744	240	984	697	190	887

The School of Arch, CET & Const has grown by 25% over the past five years.

The School of Comp & SE lost 57 females and the School of Eng Tech & Mgt lost 100 males over the past five years.

Source: USG SIRS Fall Enrollment Report

Enrollment by Major and Gender Fall 99-03

	Fall 99			Fall 00			Fall 01			Fall 02			Fall 03		
	M	F	Total	M	F	Total	M	F	Total	M	F	Total	M	F	Total
Certificate	16	9	25	58	28	86	70	22	92	69	17	86	40	15	55
Apparel Product Development							0	1	1						
Computer Programming	8	2	10	21	15	36	18	8	26	5	2	7	3	1	4
Computer Science (Post Bacc.)				16	5	21	21	8	29	16	4	20	13	2	15
Information Technology (Post Bacc.)										1	0	1			
Land Development										1	1	2	0	2	2
Land Surveying							4	0	4	11	0	11	10	0	10
Pre-Software Systems Development	1	0	1	1	0	1				0	1	1			
Project Management							3	2	5	4	2	6	3	6	9
Quality Assurance (Post Bacc.)	0	1	1				2	0	2	1	0	1	1	1	2
Software Engineering (Post Bacc.)	7	6	13	5	3	8	4	1	5	8	1	9	3	0	3
Software Systems Development				15	5	20	18	2	20	19	6	25			
Specialty Construction										3	0	3	5	1	6
Systems Engineering (Post Bacc.)													2	2	4


Enrollment by Major and Gender
(continued)


	Fall 99			Fall 00			Fall 01			Fall 02			Fall 03		
	M	F	Total	M	F	Total	M	F	Total	M	F	Total	M	F	Total
Undergraduate	2,514	511	3,025	2,421	479	2,900	2,435	476	2,911	2,511	521	3,032	2,601	572	3,173
Apparel Engineering Technology	0	2	2	0	1	1	0	1	1	0	1	1	0	2	2
Apparel/Textile Engineering Tech.	41	31	72	40	27	67	37	24	61	29	27	56	20	34	54
Applied Science	2	0	2				1	0	1				1	1	2
Architecture	32	7	39	47	16	63	33	12	45	21	10	31	17	4	21
Biology										3	4	7	18	20	38
Civil Engineering Technology	244	47	291	200	40	240	222	35	257	216	30	246	225	30	255
Computer Engineering Technology	230	32	262	233	31	264	262	28	290	232	28	260	181	20	201
Computer Science	481	108	589	478	91	569	471	77	548	430	73	503	353	50	403
Construction	173	13	186	176	10	186	170	14	184	182	18	200	206	15	221
Electrical Engineering Technology	343	32	375	311	31	342	288	28	316	311	28	339	311	27	338
Environmental Development	4	0	4	3	0	3									
General Studies/Undeclared	115	34	149	127	24	151	118	33	151	114	40	154	117	60	177
Industrial Distribution	15	2	17	10	3	13	8	4	12	5	2	7	0	1	1
Industrial Engineering Technology	123	41	164	129	47	176	96	36	132	96	35	131	97	31	128
Information Technology							18	4	22	69	18	87	116	26	142
International Studies/Global Tech.										1	1	2	8	6	14
International Technical Communica.							2	2	4	2	1	3	1	4	5
Management	105	58	163	100	55	155	114	48	162	111	57	168	129	65	194
Manufacturing	1	0	1												
Mathematics	20	6	26	23	6	29	17	7	24	17	12	29	23	15	38
Mechanical Engineering Tech.	350	16	366	315	13	328	280	15	295	301	13	314	335	14	349
Physics	18	0	18	18	3	21	15	6	21	15	6	21	21	6	27
Pre-Architecture	123	49	172	120	52	172	147	55	202	207	74	281	260	99	359
Software Engineering							9	2	11	24	6	30	54	9	63
Surveying and Mapping	23	3	26	29	1	30	31	3	34	31	3	34	31	4	35
Technical and Professional Comm.	28	26	54	17	24	41	25	30	55	26	25	51	20	20	40
Telecommunications Engineering T.	41	3	44	44	3	47	70	12	82	67	9	76	56	9	65
Textile Engineering Technology	2	1	3	1	1	2	1	0	1	1	0	1	1	0	1

Enrollment by Major and Gender
(continued)

	Fall 99			Fall 00			Fall 01			Fall 02			Fall 03		
	M	F	Total	M	F	Total	M	F	Total	M	F	Total	M	F	Total
Graduate	322	271	593	296	230	526	298	228	526	307	240	547	317	212	529
Computer Science	140	113	253	118	91	209	92	86	178	99	72	171	78	52	130
Construction	31	7	38	28	4	32	24	5	29	20	6	26	27	10	37
Engineering Technology-Elect	16	1	17	14	1	15	21	3	24	32	8	40	34	8	42
Information Technology				9	10	19	35	31	66	43	49	92	41	41	82
MBA										9	8	17	40	20	60
Management	38	31	69	28	25	53	18	21	39	15	21	36	4	14	18
Quality Assurance	52	21	73	59	21	80	60	23	83	48	25	73	46	25	71
Software Engineering	24	18	42	24	13	37	26	10	36	30	8	38	34	6	40
Systems Engineering													0	1	1
Technical and Professional Comm.	21	80	101	16	65	81	22	49	71	11	43	54	13	35	48
School of Arts & Sci	202	146	348	201	122	323	199	127	326	189	132	321	221	166	387
School of Tech & Mgmt	1,359	272	1,631	1,284	259	1,543	1,261	246	1,507	1,262	264	1,526	1,259	278	1,537
School of Arch, CET & Const	630	126	756	603	123	726	631	124	755	692	142	834	781	165	946
School of Comp & SE	661	247	908	687	233	920	712	229	941	744	240	984	697	190	887
Total	2,852	791	3,643	2,775	737	3,512	2,803	726	3,529	2,887	778	3,665	2,958	799	3,757

 **Of the 8 undergraduate programs that grew over the past five years, the 3 that grew the most were: Architecture, Physics, and Telecommunications Engineering Technology.**

 **The only graduate program that grew over the past five years was Engineering Technology.**

 **Over the past five years, the number of undergraduate females grew at least 25% in Architecture, General Studies, Mathematics, Surveying & Mapping, and Telecommunications ET.**

 **Over the past five years, the number of graduate females grew at least 25% in Construction and Engineering Technology**

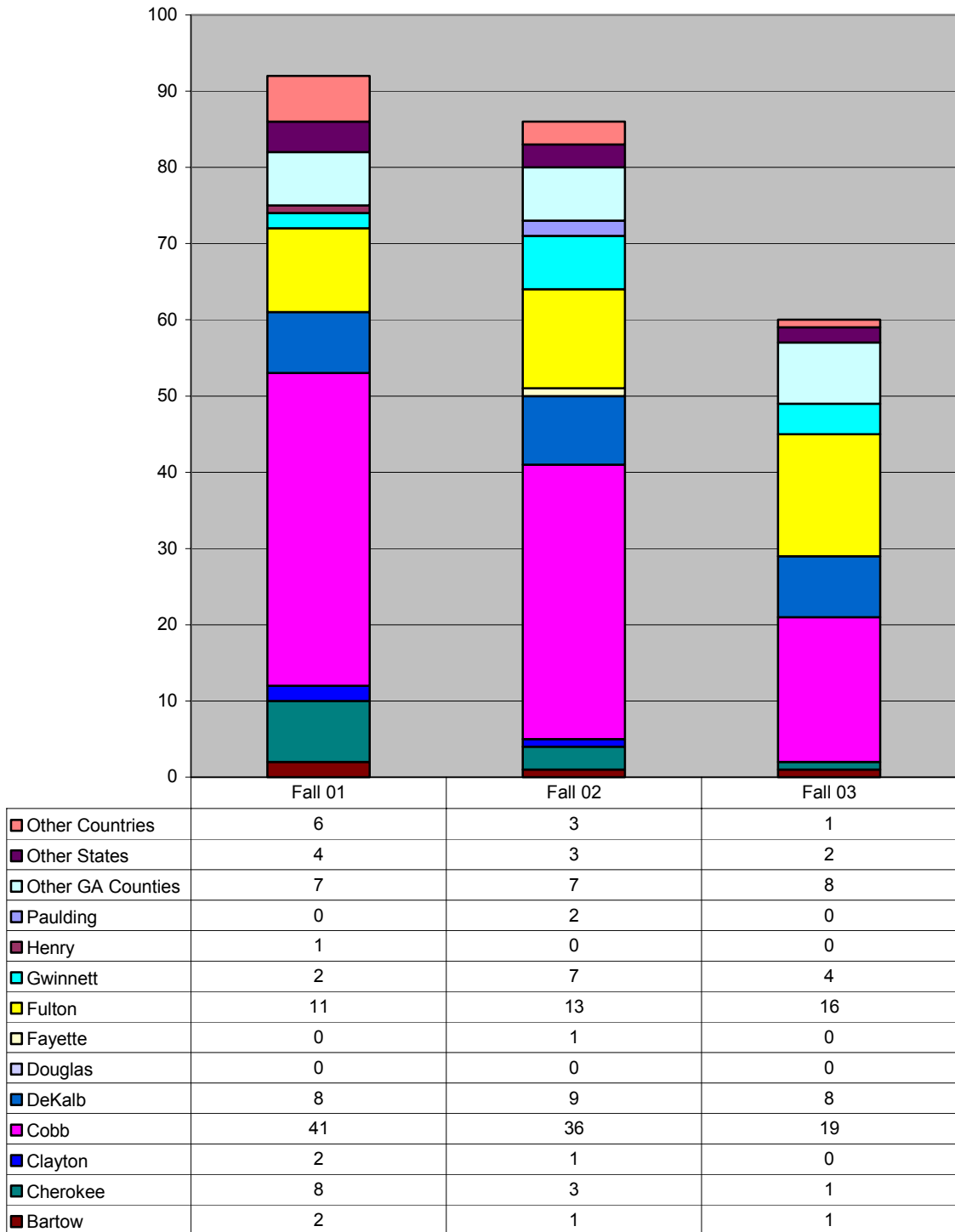
Source: SPSU Banner Report WSFR 0215

SPSU Students from Georgia Counties

Fall 03

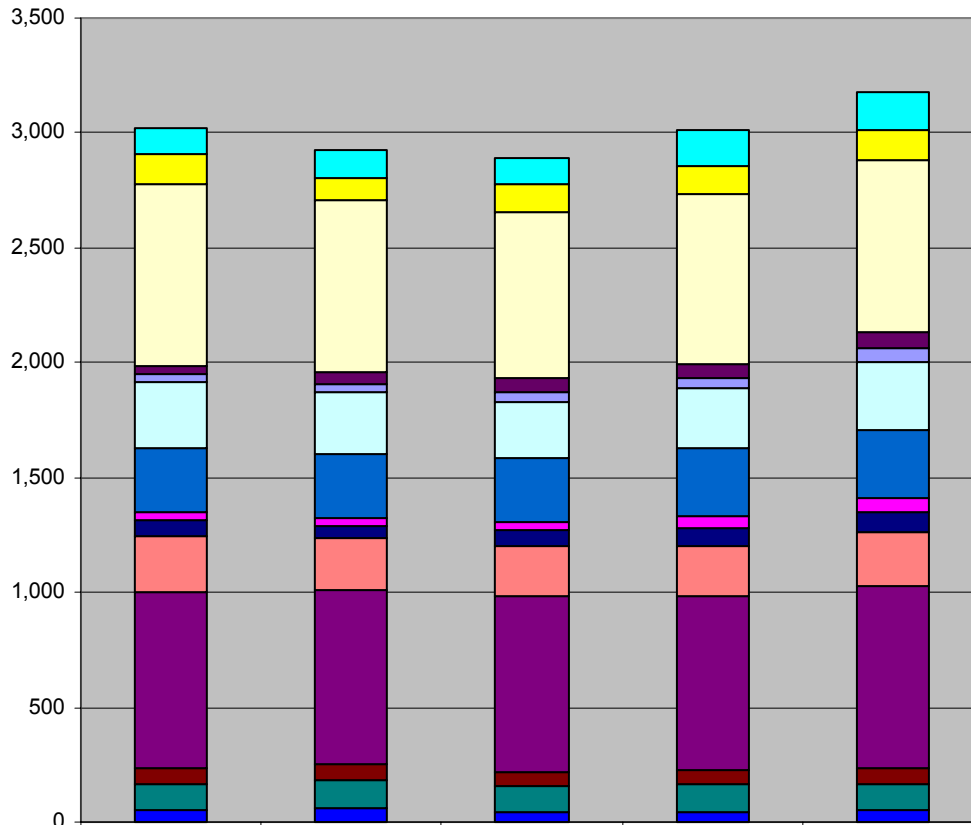


Certificate Enrollment by Place of Origin Fall 01-03



Over the past three years, the number of certificate students from Cobb County decreased by 54%.

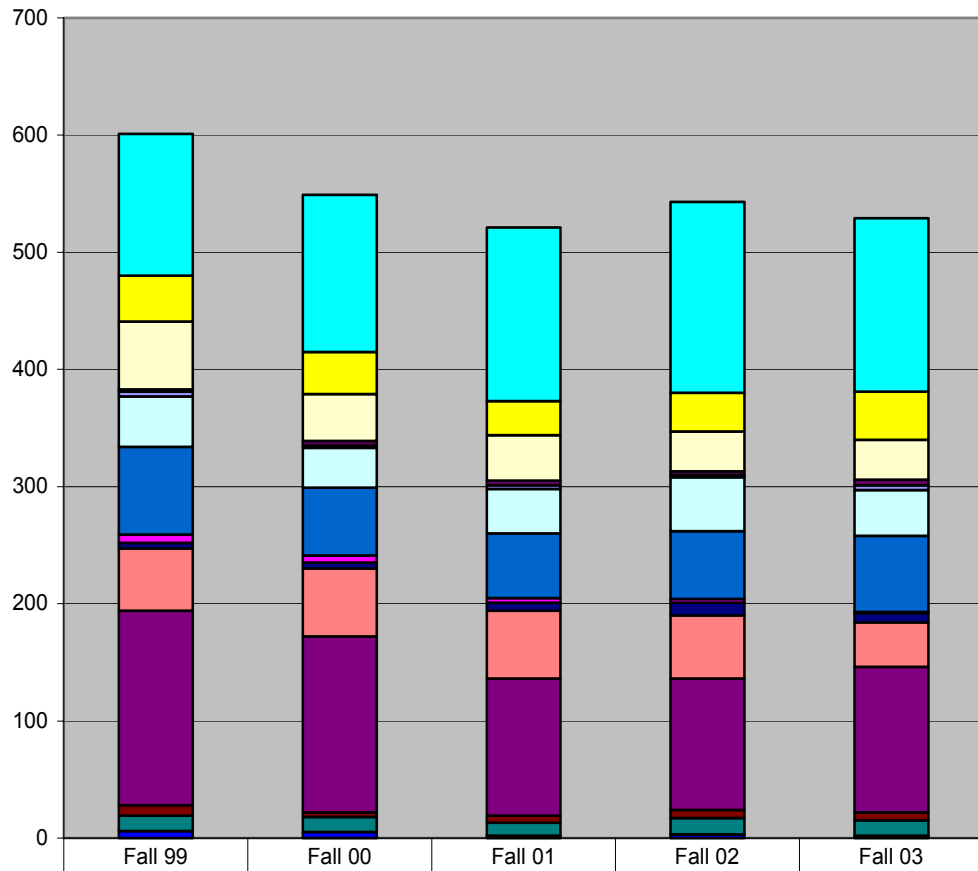
Undergraduate Enrollment by Place of Origin Fall 99-03



	Fall 99	Fall 00	Fall 01	Fall 02	Fall 03
Other Countries	115	121	109	161	164
Other States	130	89	122	121	131
Other GA Counties	794	752	726	740	743
Paulding	38	56	54	60	71
Henry	32	36	44	47	59
Gwinnett	286	268	251	260	300
Fulton	277	276	276	294	295
Fayette	40	34	38	53	65
Douglas	65	56	63	77	81
DeKalb	242	225	220	219	240
Cobb	772	755	770	752	794
Clayton	69	72	61	67	66
Cherokee	109	119	106	123	117
Bartow	54	63	47	40	48

Over the past five years, the number of undergraduate students from Cobb County increased by 3%.

Graduate Enrollment by Place of Origin Fall 99-03

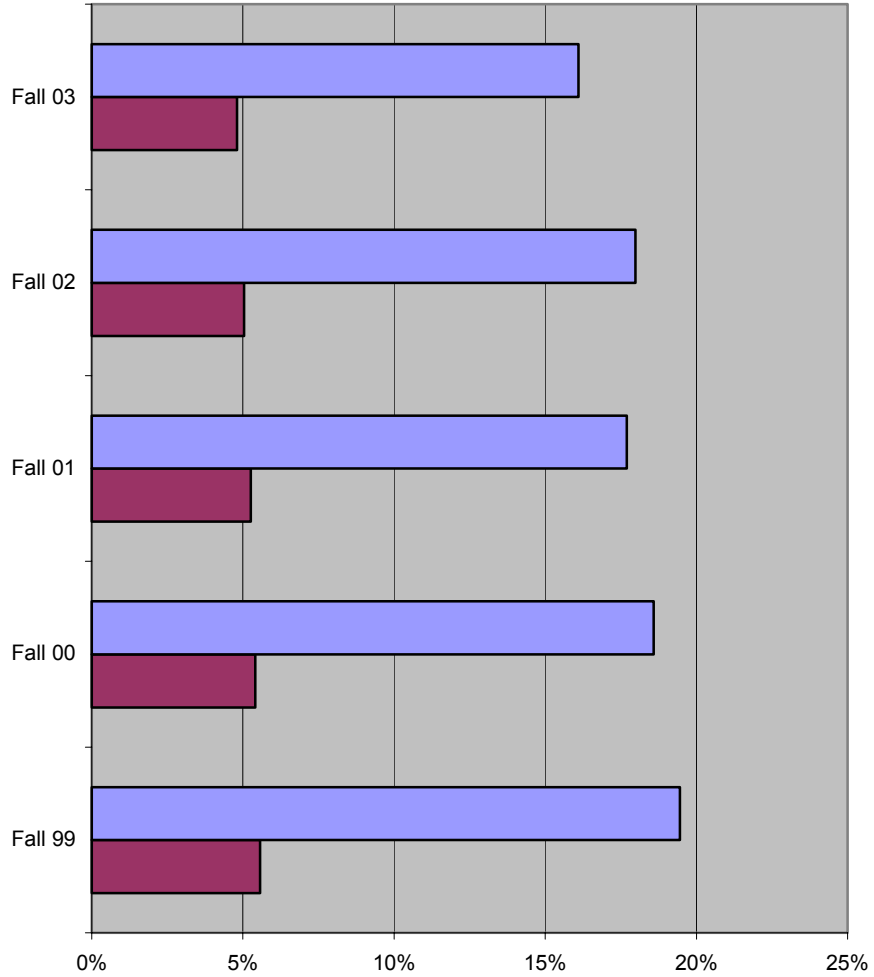


	Fall 99	Fall 00	Fall 01	Fall 02	Fall 03
Other Countries	121	134	148	163	148
Other States	39	36	29	33	41
Other GA Counties	58	40	39	34	34
Paulding	2	4	4	3	5
Henry	4	2	3	2	4
Gwinnett	43	34	38	46	39
Fulton	75	58	55	58	65
Fayette	7	6	4	3	1
Douglas	5	5	7	11	8
DeKalb	53	58	58	54	38
Cobb	166	150	117	112	124
Clayton	9	4	6	7	7
Cherokee	13	13	11	14	13
Bartow	6	5	2	3	2

Over the past five years, the number of graduate students from Cobb County decreased by 25%.

Source: SPSU Banner

**SPSU's Contribution of International Students to USG State Universities
Fall 99-03**



	Fall 99	Fall 00	Fall 01	Fall 02	Fall 03
■ % SPSU to USG State Univ Aliens	19.5%	18.6%	17.7%	18.0%	16.1%
■ % SPSU to USG State Univ Total Students	5.6%	5.4%	5.3%	5.0%	4.8%

 Although SPSU contributed 5% of the total enrollment of the USG State Universities in Fall 03, it contributed 16% of the international students.

**Countries Contributing Largest Number of Students (5 or more)
Fall 2003**

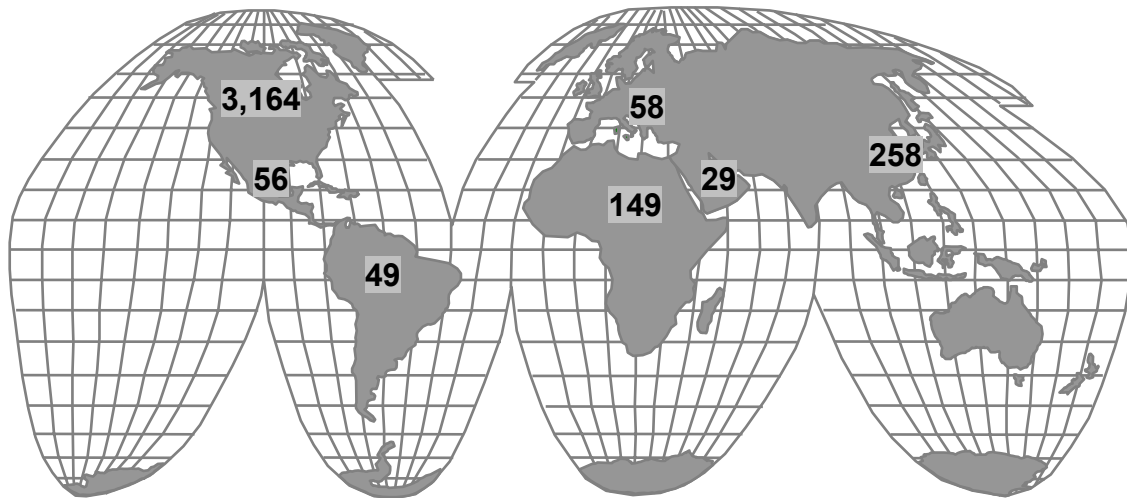
Country	Most Undergraduate Students	Country	Most Graduate Students
India	32	India	92
Kenya	21	China	27
Nigeria	21	Turkey	14
Colombia	19	Thailand	11
Jamaica	18	Ethiopia	7
Vietnam	15	Nigeria	6
Ethiopia	13	Pakistan	6
Canada	12	Colombia	5
Cameroon	11	Ghana	5
Pakistan	11		
Mexico	10		
China	9		
Venezuela	8		
Japan	7		
Iran	7		
Brazil	7		
Gambia	6		
Korea, South	6		
Nepal	6		
Bosnia and Herzegovina	6		
Lebanon	6		
Ghana	5		
Ivory Coast	5		
Morocco	5		
Russia	5		

 India continues to provide the most undergraduate and graduate students of any foreign country.


 From Fall 02 to Fall 03, the number of graduate students from China declined by 45%.

Source: SPSU Banner

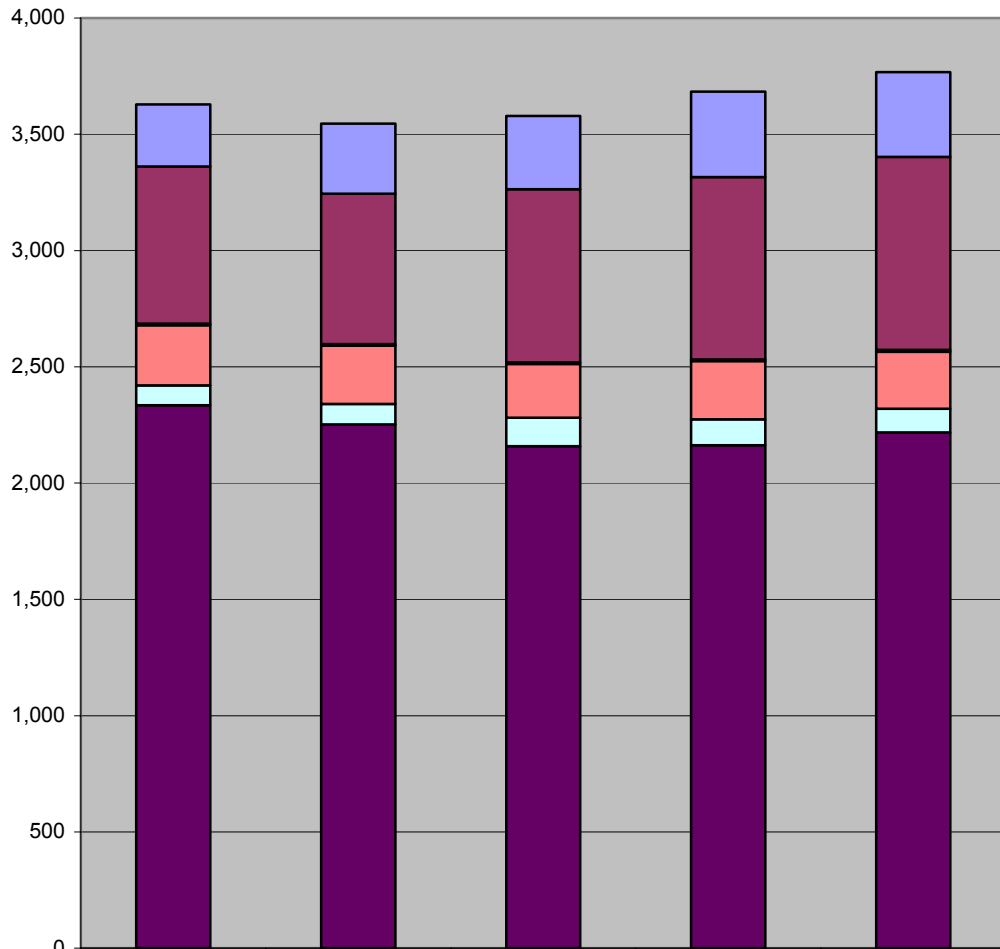
Students Contributed by World Region Fall 2003



Region	Certificate	Undergrads	Grads	Total
Africa	2	116	31	149
Asia	2	105	151	258
Central America/Caribbean	0	46	10	56
Europe/Former Soviet Union	0	37	21	58
Middle East	1	21	7	29
US/Canada	53	2,808	303	3,164
South America	1	41	7	49
Total	59	3,174	530	3,763

 From Fall 02 to Fall 03, while the number of students from the Western Hemisphere increased by 4%, the number of students from the Eastern Hemisphere decreased by 7%.

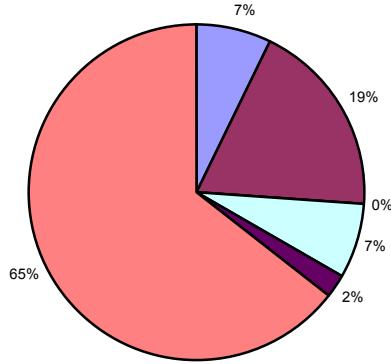
Headcount Enrollment by Race Fall 99-03



	Fall 99	Fall 00	Fall 01	Fall 02	Fall 03
Non-Resident Alien	267	302	316	367	366
Black	676	647	744	784	829
American Indian	6	7	7	8	8
Asian	259	250	231	250	245
Hispanic	85	88	123	112	102
White	2,335	2,252	2,158	2,162	2,218

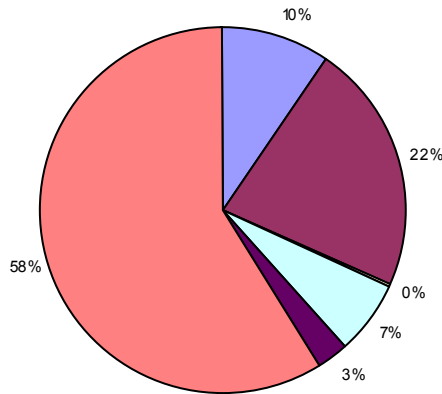
 From Fall 02 to Fall 03, all ethnic groups increased except Asian and Hispanic.

Headcount Enrollment by Race Fall 99



■ Non-Resident Alien ■ Black □ American Indian □ Asian ■ Hispanic ■ White

Headcount Enrollment by Race Fall 03

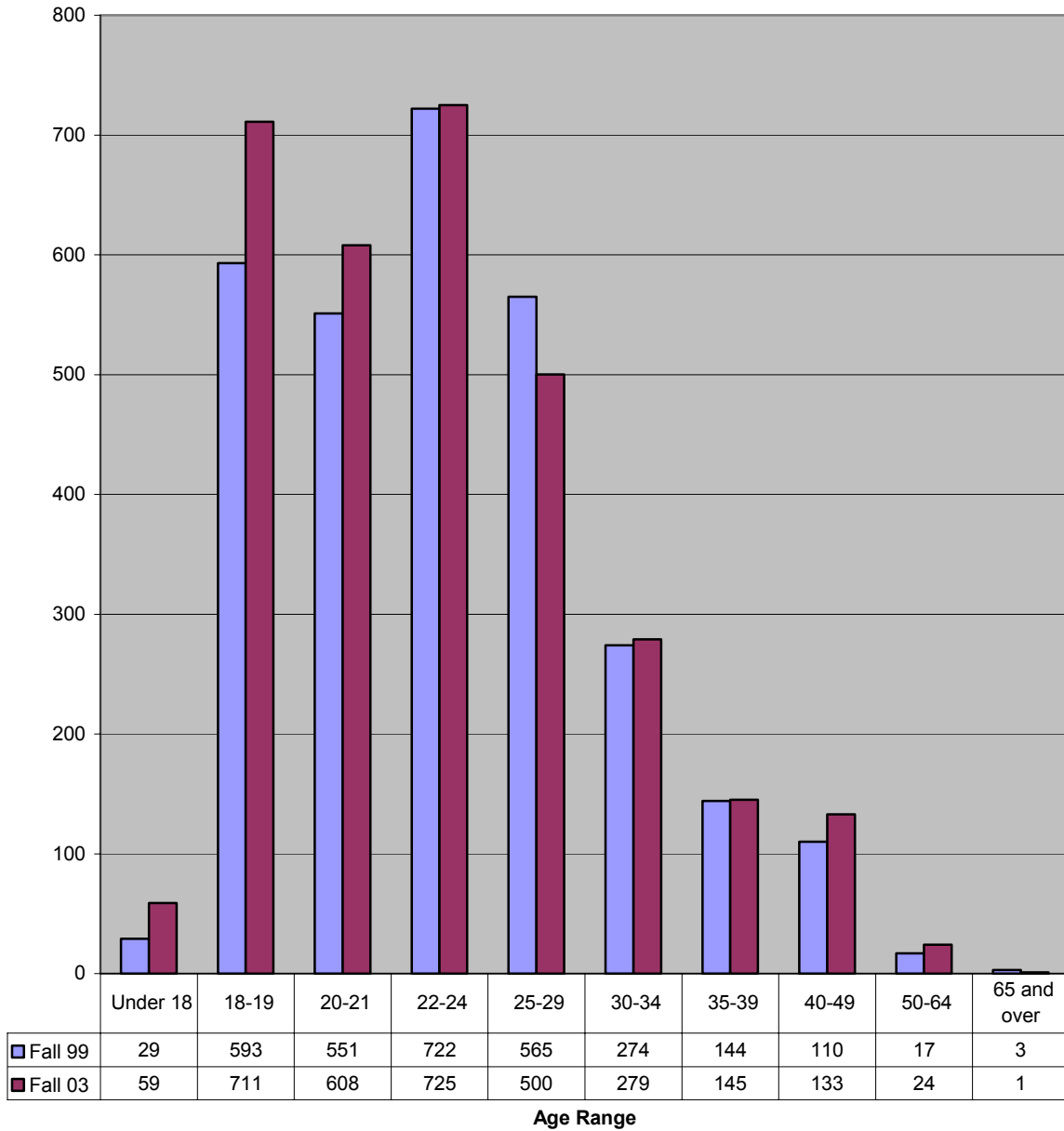



■ Non-Resident Alien ■ Black □ American Indian □ Asian ■ Hispanic ■ White



In the past five years, the proportion of Blacks and Non Resident Aliens both increased by 3 percentage points. (Note that Resident Aliens are included in each category.)

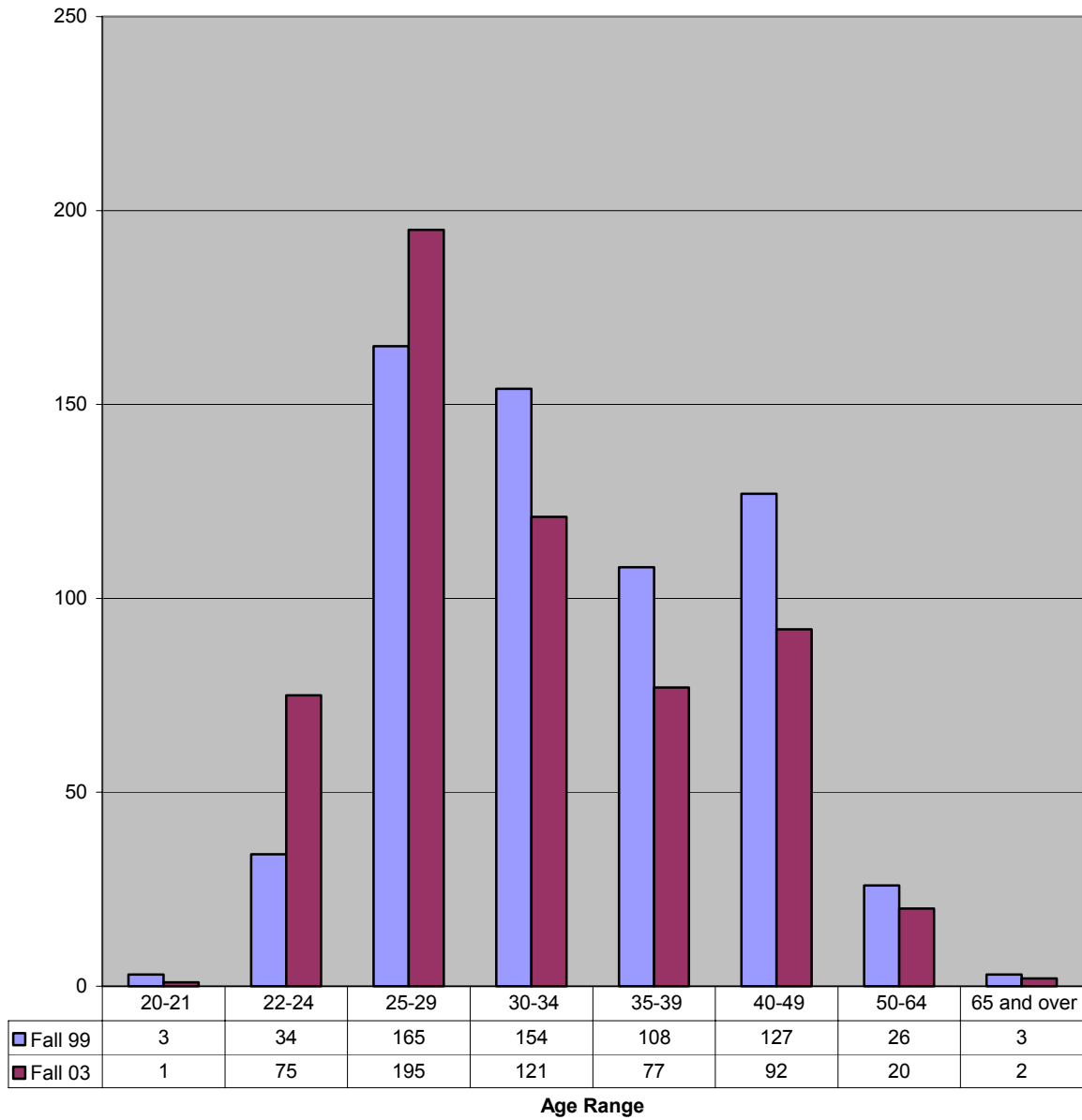
Distribution of Undergraduate Students by Age Fall 99 vs Fall 03




 The number of undergraduate students under 25 years has increased by 11% over the past five years.

 The number of undergraduate students 25 years and older has decreased by 3% over the past five years.

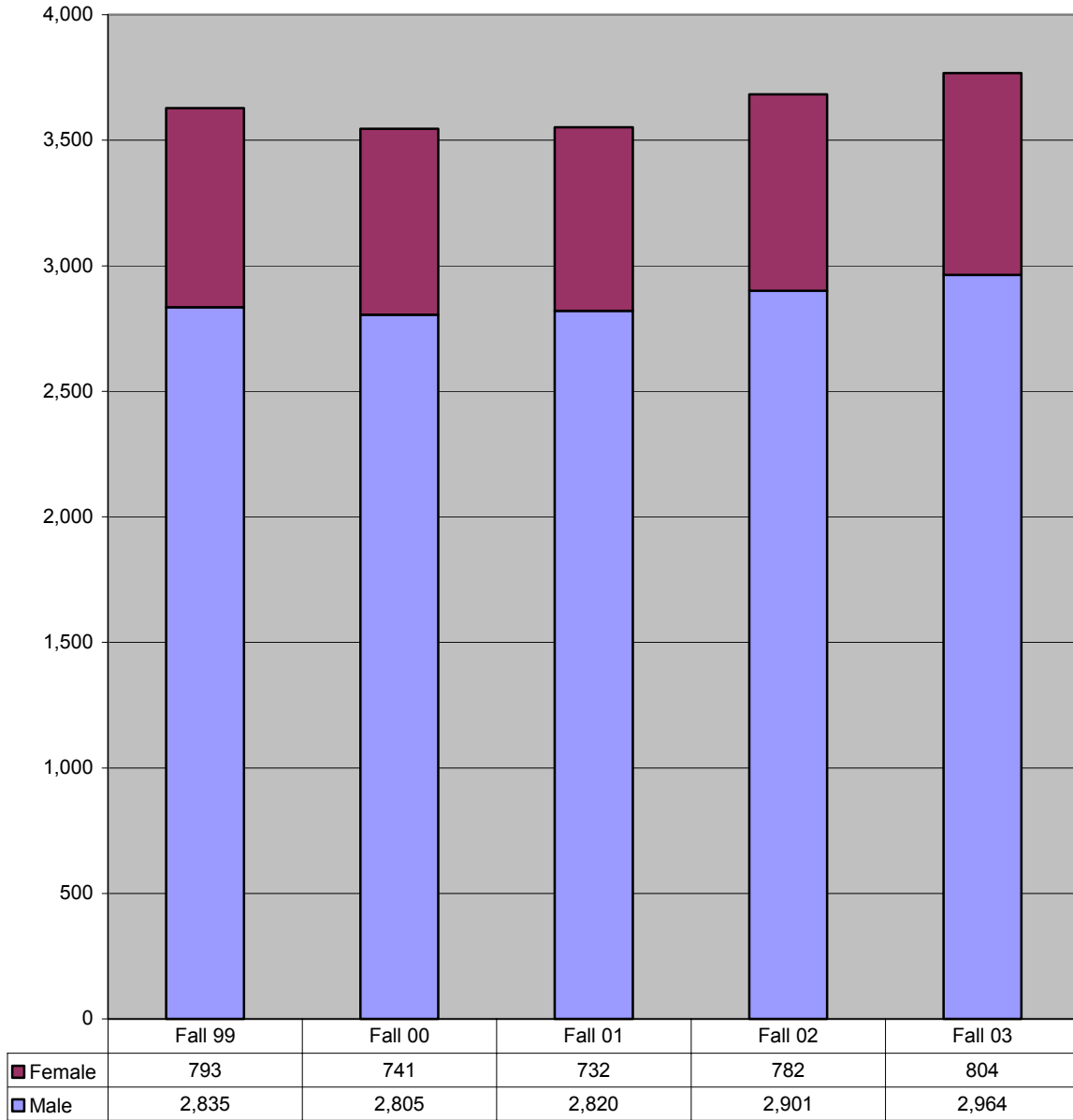
Distribution of Graduate Students by Age Fall 99 vs Fall 03




 The number of grad students under 25 years has increased by 105% over the past five years.

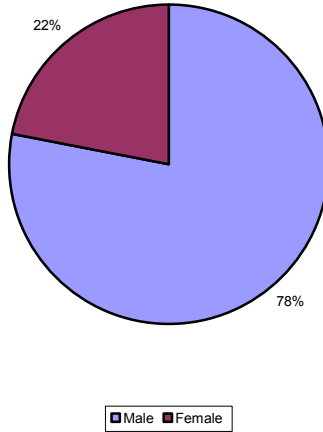
 The number of grad students 25 years and older has decreased by 13% over the past five years.

Headcount Enrollment by Gender Fall 99-03

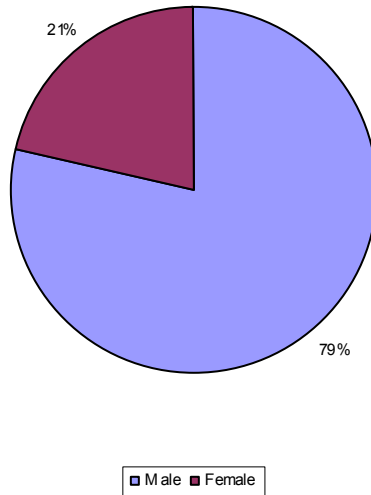


 Female enrollment increased by 1% and male enrollment increased by 5% over the past five years.

Headcount Enrollment by Gender Fall 99

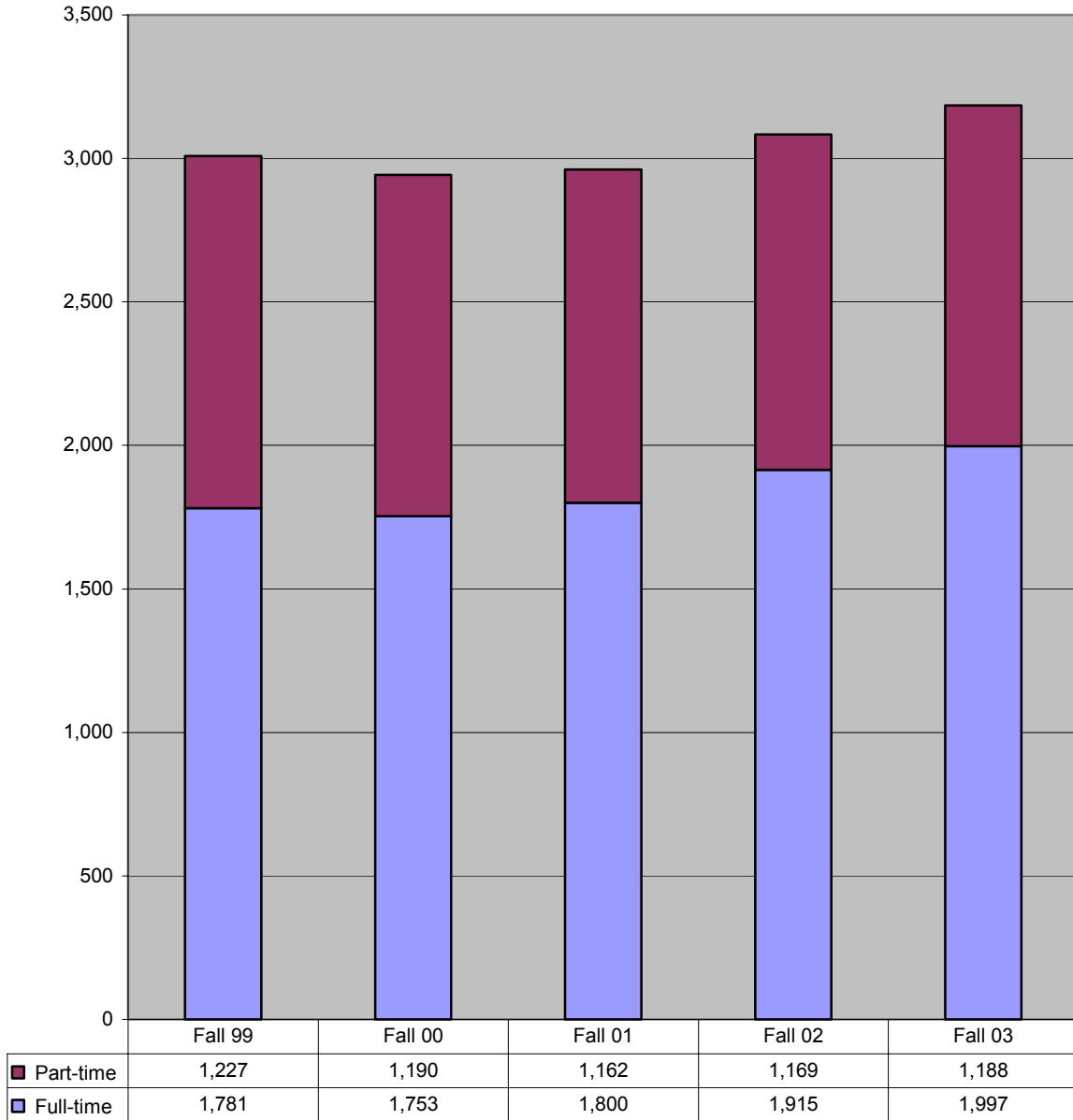


Headcount Enrollment by Gender Fall 03



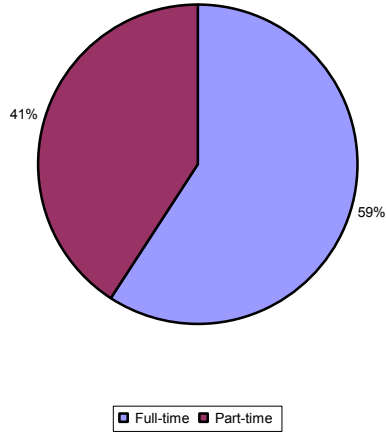
 The proportion of females has declined by one percentage point over the last five years.

Undergraduate Headcount Enrollment by Status Fall 99-03

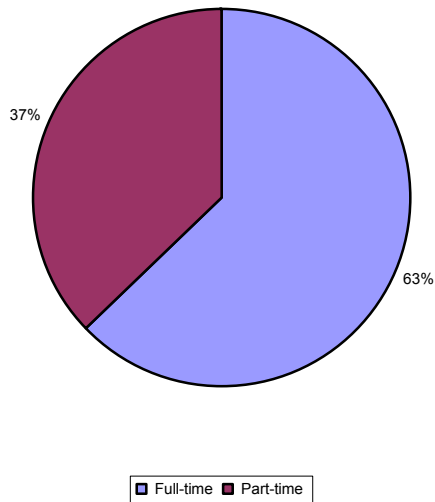


 **Over the past five years, full-time undergraduate enrollment grew by 12% while part-time undergraduate enrollment declined by 3%.**

Undergraduate Headcount Enrollment by Status Fall 99

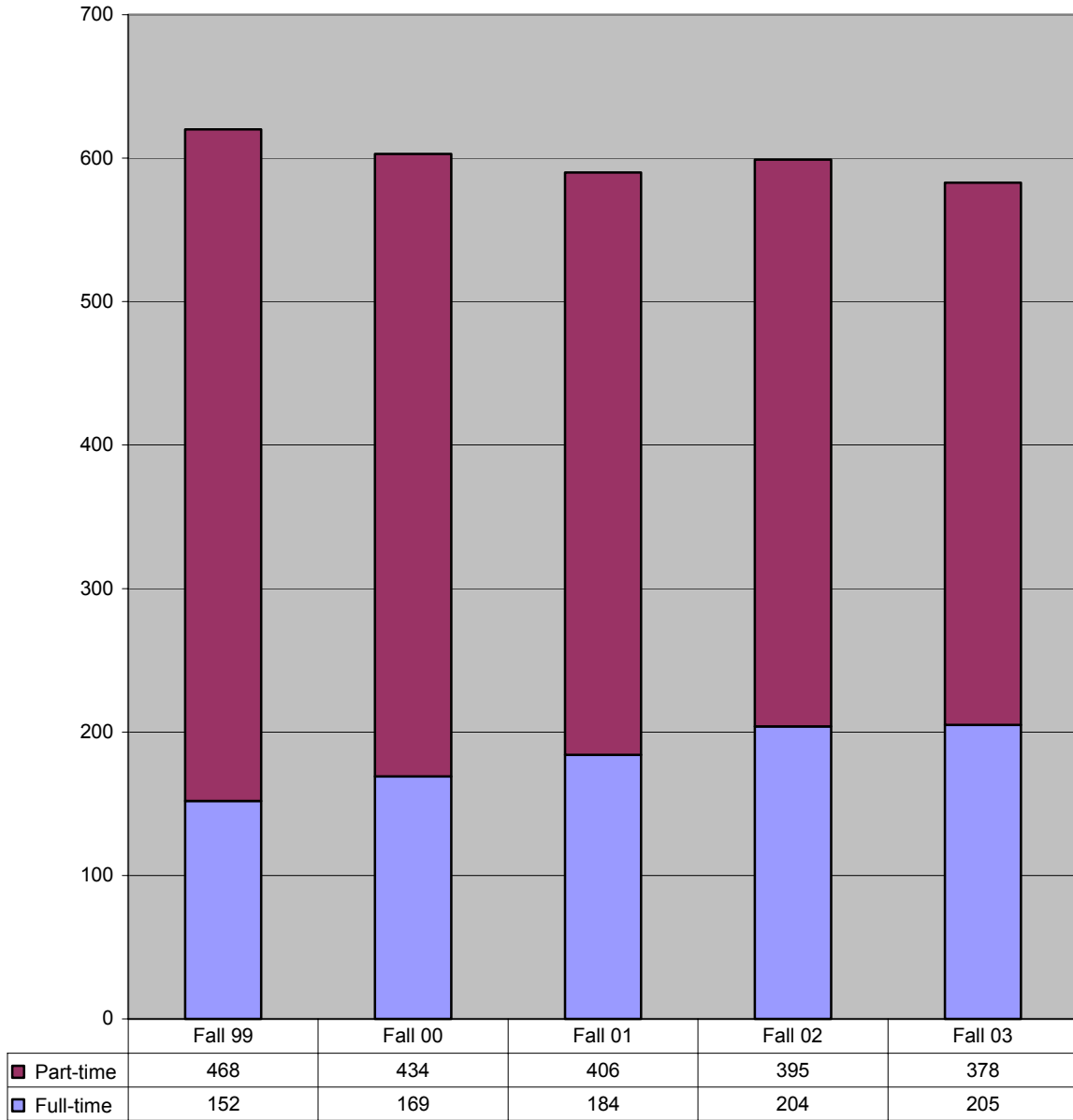



Undergraduate Headcount Enrollment by Status Fall 03



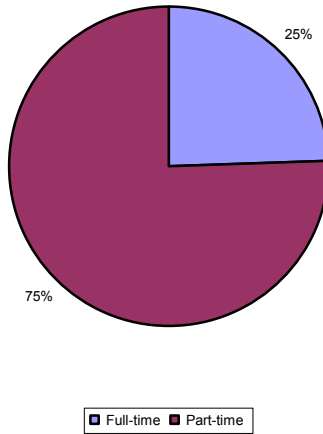
Over the past five years, the proportion of full-time undergraduate students grew by 4 percentage points.

Graduate Headcount Enrollment by Status Fall 99-03

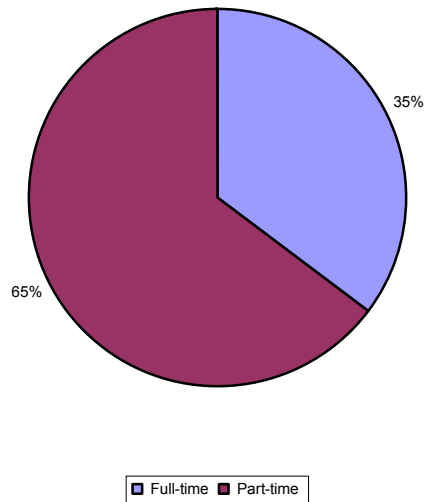


 **Over the past five years, full-time graduate enrollment grew by 35% while part-time graduate enrollment declined by 19%.**

Graduate Headcount Enrollment by Status Fall 99

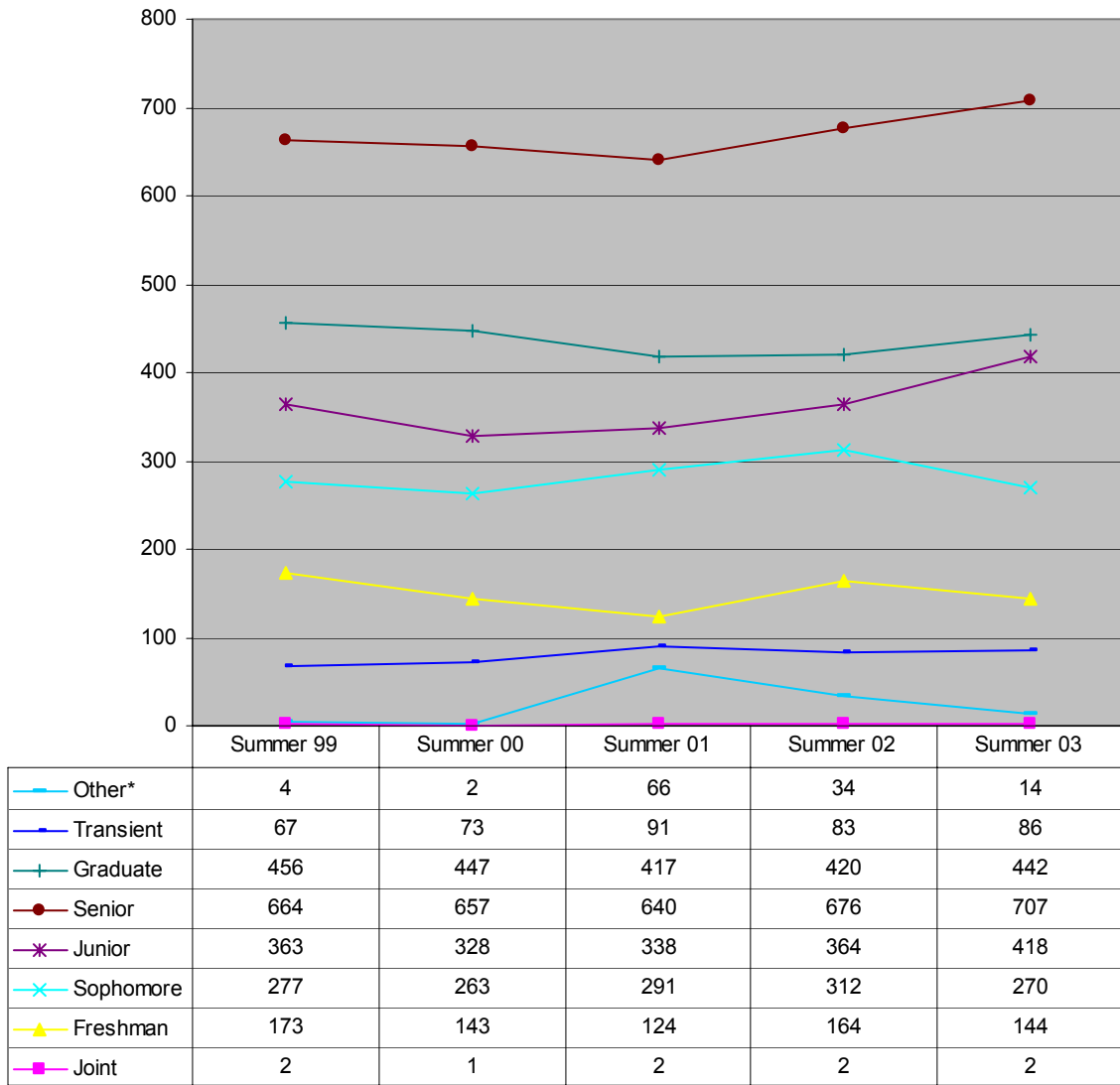


Graduate Headcount Enrollment by Status Fall 03




Over the past five years, the proportion of part-time graduate students declined by 10 percentage points.

Total Enrollment by Student Type Summer 99-03

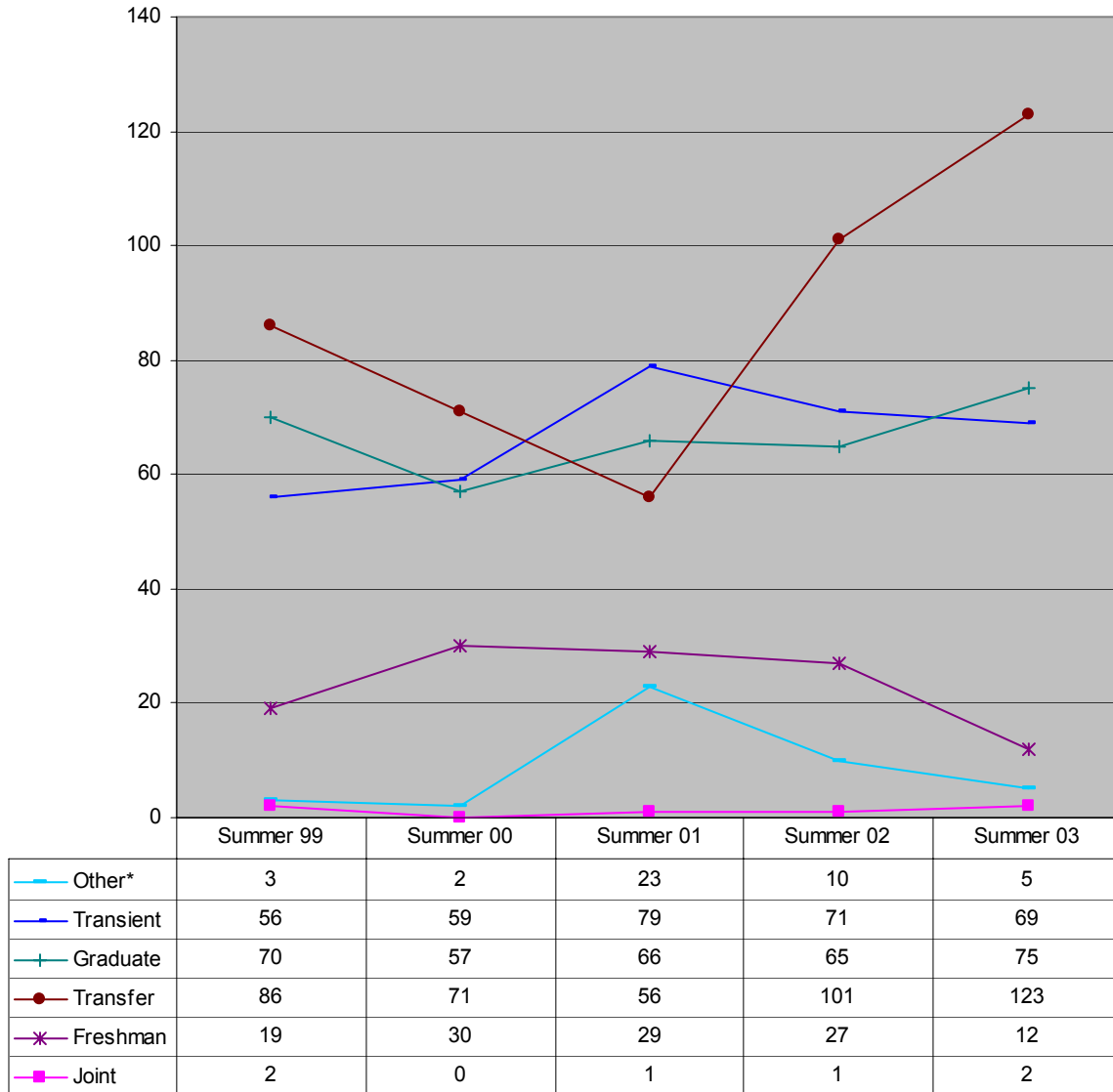



"Other" includes students who already have a bachelors degree but are enrolled in ug courses, and auditors.

 From Summer 02 to Summer 03, the total number of freshmen and sophomores declined by 12%.

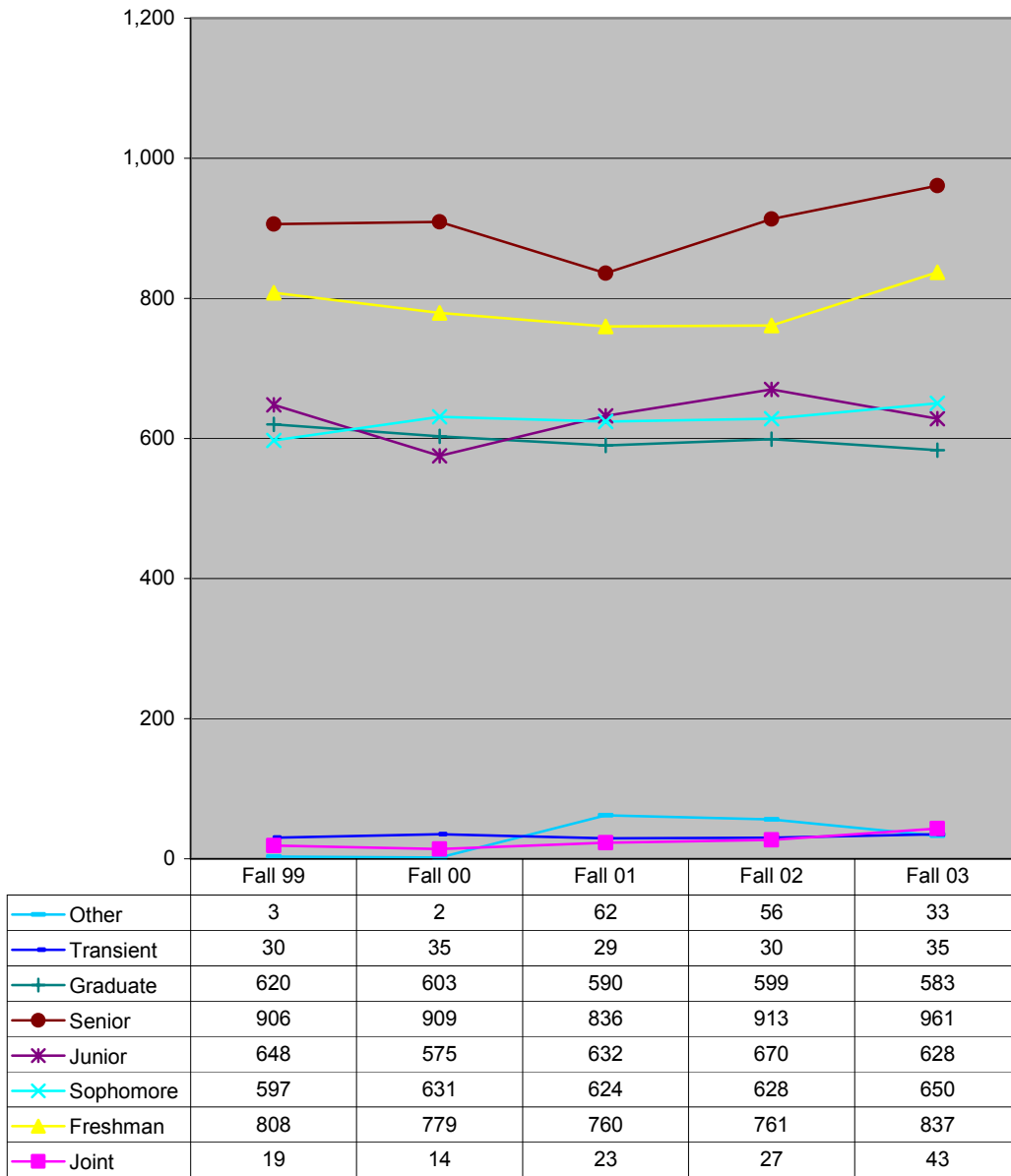
Source: USG SIRS Summer Enrollment Report

New Students by Type Summer 99-03



 From Summer 02 to Summer 03, the numbers of new freshmen declined by 56%.

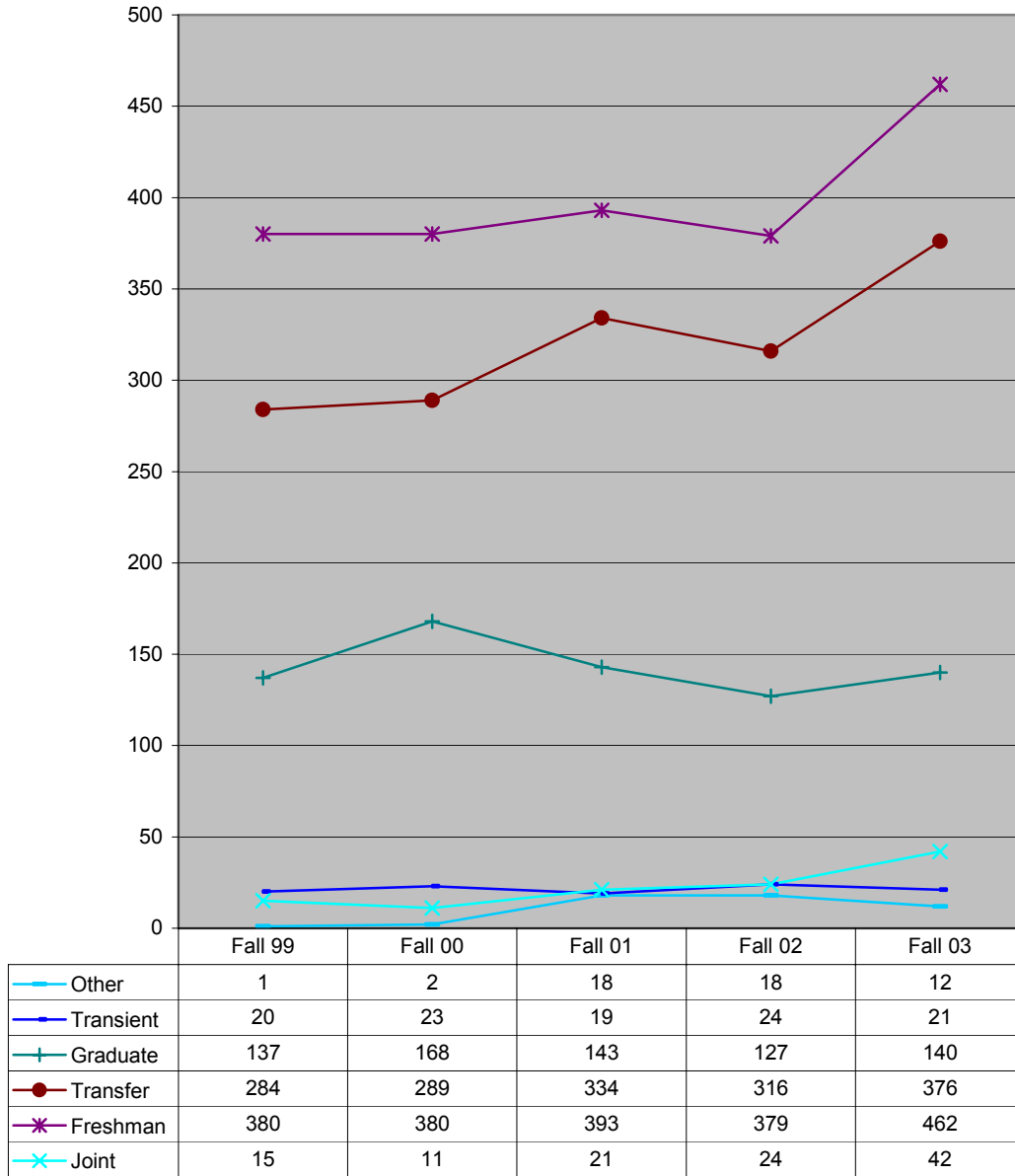
Total Enrollment by Student Type Fall 99-03



"Other" includes students who already have a bachelors degree but are enrolled in ug courses, and auditors.

 Comparing Fall 99 to Fall 03, the total number of juniors and graduate students declined, while the number of students in other categories grew.

New Students by Type Fall 99-03

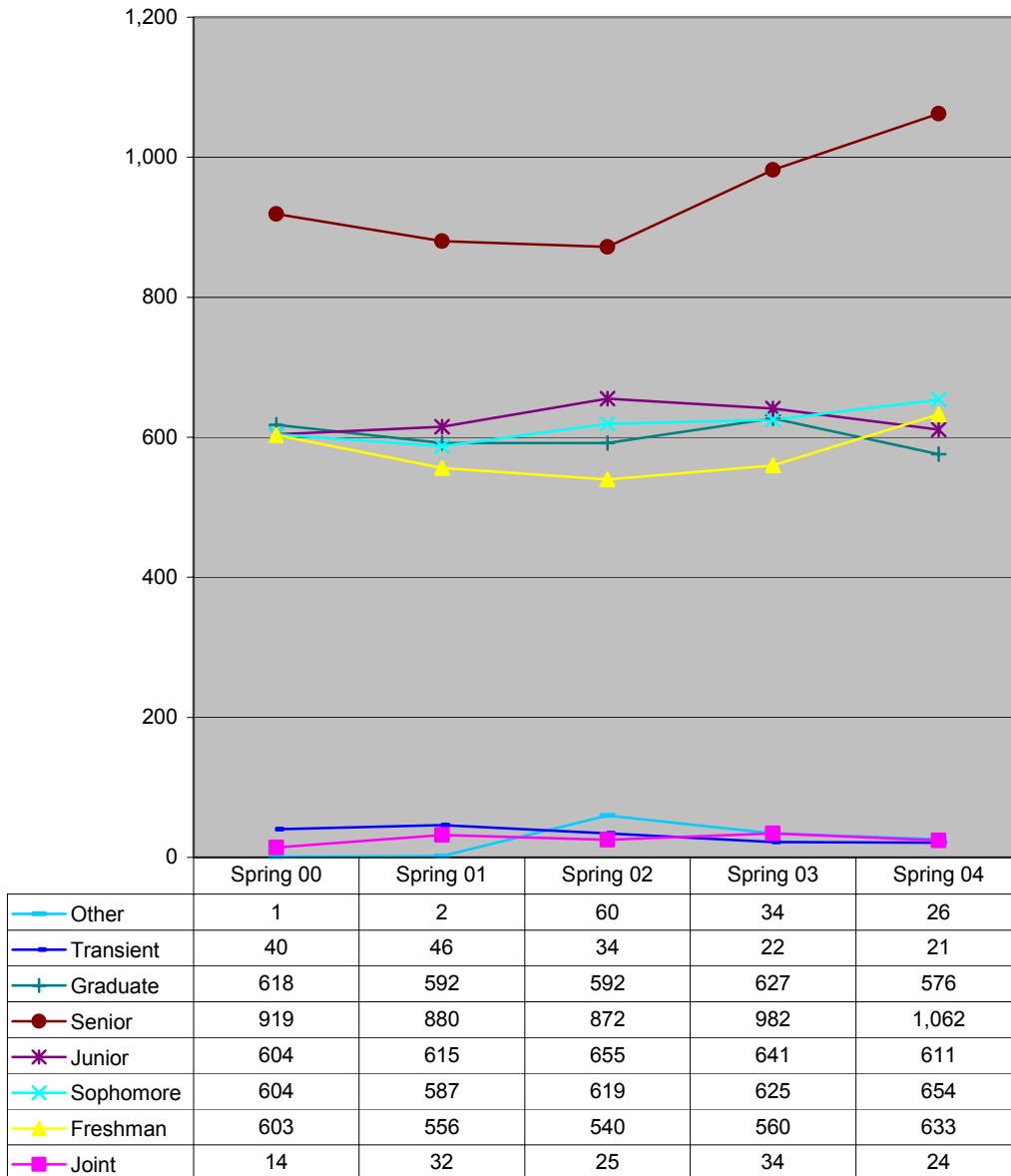


"Other" includes students who already have a bachelors degree but are enrolled in ug courses, and auditors.




Comparing Fall 99 to Fall 03, the number of new students in all categories increased.

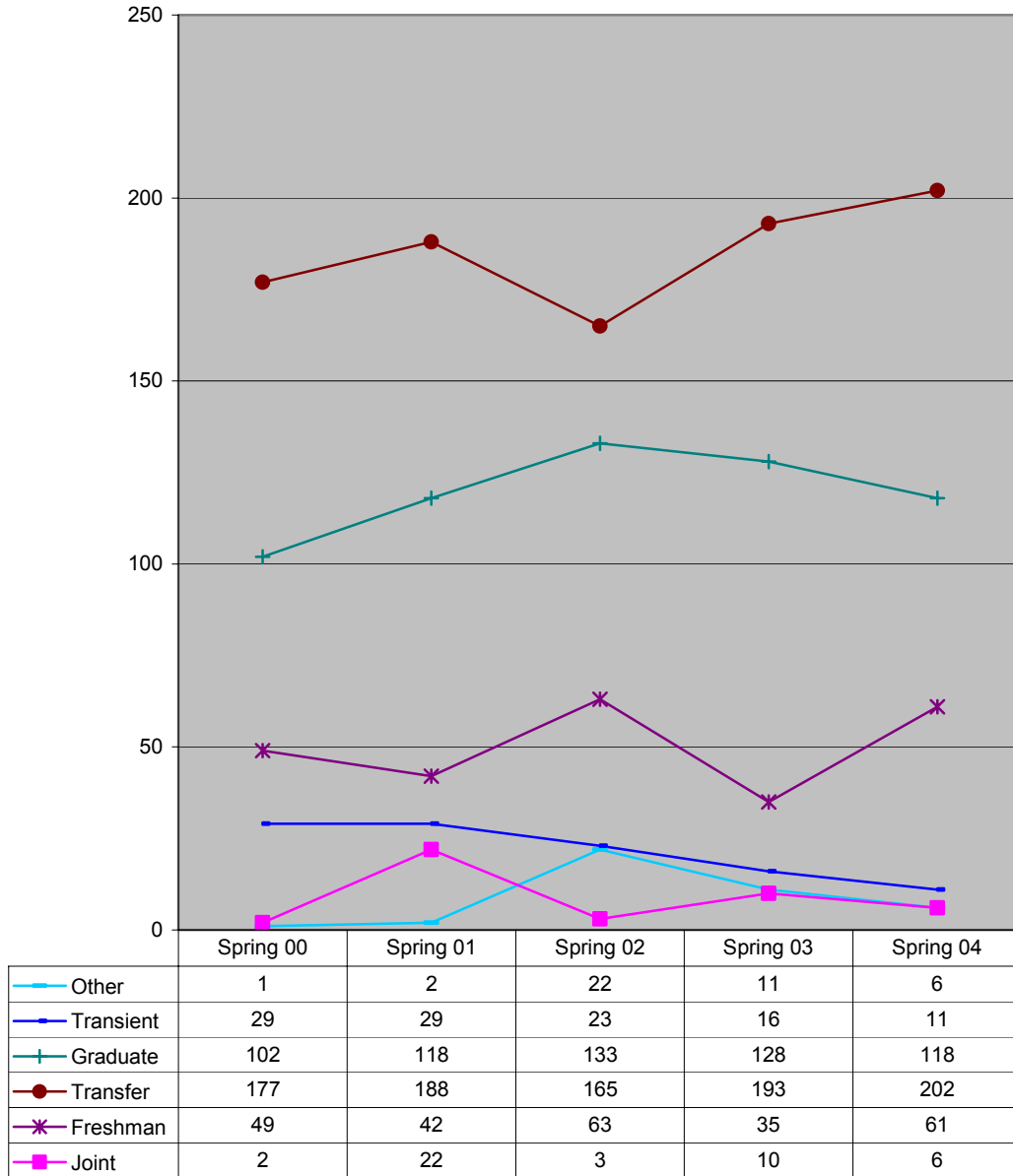
Total Enrollment by Student Type Spring 00-04




“Other” includes students who already have a bachelors degree but are enrolled in ug courses, and auditors.

 **Comparing Spring 00 to Spring 04, all categories, except graduates and transients, increased.**

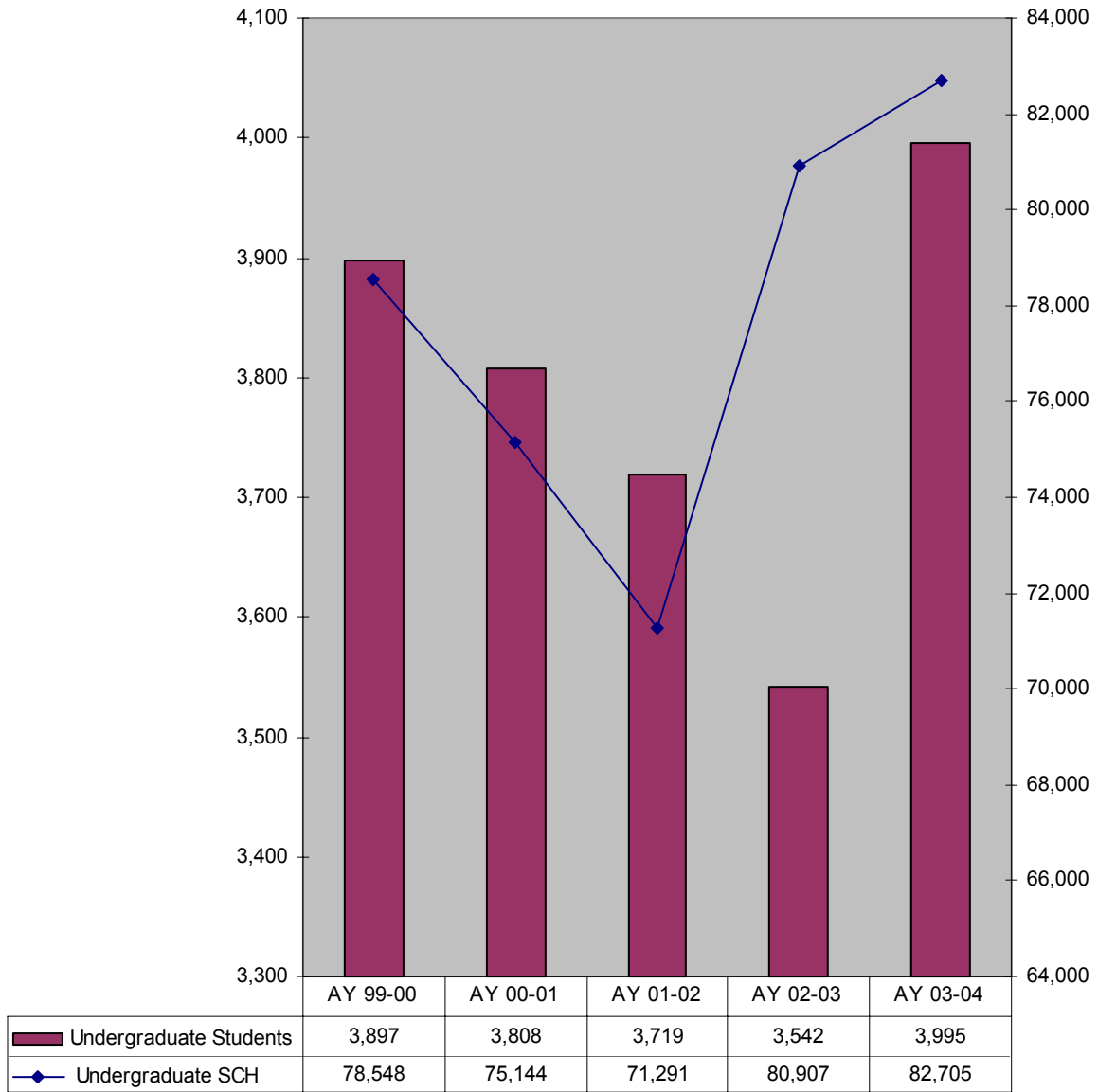
New Students by Type Spring 00-04



“Other” includes students who already have a bachelors degree but are enrolled in ug courses, and auditors.

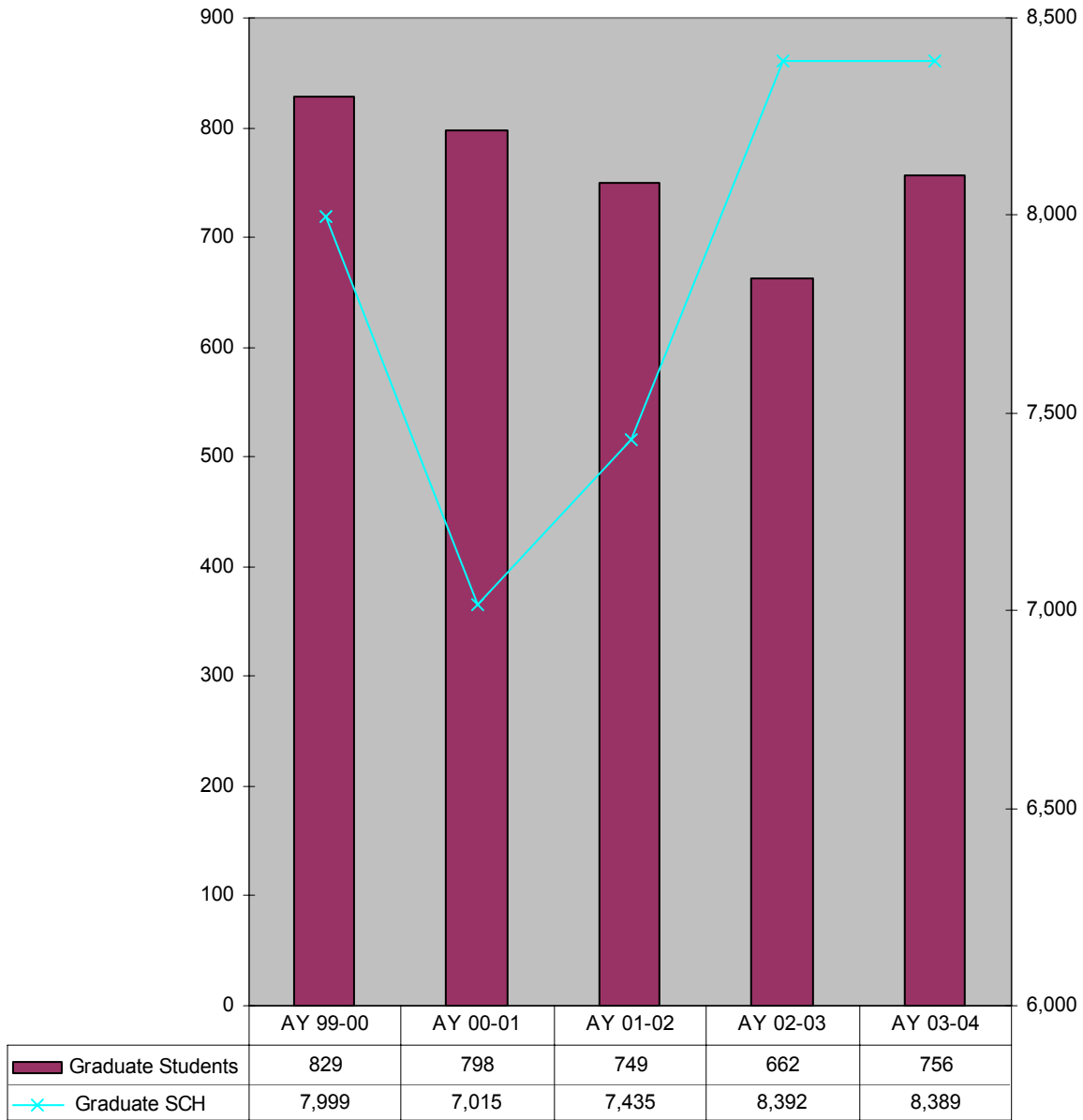
 Comparing Spring 00 to Spring 04, all categories, except transients, increased.


Unduplicated Undergraduate Headcount vs Student Credit Hours AY 99-03



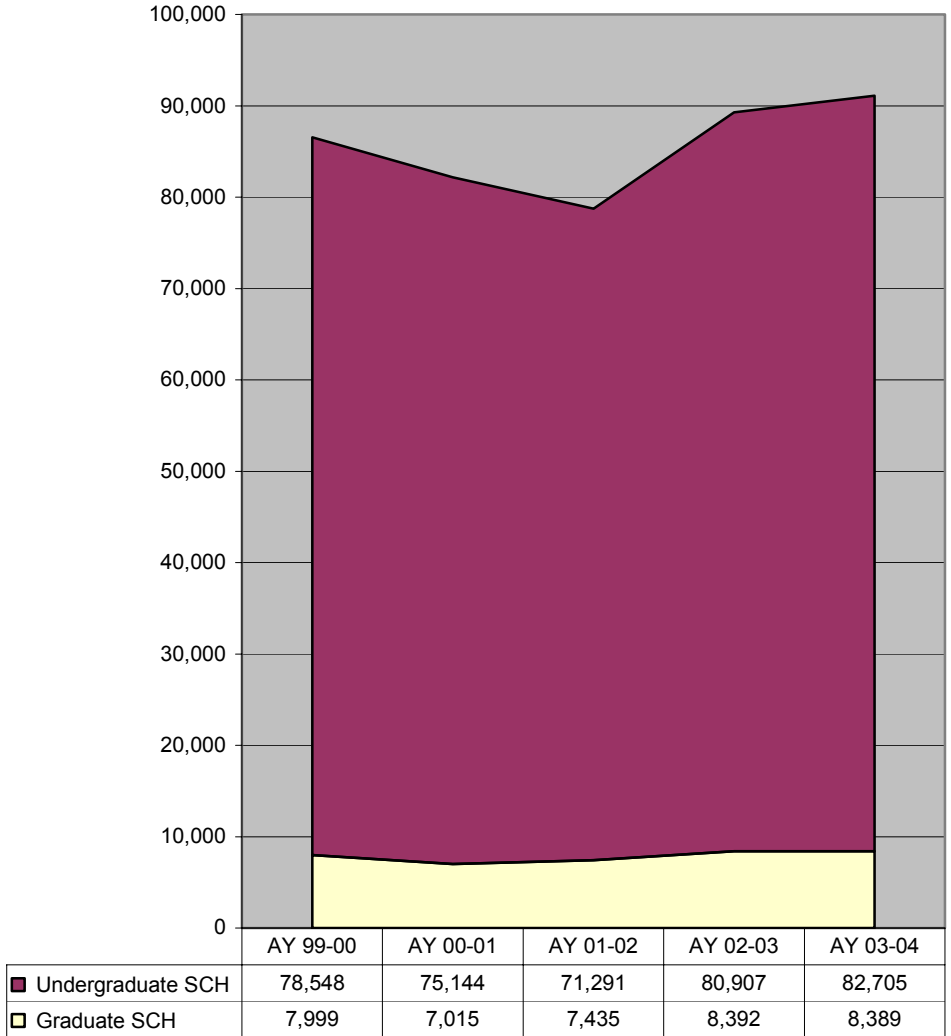
Undergraduate headcount increased by 3% and undergraduate credit hours increased by 2% from 99-00 to 03-04.


Unduplicated Graduate Headcount vs Student Credit Hours AY 99-03



 Graduate headcount decreased by 9% but graduate credit hours increased by 5% from 99-00 to 03-04.

**Student Credit Hours by Level
AY 99-03**



 **Even though graduate student credit hours increased by 5%, and undergraduate student credit hours increased by 2% from 99-00 to 03-04, the proportion of graduate and undergraduate student credit hours remained the same.**

Source: USG Curriculum Inventory Report

**Top Feeder Institutions of Transfer Students by School
AY 03-04**

All Majors (5 or more)		Arts & Sci (3 or more)	
Georgia Perimeter College	66	Georgia Perimeter College	8
Georgia Institute of Technology	49	Georgia Institute of Technology	6
Chattahoochee Technical College	34	Atlanta Metropolitan College	5
Kennesaw State University	23	Southern Union State Community C.	4
Georgia State University	21	Chattahoochee Technical College	3
Floyd College	17	Arch/CET/Const (3 or more)	
Foreign Colleges	17	Georgia Perimeter College	18
State University of West Georgia	16	Gainesville College	8
Gainesville College	14	State University of West Georgia	8
Clayton College & State University	12	Valdosta State College	7
Morris Brown College	12	Floyd College	6
Abraham Baldwin Agricultural C.	11	Kennesaw State University	6
Atlanta Metropolitan College	11	Abraham Baldwin Agricultural College	5
Gwinnett Technical College	11	Clayton College & State University	5
Georgia Southern University	10	Georgia Institute of Technology	5
Valdosta State University	9	Georgia State University	5
Berry College	8	Gordon College	5
Columbus State	8	Morris Brown College	5
Gordon College	8	Auburn University	4
Middle Georgia College	8	Foreign Colleges	4
Auburn University	6	North Georgia College & State U.	4
Dekalb Technical College	6	Chattahoochee Technical College	3
Georgia College & State University	6	Middle Georgia	3
North Georgia College & State U.	6	Truett McConnell College	3
Albany State University	5	Eng Tech/Mgt (3 or more)	
Southern Union State Community C	5	Georgia Institute of Technology	24
Truett McConnell College	5	Georgia Perimeter College	24
Computing/SE (3 or more)		Chattahoochee Technical College	22
Georgia Institute of Technology	13	Kennesaw State University	13
Floyd College	7	Foreign Colleges	12
Gwinnett Technical College	7	Georgia State University	10
Chattahoochee Technical College	6	Georgia Southern University	7
Georgia Perimeter College	6	State University of West Georgia	6
Georgia State University	4	Clayton College & State University	4
Atlanta Metropolitan College	3	Gwinnett Technical College	4
Berry College	3	Morris Brown College	4
Columbus State University	3	Abraham Baldwin Agricultural College	3
Dekalb Technical College	3	Albany State University	3
Jacksonville State University	3	Floyd College	3
Kennesaw State University	3	Gainesville College	3
Morris Brown College	3	Georgia Military College	3

**Grade Distribution by Term
AY 98-02**

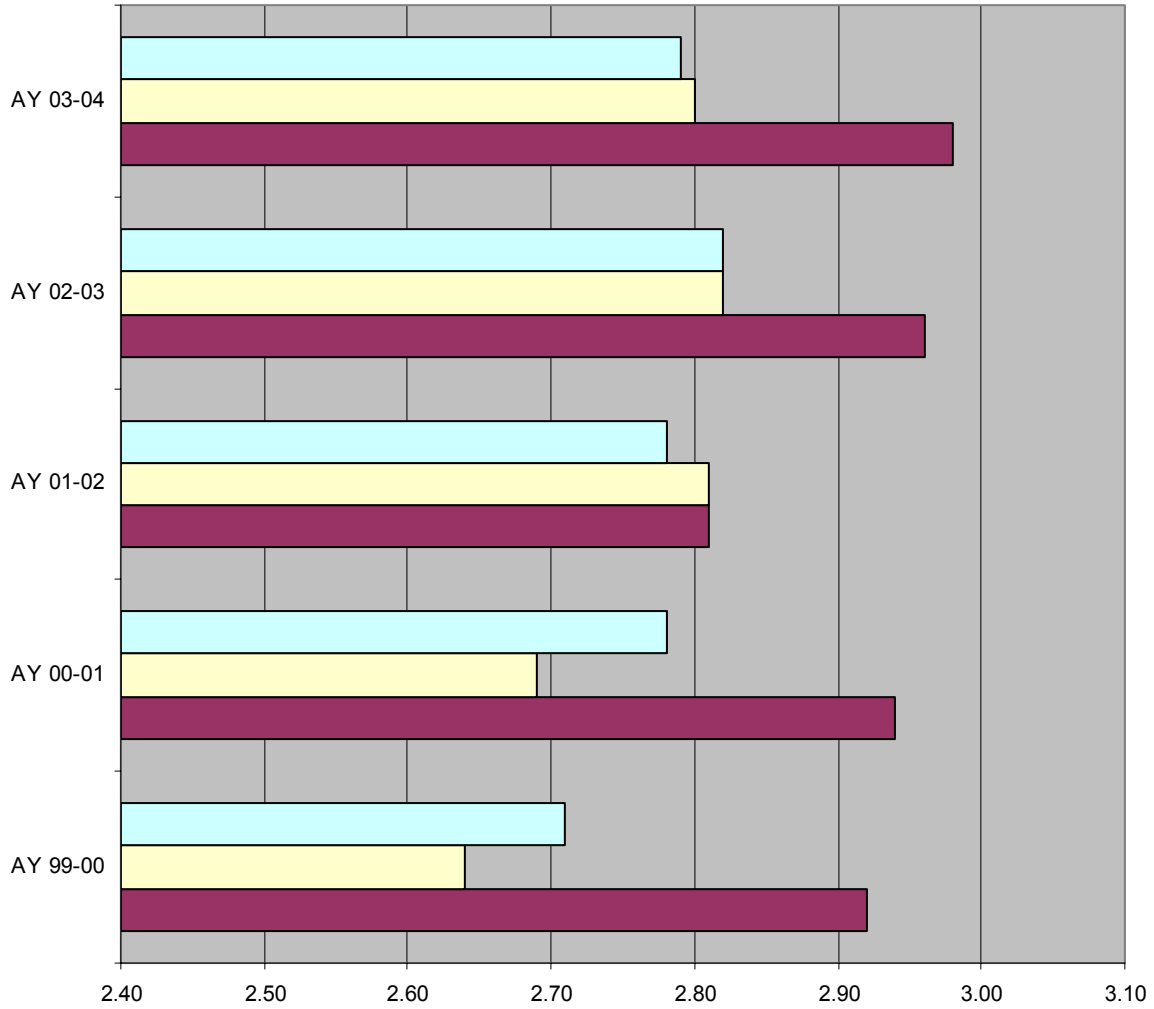
	Percent A's	Percent B's	Percent C's	Percent D's	Percent F's	Percent Other*	Average GPA
AY 99-00							
Summer	31%	29%	17%	4%	4%	13%	2.92
Fall	25%	27%	17%	6%	8%	15%	2.64
Spring	27%	26%	17%	6%	8%	15%	2.71
AY 00-01							
Summer	33%	28%	14%	4%	5%	16%	2.94
Fall	27%	27%	18%	6%	8%	15%	2.69
Spring	30%	27%	16%	5%	7%	15%	2.78
AY 01-02							
Summer	30%	27%	16%	5%	6%	14%	2.81
Fall	30%	29%	17%	5%	6%	12%	2.81
Spring	30%	28%	17%	5%	7%	13%	2.78
AY 02-03							
Summer	36%	27%	13%	4%	6%	12%	2.96
Fall	31%	27%	16%	5%	6%	14%	2.82
Spring	30%	27%	15%	5%	7%	16%	2.82
AY 03-04							
Summer	36%	28%	14%	4%	5%	13%	2.98
Fall	29%	30%	16%	5%	6%	14%	2.80
Spring	28%	30%	16%	5%	7%	14%	2.79

*I, IP, K, NR, S, U, V, W, WF


 From 99-00 to 03-04, the percentage of A's granted has increased in all terms.

Source: SPSU Banner Report WSHR0700

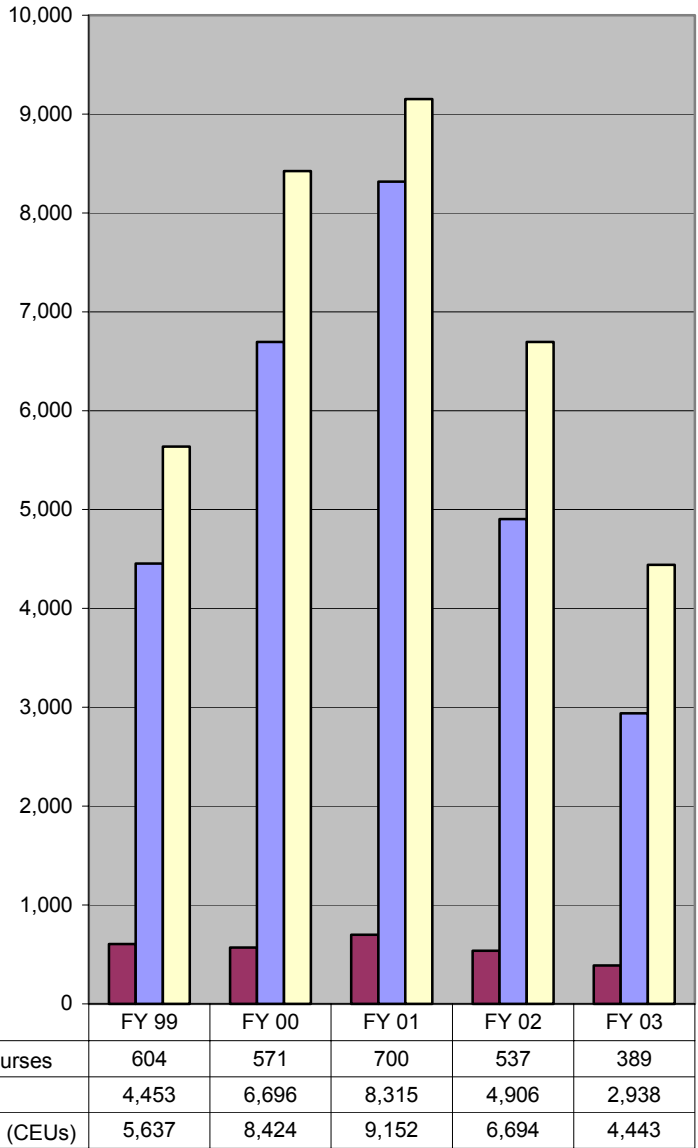
**Average GPA by Term
AY 99-03**



	AY 99-00	AY 00-01	AY 01-02	AY 02-03	AY 03-04
Spring	2.71	2.78	2.78	2.82	2.79
Fall	2.64	2.69	2.81	2.82	2.80
Summer	2.92	2.94	2.81	2.96	2.98

 Over the past five years, the average gpa for summer increased by 2%, the average gpa for fall increased by 6% and the average gpa for spring increased by 3%.

Continuing Education Enrollment FY 99-03



 **The number of programs/courses declined by 36%, the number of participants declined by 34% and the number of CEUs declined by 21% over the past five years.**