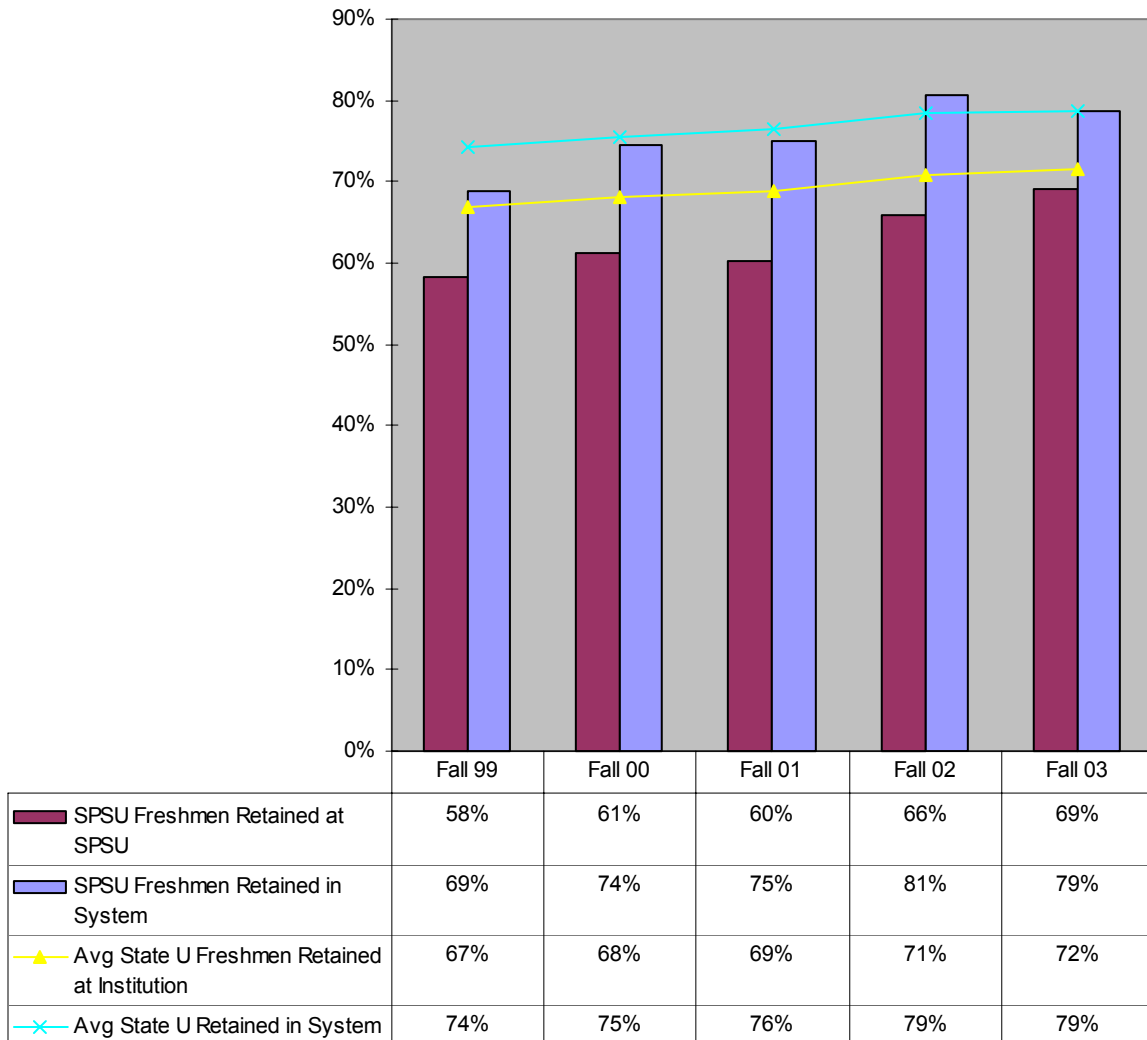


**Fall-to-Fall Retention Rates
First-Time Full-time Freshmen
SPSU vs USG State Universities
Fall 99-03**



 In Fall 03, the State Universities of the University System of Georgia had an average freshman retention rate 3 percentage points higher than SPSU’s freshman retention rate.

 In Fall 02 and Fall 03, SPSU students were retained in the USG system at the same rate or better than the State Universities.

**Fall-to-Fall Retention and Graduation Rates
First-time Full-time Freshmen by Major
Fall 98-02**

	1998 Number Enrolled	% Retained after 1 year	% Retained after 2 years	% Retained after 3 years	% Graduated in 6 years
Apparel/Textile Engineering Technology	9	44%	33%	22%	11%
Civil Engineering Technology	29	48%	45%	31%	14%
Computer Engineering Technology	40	63%	45%	35%	13%
Computer Science	78	56%	41%	24%	12%
Construction	12	67%	42%	25%	17%
Electrical Engineering Technology	35	66%	43%	20%	9%
General Studies	50	40%	18%	4%	0%
Industrial Distribution	1	0%	0%	0%	0%
Industrial Engineering Technology	6	67%	33%	17%	0%
Management	8	63%	38%	38%	13%
Mathematics	1	0%	0%	0%	0%
Mechanical Engineering Technology	36	39%	14%	11%	6%
Physics	4	50%	25%	25%	25%
Pre-Architecture	56	38%	20%	7%	5%
Technical and Professional Communication	1	0%	0%	0%	0%
Telecommunications Engineering Technology	1	100%	0%	0%	0%
	1999 Number Enrolled	% Retained after 1 year	% Retained after 2 years	% Retained after 3 years	% Graduated in 5 years
Apparel/Textile Engineering Technology	10	70%	70%	50%	30%
Civil Engineering Technology	13	54%	46%	31%	0%
Computer Engineering Technology	41	54%	39%	20%	2%
Computer Science	79	49%	29%	22%	9%
Construction	11	46%	55%	46%	0%
Electrical Engineering Technology	40	63%	35%	33%	8%
General Studies	36	44%	3%	3%	0%
Industrial Engineering Technology	13	77%	77%	69%	46%
Management	5	60%	40%	40%	20%
Mathematics	5	60%	40%	40%	20%
Mechanical Engineering Technology	38	55%	32%	26%	8%
Physics	2	0%	0%	0%	0%
Pre-Architecture	34	59%	41%	27%	3%
Surveying and Mapping	2	0%	50%	50%	0%
Technical and Professional Communication	5	40%	0%	0%	0%
Telecommunications Engineering Technology	6	67%	50%	33%	17%
	2000 Number Enrolled	% Retained after 1 year	% Retained after 2 years	% Retained after 3 years	% Graduated in 4 years
Apparel/Textile Engineering Technology	4	50%	50%	25%	0%
Architecture/Pre-Architecture	53	51%	34%	30%	0%
Civil Engineering Technology	18	50%	22%	22%	0%
Computer Engineering Technology	38	68%	58%	40%	11%
Computer Science	89	46%	30%	23%	3%
Construction	8	75%	38%	50%	0%
Electrical Engineering Technology	26	39%	27%	19%	0%
General Studies/Undeclared	43	14%	2%	0%	0%
Industrial Engineering Technology	6	50%	17%	17%	0%

**Fall-to-Fall Retention and Graduation Rates
First-time Full-time Freshmen by Major (continued)**

	2000 Number Enrolled	% Retained after 1 year	% Retained after 2 years	% Retained after 3 years	% Graduated in 4 years
Management	5	60%	40%	40%	0%
Mathematics	1	100%	100%	100%	100%
Mechanical Engineering Technology	47	43%	23%	23%	2%
Physics	4	50%	50%	25%	0%
Surveying and Mapping	1	0%	0%	0%	0%
Technical and Professional Communication	1	100%	100%	100%	0%
Telecommunications Engineering Technology	2	50%	0%	0%	0%
	2001 Number Enrolled	% Retained after 1 year	% Retained after 2 years		
Apparel/Textile Engineering Technology	11	55%	36%		
Civil Engineering Technology	25	44%	32%		
Computer Engineering Technology	44	66%	34%		
Computer Science	95	57%	23%		
Construction	9	78%	89%		
Electrical Engineering Technology	21	52%	24%		
General Studies	35	37%	6%		
Industrial Engineering Technology	4	100%	75%		
Management	6	33%	17%		
Mathematics	1	0%	0%		
Mechanical Engineering Technology	40	80%	45%		
Physics	6	50%	33%		
Pre-Architecture	56	46%	34%		
Software Engineering	1	0%	0%		
Surveying and Mapping	2	50%	50%		
Technical and Professional Communication	0				
Telecommunications Engineering Technology	11	55%	27%		
	2002 Number Enrolled	% Retained after 1 year			
Apparel/Textile Engineering Technology	5	40%			
Biology	1	0%			
Civil Engineering Technology	21	67%			
Computer Engineering Technology	31	45%			
Computer Science	70	57%			
Construction	15	93%			
Electrical Engineering Technology	24	63%			
General Studies	40	30%			
Industrial Engineering Technology	7	71%			
Information Technology	7	57%			
Management	3	0%			
Mathematics	5	60%			
Mechanical Engineering Technology	47	62%			
Physics	3	100%			
Pre-Architecture	55	58%			
Software Engineering	11	64%			

**Fall-to-Fall Retention and Graduation Rates
First-time Full-time Freshmen by Major (continued)**

	2002 Number Enrolled	% Retained after 1 year			
Surveying and Mapping	7	57%			
Technical and Professional Communication	2	100%			
Telecommunications Engineering Technology	4	50%			

 The Physics program has the highest graduation rate of freshmen after six years (25%).

Source SPSU Banner Report WSGR1620

**Fall-to-Fall Retention and Graduation Rates
First-Time Transfers by Major
Fall 98-02**

	1998 Number Enrolled	% Retained after 1 year	% Retained after 2 years	% Graduated in 2 years	% Graduated in 3 years	% Graduated in 4 years	% Graduated in 5 years
Apparel/Text. Eng. Tech.	11	55%	46%	9%	9%	18%	36%
Civil Engineering Tech.	45	58%	40%	11%	29%	36%	40%
Computer Eng. Tech.	37	41%	35%	0%	5%	11%	16%
Computer Science	114	47%	24%	12%	18%	25%	29%
Construction	28	57%	50%	4%	32%	46%	50%
Electrical Eng. Tech.	62	53%	32%	5%	8%	16%	23%
General Studies	18	17%	11%	6%	6%	6%	6%
Industrial Eng. Tech.	25	60%	36%	20%	40%	52%	56%
Management	26	54%	35%	8%	19%	27%	27%
Mathematics	8	38%	13%	13%	13%	13%	13%
Mechanical Eng. Tech.	51	45%	25%	4%	4%	12%	20%
Physics	4	50%	25%	0%	0%	25%	25%
Pre-Architecture	30	50%	23%	0%	0%	0%	0%
Surveying and Mapping	2	50%	50%	0%	0%	0%	0%
Tech. & Profess. Comm.	5	40%	40%	20%	20%	20%	20%
Telecomm. Eng. Tech.	1	100%	100%	0%	0%	0%	0%
	1999 Number Enrolled	% Retained after 1 year	% Retained after 2 years	% Graduated in 2 years	% Graduated in 3 years	% Graduated in 4 years	
Apparel/Text. Eng. Tech.	9	44%	56%	11%	11%	33%	
Civil Engineering Tech.	28	43%	21%	7%	14%	18%	
Computer Eng. Tech.	36	42%	31%	3%	3%	11%	
Computer Science	89	46%	25%	9%	19%	25%	
Construction	30	57%	50%	7%	27%	40%	
Electrical Eng. Tech.	59	36%	22%	3%	7%	12%	
General Studies	27	26%	13%	11%	0%	0%	
Industrial Distribution	5	40%	60%	0%	0%	20%	
Industrial Eng. Tech.	26	73%	35%	12%	31%	31%	
Management	23	52%	44%	4%	17%	35%	
Mathematics	4	50%	0%	25%	25%	25%	
Mechanical Eng. Tech.	68	47%	31%	7%	10%	18%	
Physics	2	0%	0%	0%	0%	0%	
Pre-Architecture	39	31%	23%	0%	0%	0%	
Surveying and Mapping	8	25%	25%	13%	13%	25%	
Tech. & Profess. Comm.	6	33%	17%	0%	17%	17%	
Telecomm. Eng. Tech.	5	40%	40%	0%	0%	0%	
	2000 Number Enrolled	% Retained after 1 year	% Retained after 2 years	% Graduated in 2 years	% Graduated in 3 years		
Apparel/Text. Eng. Tech.	9	22%	11%	22%	22%		
Architecture/Pre-Architect.	44	55%	38%	0%	2%		
Civil Engineering Tech.	33	55%	27%	21%	42%		
Computer Eng. Tech.	39	62%	51%	3%	10%		
Computer Science	84	57%	37%	10%	21%		
Construction	25	68%	72%	4%	36%		

**Fall-to-Fall Retention and Graduation Rates
First-Time Transfers by Major (continued)**

	2000 Number Enrolled	% Retained after 1 year	% Retained after 2 years	% Graduated in 2 years	% Graduated in 3 years		
Electrical Eng. Tech.	58	41%	41%	7%	16%		
General Studies	34	9%	3%	0%	0%		
Industrial Distribution	2	0%	0%	50%	50%		
Industrial Eng. Tech.	24	46%	33%	4%	25%		
Management	16	31%	6%	6%	13%		
Mathematics	3	67%	0%	33%	33%		
Mechanical Eng. Tech.	42	38%	29%	2%	7%		
Physics	5	40%	20%	0%	0%		
Surveying and Mapping	8	63%	25%	25%	50%		
Tech. & Profess. Comm.	3	33%	33%	0%	0%		
Telecomm. Eng. Tech.	5	0%	0%	0%	0%		
	2001 Number Enrolled	% Retained after 1 year	% Retained after 2 years	% Graduated in 2 years			
Apparel/Text. Eng. Tech.	13	54%	46%	8%			
Applied Science	1	0%	0%	100%			
Civil Engineering Tech.	59	37%	27%	7%			
Computer Eng. Tech.	40	48%	23%	3%			
Computer Science	98	47%	23%	12%			
Construction	34	68%	35%	18%			
Electrical Eng. Tech.	53	53%	28%	4%			
General Stud/Undeclared	27	22%	4%	0%			
Industrial Distribution	2	0%	0%	100%			
Industrial Eng. Tech.	16	44%	19%	25%			
Information Technology	7	100%	29%	43%			
Internat. Technical Comm.	1	100%	0%	0%			
Management	29	55%	45%	21%			
Mathematics	6	50%	17%	17%			
Mechanical Eng. Tech.	53	66%	41%	4%			
Physics	2	50%	0%	0%			
Pre-Architecture	35	57%	49%	0%			
Software Engineering	3	33%	0%	33%			
Surveying and Mapping	8	50%	0%	0%			
Tech. & Profess. Comm.	13	77%	31%	15%			
Telecomm. Eng. Tech.	19	42%	26%	0%			
	2002 Number Enrolled	% Retained after 1 year					
Apparel/Text. Eng. Tech.	7	57%					
Civil Engineering Tech.	54	46%					
Computer Eng. Tech.	31	36%					
Computer Science	80	54%					
Construction	36	44%					
Electrical Eng. Tech.	54	48%					
General Stud/Undeclared	18	17%					
Industrial Distribution	1	0%					

**Fall-to-Fall Retention and Graduation Rates
First-Time Transfers by Major (continued)**

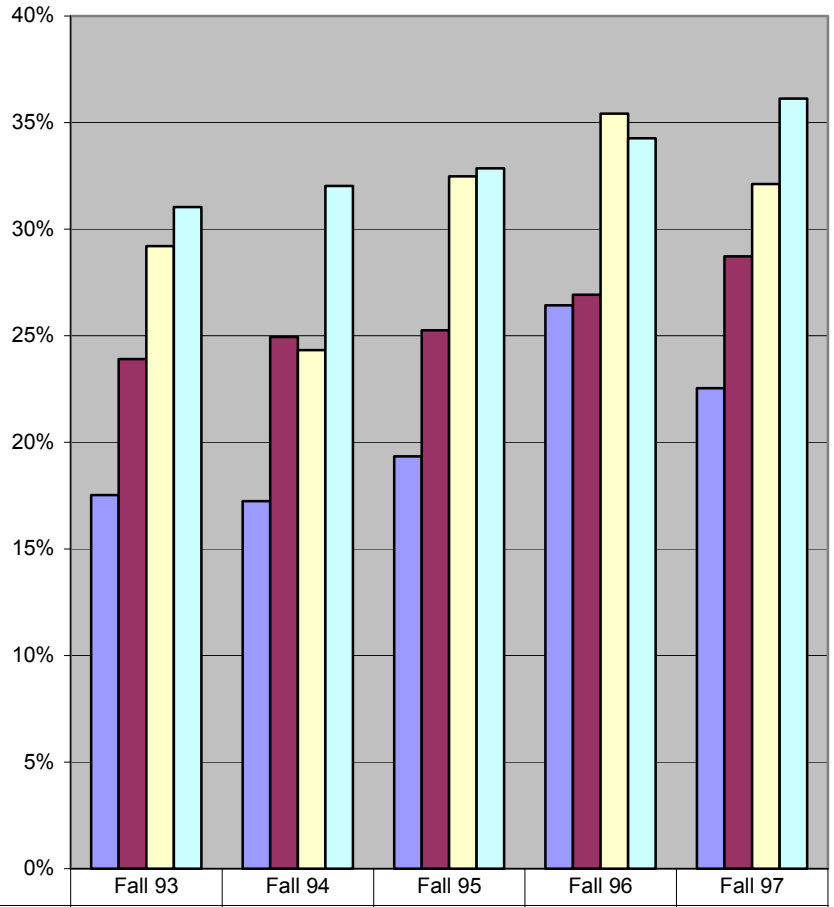
	2002 Number Enrolled	% Retained after 1 year					
Industrial Eng. Tech.	11	73%					
Information Technology	15	60%					
Internat. Technical Comm.	1	100%					
Management	38	47%					
Mathematics	4	75%					
Mechanical Eng. Tech.	49	53%					
Physics	4	25%					
Pre-Architecture	66	67%					
Software Engineering	5	60%					
Surveying and Mapping	10	50%					
Tech. & Profess. Comm.	6	50%					
Telecomm. Eng. Tech.	15	40%					



The Industrial Engineering Technology program has the highest graduation rate of transfers after five years (56%).

Source: SPSU Banner Report WSGR1620

**6-Year Graduation Rates
SPSU vs USG State Universities
First-time Full-time Freshmen Entering Fall 93-97**



	Fall 93	Fall 94	Fall 95	Fall 96	Fall 97
■ Freshmen graduating from SPSU in 6-yrs	18%	17%	19%	26%	23%
■ Freshmen graduating from USG State U in 6-Yrs	24%	25%	25%	27%	29%
■ SPSU Freshmen graduating from USG in 6-yrs	29%	24%	32%	35%	32%
■ State U Freshmen graduating from USG in 6-Yrs	31%	32%	33%	34%	36%

 **The graduation rate of SPSU freshmen from SPSU and other USG schools has declined by 3 percentage points over the past year.**

Source: USG Retention Report

**4, 5, and 6-Year Graduation Rates
First-time, Full-time Freshmen Entering Fall 1997
by Ethnicity**

	Entering Fall 1997	Receiving Degree by Summer 2001	Four-Year Graduation Rate		
Full-Time, First Time Bachelor's Degree-Seeking Undergraduates					
Nonresident Alien	6	0	0%		
Black	65	2	3%		
American Indian	1	0	0%		
Asian	15	2	13%		
Hispanic	7	0	0%		
White	292	11	4%		
Total	386	15	4%		
	Entering Fall 1997	Receiving Degree by Summer 2002	Five-Year Graduation Rate		
Full-Time, First Time Bachelor's Degree-Seeking Undergraduates					
Nonresident Alien	6	0	0%		
Black	65	12	18%		
American Indian	1	0	0%		
Asian	15	4	27%		
Hispanic	7	1	14%		
White	292	43	15%		
Total	386	60	16%		
	Entering Fall 1997	Receiving Degree by Summer 2003	Six-Year Graduation Rate	Transfer Out by Summer 2003	Six-Year Transfer Out Rate
Full-Time, First Time Bachelor's Degree-Seeking Undergraduates					
Nonresident Alien	6	0	0%	1	17%
Black	65	19	29%	16	25%
American Indian	1	0	0%	0	0%
Asian	15	4	27%	6	40%
Hispanic	7	1	14%	3	43%
White	292	63	22%	114	39%
Total	386	87	23%	140	36%



The six-year graduation rate for Blacks is 7 percentage points higher than for Whites.