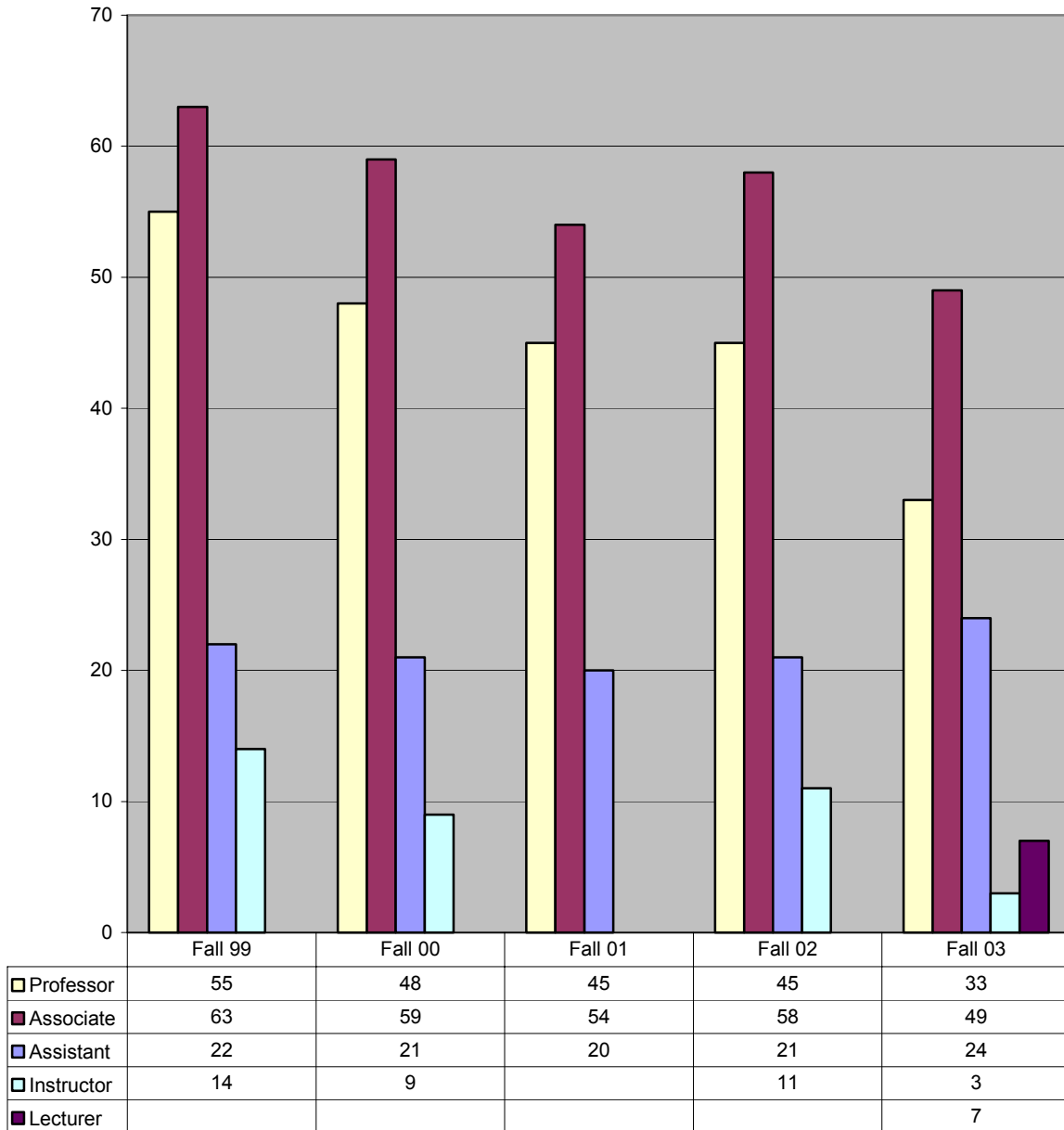



Full-time Faculty by Rank Fall 99-03



 There has been a 16% decline in the number of full-time faculty over the past five years.

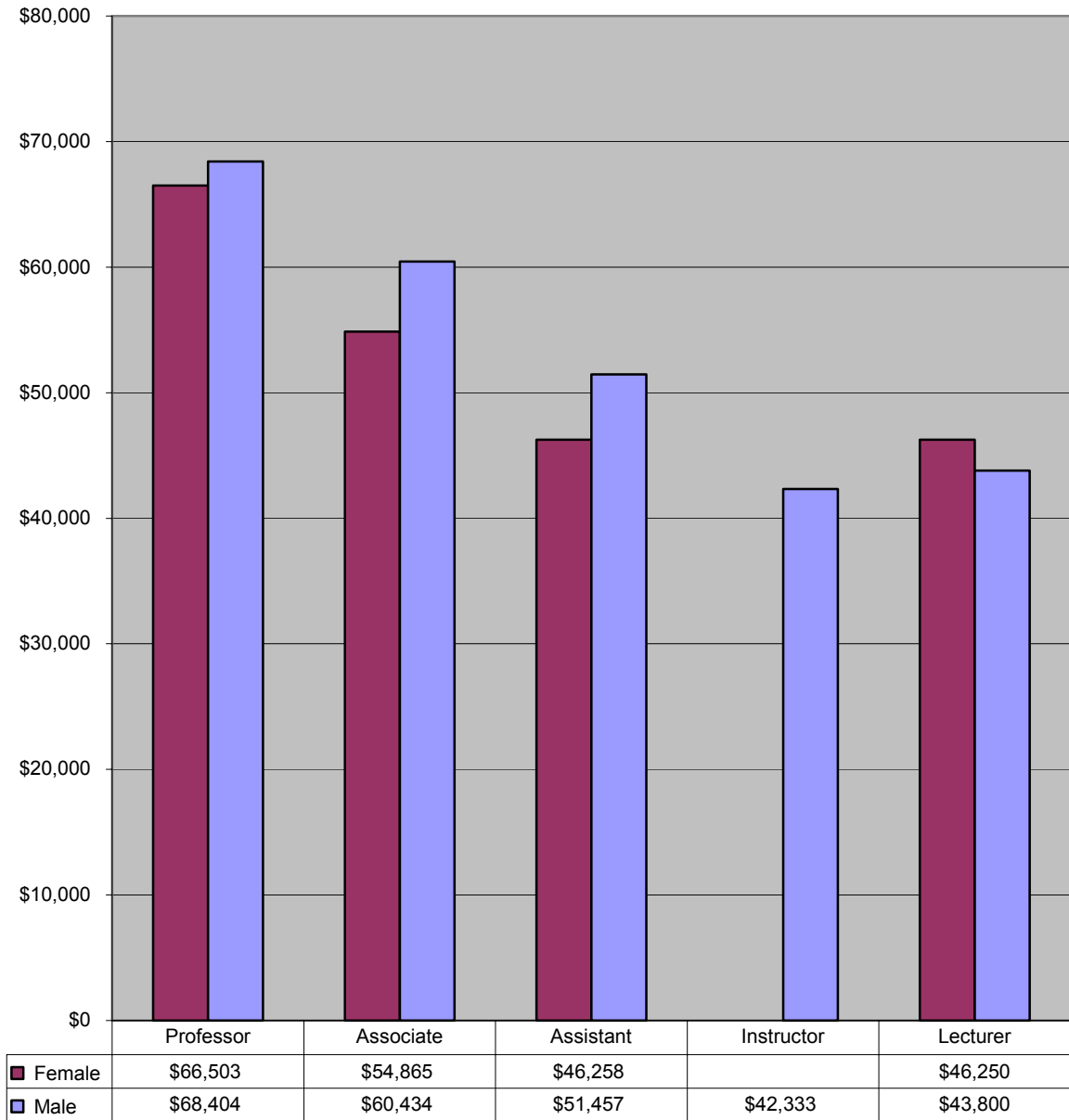
**Average Faculty Salaries by Rank and Gender
Fall 99-03**


	Fall 99	Fall 00	Fall 01	Fall 02	Fall 03
Professor					
Male	\$59,797	\$62,335	\$64,412	\$67,814	\$68,983
Female	\$58,365	\$60,157	\$61,829	\$64,769	\$59,247
Associate					
Male	\$51,585	\$53,527	\$56,218	\$57,242	\$57,948
Female	\$44,614	\$49,485	\$51,624	\$55,168	\$52,628
Assistant					
Male	\$45,831	\$47,238	\$48,771	\$51,477	\$51,215
Female	\$38,177	\$41,155	\$45,420	\$43,758	\$45,510
Instructor					
Male	\$37,416	\$40,506	\$40,660		\$43,377
Female	\$35,376	\$40,577	\$41,873		\$48,167
Lecturer					
Male					\$43,800
Female					\$46,250

 **Male Associate Professors experienced the largest five-year increase in average salary (13%).**

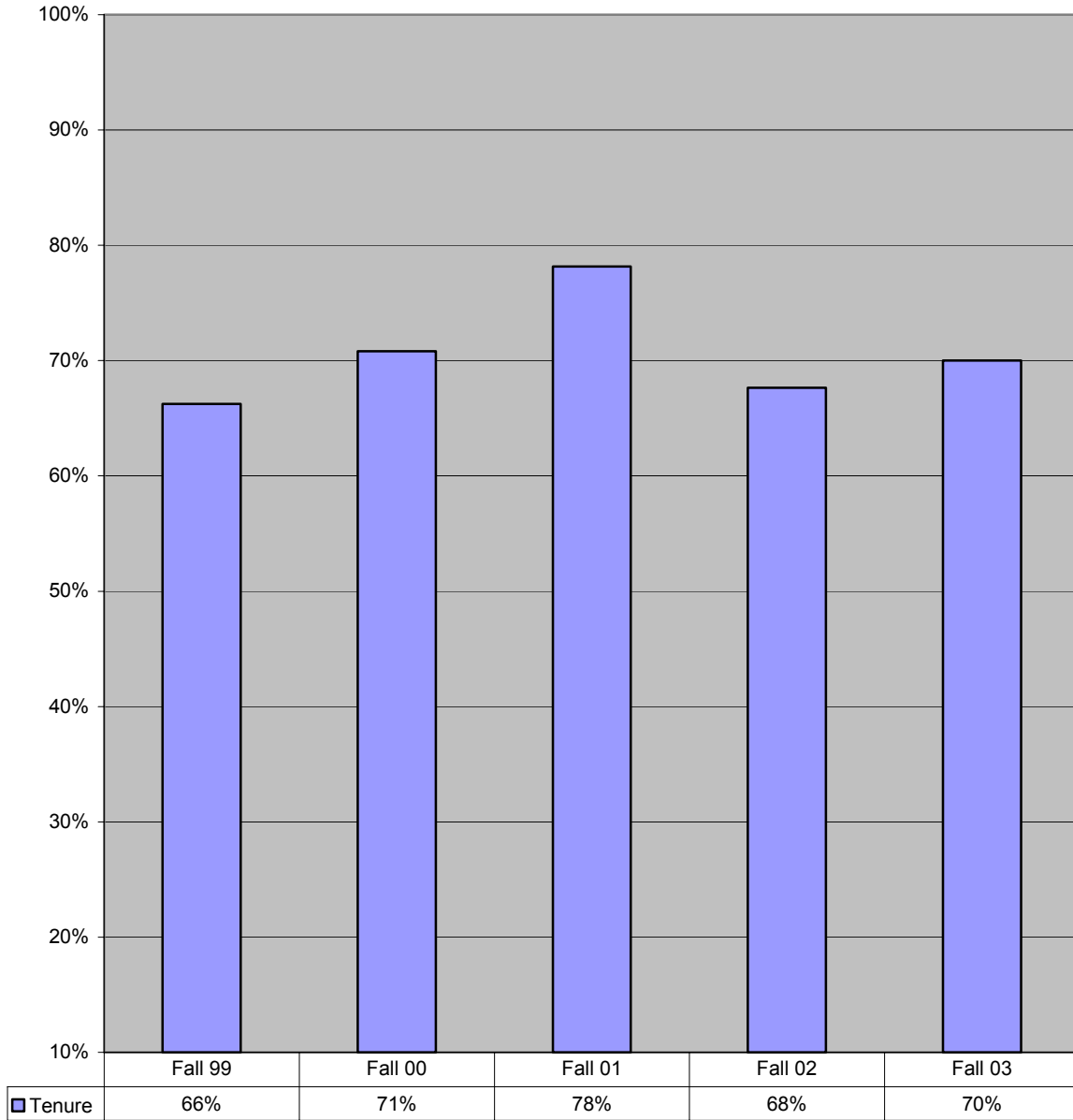
Source: AAUP Annual Faculty Compensation Survey


Average Faculty Salaries by Rank and Gender Fall 03



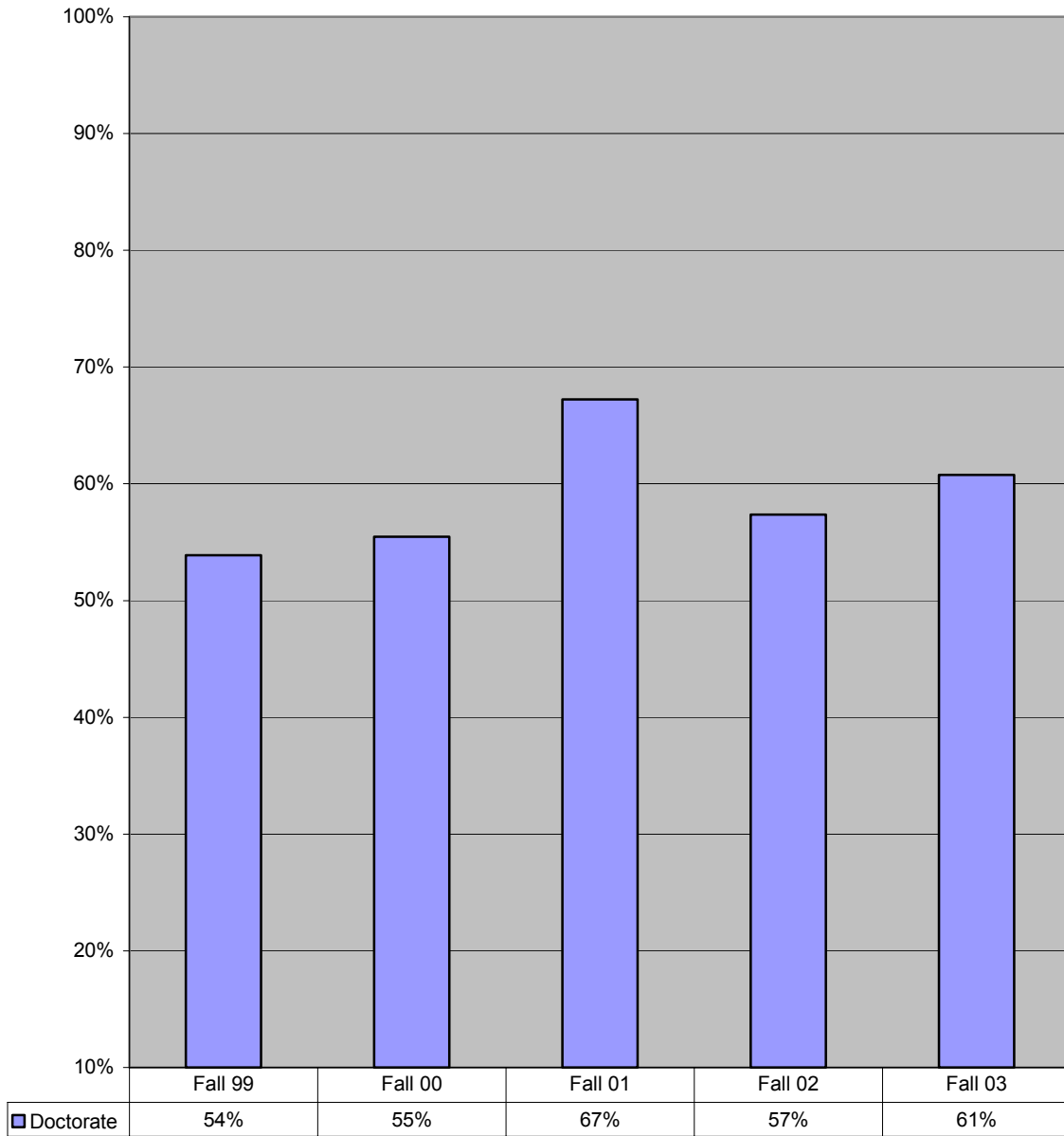
 The largest disparity between male and female average salaries is at the Associate Professor level (\$5,569).

**Percentage of Full-time Faculty with Tenure
Fall 99-03**



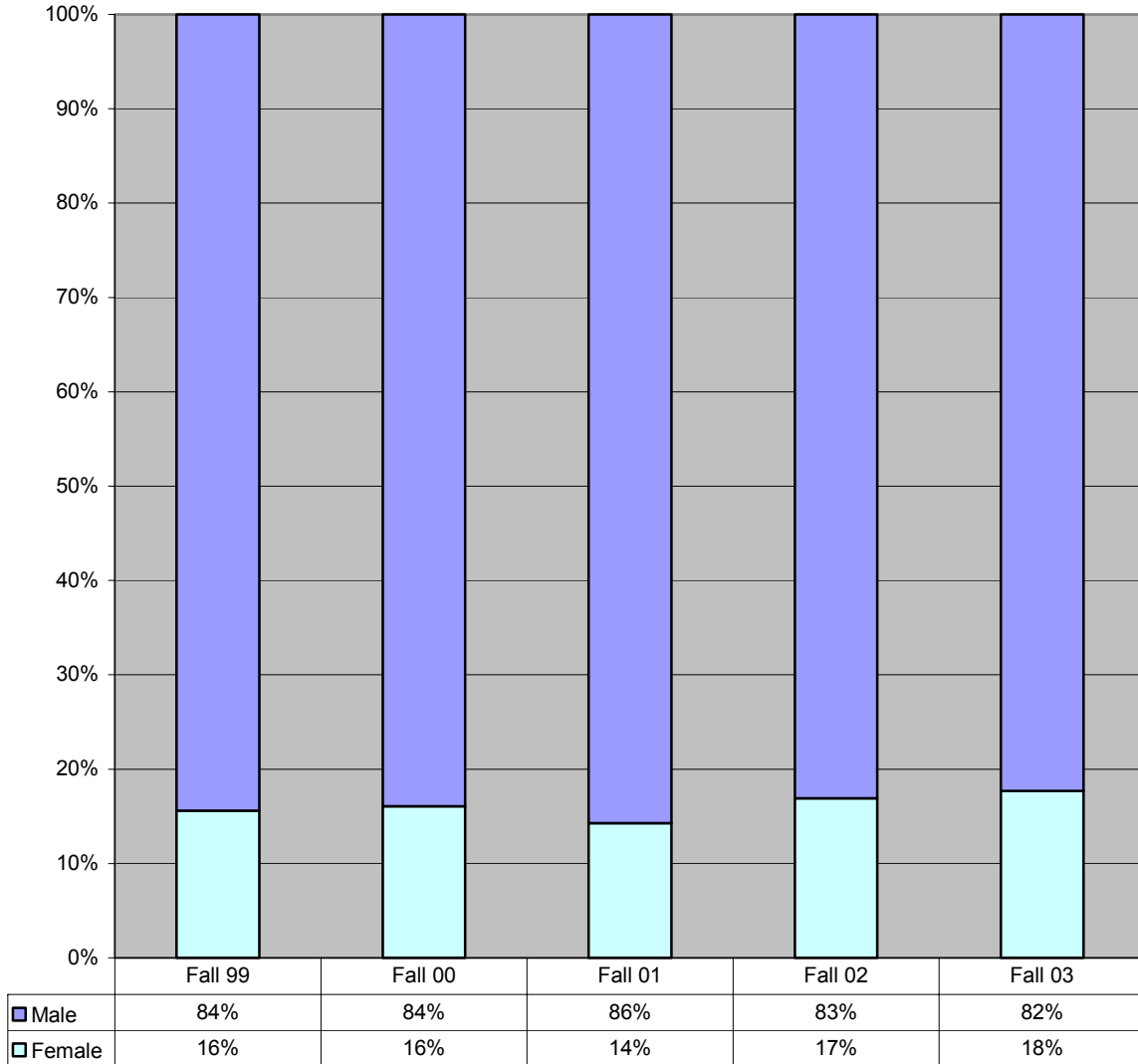
 From Fall 02 to Fall 03, the portion of full-time faculty who are tenured climbed by 2 percentage points.

**Percentage of Full-time Faculty with Doctorate
Fall 99-03**



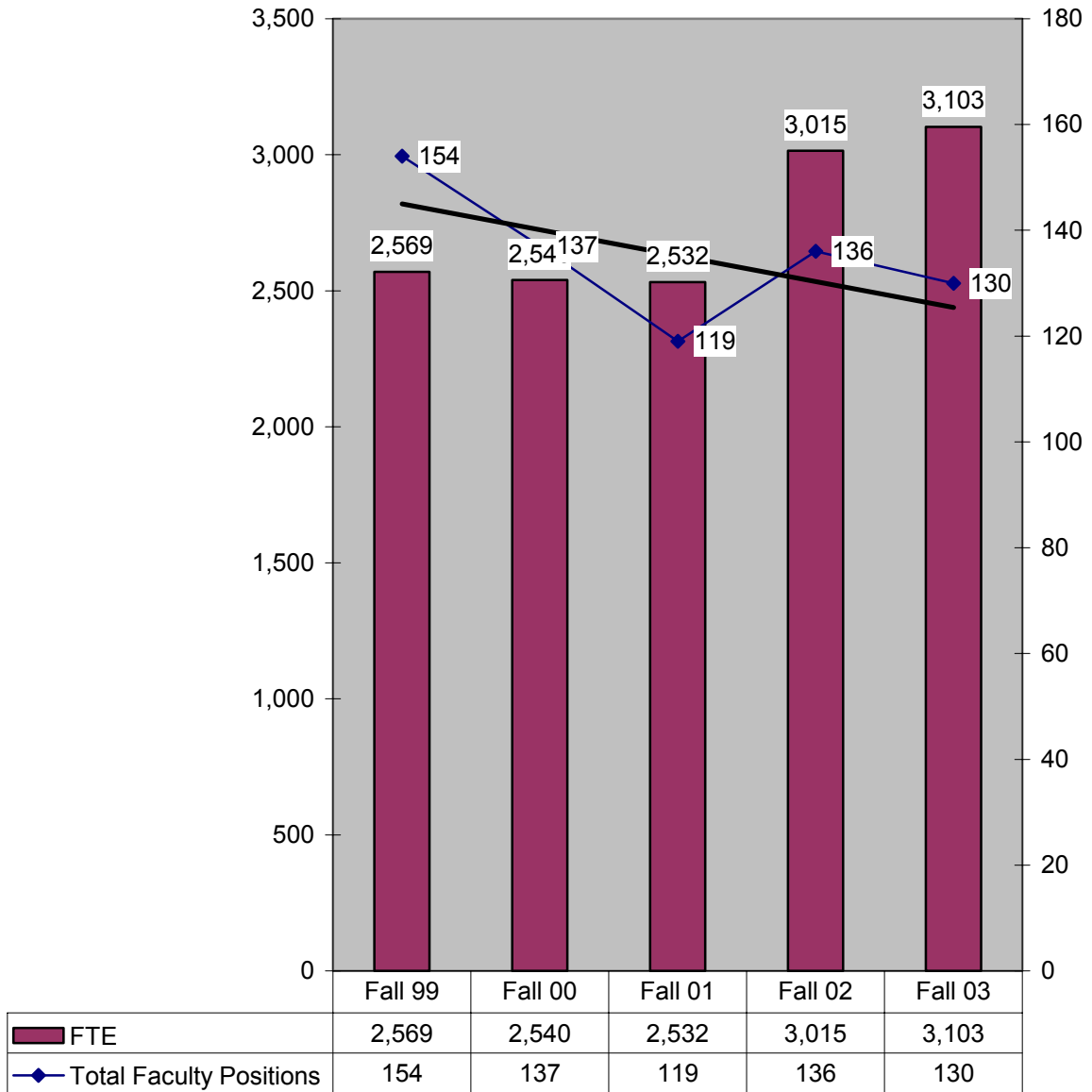
 **From Fall 02 to Fall 03, the portion of full-time faculty with a doctorate climbed by 4 percentage points.**


**Percentage of
Full-time Faculty by Gender
Fall 99-03**



From Fall 02 to Fall 03, the portion of full-time female faculty has grown by 1 percentage point.


**FTE Enrollment vs Faculty Positions
with Trendline
Fall 99-03**



 Although FTE enrollment grew by 3% from Fall 02 to Fall 03, the number of faculty positions declined by 4% during that same period.

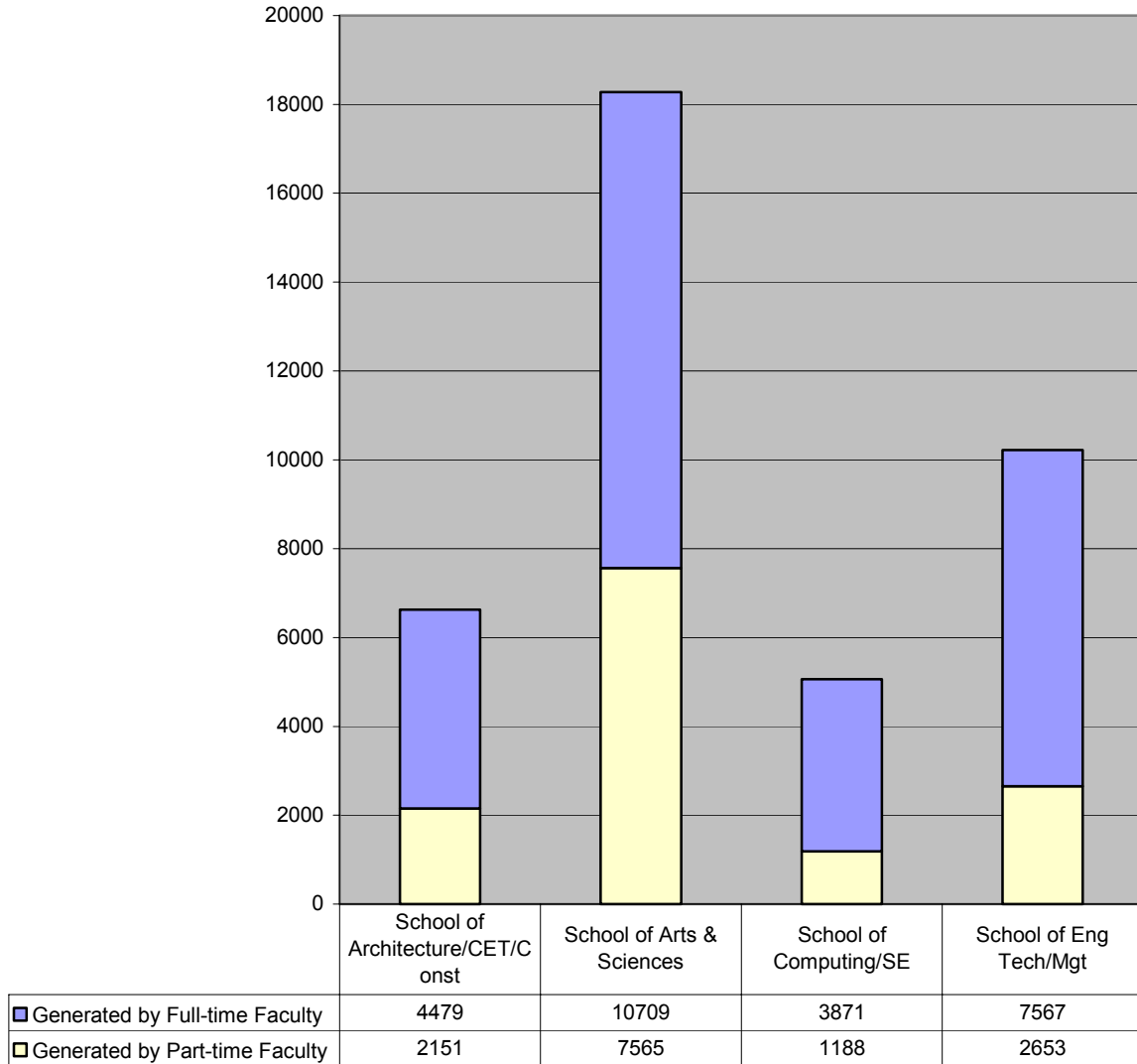
**Class Sections Taught by Faculty Type, School and Program
Fall 03**

	Fall 2003 Total Sections	Sections Taught by Full- time Faculty	Sections Taught by Part-time Faculty
School of Architecture/CET/Const	167	109	54
School of Arts & Sciences	277	177	100
School of Computing/SE	120	85	35
School of Eng Tech/Mgt	270	209	61
Total	834	580	250
Architecture	59	33	26
Biology, Chemistry and Physics	59	52	7
Civil Engineering Technology	50	34	16
Computer Science	73	49	24
Construction	58	42	12
Electrical and Computer Engineering Technology	108	91	17
Humanities and Technical Communication	103	67	36
Industrial Engineering Technology	65	51	14
Information Technology	26	17	9
Management	36	20	16
Mathematics	57	39	18
Mechanical Engineering Technology	61	47	14
Social and International Studies	58	19	39
Software Engineering	21	19	2
Total	834	580	250

 In Fall 03, the School of Arts & Sciences taught the greatest portion of sections with part-time faculty (36%).

 In Fall 03, the Social and International Studies Department taught the greatest portion of sections with part-time faculty (67%).


Student Credit Hours Generated by Faculty Type Fall 03




 In Fall 03, the School of Arts & Sciences offered the most class sections taught by part-time faculty.

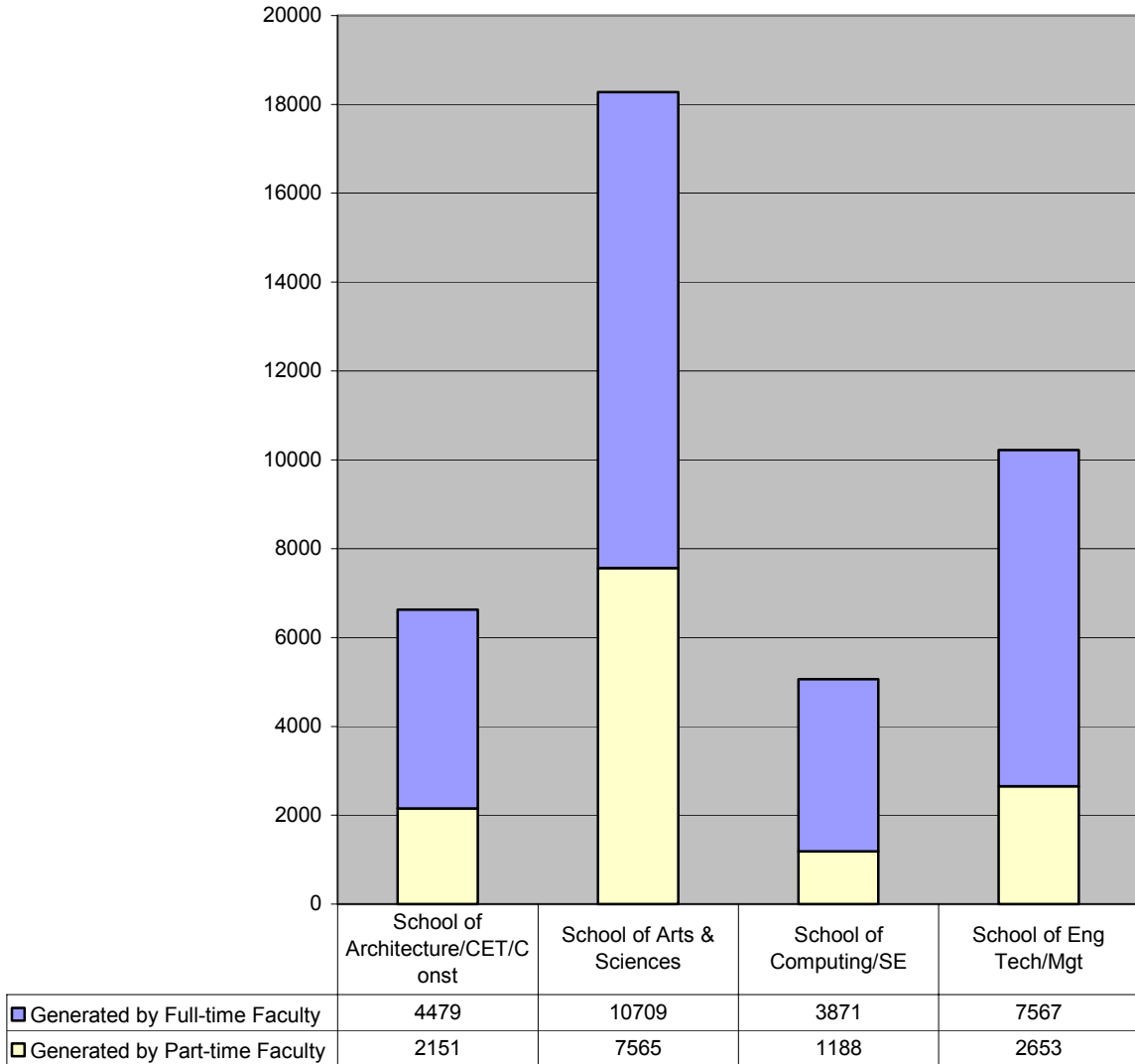
**Student Credit Hours Generated by Faculty Type, School and Program
Fall 02**

	Fall 2003 Total SCH	SCH Generated by Full- time Faculty	SCH Generated by Part- time Faculty
School of Architecture/CET/Const	8,581	4479	2151
School of Arts & Sciences	12,906	10709	7565
School of Computing/SE	4,627	3871	1188
School of Eng Tech/Mgt	14,069	7567	2653
Total	40,183	26626	13557
Architecture	2,861	1,798	1,063
Biology, Chemistry and Physics	2,740	2,405	335
Civil Engineering Technology	1,687	1,104	583
Computer Science	2,980	2,264	716
Construction	2,082	1,577	505
Electrical and Computer Engineering Technology	3,557	3,029	528
Humanities and Technical Communication	5,545	3,218	2,327
Industrial Engineering Technology	1,923	1,422	501
Information Technology	1,062	690	372
Management	2,793	1,566	1,227
Mathematics	5,380	3,514	1,866
Mechanical Engineering Technology	1,947	1,550	397
Social and International Studies	4,609	1,572	3,037
Software Engineering	1,017	917	100
Total	40,183	26,626	13,557

 In Fall 03, the School of Eng Tech/Mgt generated the smallest portion of student credit hours taught by part-time faculty (19%).

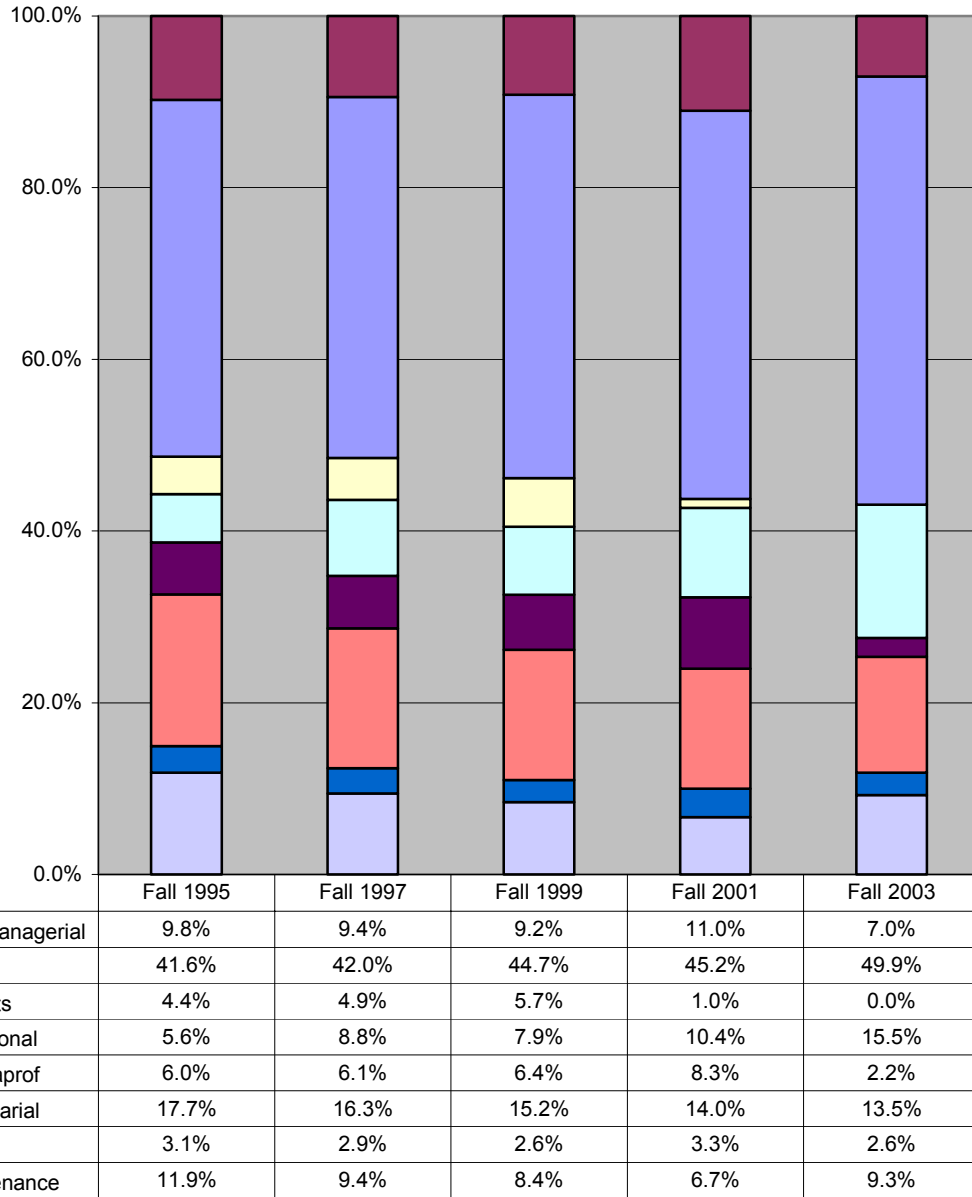
 In Fall 03, the Social and International Studies Department generated the greatest portion of student credit hours taught by part-time faculty (66%).

Student Credit Hours Generated by Faculty Type Fall 03




 From Fall 02 to Fall 03, the School of Arts & Sciences experienced the greatest increase in portion of student credit hours taught by part-time faculty (125%).

**Employees by EEO Category
Fall 95-03**



 From Fall 95 to Fall 03, the Other Professional category grew the most (185%).

 From Fall 95 to Fall 03, other than the Grad Assistant category, the Technical/Paraprofessional category declined the most (-62%).