

### Buildings and Contents Values FY04

Building	Year Built	Sq Ft	Building Value	Contents Value	Total Value
A- Wilson Student Center	1977	86,243	\$12,633,559	\$1,650,000	\$14,283,559
B- Administration Bldg	1961	16,620	\$2,991,600	\$338,129	\$3,329,729
C- Lawrence Johnson Library	1966	58,175	\$11,053,250	\$1,250,000	\$12,303,250
D- Classroom Bldg.	1961	28,595	\$5,433,050	\$224,000	\$5,657,050
E- Crawford Lab Bldg.	1961	31,158	\$5,920,020	\$1,000,000	\$6,920,020
F- Continuing Education	1983	4,743	\$118,575	\$150,000	\$268,575
G- Electrical & Comp Eng Tech	1961	35,036	\$6,656,840	\$665,000	\$7,321,840
H- Burruss Academic Bldg.	1984	50,500	\$9,595,000	\$2,500,000	\$12,095,000
I- Old Architecture Bldg.	1961	35,027	\$6,655,130	\$50,000	\$6,705,130
J- Atrium Bldg.	2000	103,608	\$13,500,000	\$1,350,000	\$14,850,000
K- Clarence Arnston MET Bldg.	1961	34,677	\$6,588,630	\$1,682,000	\$8,270,630
L- GYSTC/NASA Bldg.s	1996	6,090	\$200,000	\$60,000	\$260,000
M- Claire Harris ATET	1988	31,673	\$6,017,870	\$522,000	\$6,539,870
N- School of Architecture	2002	101,793	\$12,841,000	\$1,050,000	\$13,891,000
S- Howell Hall*	1966	57,722	\$6,000,120	\$525,000	\$6,525,120
V- Norton Hall*	1964	47,146	\$5,000,000	\$535,000	\$5,535,000
CY-Court Yard Apts.*	2004	184,317	\$8,982,781	\$683,848	\$9,666,629
EP- Facilities Administration	2001	5,626	\$196,910	\$170,000	\$366,910
EQ- Cart/Dead File Storage	2001	1,267	\$38,010	\$100,000	\$138,010
ER- Small Vehicle Shed	2001	3,000	\$90,000	\$150,000	\$240,000
ES- Facilities Grounds Bldg.	2001	2,520	\$88,200	\$130,000	\$218,200
ET- Hazardious Mat. Storage	2002	236	\$12,000	\$0	\$12,000
EU- Facilities Large Vehicle Shed	2002	1,548	\$46,440	\$170,000	\$216,440
EV- Facilities Maintenance Bldg.	2001	12,156	\$425,460	\$225,000	\$650,460
EX- Facilities Central Receiving	1985	7,200	\$216,000	\$200,000	\$416,000
NC- Rec. & Wellness Center	1996	35,948	\$6,830,120	\$373,000	\$7,203,120
SJ- Civil Engineering Tech Bldg.	1977	13,448	\$2,555,120	\$350,000	\$2,905,120
SK- Civil Eng. Testing Lab.	1993	1,800	\$342,000	\$100,000	\$442,000
SL- CET Modular Project Bldg.s	1984	1,040	\$20,000	\$2,000	\$22,000
SM- Wilder Communica. Bldg.	1984	4,010	\$240,350	\$300,000	\$540,350
SP- SPSU Gymnasium	1966	29,182	\$5,544,580	\$80,000	\$5,624,580
UC- University Commons Apts.*	2000	96,480	\$4,865,826	\$423,000	\$5,288,826
WA- Facilities Grounds Bldg.	1995	720	\$25,200	\$25,000	\$50,200
WB- Concession/Restroom Bldg.	1995	864	\$29,610	\$0	\$29,610
WE- ATET Modular Storage	1984	470	\$16,450	\$2,000	\$18,450
WI- Modular Training Center	1994	576	\$14,400	\$0	\$14,400
SP1, 2, 3- Baseball Shed/Storage	1966	594	\$20,790	\$10,000	\$30,790
<b>Total</b>			<b>\$141,804,891</b>	<b>\$17,044,977</b>	<b>\$158,849,868</b>

\* Owned by LLC Foundation

**Lawrence V. Johnson Library  
FY94-02**

	FY94	FY96	FY98	FY00	FY02
<b>Holdings</b>					
<b>Books/Other Materials</b>	109,427	114,207	114,256	117,963	119,780
<b>Periodicals/Newspapers</b>	1,272	1,314	1,415	1,320	1,256
<b>Microforms</b>	48,390	52,374	55,686	56,619	57,144
<b>Audiovisual materials</b>	6,180	6,108	62	60	82
<b>Computer Files</b>	5	39	68	8	9
<b>Volumes Added During Year</b>	5,951	3,010	4,258	2,964	6,108
<b>Services</b>					
<b>Circulation Transactions</b>					
<b>General Collection</b>	32,857	20,750	31,225	17,837	15,542
<b>Reserve Collection</b>	14,577	8,723	12,380	11184**	7,887
<b>Document Delivery/Interlib. Loan</b>					
<b>Provided to other libraries</b>	1,576	569	1,292	1,076	1,385
<b>Received from other libraries</b>	1,326	935	617	345	451
<b>Information service to groups</b>					
<b>Number of presentations</b>	36	62	44	36	13
<b>Number of persons served</b>	750	1,195	876	600	257
<b>Public Service Hours/Week</b>	77	80	80	80	80
<b>Gate Count/Week</b>		4,300	4,500	***	2,802
<b>Reference Transactions/Week</b>	4075*	50	90	53	17
<b>*included computer searches</b>					
<b>**now using electronic reserves</b>					
<b>***gate count equipment broken</b>					



There was a 3% increase in the number of volumes added, a 53% decrease in General Collection circulation transactions, and a 46% decrease in Reserve Collection circulation transactions from FY 94 to FY 02.

Source: IPEDS Academic Library Survey (collected biannually)

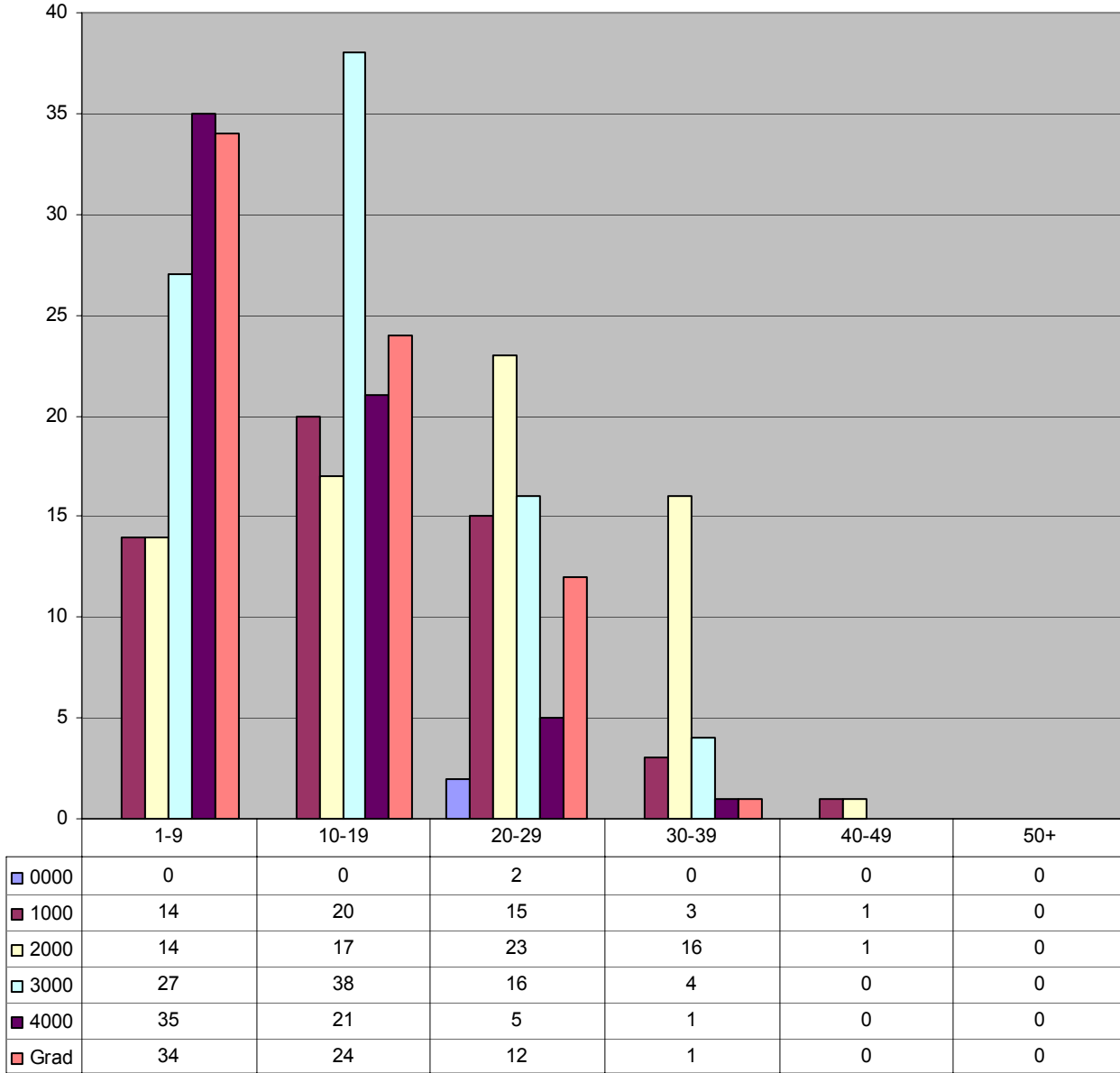
**Class Size by Level  
AY 03**

Summer 2003	1-9	10-19	20-29	30-39	40-49	50+	Class Count	Student Count	Class Average
<b>Class Level</b>									
0000	0	0	2	0	0	0	2	54	27
1000	14	20	15	3	1	0	53	838	16
2000	14	17	23	16	1	0	71	1,454	20
3000	27	38	16	4	0	0	85	1,219	14
4000	35	21	5	1	0	0	62	561	9
Grad	34	24	12	1	0	0	71	721	10
<b>Total</b>	124	120	73	25	2	0	344	4,847	
<b>Fall 2003</b>									
<b>Class Level</b>									
0000	0	1	4	2	0	0	7	172	25
1000	18	51	82	44	5	6	206	4,847	24
2000	7	55	69	46	8	3	188	4,712	25
3000	46	81	36	20	0	0	183	3,026	17
4000	55	57	18	9	1	0	140	1,856	13
Grad	44	37	24	1	1	0	107	1,368	13
<b>Total</b>	170	282	233	122	15	9	831	15,981	
<b>Spring 2004</b>									
<b>Class Level</b>									
0000	0	1	2	3	0	0	6	156	26
1000	25	51	67	40	7	0	190	4,129	22
2000	8	49	62	47	13	4	183	4,660	25
3000	26	75	33	14	5	3	156	2,855	18
4000	46	60	25	8	2	0	141	1,976	14
Grad	51	44	18	4	0	0	117	1,350	11
<b>Total</b>	156	280	207	116	27	7	793	15,126	12
<b>Total AY 02</b>	415	581	428	250	26	8	1,708		
<b>Total AY 03</b>	450	682	513	263	44	16	1,968		
<b>% Change</b>	8%	17%	20%	5%	69%	100%	15%		



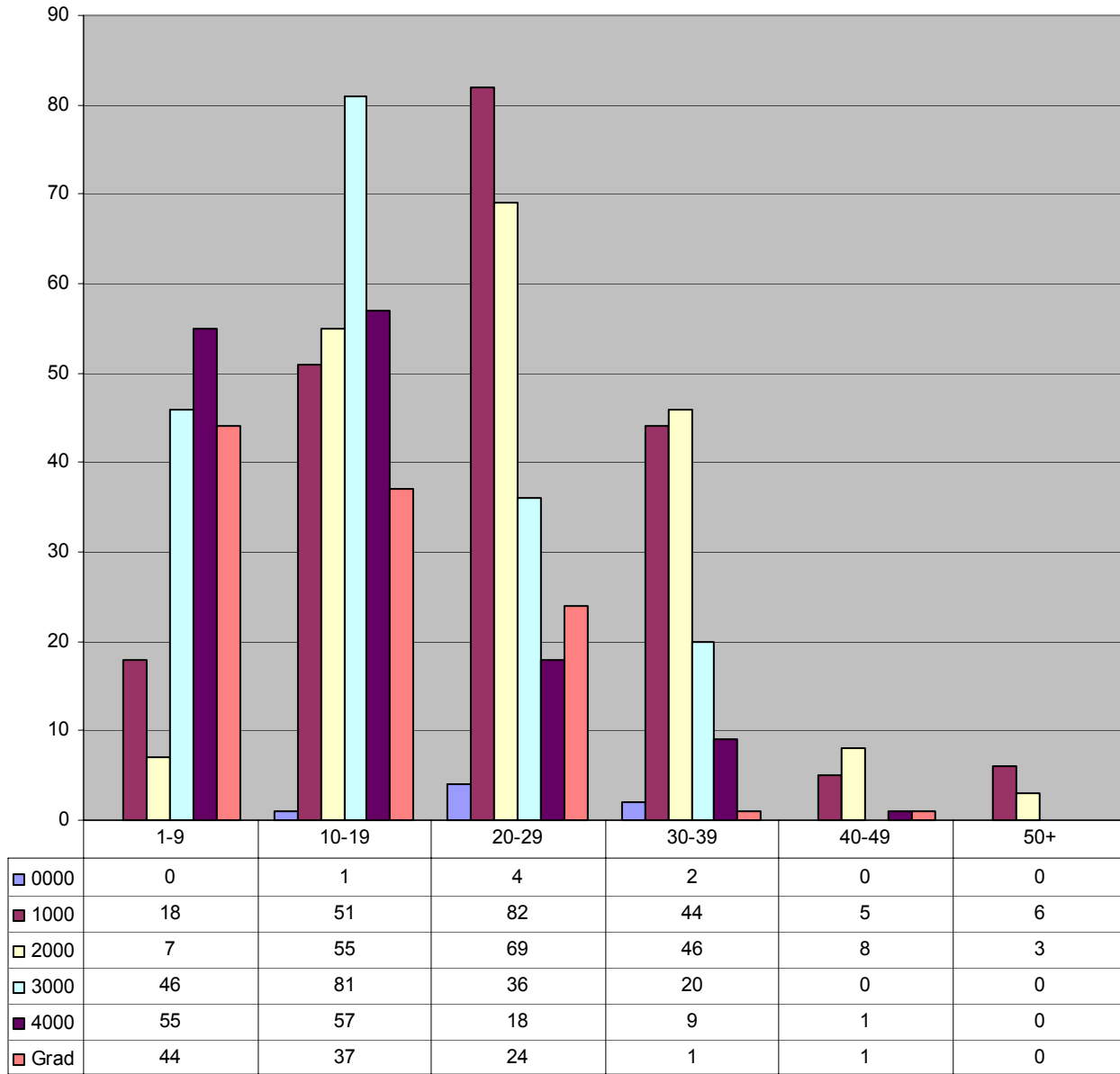
From AY02 to AY03 there was a 15% increase in the total number of classes offered.

**Class Level by Class Size  
Summer 2003**



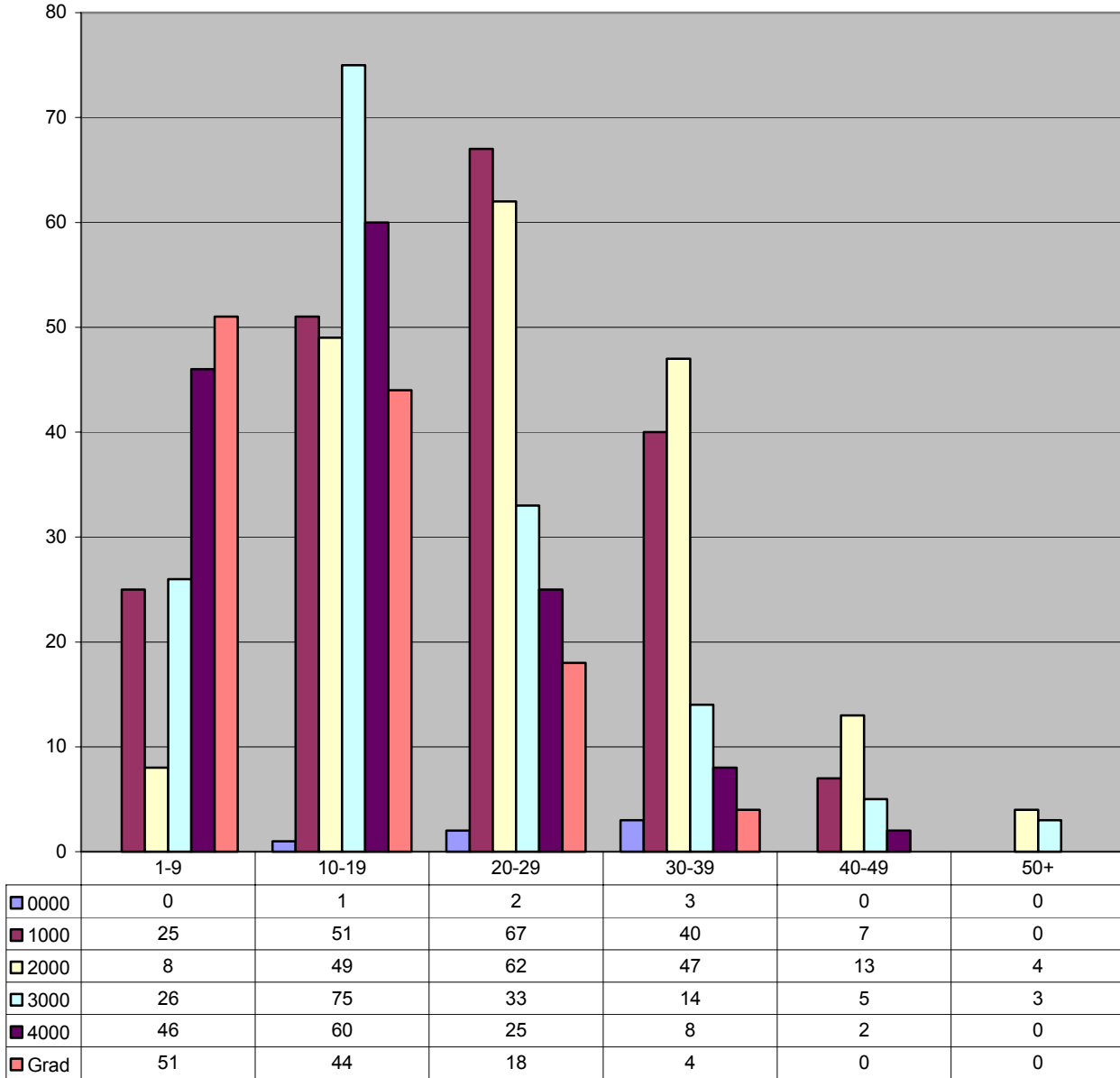
**During Summer 03, the greatest number of courses was taught at the 3000 level (85) and had 10-19 students enrolled.**

**Class Level by Class Size  
Fall 2003**



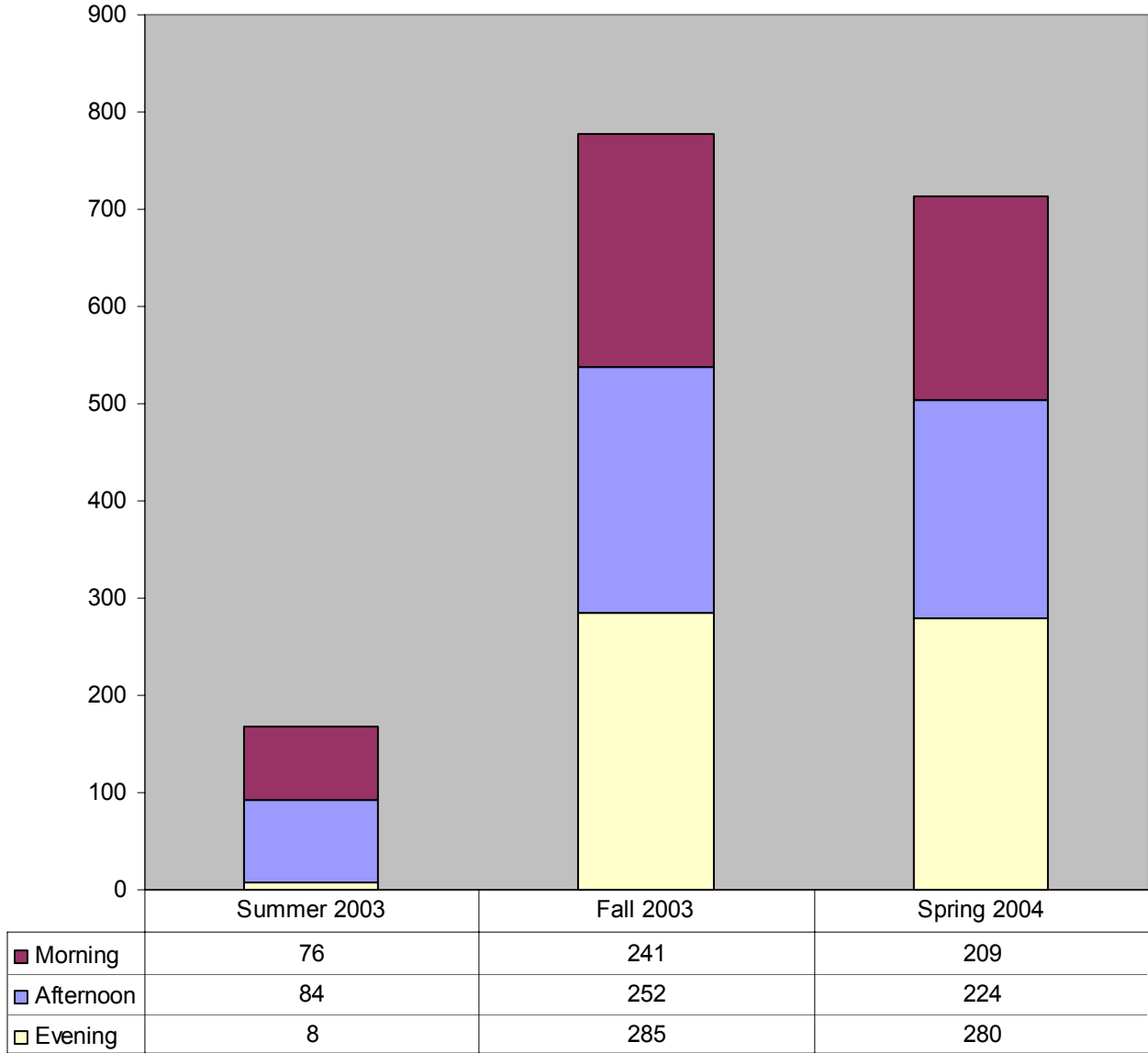
**During Fall 03, the greatest number of courses was taught at the 1000 level (206) and had 20-29 students enrolled.**

**Class Level by Class Size  
Spring 2004**



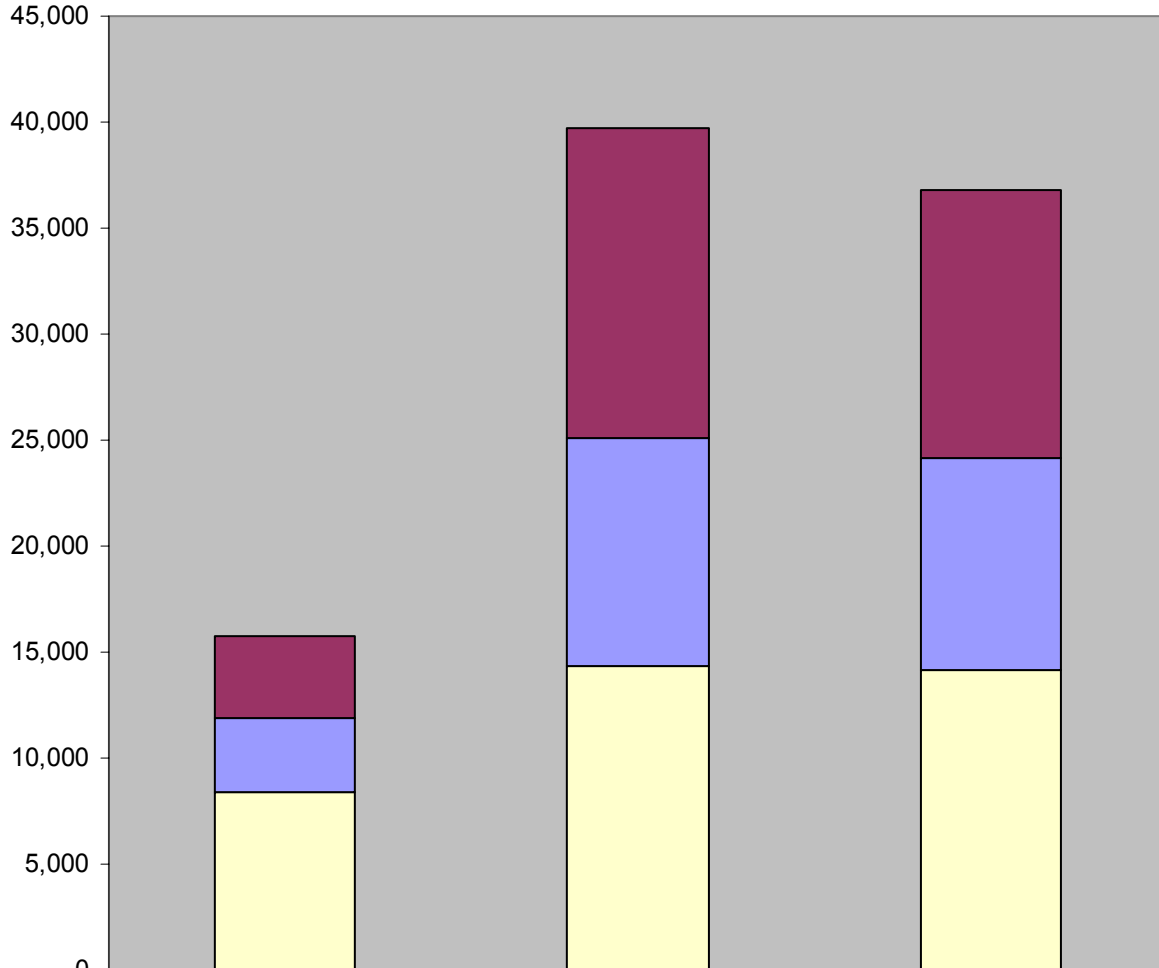
**During Spring 04, the greatest number of courses was taught at the 1000 level (190) and had 20-29 students enrolled.**

**Class Sections by Class Time  
Monday - Friday  
AY 03**




**During AY 03-04, the largest percentage of Monday-Friday classes commenced between 6-7:55pm (40% in summer, 30% in fall and 35% in spring.)**

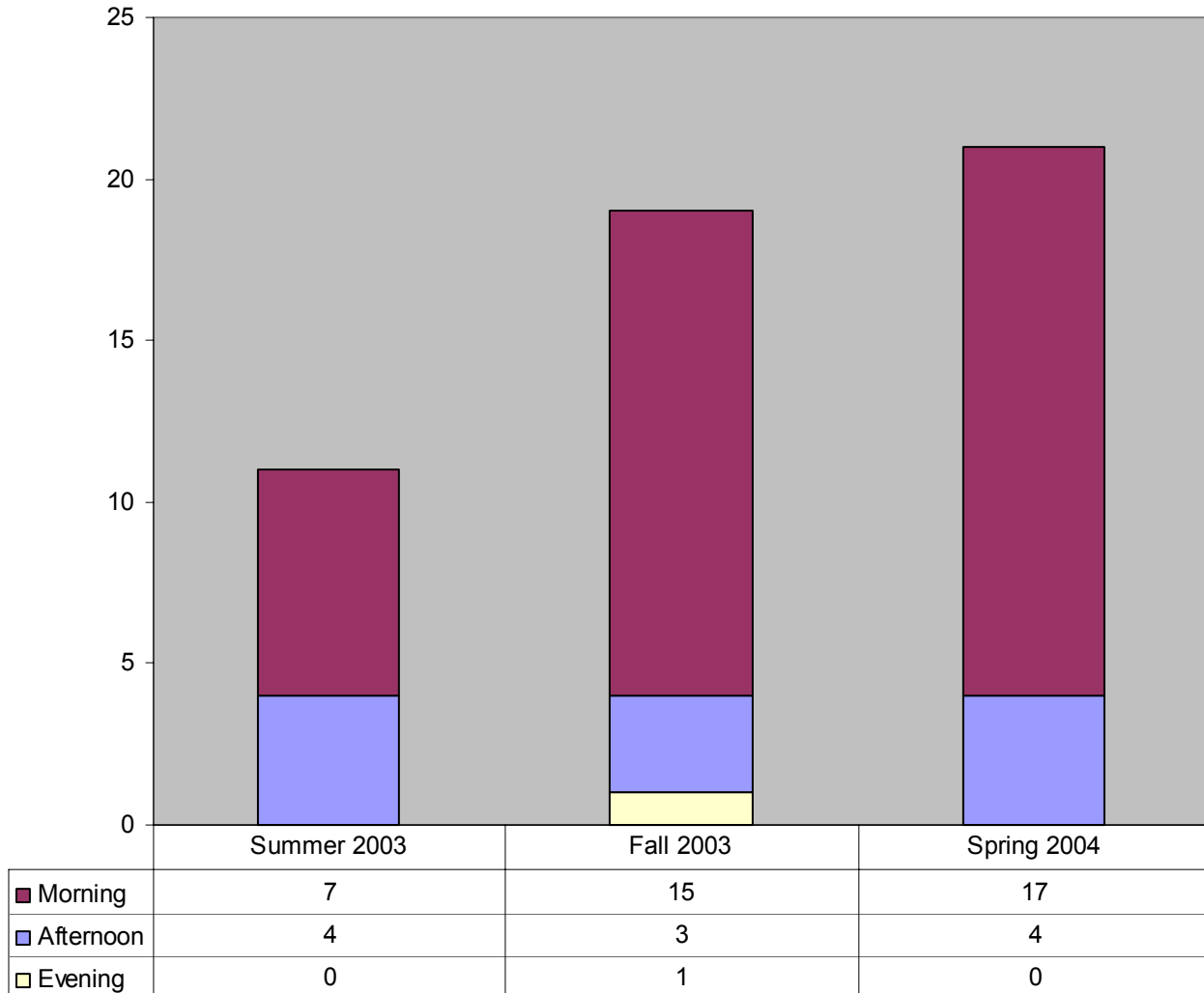
**Student Credit Hours by Class Time  
Monday - Friday  
AY 03**



	Summer 2003	Fall 2003	Spring 2004
■ Morning	3,895	14,618	12,668
■ Afternoon	3,519	10,798	9,926
■ Evening	8,354	14,307	14,194

 **During AY 03-04, the largest percentage of student credit hours was generated in Monday-Friday classes that commenced between 6-7:55pm (24% in summer, 30% in fall and 33% in spring).**

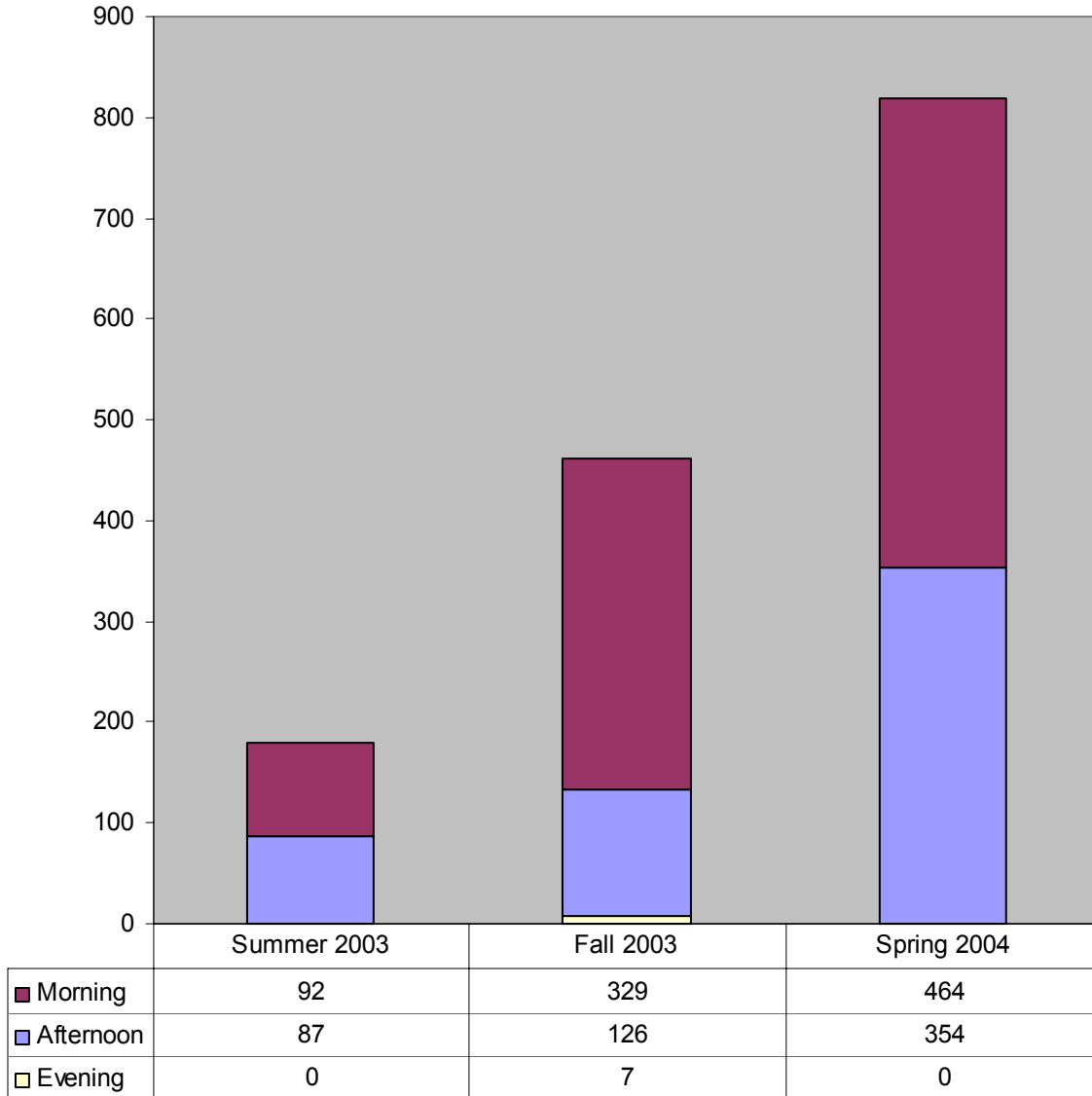
**Class Sections by Class Time  
Saturday  
AY 03**



 **During Fall 03 and Spring 04, the largest percentage of Saturday classes commenced between 9-10:55am (58% in fall and 48% in spring).**

 **During Summer 03, the largest percentage of Saturday classes commenced between 1-1:55pm (36%).**

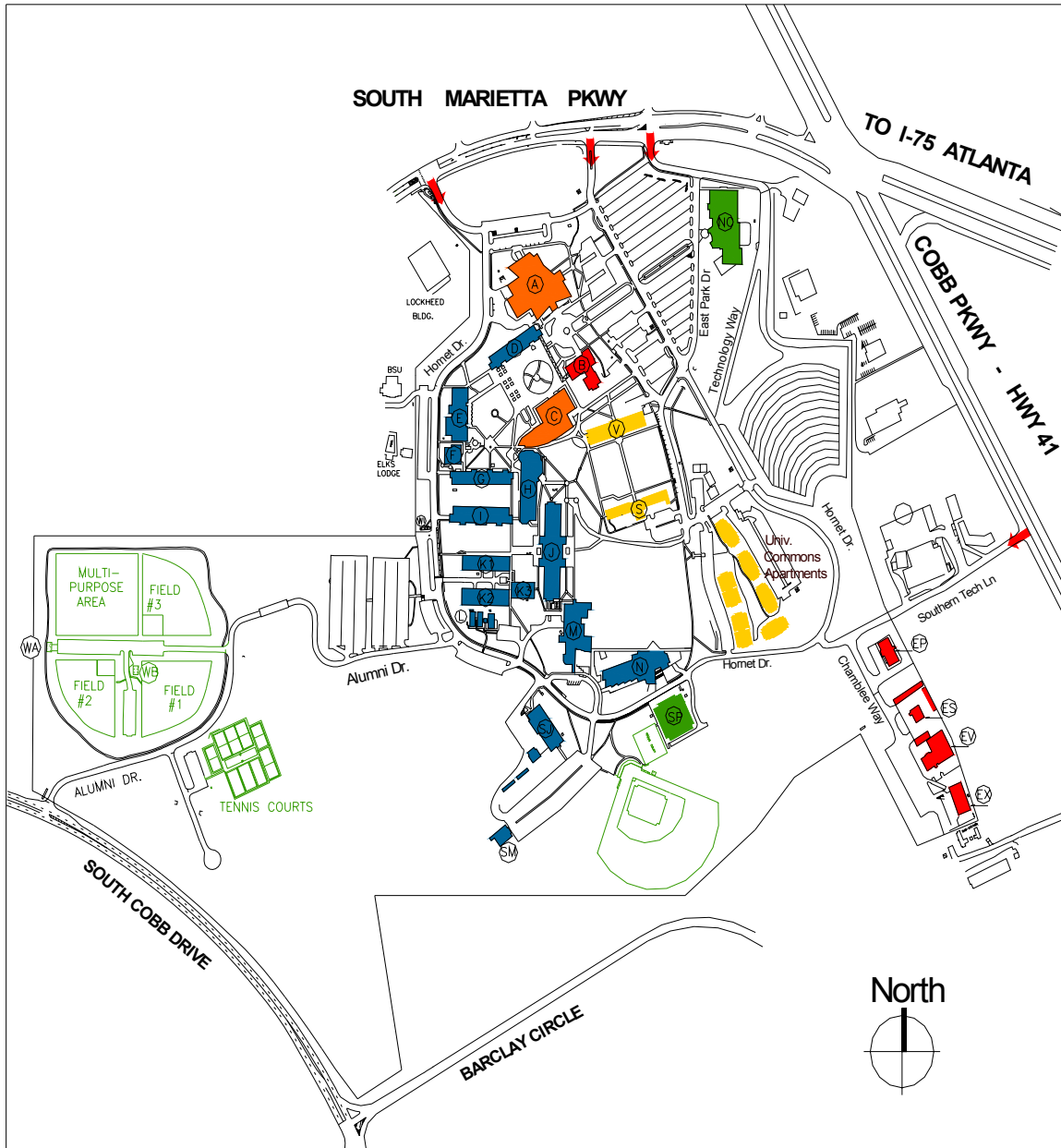
**Student Credit Hours by Class Time  
Saturday  
AY 03**



 During Fall 03 and Spring 04, the largest percentage of student credit hours was generated between 9-10:55am (61% in fall and 51% in spring).

 During Summer 03, the largest percentage of student credit hours was generated between 1-1:55pm (49%).

### Campus Map



**Bldg Letter**

- A
- B
- C
- D
- E
- EP
- ES
- EV
- EX
- F
- G
- H
- I
- J
- K

**Bldg Name**

- Wilson Student Center
- Administration Building
- Johnson Library
- Classroom Building
- Crawford Laboratory
- Facilities Admin Bldg
- Grounds/Vehicle Shop
- Maintenance Shop
- Central Receiving Bldg
- Continuing Education
- Electrical Eng Tech Bldg
- Academic Building
- Architecture Bldg
- Atrium Building
- Arnston Mechanical Bldg

**Bldg Letter**

- L
- M
- NC
- N
- S
- SJ
- SM
- SP
- V
- WA
- WB

**Bldg Name**

- NASA/GYSTC
- Apparel/Textile Center
- Recreation/Wellness Ctr
- New Architecture Bldg
- Howell Hall
- Civil Eng Tech Bldg
- Wilder Commun Center
- Gymnasium
- Norton Hall
- Storage
- Concess/Restrooms