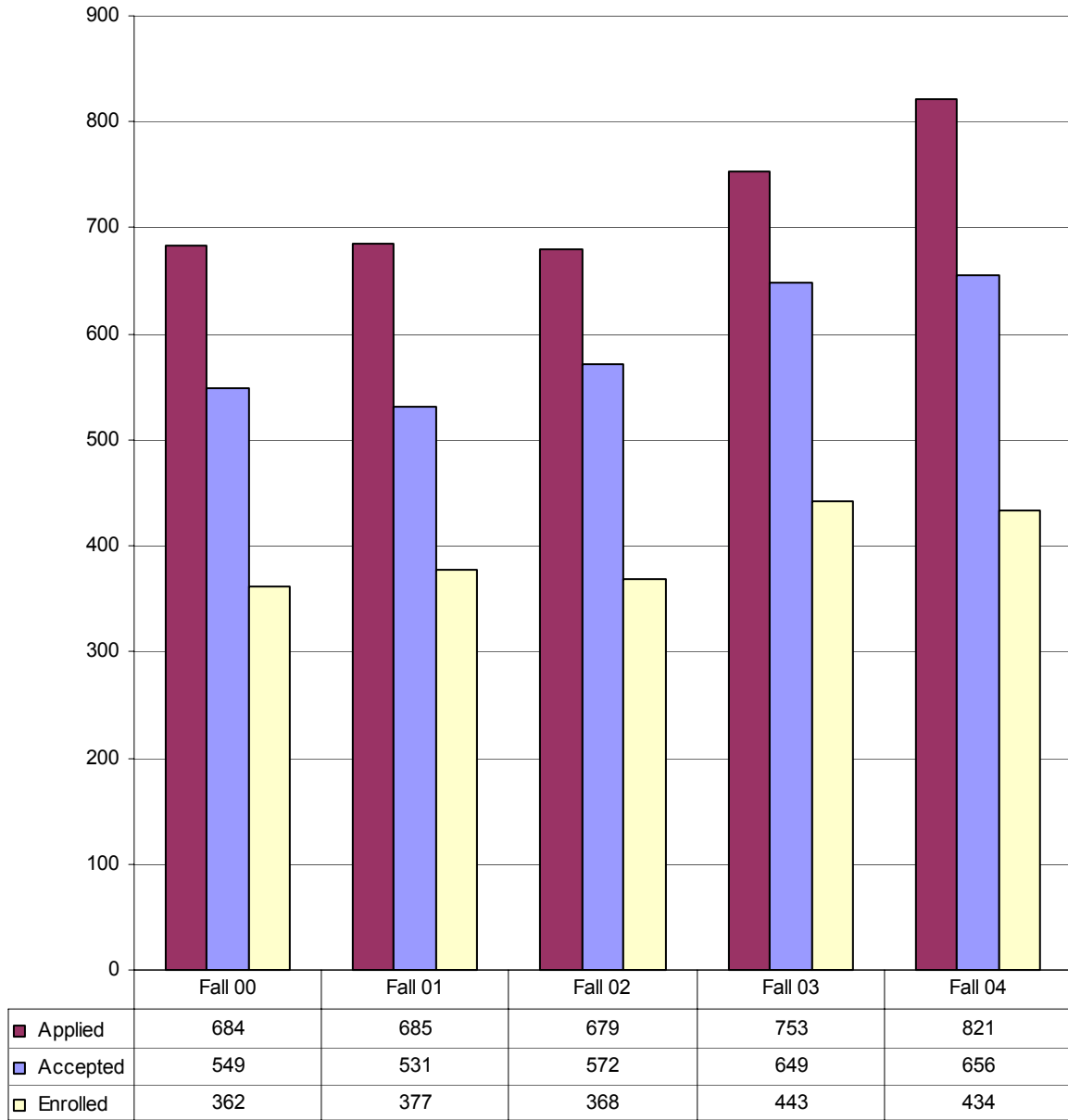


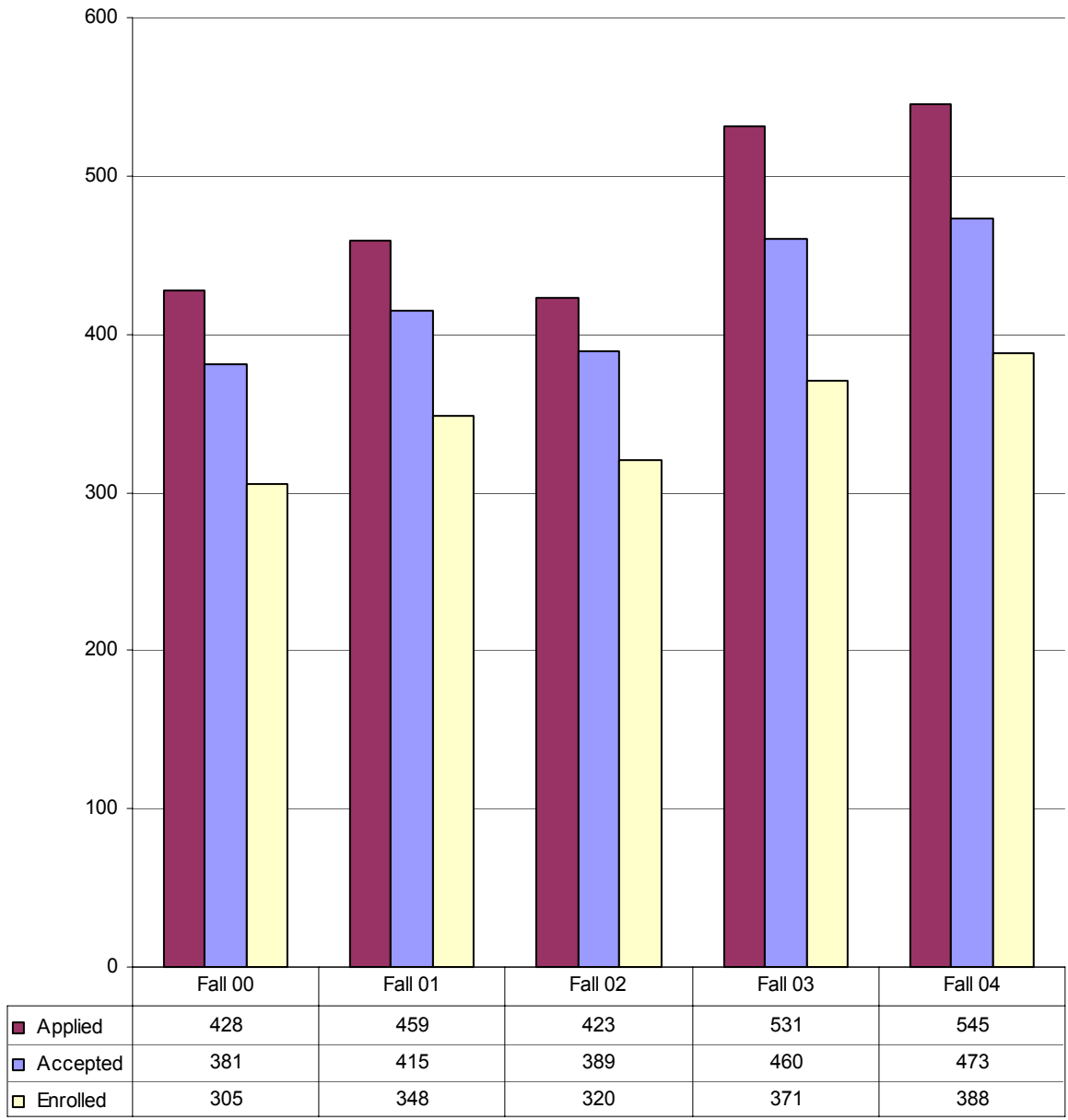
**Total New Freshman Yield
Fall 00-04**



 **From Fall 03 to Fall 04, the conversion of freshmen from applied to enrolled decreased by 6 percentage points.**

Source: SPSU Banner Report WSAR0100

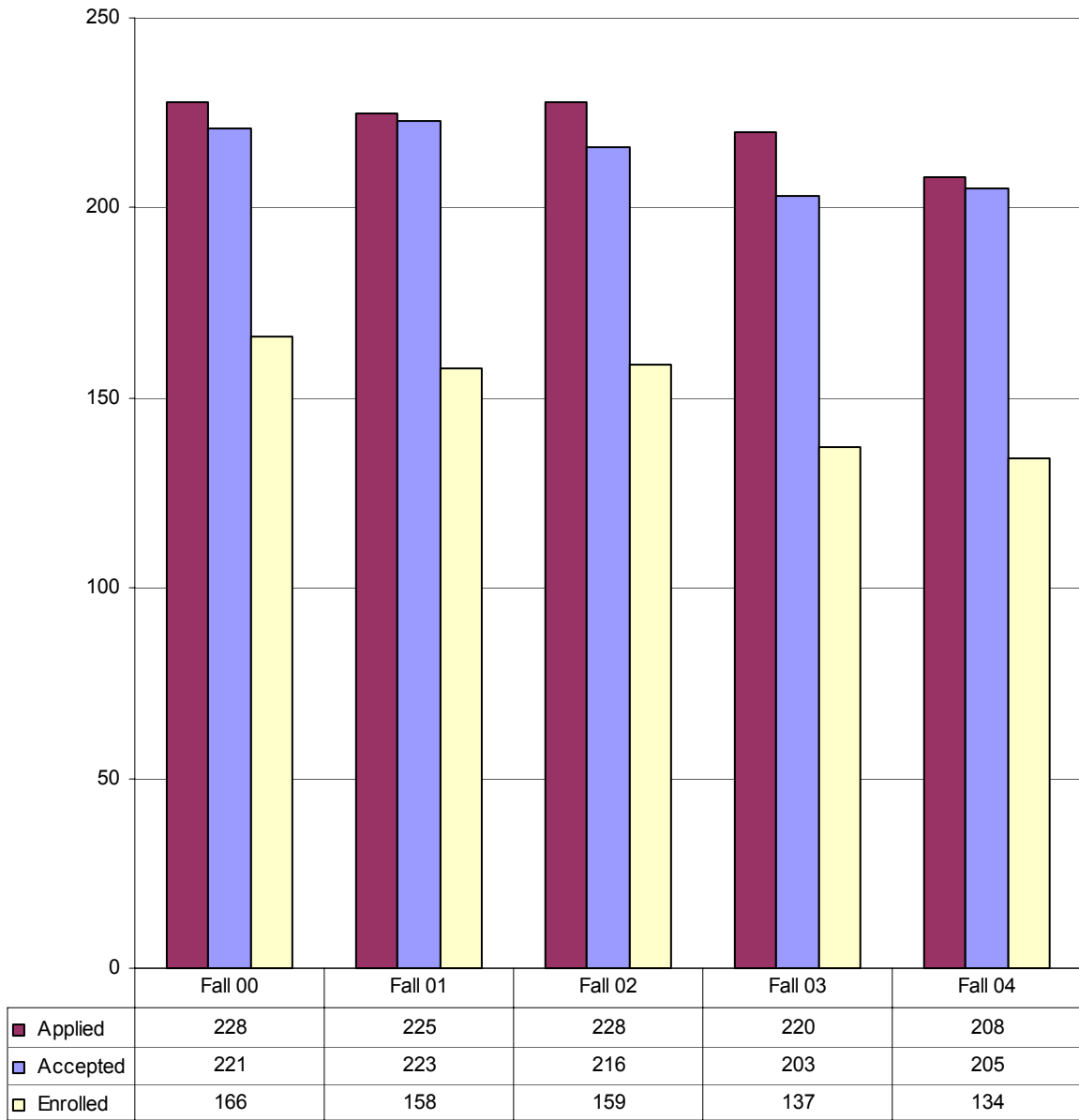
**Total New Transfer Yield
Fall 00-04**



 From Fall 03 to Fall 04, the conversion of transfers from applied to enrolled increased by 1 percentage point.

Source: SPSU Banner Report WSAR0100

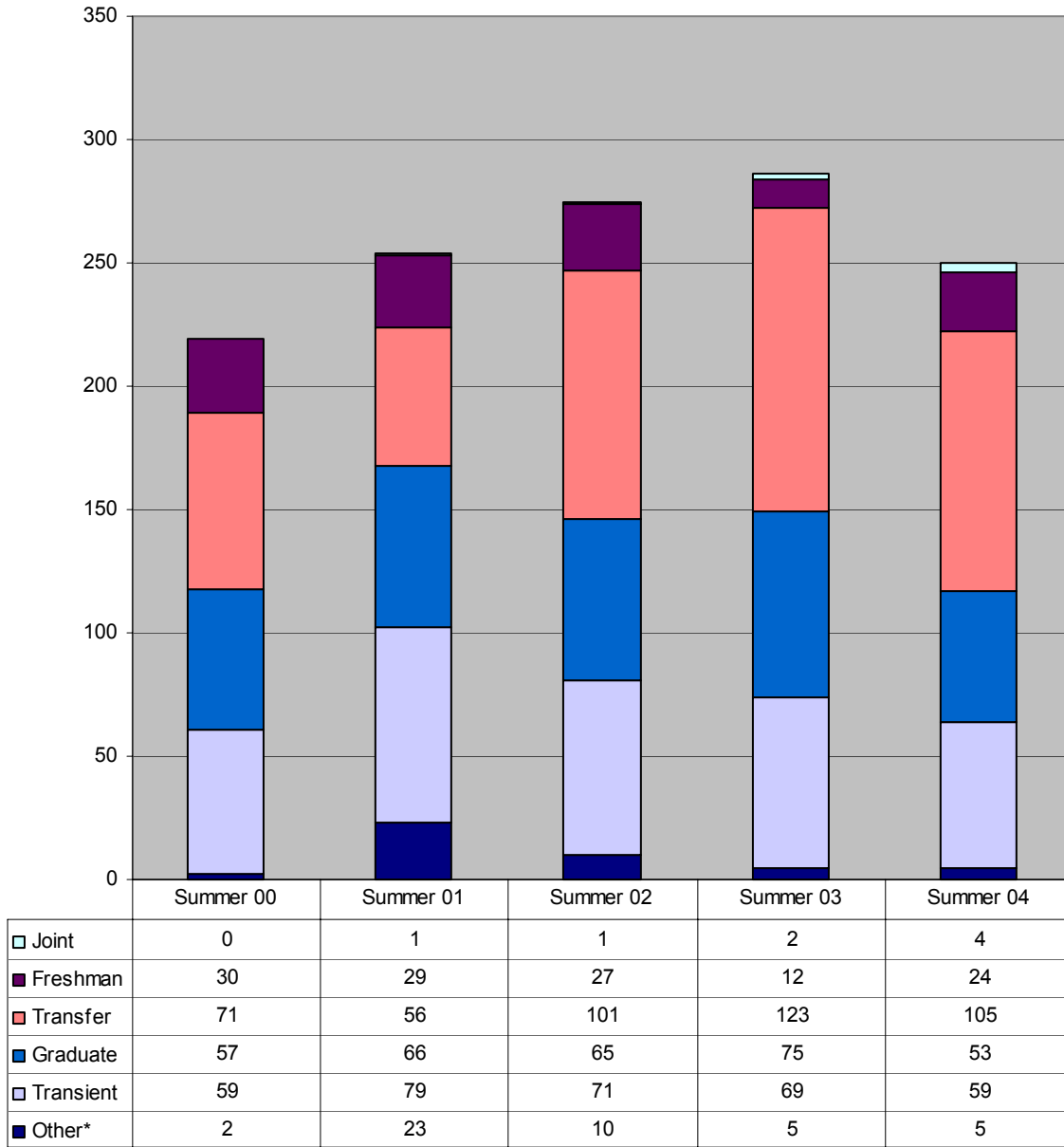
**Total New Graduate Yield
Fall 00-04**



From Fall 03 to Fall 04, the conversion of graduate students from applied to enrolled increased by 2 percentage points.

Source: SPSU Banner Report WSAR0100

**New Enrollment by Student Type
Summer 00-04**

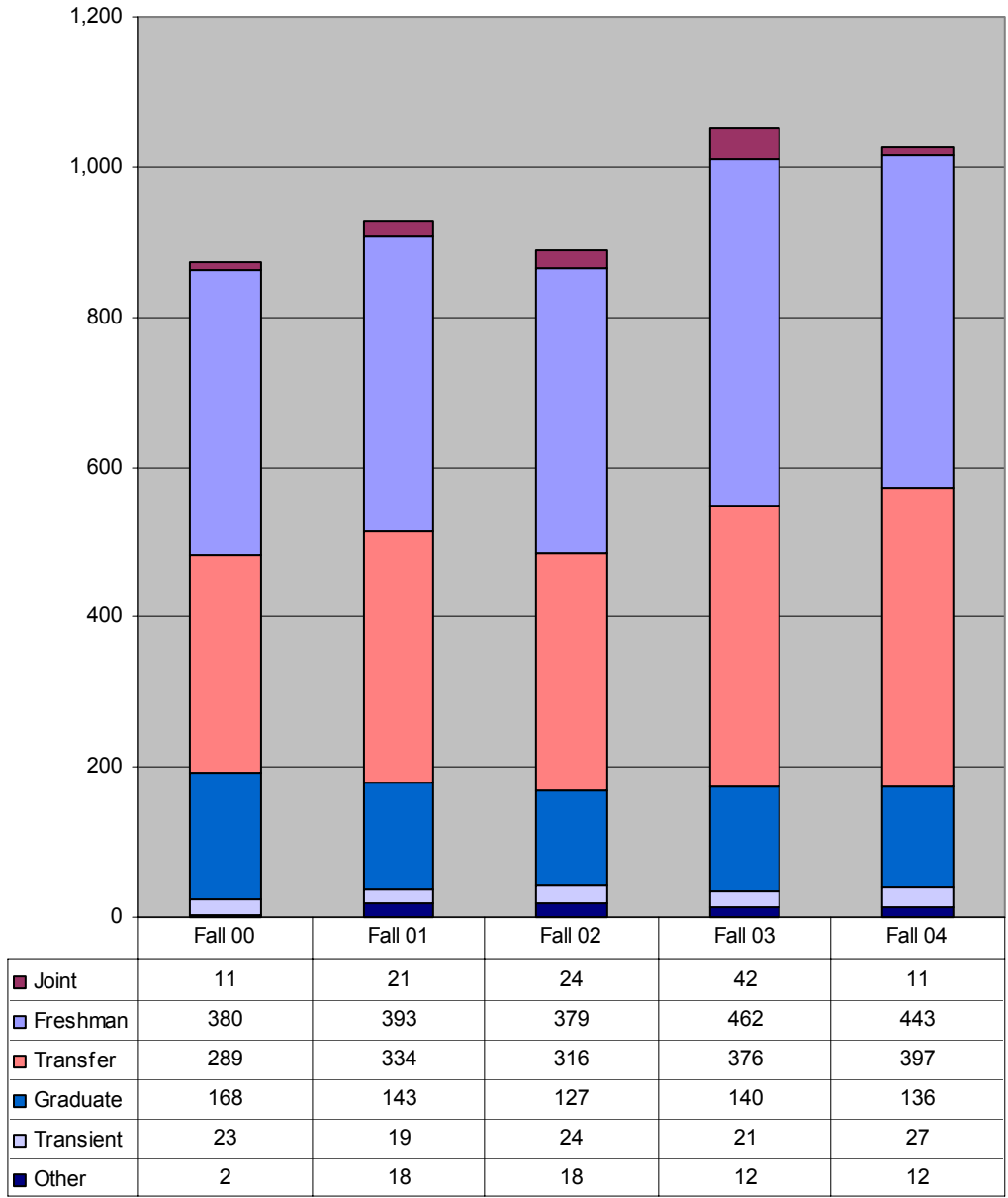


"Other" includes students who already have a bachelors degree but are enrolled in ug courses, and auditors.

 **New student enrollment has increased by 14% over the past five Summer terms.**

Source: USG SIRS Summer Enrollment Report

**New Enrollment by Student Type
Fall 00-04**

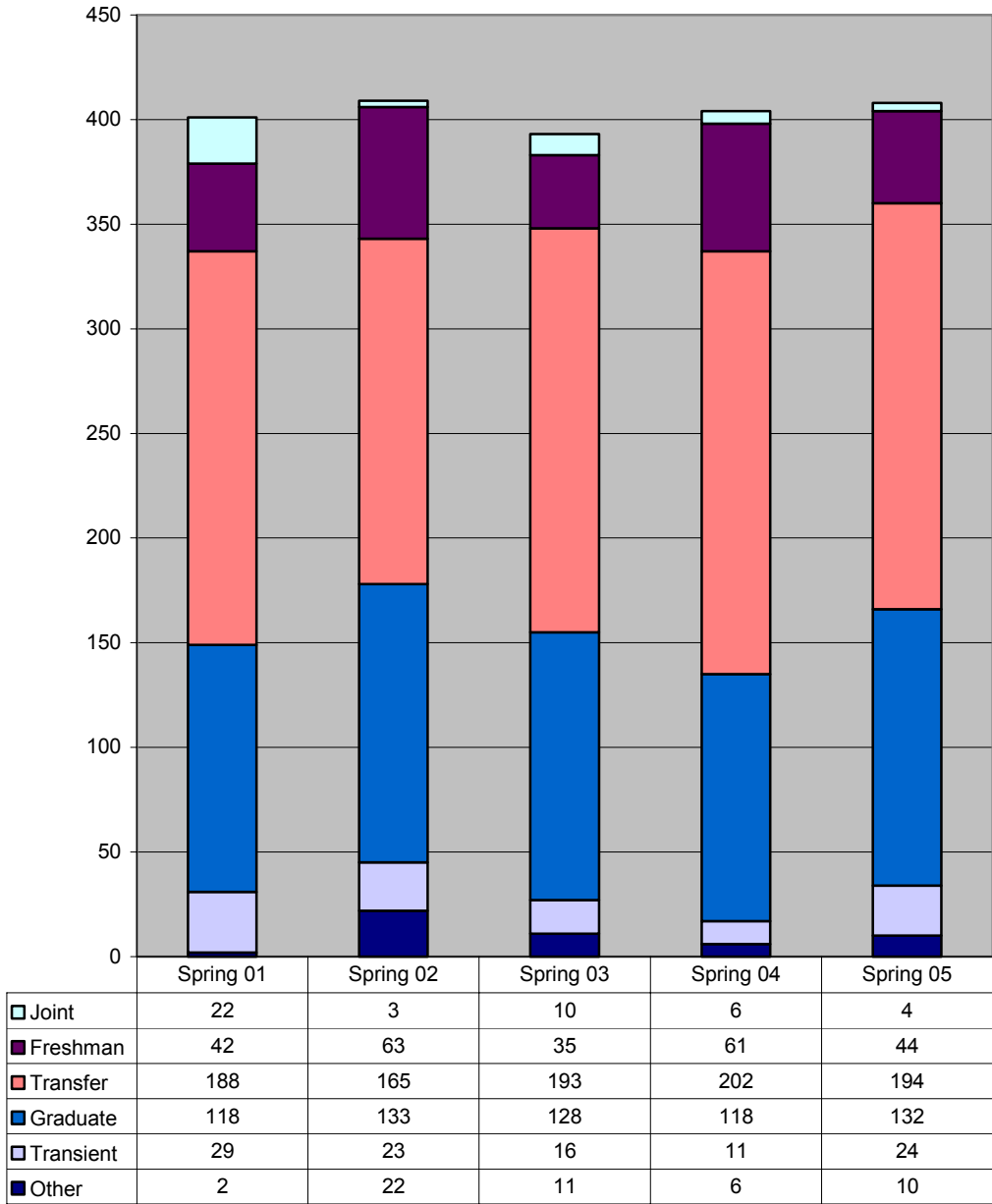


"Other" includes students who already have a bachelors degree but are enrolled in ug courses, and auditors.

 **New student enrollment has increased by 18% over the past five Fall terms.**

Source: USG SIRS Fall Enrollment Report

New Enrollment by Student Type Spring 01-05

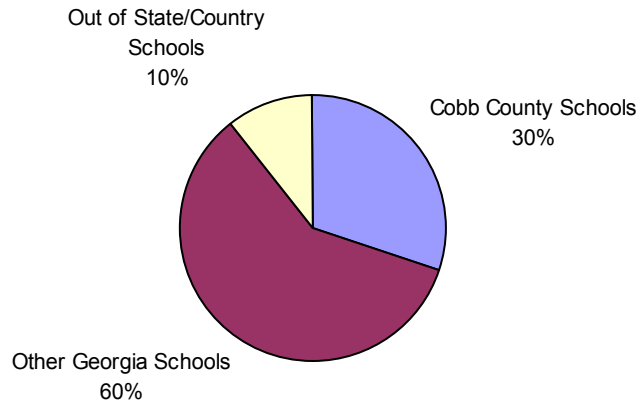


"Other" includes students who already have a bachelors degree but are enrolled in ug courses, and auditors.

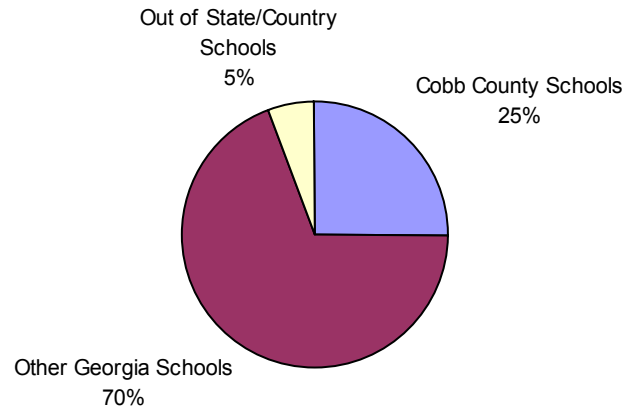
 **New student enrollment has increased by 2% over the past five Spring terms.**

Source: USG SIRS Spring Enrollment Report

New Freshmen by High School Attended AY 00



New Freshmen by High School Attended AY 04



The proportion of new freshman students from Cobb County declined by 5 percentage points over the past five academic years.

New Freshmen by High School Attended*
AY 00 – AY 04
 Sorted on AY 04

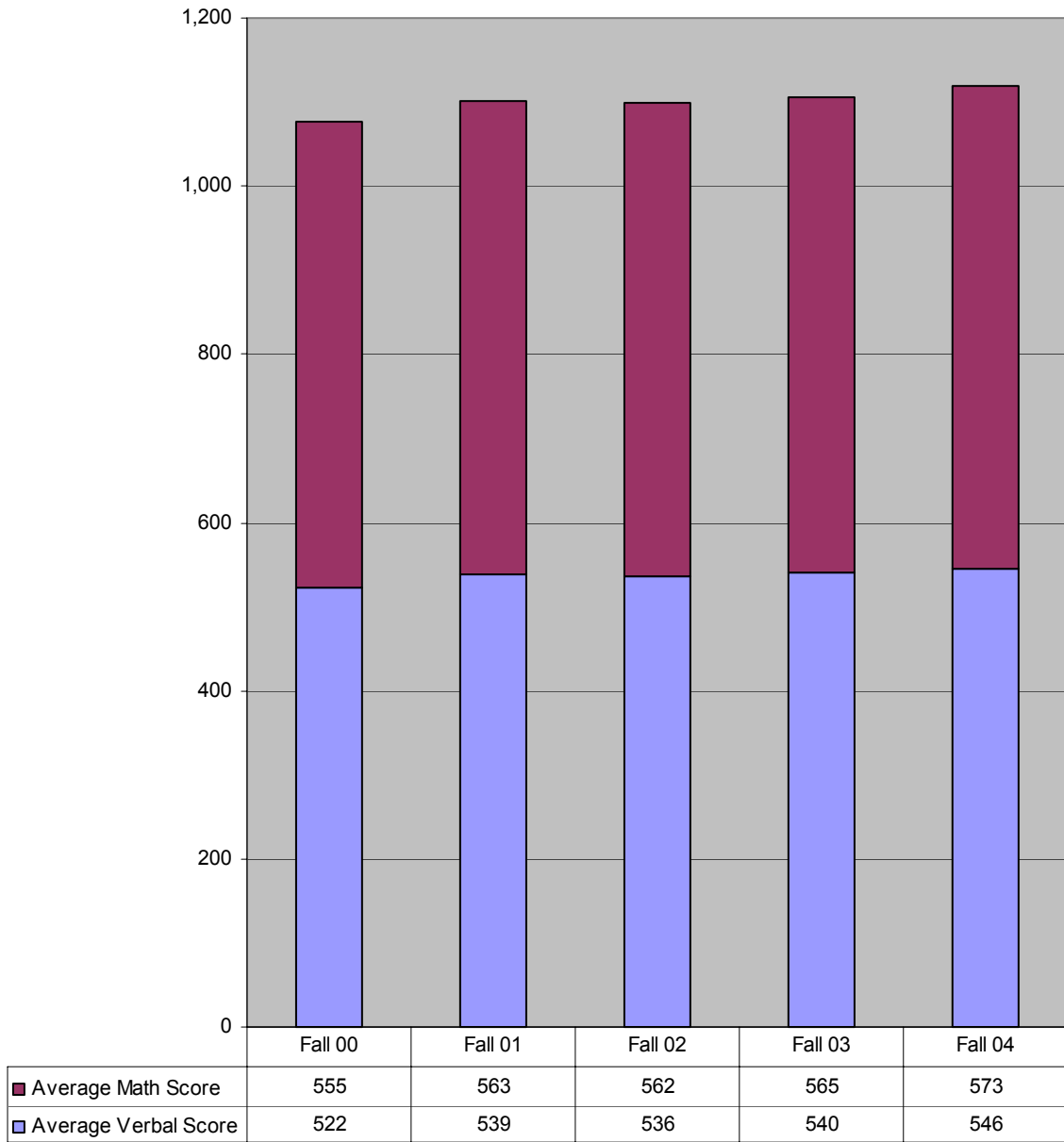
County	High School Attended*	AY 00-01	AY 01-02	AY 02-03	AY 03-04	AY 04-05
Cobb	McEachern	23	14	18	12	18
Cobb	Sprayberry	20	23	15	15	17
Cherokee	Sequoyah	11	4	4	8	16
Cobb	Harrison	21	19	10	12	15
Cobb	Wheeler	13	17	20	20	12
Cobb	North Cobb	17	15	5	15	11
Oconee	Oconee	0	4	2	0	11
Cobb	Kennesaw Mountain	0	0	2	12	10
Cobb	Lassiter	9	25	14	15	10
Douglas	Lithia Springs	3	3	4	3	10
DeKalb	Redan	3	1	8	5	9
Fayette	Fayette	2	3	8	0	9
Cherokee	Woodstock	12	18	7	3	8
Cobb	George Walton-Marietta	15	13	3	11	8
Cobb	South Cobb	10	8	5	4	8
Fayette	Starr's Mill	5	4	0	3	8
Hall	West Hall	1	0	4	0	8
Bartow	Woodland	3	2	1	2	7
Cherokee	Cherokee	10	6	9	2	7
Cobb	Robert L Osborne	5	13	13	15	7
Fayette	Sandy Creek	1	0	9	6	7
Gwinnett	Duluth	3	3	2	9	7
Gwinnett	Parkview	7	8	4	4	7
Cobb	Campbell-Smyrna	7	15	14	20	6
Cobb	Marietta**	36	8	11	35	6
Fannin	Fannin	0	2	3	1	6
Gwinnett	Dacula	0	4	1	1	6
Paulding	East Paulding	9	4	5	9	6
Cobb	Alan C Pope	14	9	10	12	5
Cobb	Carlton J Kell	0	0	0	0	5
Gwinnett	Central Gwinnett	2	7	1	4	5
Gwinnett	Collins Hill	7	11	0	4	5
Gwinnett	Grayson	0	0	3	0	5
Gwinnett	Norcross	2	4	1	5	5
Walton	George Walton Academy	0	4	0	0	5
Cobb	Pebblebrook	4	12	2	5	2
Cobb	Shiloh Hills Christian	0	0	0	3	2
Cobb	Dominion Christian	2	1	5	1	1
Cobb	Mount Paran Christian	0	2	2	3	1


*All Cobb Schools plus those with 5 or more students in current year.

**Joint enrollment classes taught at Marietta HS inflated total.

 **In AY 04-05, the number of new freshmen from Cobb County Schools declined by 28% from AY 00-01.**

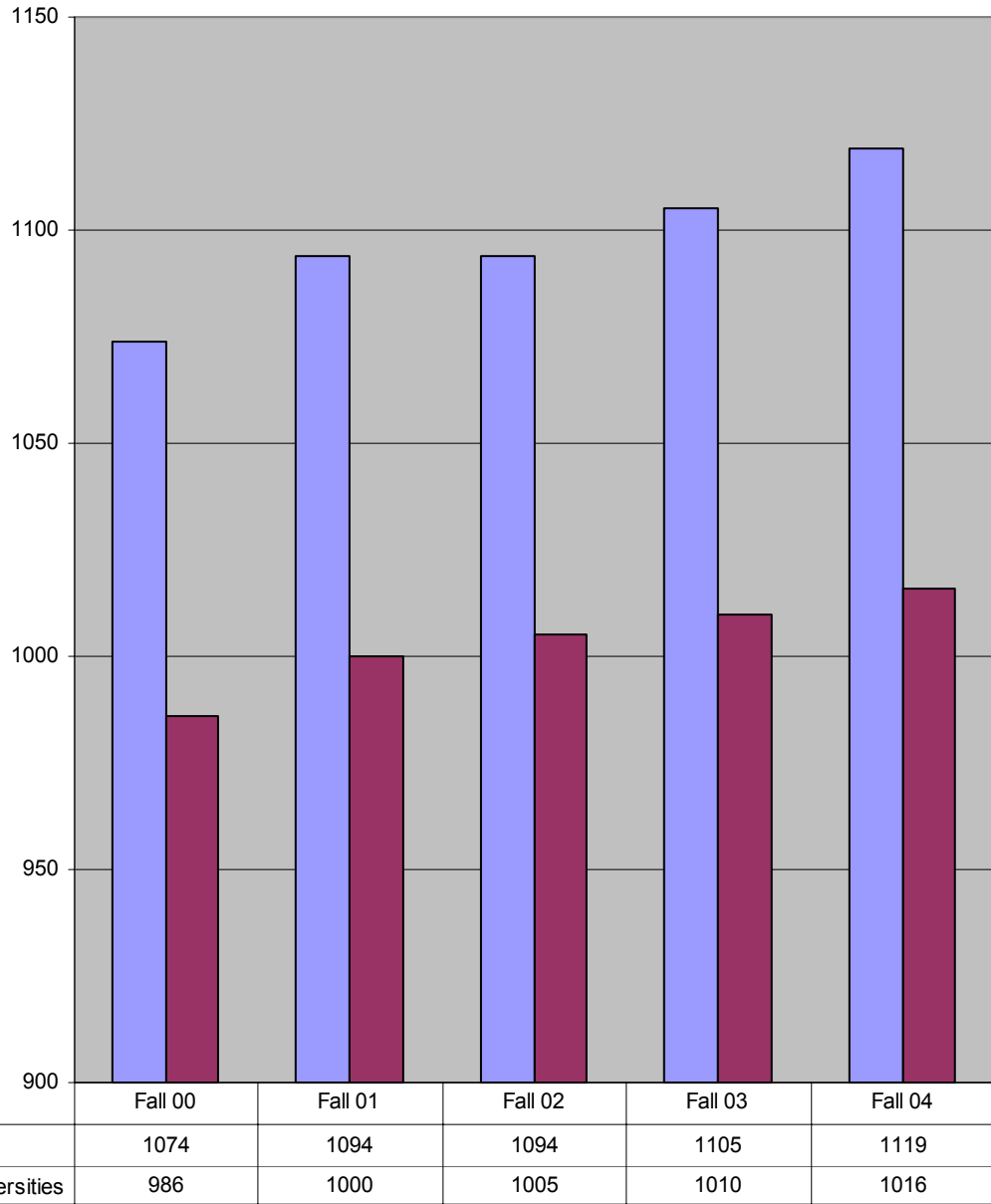
**Average SAT Scores for Entering Freshmen
Fall 00-04**



 **The average SAT Verbal score has increased by 5 % and the average SAT Math score has increased by 3% over the past five years.**

Source: SPSU Banner

**Average Combined SAT Scores for Entering Freshmen
Fall 00-04**



 **The average combined SAT score has increased by 4% for SPSU and by 3% for the other state universities over the past five years.**

Source: USG SAT Report

**University System of Georgia
Average Combined SAT Scores, Entering Freshmen
Fall 00-04**

Institution	Fall 00	Fall 01	Fall 02	Fall 03	Fall 04
Georgia Institute of Technology	1329	1321	1325	1325	1323
Georgia State University	1045	1063	1066	1080	1088
University of Georgia	1198	1201	1211	1209	1230
<i>Research University Average</i>	<i>1194</i>	<i>1197</i>	<i>1199</i>	<i>1211</i>	<i>1220</i>
Georgia Southern University	1008	1028	1052	1056	1080
Valdosta State University	1012	1020	1020	1017	1025
<i>Regional University Average</i>	<i>1009</i>	<i>1026</i>	<i>1040</i>	<i>1042</i>	<i>1060</i>
Albany State University	830	908	926	905	934
Armstrong Atlantic State University	1003	1018	1010	1024	1027
Augusta State University	980	979	984	978	975
Clayton College & State University	984	1006	993	1002	992
Columbus State University	960	970	970	973	989
Fort Valley State University	894	878	893	897	913
Georgia College & State University	1049	1055	1062	1088	1116
Georgia Southwestern State University	1001	999	1005	999	986
Kennesaw State University	1034	1022	1032	1047	1069
North Georgia College & State Univ.	1065	1061	1069	1074	1080
Savannah State University	881	892	887	886	902
Southern Polytechnic State University	1074	1094	1094	1105	1119
State University of West Georgia	980	1000	1008	1009	1006
<i>State University Average</i>	<i>987</i>	<i>1000</i>	<i>1005</i>	<i>1010</i>	<i>1016</i>



The average combined SAT score for SPSU is third highest among all USG institutions.

Source: USG Report

**University System of Georgia
Average High School GPA, Entering Freshmen
Fall 03-04**

Institution	Fall 03	Fall 04
Georgia Institute of Technology	3.74	3.72
Georgia State University	3.32	3.31
University of Georgia	3.62	3.65
<i>Research University Average</i>	<i>3.58</i>	<i>3.59</i>
Georgia Southern University	3.07	3.08
Valdosta State University	3.07	3.05
<i>Regional University Average</i>	<i>3.07</i>	<i>3.07</i>
Albany State University	2.82	2.93
Armstrong Atlantic State University	3.06	3.07
Augusta State University	2.81	2.85
Clayton College & State University	2.91	2.91
Columbus State University	3.02	2.99
Fort Valley State University	2.79	2.84
Georgia College & State University	3.17	3.20
Georgia Southwestern State University	3.18	3.17
Kennesaw State University	3.04	3.18
North Georgia College & State University	3.28	3.30
Savannah State University	2.73	2.84
Southern Polytechnic State University	3.13	3.17
State University of West Georgia	2.97	2.97
<i>State University Average</i>	<i>3.00</i>	<i>3.04</i>



The average High School GPA for SPSU is tied for seventh highest with Georgia Southwestern among all USG institutions.

Source: USG Report

**New Freshmen by Major
Fall 00–04**

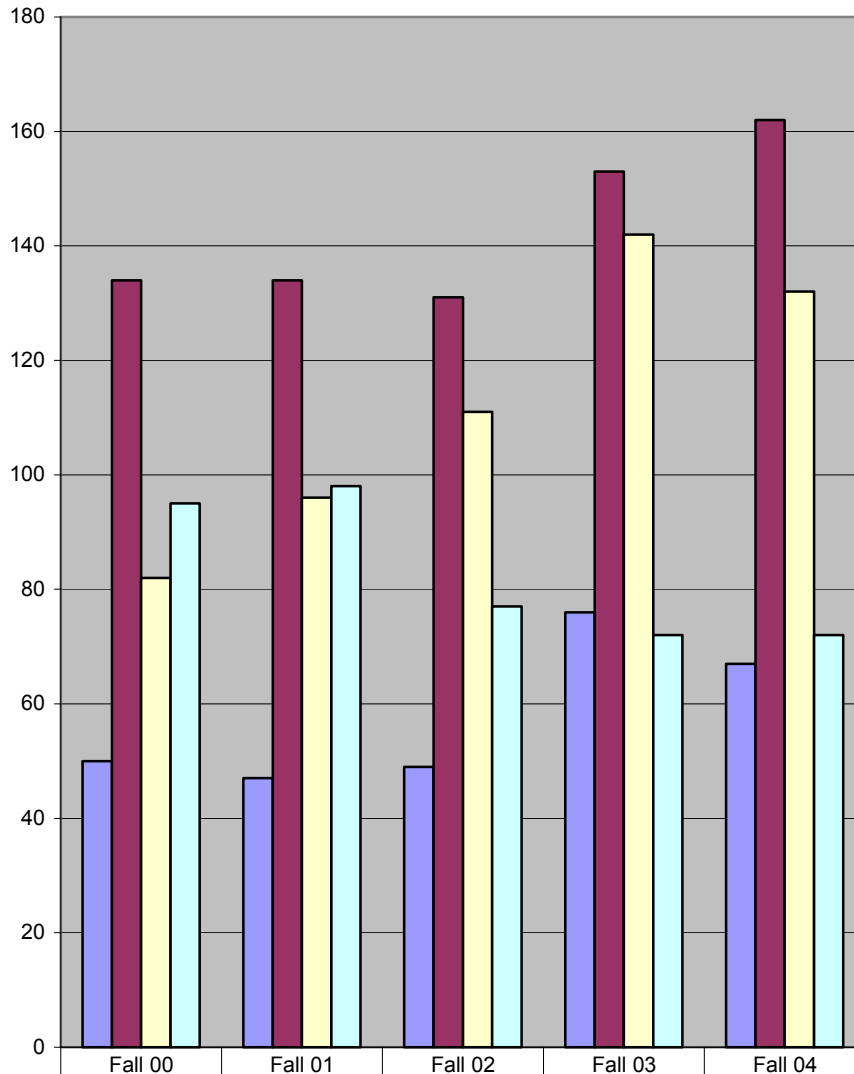
	Fall 00	Fall 01	Fall 02	Fall 03	Fall 04
Apparel/Textile Engineering Technology	4	10	3	12	1
Biology			1	9	6
Civil Engineering Technology	16	22	26	35	30
Computer Engineering Technology	42	42	41	35	38
Computer Science	95	96	65	50	46
Construction	8	9	8	8	11
Electrical Engineering Technology	29	20	22	38	31
General Studies	45	40	39	62	46
Industrial Engineering Technology	9	4	7	7	10
Information Technology			5	9	12
International Studies/Global Technology				1	1
International Technical Communication				1	1
Management	3	7	6	4	8
Mathematics	1	1	4	2	1
Mechanical Engineering Technology	42	41	49	54	71
Physics	3	6	3	1	10
Pre-Architecture	57	63	70	98	89
Software Engineering		2	7	13	14
Surveying and Mapping	1	2	7	1	2
Technical and Professional Communication	1		2		2
Telecommunications Engineering Technology	5	10	3	3	3



The following four majors declined in the number of new freshmen over the past five years: Apparel/Textile Eng Tech, Computer Eng Tech, Computer Science, and Telecommunication Eng Tech.

Source: SPSU Banner

New Freshmen by School Fall 00-04



	Fall 00	Fall 01	Fall 02	Fall 03	Fall 04
School of Arts & Sci	50	47	49	76	67
School of Eng Tech & Mgt	134	134	131	153	162
School of Arch, CET & Const	82	96	111	142	132
School of Comp & SE	95	98	77	72	72



The School of Computing and Software Engineering declined in the number of new freshmen over the past five years.

Source: SPSU Banner

**New Transfers by Major
Fall 00–04**

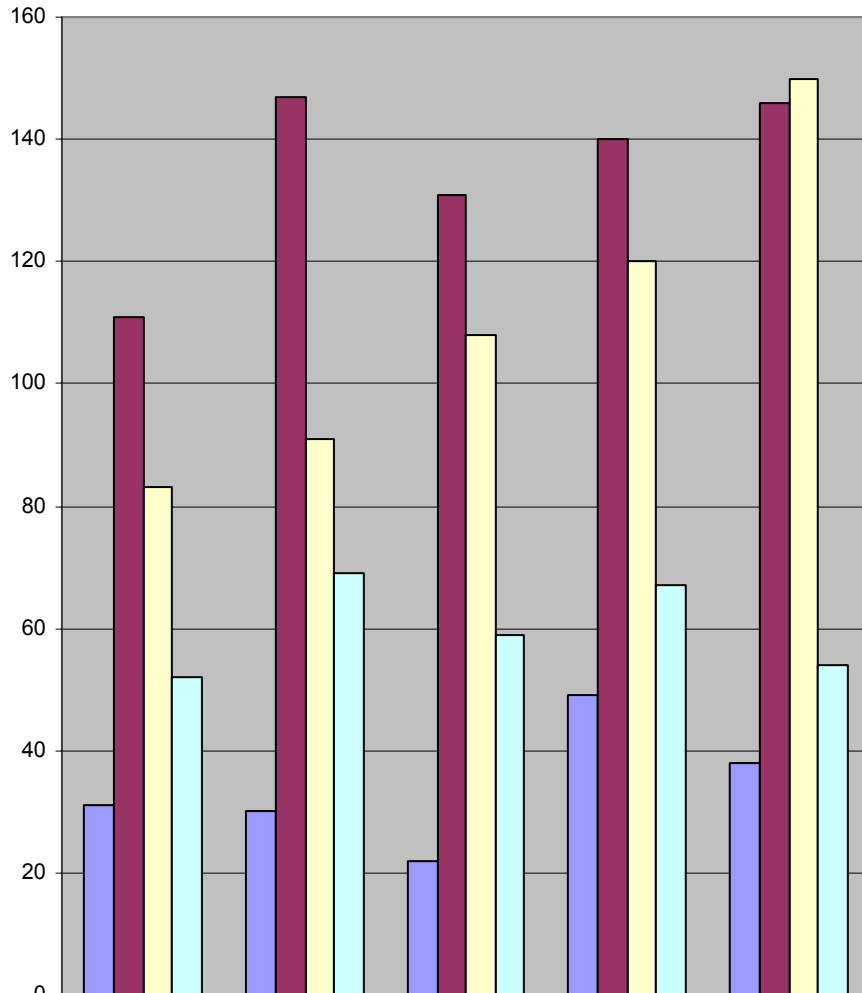
	Fall 00	Fall 01	Fall 02	Fall 03	Fall 04
Apparel/Textile Engineering Technology	5	8	4	7	2
Biology				8	6
Civil Engineering Technology	19	35	33	31	33
Computer Engineering Technology	24	25	20	13	17
Computer Science	52	65	45	38	24
Construction	19	25	19	29	48
Electrical Engineering Technology	36	36	39	40	36
General Studies	22	18	15	21	22
Industrial Distribution			1		
Industrial Engineering Technology	11	9	8	5	10
Information Technology		3	11	24	23
Information Technology (Web)					2
International Studies/Global Technology			1	1	1
International Technical Communication				1	
Management	10	19	19	33	15
Mathematics	2	3	2	5	4
Mechanical Engineering Technology	23	37	28	34	58
Physics	4	1	2	6	1
Pre-Architecture	38	26	53	53	61
Software Engineering		1	3	5	5
Surveying and Mapping	7	5	3	7	8
Technical and Professional Communication	3	8	2	8	4
Telecommunications Engineering Technology	2	13	12	8	8



The following five majors declined in the number of new transfer students over the past five years: Apparel/Textile Eng Tech, Computer Eng Tech, Computer Science, Industrial Eng Tech and Physics.

Source: SPSU Banner

**New Transfers by School
Fall 00-04**



	Fall 00	Fall 01	Fall 02	Fall 03	Fall 04
■ School of Arts & Sci	31	30	22	49	38
■ School of Eng Tech & Mgt	111	147	131	140	146
■ School of Arch, CET & Const	83	91	108	120	150
■ School of Comp & SE	52	69	59	67	54



All schools increased in the number of new transfer students over the past five years.

Source: SPSU Banner

**New Graduate Students by Major
Fall 00–04**

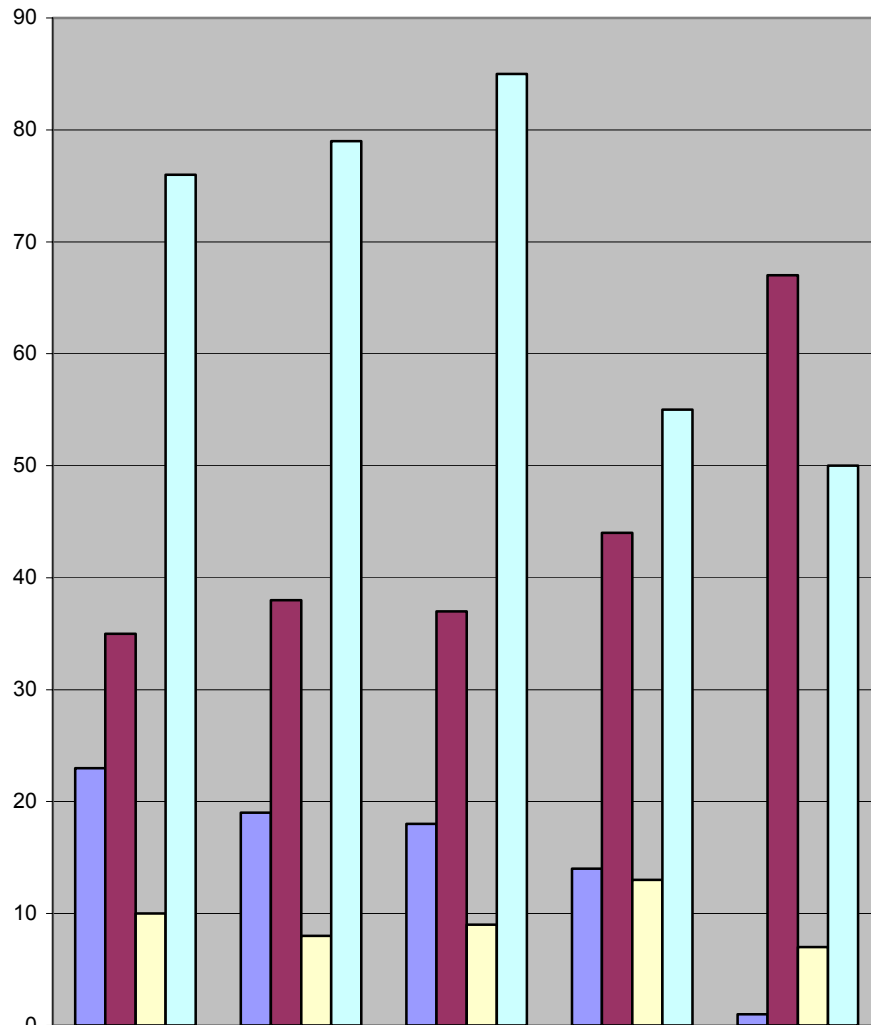
	Fall 00	Fall 01	Fall 02	Fall 03	Fall 04
Computer Science	54	43	50	24	24
Construction	10	8	9	13	7
Engineering Technology-Electrical	3	10	9	5	7
Information Design and Communication					1
Information Technology	17	31	23	24	15
MBA			15	24	32
Management	15	13			
Quality Assurance	17	15	13	14	25
Software Engineering	5	5	12	7	11
Systems Engineering				1	3
Technical and Professional Communication	23	19	18	14	



Construction and Information Technology declined in the number of new students over the past five years.

Source: SPSU Banner

**New Graduate Students by School
Fall 00-04**



	Fall 00	Fall 01	Fall 02	Fall 03	Fall 04
School of Arts & Sci	23	19	18	14	1
School of Eng Tech & Mgt	35	38	37	44	67
School of Arch, CET & Const	10	8	9	13	7
School of Comp & SE	76	79	85	55	50

 **The School of Eng Tech & Mgt increased by 91% in the number of new students over the past five years.**

Source: SPSU Banner