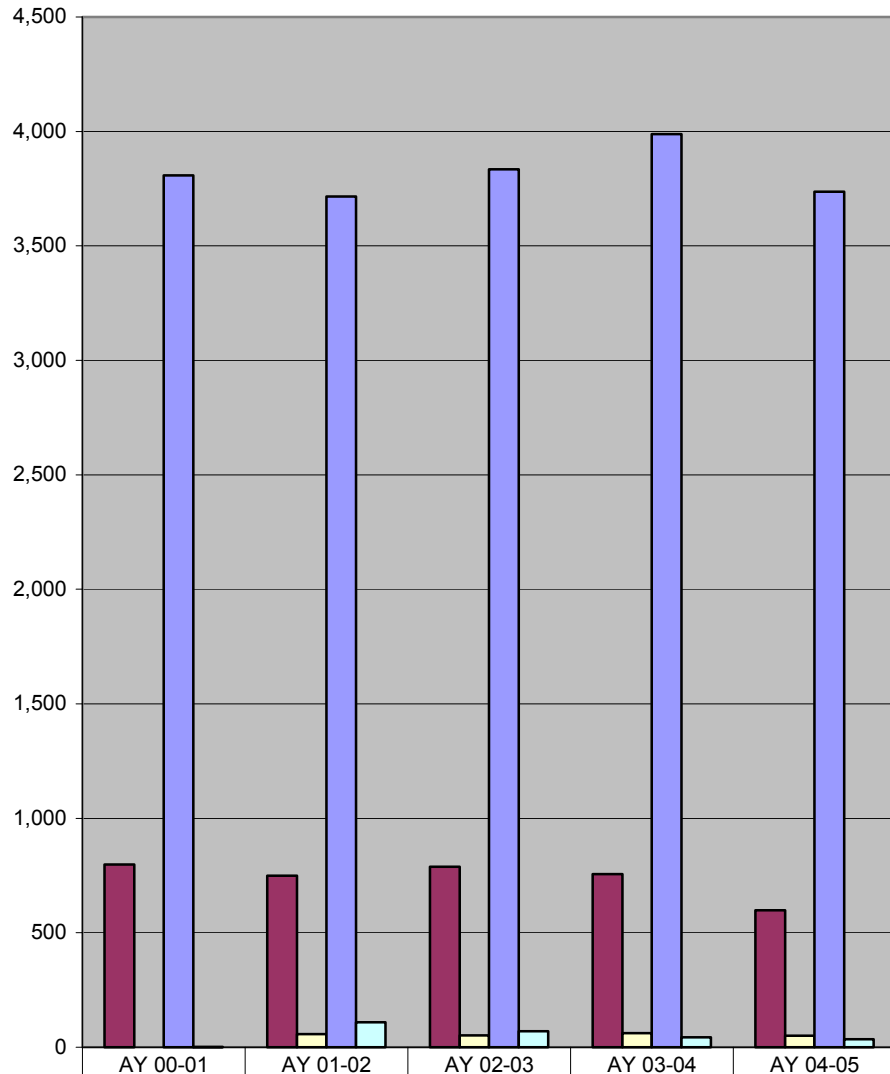


Unduplicated Headcount by Student Level AY 00 - AY 04



	AY 00-01	AY 01-02	AY 02-03	AY 03-04	AY 04-05
Graduate Students	798	749	789	756	598
Grad Certificate Students	1	58	52	61	51
Undergraduate Students	3,808	3,716	3,835	3,989	3,737
Undergrad Certificate Students	1	109	70	44	35



The total number of students (unduplicated) attending SPSU during one academic year has decreased by 4% since the 00-01 academic year.

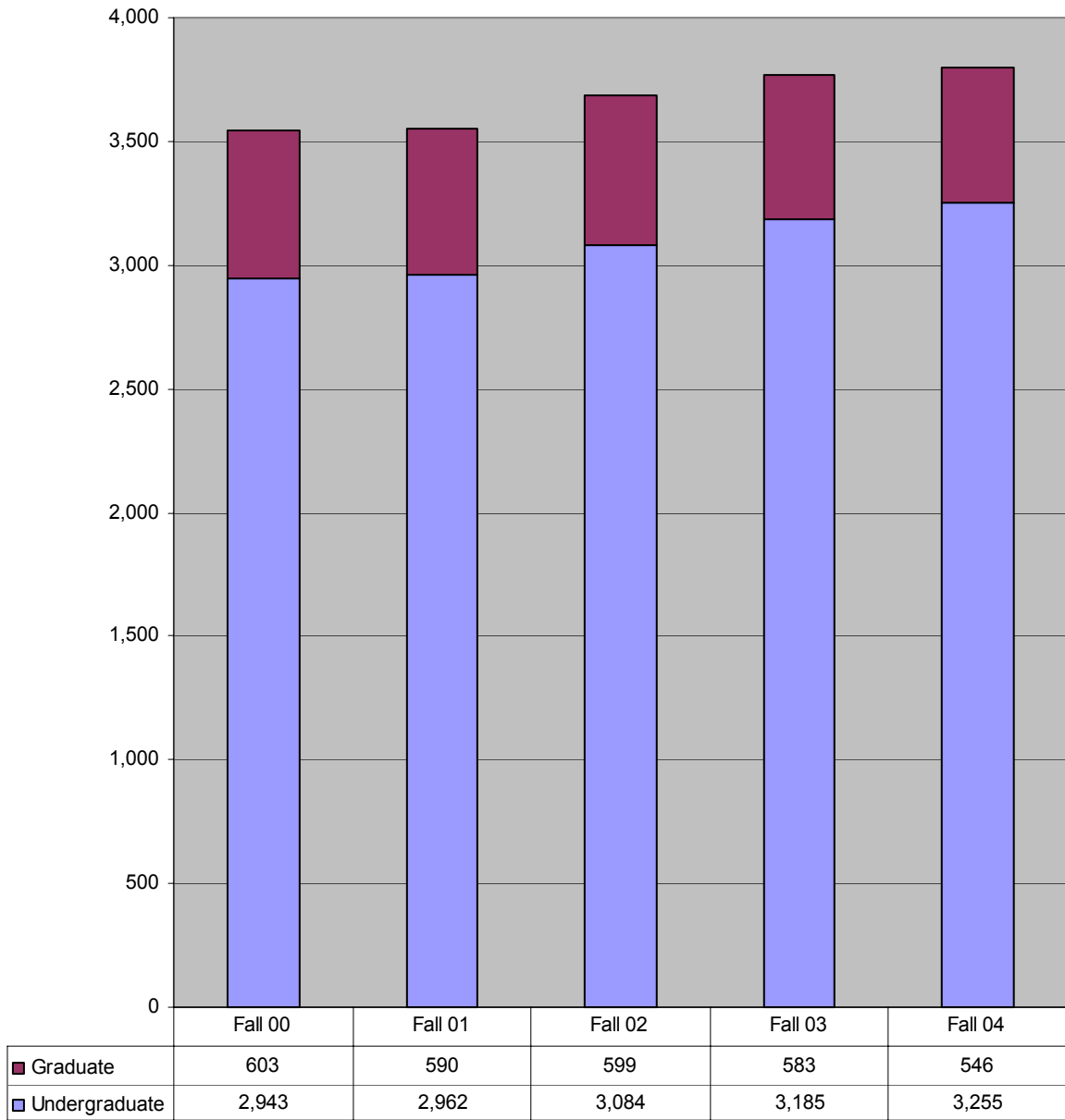
Source: SPSU Banner

University System of Georgia Headcount Enrollment Fall 00-04

Institutions	Fall 00	Fall 01	Fall 02	Fall 03	Fall 04	5 Year Change
Georgia Institute of Technology	14,805	15,575	16,481	16,649	16,841	14%
Georgia State University	23,625	25,743	27,462	28,042	27,261	15%
Medical College of Georgia	2,380	2,377	2,453	2,526	2,556	7%
University of Georgia	31,288	32,317	32,941	33,878	33,405	7%
<i>Research Universities</i>	<i>72,098</i>	<i>76,012</i>	<i>79,337</i>	<i>81,095</i>	<i>80,063</i>	<i>11%</i>
Georgia Southern University	14,184	14,371	15,075	15,704	16,100	14%
Valdosta State University	8,792	9,230	9,900	10,547	10,400	18%
<i>Regional Universities</i>	<i>22,976</i>	<i>23,601</i>	<i>24,975</i>	<i>26,251</i>	<i>26,500</i>	<i>15%</i>
Albany State University	3,525	3,456	3,557	3,681	3,668	4%
Armstrong Atlantic State University	5,444	5,747	6,026	6,653	7,009	29%
Augusta State University	5,090	5,407	5,909	6,135	6,368	25%
Clayton College & State University	4,456	4,675	5,212	5,661	5,954	34%
Columbus State University	5,191	5,521	6,250	6,937	7,224	39%
Fort Valley State University	2,561	2,485	2,446	2,537	2,558	0%
Georgia College & State University	5,090	5,079	5,513	5,695	5,531	9%
Georgia Southwestern State University	2,622	2,535	2,508	2,410	2,323	-11%
Kennesaw State University	13,373	13,951	15,654	17,485	17,961	34%
North Georgia College & State University	3,627	3,863	4,178	4,517	4,552	26%
Savannah State University	2,166	2,270	2,529	2,752	2,800	29%
Southern Polytechnic State University	3,548	3,556	3,684	3,770	3,803	7%
University of West Georgia	8,966	9,030	9,675	10,255	10,216	14%
<i>State Universities</i>	<i>65,659</i>	<i>67,575</i>	<i>73,141</i>	<i>78,488</i>	<i>79,967</i>	<i>22%</i>
Dalton State College	3,139	3,647	4,135	4,201	4,252	35%
Macon State College	4,116	4,485	4,991	5,403	5,733	39%
<i>State Colleges</i>	<i>7,255</i>	<i>8,132</i>	<i>9,126</i>	<i>9,604</i>	<i>9,985</i>	<i>38%</i>
Abraham Baldwin Agricultural College	2,630	2,857	3,033	3,407	3,362	28%
Atlanta Metropolitan College	1,901	1,940	1,995	1,907	1,802	-5%
Bainbridge College	1,316	1,735	2,047	2,268	2,620	99%
Coastal Georgia Community College	1,912	2,210	2,398	2,818	2,879	51%
Darton College	2,805	3,179	3,357	3,811	4,126	47%
East Georgia College	1,313	1,393	1,499	1,420	1,318	0%
Gainesville College	3,256	3,692	4,163	5,282	5,781	78%
Georgia Highlands College	2,090	2,400	2,863	3,293	3,416	63%
Georgia Perimeter College	13,708	15,372	17,573	18,986	20,316	48%
Gordon College	2,890	3,074	3,116	3,415	3,449	19%
Middle Georgia College	1,941	2,165	2,214	2,517	2,627	35%
South Georgia College	1,267	1,325	1,361	1,431	1,443	14%
Waycross College	861	884	900	1,027	1,005	17%
<i>Two-Year Colleges</i>	<i>37,890</i>	<i>42,226</i>	<i>46,519</i>	<i>51,582</i>	<i>54,144</i>	<i>43%</i>
System Totals	205,878	217,546	233,098	247,020	250,659	22%

Source: USG

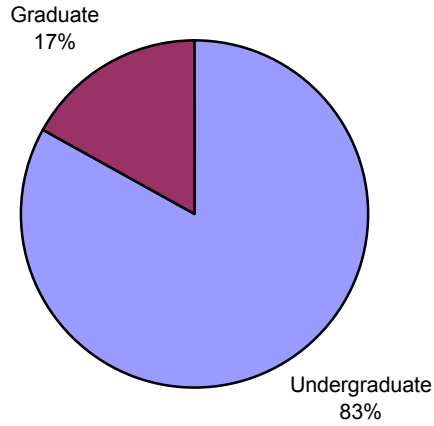
**Headcount Enrollment by Student Level
Fall 00-04**



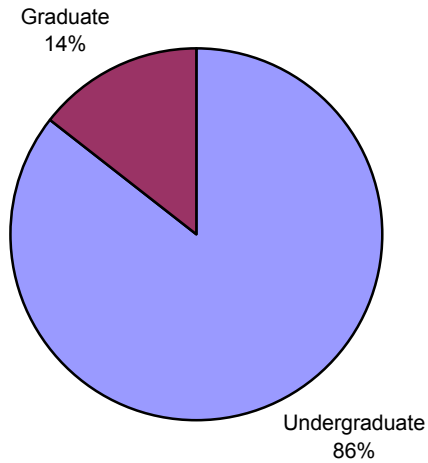
The number of undergraduates has increased by 11% and the number of graduate students has decreased by 9% over the past five years.

Source: IPEDS Fall Enrollment Survey

Headcount Enrollment by Student Level Fall 00

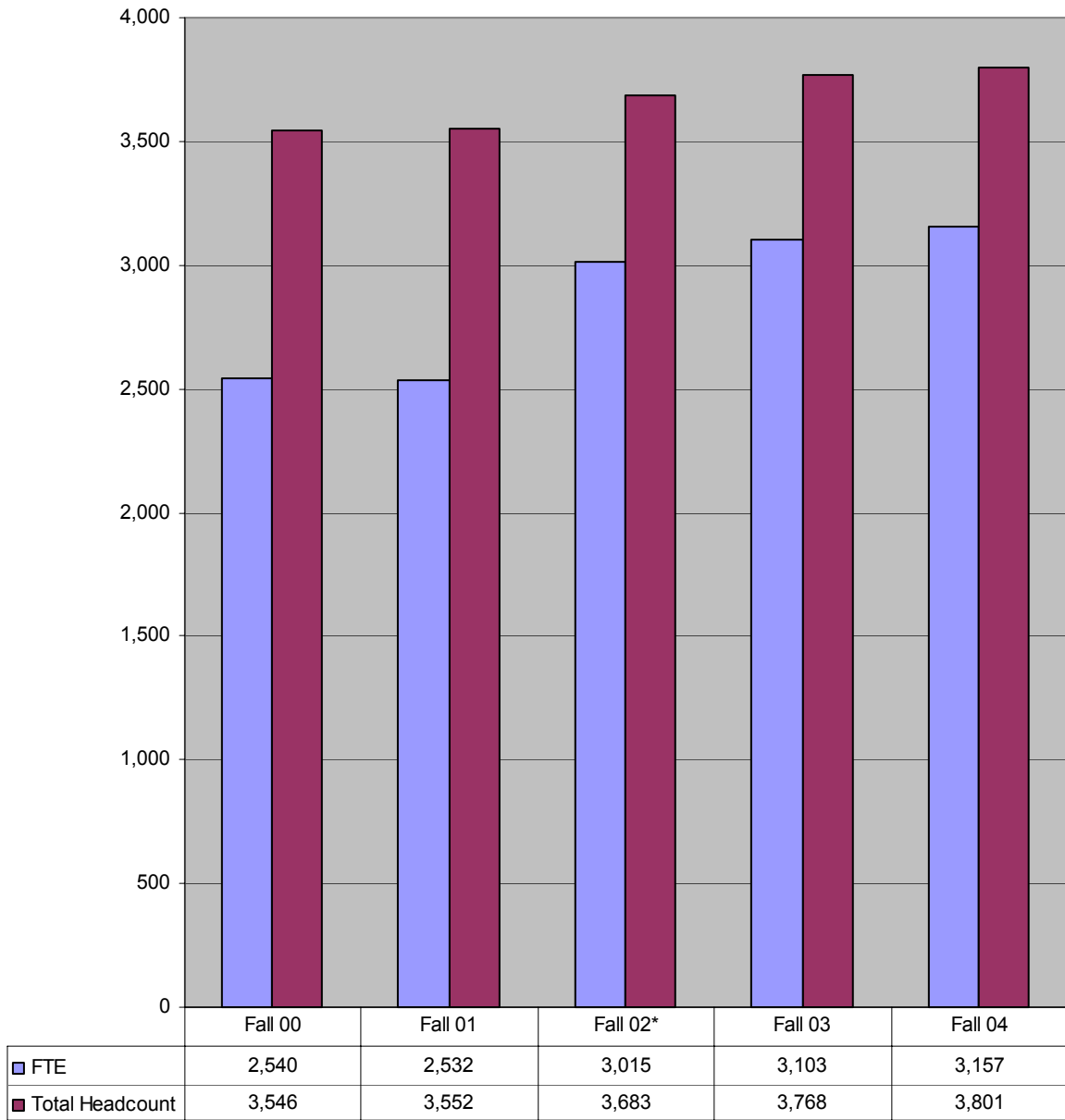


Headcount Enrollment by Student Level Fall 04



The proportion of undergraduate students increased by 3 percentage points and graduate students decreased by 3 percentage points during the past five years.

Headcount and FTE* Enrollment Fall 00-04

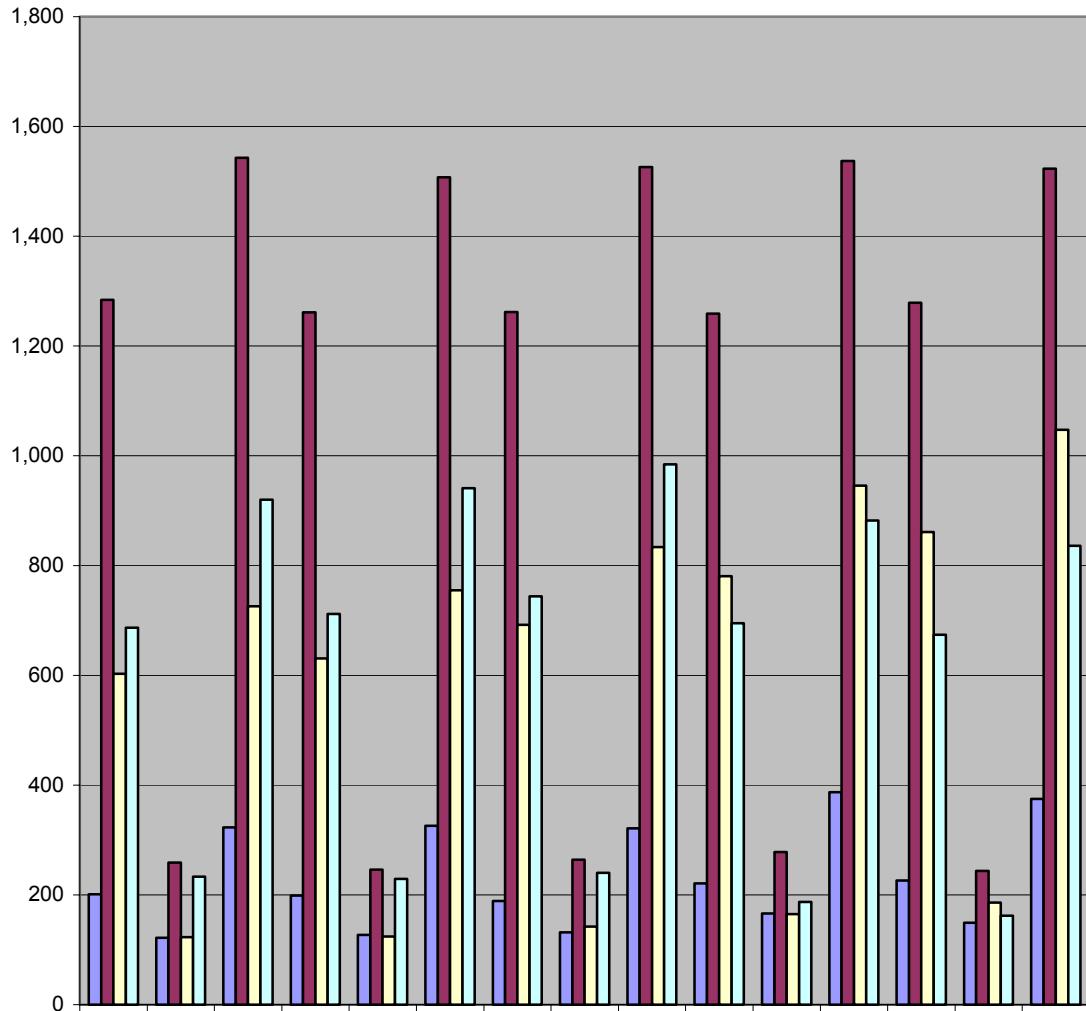


*FTE Calculation method changed by BoR in Fall 02

 **FTE increased at a 17% faster rate than headcount during the past five years.**

Source: IPEDS Fall Enrollment Survey and USG SIRS Fall Enrollment Report

Enrollment by School by Gender Fall 00-04



	Fall 00			Fall 01			Fall 02			Fall 03			Fall 04		
	M	F	Total	M	F	Total	M	F	Total	M	F	Total	M	F	Total
School of Arts & Sci	201	122	323	199	127	326	189	132	321	221	166	387	226	149	375
School of Eng Tech & Mgt	1,284	259	1,543	1,261	246	1,507	1,262	264	1,526	1,259	278	1,537	1,279	244	1,523
School of Arch, CET & Const	603	123	726	631	124	755	692	142	834	781	165	946	861	186	1,047
School of Comp & SE	687	233	920	712	229	941	744	240	984	695	187	882	674	162	836

The School of Arch, CET & Const grew by 44% over the past five years.

The School of Comp & SE lost 71 total females over the past five years.

Source: USG SIRS Fall Enrollment Report

**Enrollment by Major and Gender
Fall 00-04**

	Fall 00			Fall 01			Fall 02			Fall 03			Fall 04		
	Male	Female	Total	Male	Female	Total	Male	Female	Total	Male	Female	Total	Male	Female	Total
Certificate	58	28	86	70	22	92	69	17	86	40	15	55	39	28	67
Apparel Product Development				0	1	1									
Computer Programming	21	15	36	18	8	26	5	2	7	3	1	4	1	1	2
Computer Science (Post Bacc.)	16	5	21	21	8	29	16	4	20	13	2	15	10	5	15
Information Technology (Post Bacc.)							1	0	1				2	1	3
Land Development							1	1	2	0	2	2	1	0	1
Land Surveying				4	0	4	11	0	11	10	0	10	4	1	5
Pre-Software Systems Development	1	0	1				0	1	1						
Project Management				3	2	5	4	2	6	3	6	9	5	6	11
Quality Assurance (Post Bacc.)				2	0	2	1	0	1	1	1	2	1	0	1
Software Engineering (Post Bacc.)	5	3	8	4	1	5	8	1	9	3	0	3	1	1	2
Software Systems Development	15	5	20	18	2	20	19	6	25						
Specialty Construction							3	0	3	5	1	6	2	0	2
Systems Engineering (Post Bacc.)										2	2	4	7	2	9
Tech and Profess Comm (Post Bacc.)													5	11	16

Enrollment by Major and Gender
(continued)

	Fall 00			Fall 01			Fall 02			Fall 03			Fall 04		
	Male	Female	Total	Male	Female	Total	Male	Female	Total	Male	Female	Total	Male	Female	Total
Undergraduate	2,421	479	2,900	2,435	476	2,911	2,511	521	3,032	2,601	572	3,173	2,694	546	3,240
Apparel Engineering Technology	0	1	1	0	1	1	0	1	1	0	2	2			
Apparel/Textile Engineering Technology	40	27	67	37	24	61	29	27	56	20	34	54	11	19	30
Applied Science				1	0	1				1	1	2	1	2	3
Architecture	47	16	63	33	12	45	21	10	31	17	4	21	64	23	87
Biology							3	4	7	18	20	38	29	41	70
Civil Engineering Technology	200	40	240	222	35	257	216	30	246	225	30	255	247	29	276
Computer Engineering Technology	233	31	264	262	28	290	232	28	260	181	20	201	156	23	179
Computer Science	478	91	569	471	77	548	430	73	503	353	50	403	286	34	320
Construction	176	10	186	170	14	184	182	18	200	206	15	221	258	31	289
Electrical Engineering Technology	311	31	342	288	28	316	311	28	339	311	27	338	317	30	347
Environmental Development	3	0	3												
General Studies/Undeclared	127	24	151	118	33	151	114	40	154	117	60	177	83	21	104
Industrial Distribution	10	3	13	8	4	12	5	2	7	0	1	1	0	1	1
Industrial Engineering Technology	129	47	176	96	36	132	96	35	131	97	31	128	102	20	122
Information Technology				18	4	22	69	18	87	116	26	142	145	32	177
Information Technology (Web)													4	1	5
International Studies/Global Technology							1	1	2	8	6	14	7	6	13
International Technical Communication				2	2	4	2	1	3	1	4	5	2	6	8
Management	100	55	155	114	48	162	111	57	168	129	65	194	126	55	181
Mathematics	23	6	29	17	7	24	17	12	29	23	15	38	26	13	39
Mechanical Engineering Technology	315	13	328	280	15	295	301	13	314	335	14	349	390	19	409
Physics	18	3	21	15	6	21	15	6	21	21	6	27	41	5	46
Pre-Architecture	120	52	172	147	55	202	207	74	281	260	99	359	219	87	306
Software Engineering				9	2	11	24	6	30	54	9	63	73	8	81
Surveying and Mapping	29	1	30	31	3	34	31	3	34	31	4	35	42	5	47
Technical and Professional Communication	17	24	41	25	30	55	26	25	51	20	20	40	23	28	51
Telecommunications Engineering Technology	44	3	47	70	12	82	67	9	76	56	9	65	42	7	49
Textile Engineering Technology	1	1	2	1	0	1	1	0	1	1	0	1			

Enrollment by Major and Gender (continued)

	Fall 00			Fall 01			Fall 02			Fall 03			Fall 04		
	Male	Female	Total	Male	Female	Total	Male	Female	Total	Male	Female	Total	Male	Female	Total
Graduate	296	230	526	298	228	526	307	240	547	317	212	529	318	170	488
Computer Science	118	91	209	92	86	178	99	72	171	78	52	130	63	39	102
Construction	28	4	32	24	5	29	20	6	26	27	10	37	24	10	34
Engineering Technology-Electrical	14	1	15	21	3	24	32	8	40	34	8	42	28	5	33
Information Design and Communication													0	1	1
Information Technology	9	10	19	35	31	66	43	49	92	41	41	82	48	30	78
MBA							9	8	17	40	20	60	55	29	84
Management	28	25	53	18	21	39	15	21	36	4	14	18	1	2	3
Quality Assurance	59	21	80	60	23	83	48	25	73	46	25	71	44	26	70
Software Engineering	24	13	37	26	10	36	30	8	38	34	6	40	41	10	51
Systems Engineering										0	1	1	4	1	5
Technical and Professional Communication	16	65	81	22	49	71	11	43	54	13	35	48	10	17	27
Total University	2,775	737	3,512	2,803	726	3,529	2,887	778	3,665	2,956	796	3,752	3,040	741	3,781
School of Arts & Sci	201	122	323	199	127	326	189	132	321	221	166	387	226	149	375
School of Eng Tech & Mgt	1,284	259	1,543	1,261	246	1,507	1,262	264	1,526	1,259	278	1,537	1,279	244	1,523
School of Arch, CET & Const	603	123	726	631	124	755	692	142	834	781	165	946	861	186	1,047
School of Comp & SE	687	233	920	712	229	941	744	240	984	695	187	882	674	162	836

 Of the 6 undergraduate programs that declined over the past five years, the 2 that declined over fifty percent were Apparel/Textile Eng Tech and Industrial Distribution.

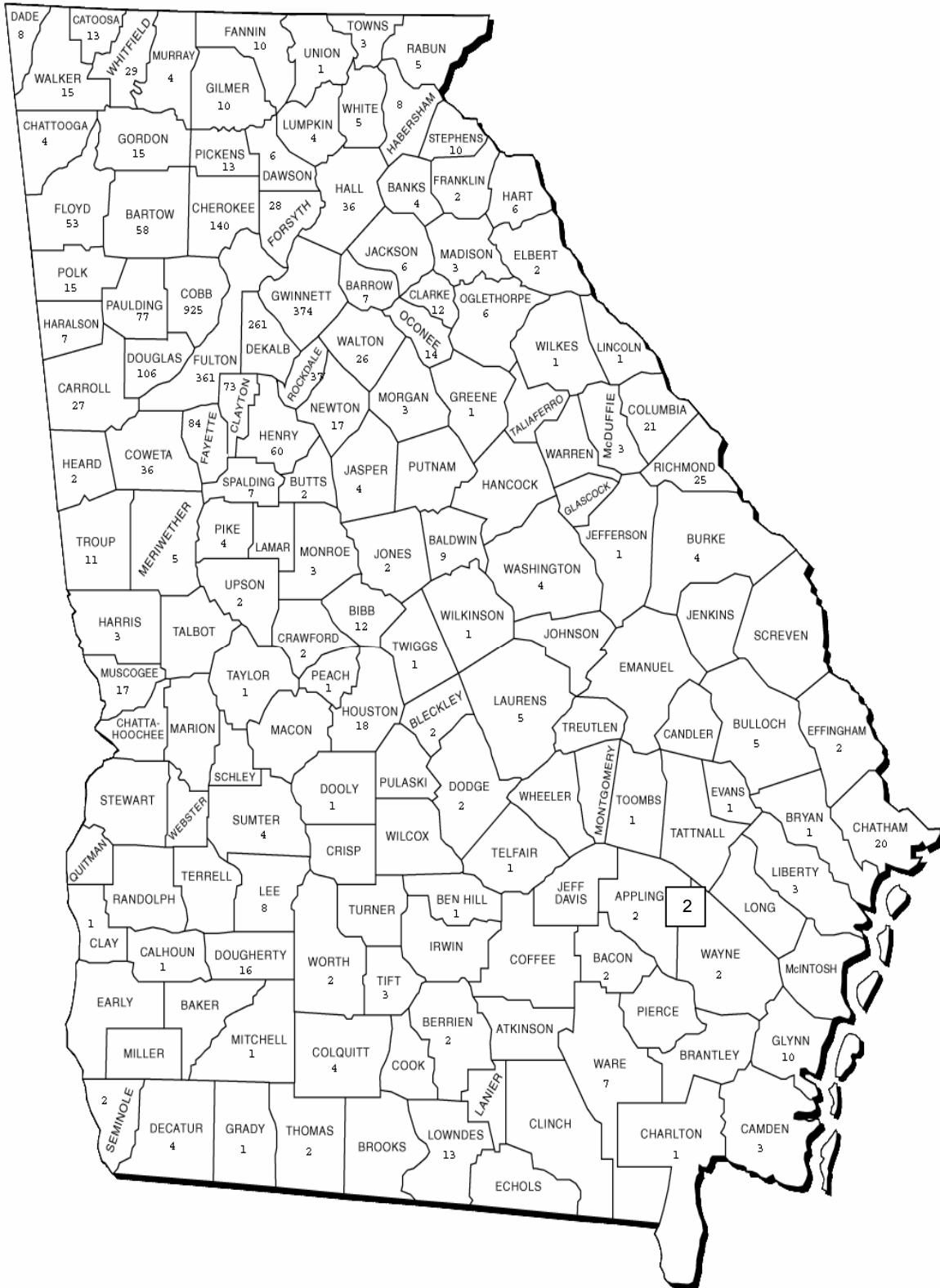
 Of the 3 graduate programs that declined over the past five years, the 2 that declined over fifty percent were Computer Science and Technical & Professional Communication.

 Over the past five years, the number of undergraduate females declined at least 50% in Computer Science, Industrial Eng Tech and Industrial Distribution.

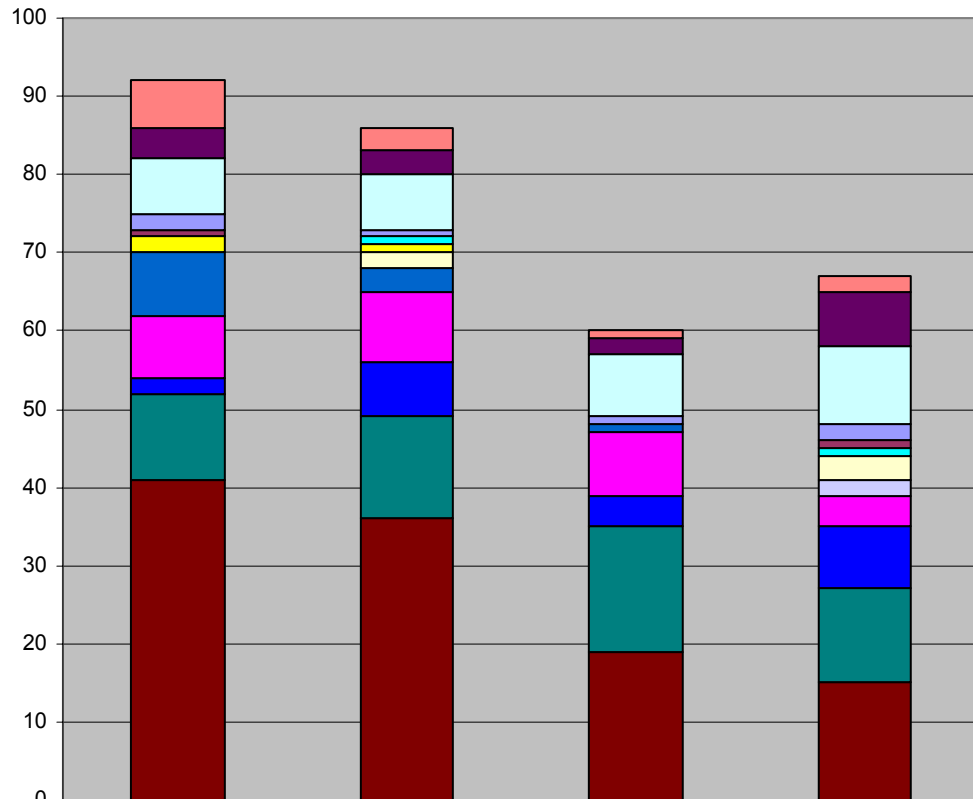
 Over the past five years, the number of graduate females declined at least 50% in Computer Science and Technical & Professional Communication

SPSU Students from Georgia Counties

Fall 04



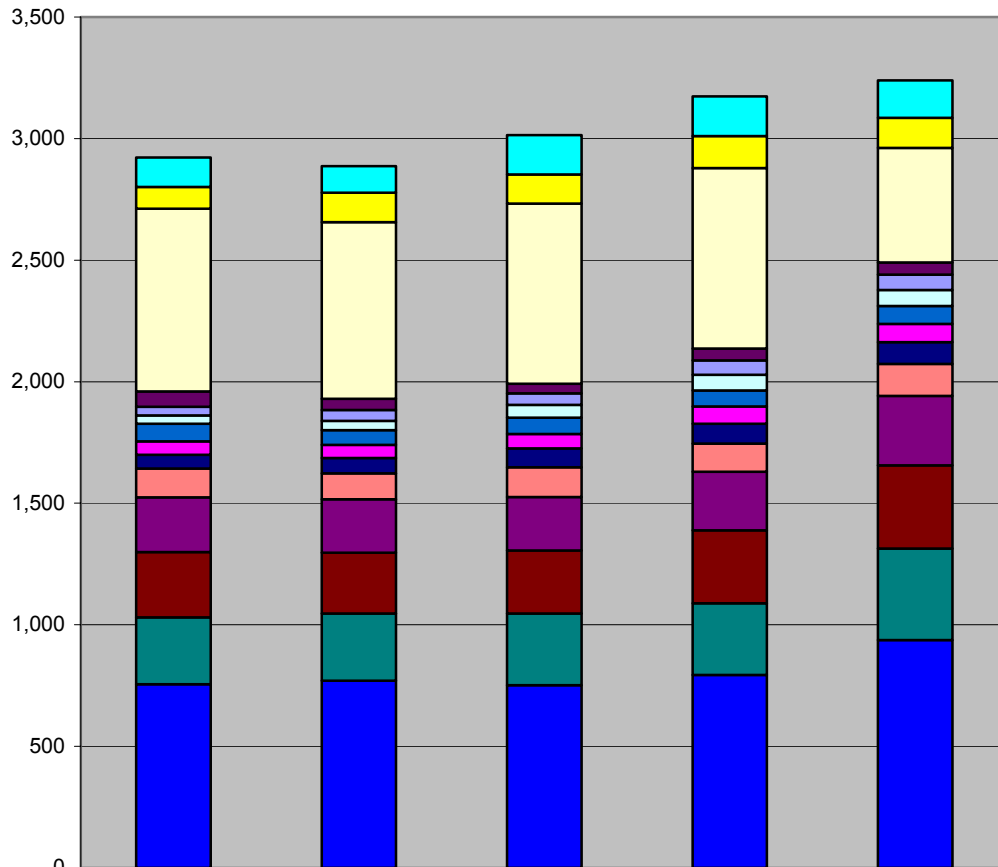
Certificate Enrollment by Place of Origin Fall 01-04



	Fall 01	Fall 02	Fall 03	Fall 04
Other Countries	6	3	1	2
Other States	4	3	2	7
Other GA Counties	7	7	8	10
Bartow	2	1	1	2
Henry	1	0	0	1
Fayette	0	1	0	1
Clayton	2	1	0	0
Paulding	0	2	0	3
Douglas	0	0	0	2
Cherokee	8	3	1	0
DeKalb	8	9	8	4
Gwinnett	2	7	4	8
Fulton	11	13	16	12
Cobb	41	36	19	15

Over the past four years, the number of certificate students from Cobb County decreased by 63%.

Undergraduate Enrollment by Place of Origin Fall 00-04

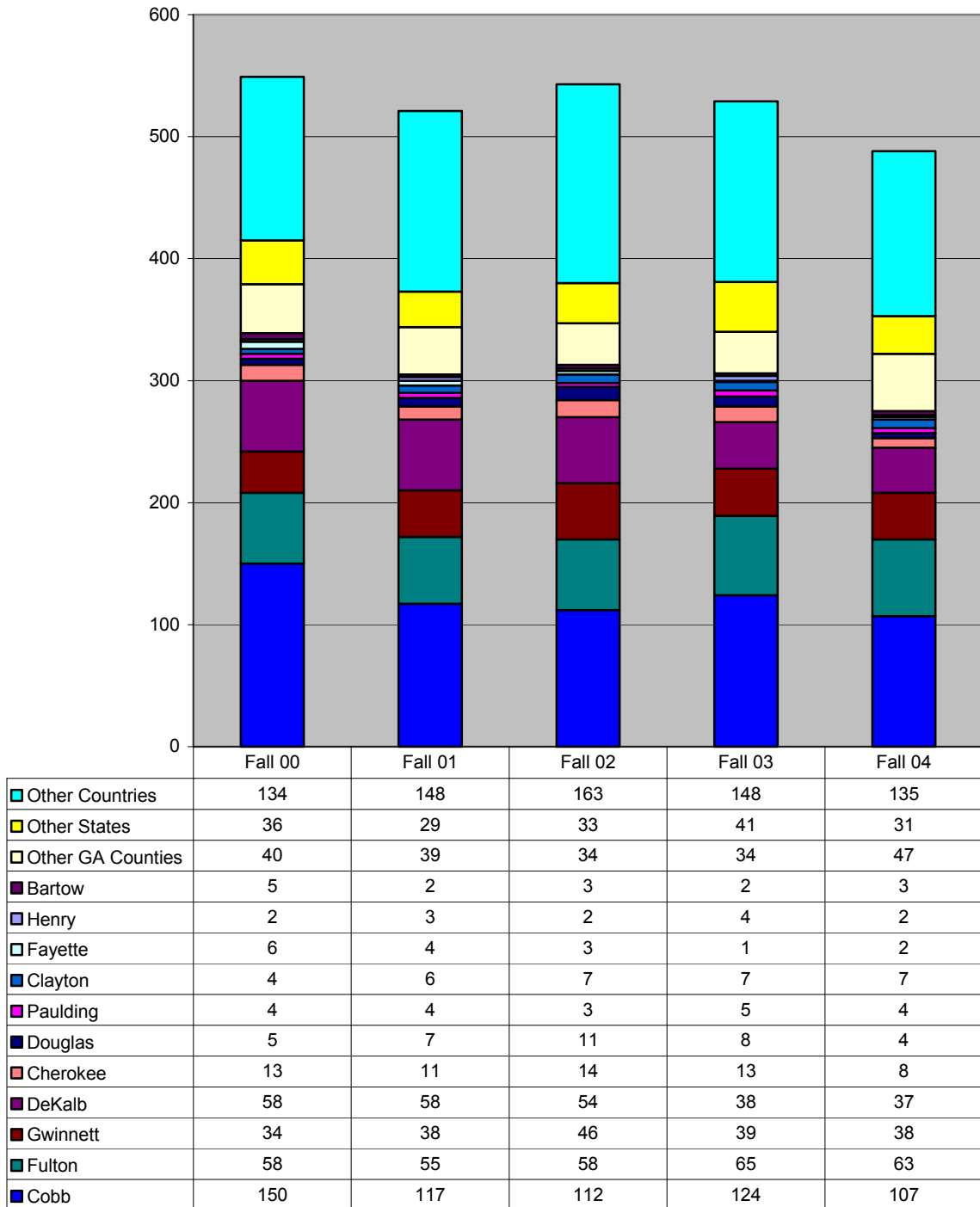


	Fall 00	Fall 01	Fall 02	Fall 03	Fall 04
Other Countries	121	109	161	164	154
Other States	89	122	121	131	124
Other GA Counties	752	726	740	743	471
Bartow	63	47	40	48	51
Henry	36	44	47	59	63
Fayette	34	38	53	65	66
Clayton	72	61	67	66	73
Paulding	56	54	60	71	76
Douglas	56	63	77	81	89
Cherokee	119	106	123	117	131
DeKalb	225	220	219	240	286
Gwinnett	268	251	260	300	343
Fulton	276	276	294	295	376
Cobb	755	770	752	794	937



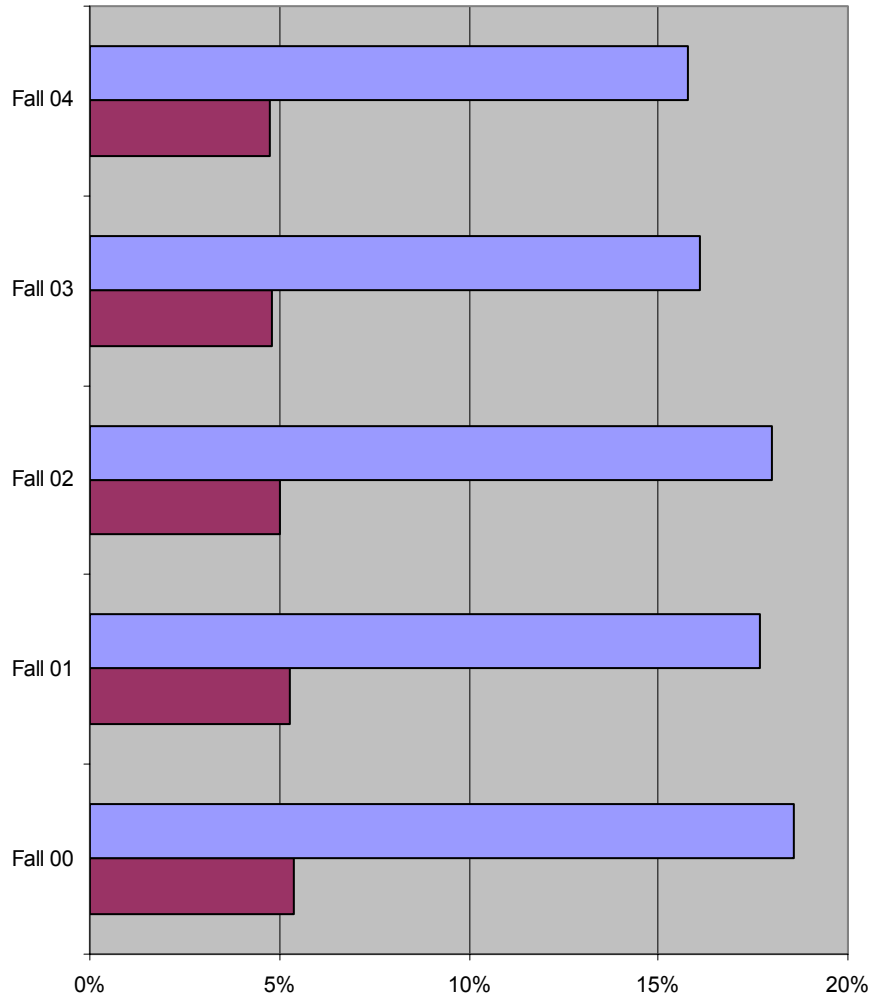
Over the past five years, the number of undergraduate students from Cobb County increased by 24%.

Graduate Enrollment by Place of Origin Fall 00-04



Over the past five years, the number of graduate students from Cobb County declined by 29%.

**SPSU's Contribution of International Students to USG State Universities
Fall 00-04**



	Fall 00	Fall 01	Fall 02	Fall 03	Fall 04
■ % SPSU to USG State Univ Aliens	18.6%	17.7%	18.0%	16.1%	15.8%
■ % SPSU to USG State Univ Total Students	5.4%	5.3%	5.0%	4.8%	4.8%

 **Although SPSU contributed 5% of the total enrollment of the USG State Universities in Fall 04, it contributed 16% of the international students.**

Source: USG SIRS Fall Enrollment Report

**Countries Contributing Largest Number of Students (5 or more)
Fall 04**

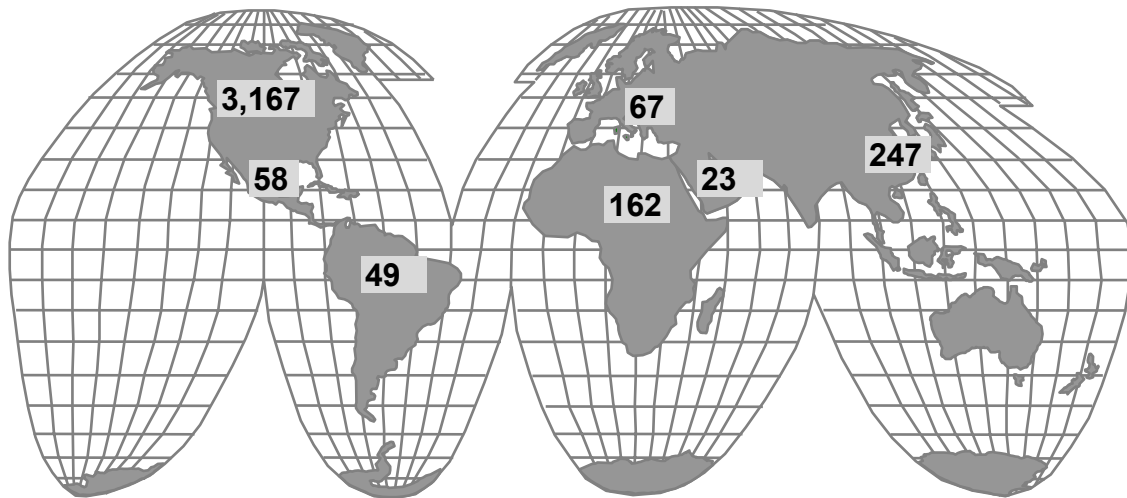
Country	Undergrads		Country	Grads
India	33		India	88
Jamaica	23		China	19
Nigeria	23		Turkey	18
Kenya	22		Thailand	10
Colombia	18		Nigeria	6
Vietnam	17		Ethiopia	6
Cameroon	14		Kenya	5
Canada	14		Colombia	5
Ethiopia	14		Iran	5
China	12			
Venezuela	10			
Gambia	8			
Iran	8			
Korea, South	8			
Ghana	7			
Mexico	7			
Nepal	7			
Brazil	6			
Germany	6			
Bangladesh	5			
Cote D'Ivoire	5			
Haiti	5			
Japan	5			
Liberia	5			
Pakistan	5			
Ukraine	5			
United Kingdom	5			

 India continues to provide the most undergraduate and graduate students of any foreign country.

 From Fall 03 to Fall 04, the number of graduate students from China declined by 30%.

Source: SPSU Banner

Students Contributed by World Region Fall 04



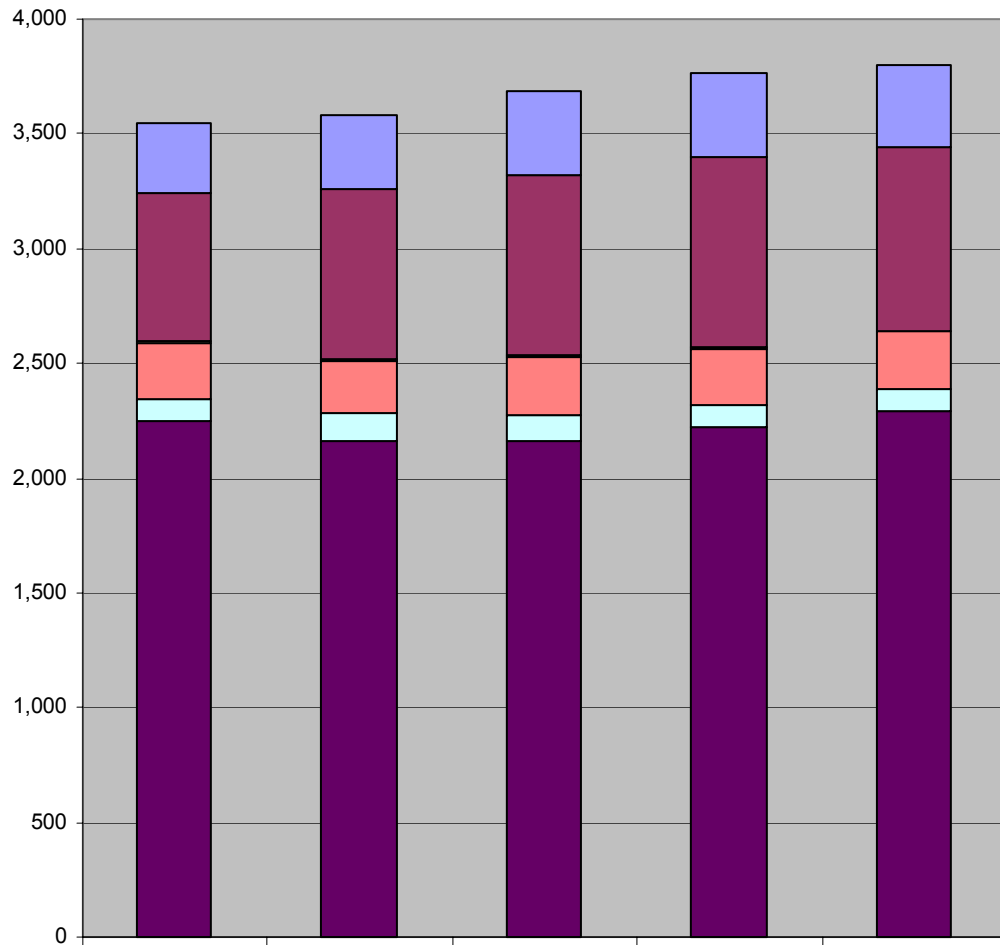
By Region	Certificate	Undergrad	Grad	Total
Africa	2	124	36	162
Asia	3	109	135	247
Central America/Caribbean	0	52	6	58
Europe/Former Soviet Union	0	43	24	67
Middle East	0	16	7	23
US/Canada	41	2854	272	3167
South America	0	41	8	49
Total	46	3239	488	3773



From Fall 03 to Fall 04, the number of students from Europe increased by 16%, students from Africa increased by 9%, and students from Asia decreased by 4%.

Source: SPSU Banner

Headcount Enrollment by Race/Ethnicity Fall 00-04



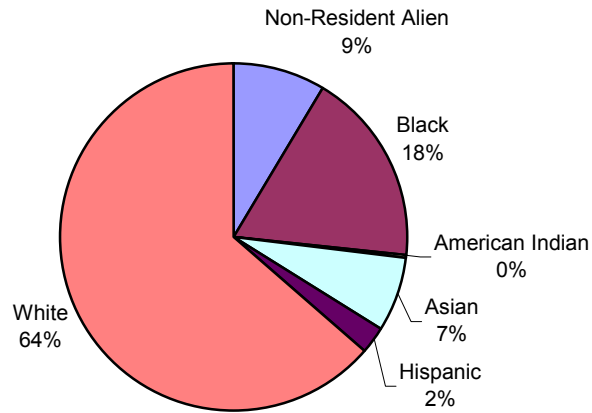
	Fall 00	Fall 01	Fall 02	Fall 03	Fall 04
Non-Resident Alien	302	316	367	366	357
Black	647	744	784	829	800
American Indian	7	7	8	8	7
Asian	250	231	250	245	247
Hispanic	88	123	112	102	95
White	2,252	2,158	2,162	2,218	2,295



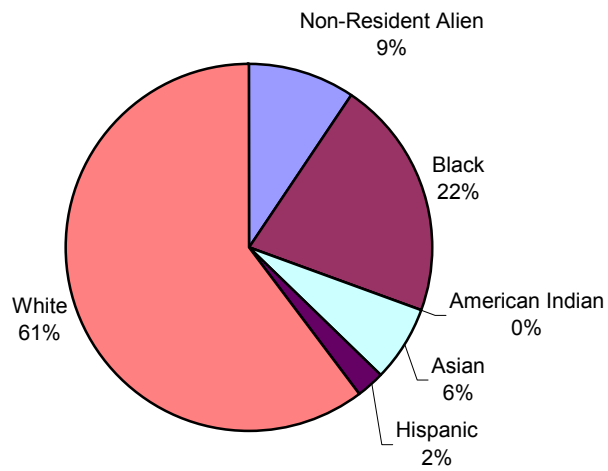
Over the past five years, all ethnic groups increased except Asians.

Source: IPEDS Fall Enrollment Survey

Headcount Enrollment by Race/Ethnicity Fall 00

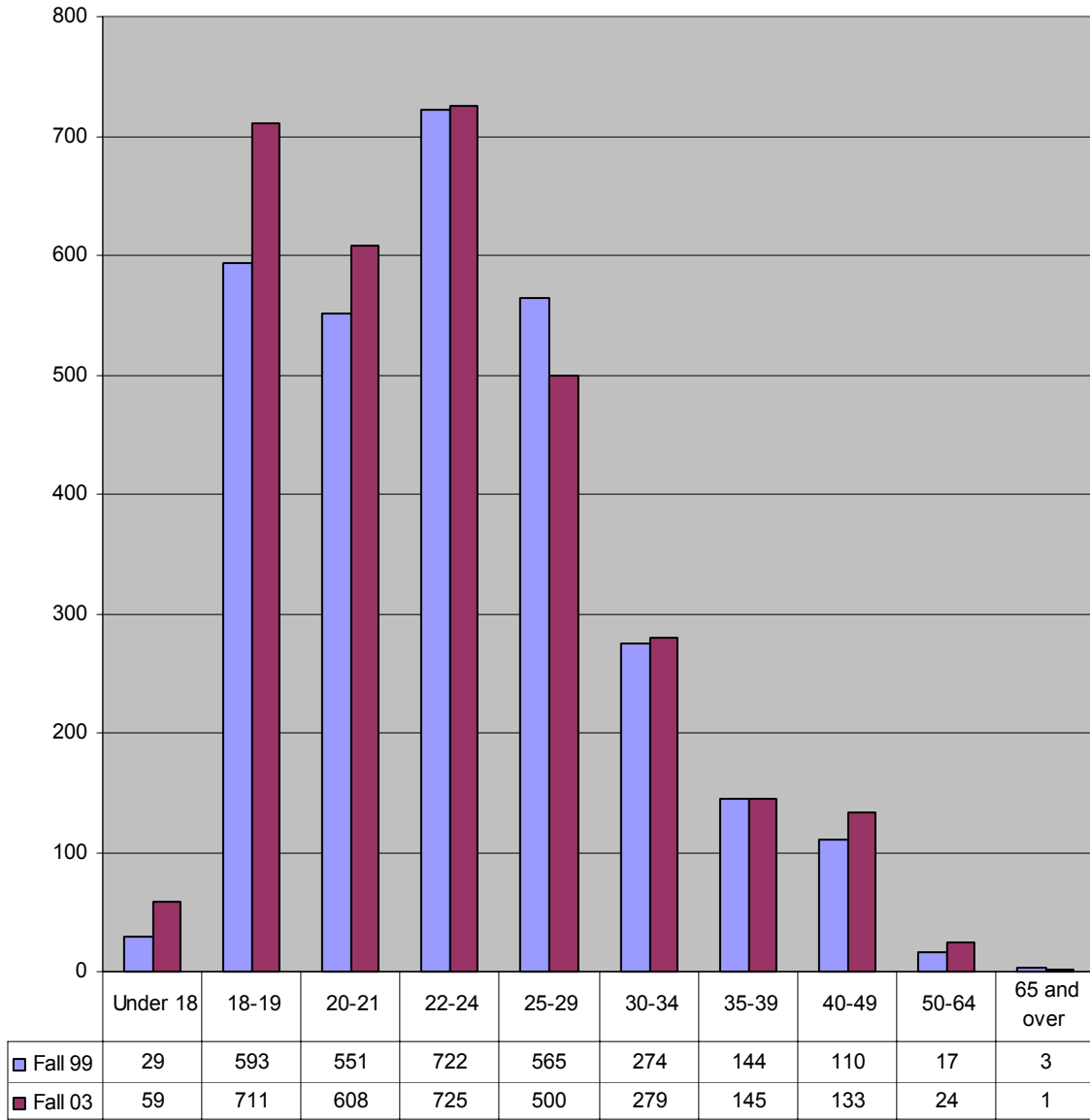


Headcount Enrollment by Race/Ethnicity Fall 04



In the past five years, the proportion of Blacks increased by 4 percentage points.

**Distribution of Undergraduate Students by Age
Fall 99 vs Fall 03**



Age Range



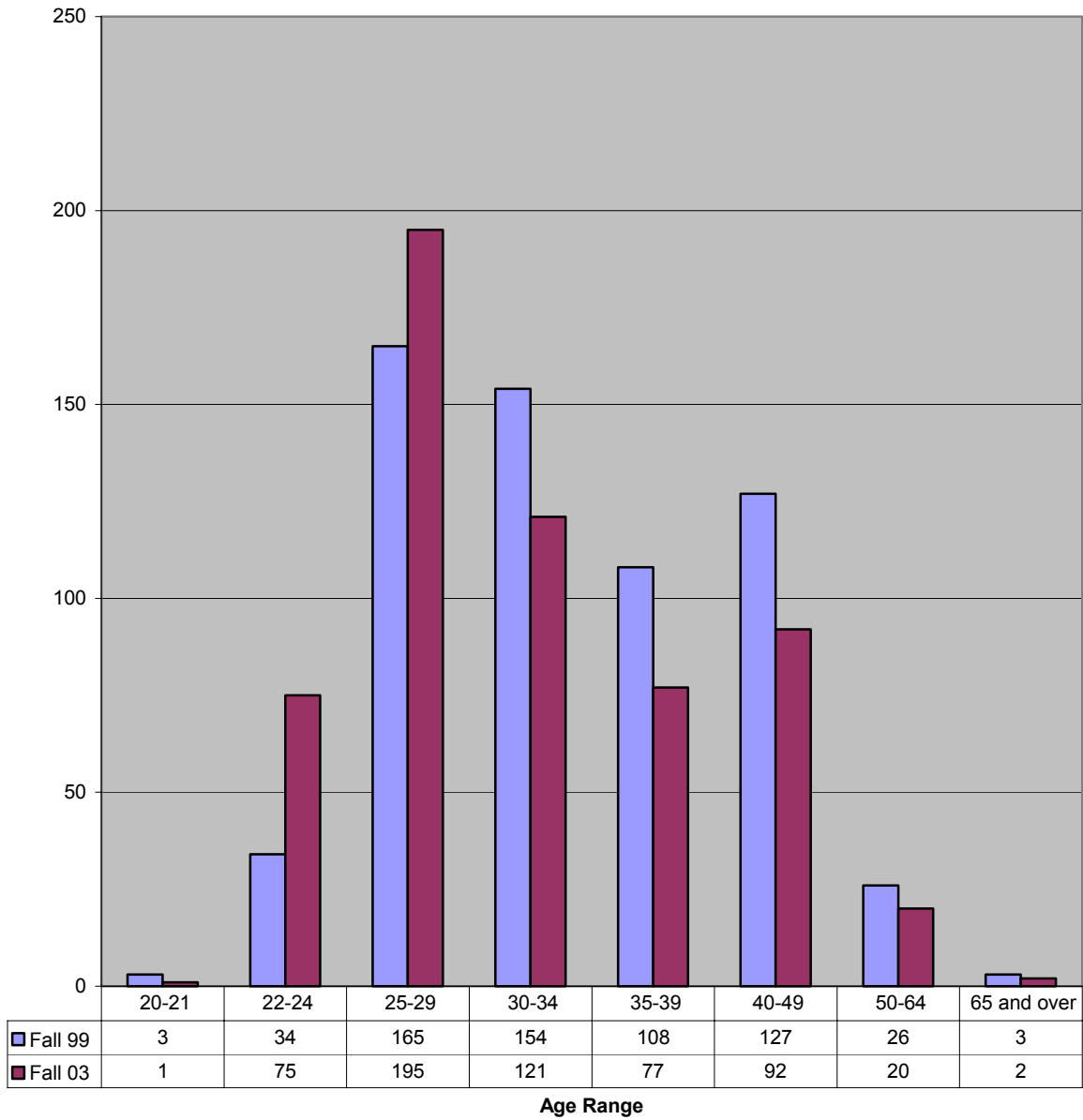
The number of undergraduate students under 25 years has increased by 11% over the past five years.




The number of undergraduate students 25 years and older has decreased by 3% over the past five years.

Source: IPEDS Fall Enrollment Survey (not updated in 04)

Distribution of Graduate Students by Age Fall 99 vs Fall 03

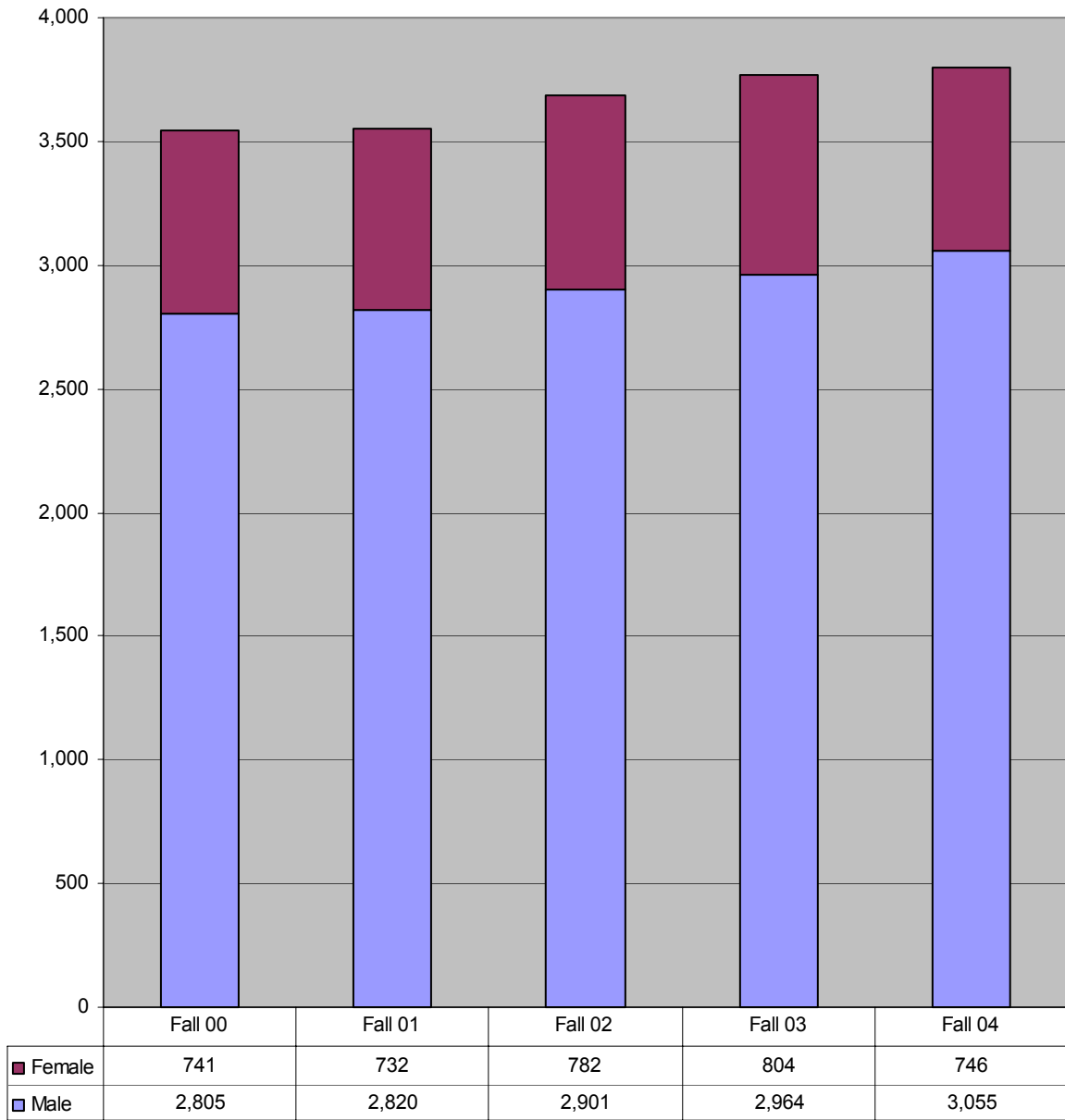


 The number of grad students under 25 years has increased by 105% over the past five years.

 The number of grad students 25 years and older has decreased by 13% over the past five years.

Source: IPEDS Fall Enrollment Survey (not updated in 04)

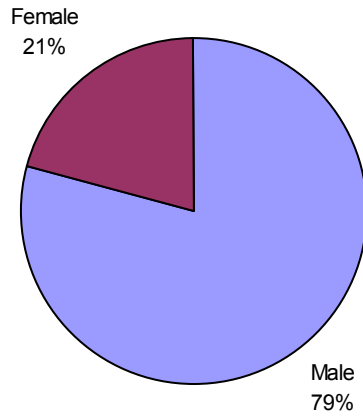
Headcount Enrollment by Gender Fall 00-04



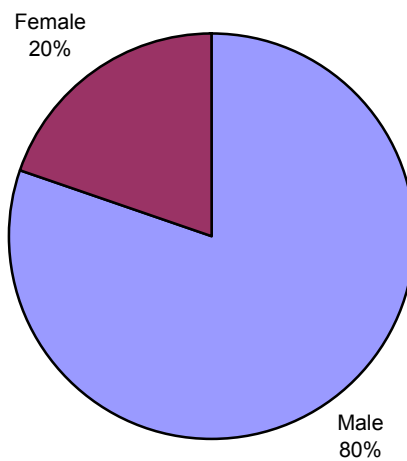
Female enrollment increased by 1% and male enrollment increased by 9% over the past five years.

Sources: IPEDS Fall Enrollment Survey

Headcount Enrollment by Gender Fall 00

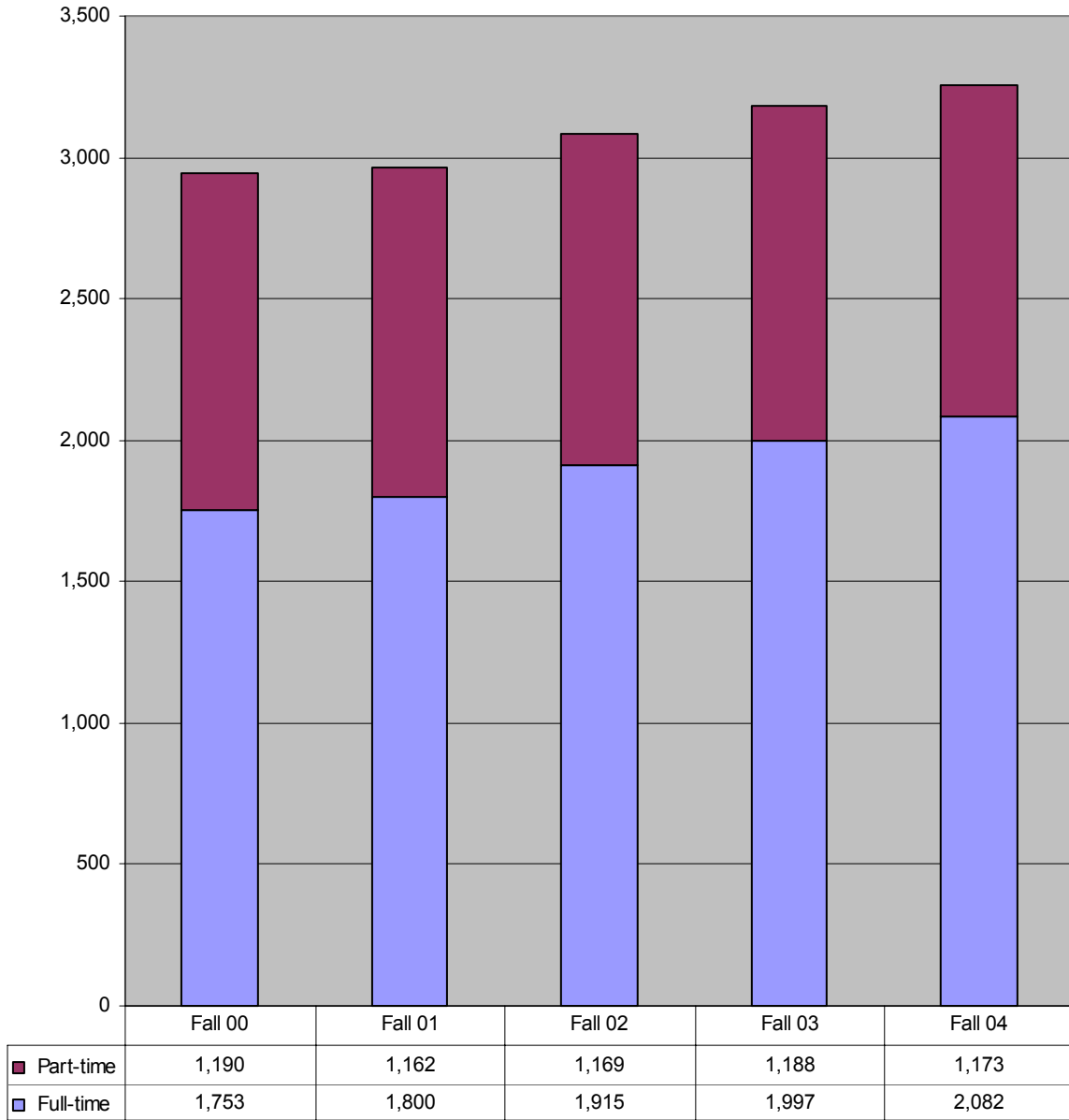


Headcount Enrollment by Gender Fall 04



 The proportion of females has declined by one percentage point over the last five years.

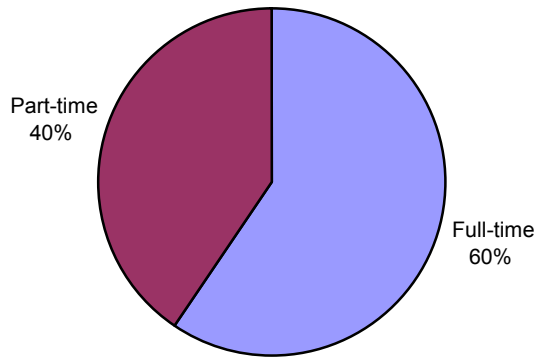
Undergraduate Headcount Enrollment by Status Fall 00-04



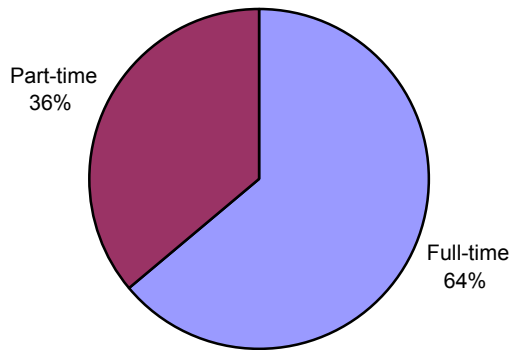
Over the past five years, full-time undergraduate enrollment grew by 19% while part-time undergraduate enrollment declined by 1%.

Source: IPEDS Fall Enrollment Survey

Undergraduate Headcount Enrollment by Status Fall 00



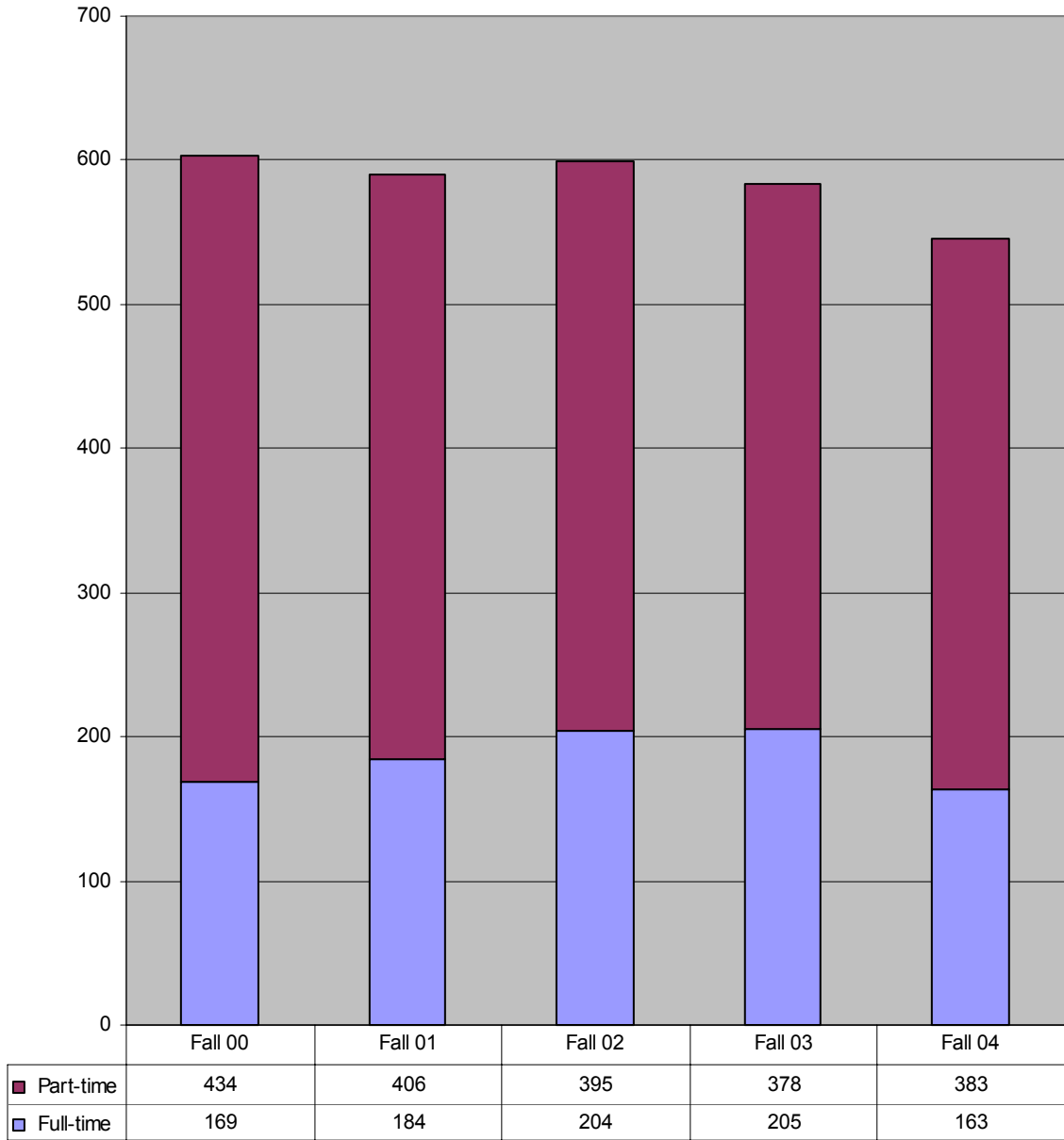
Undergraduate Headcount Enrollment by Status Fall 04




Over the past five years, the proportion of full-time undergraduate students grew by 4 percentage points.

Source: IPEDS Fall Enrollment Survey

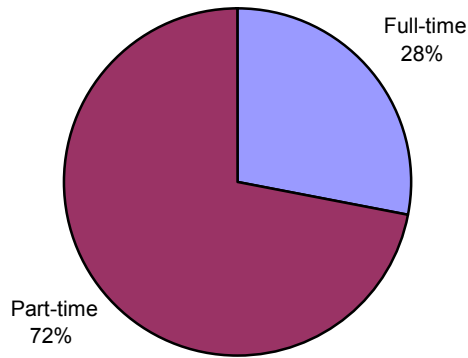
**Graduate Headcount Enrollment by Status
Fall 00-04**



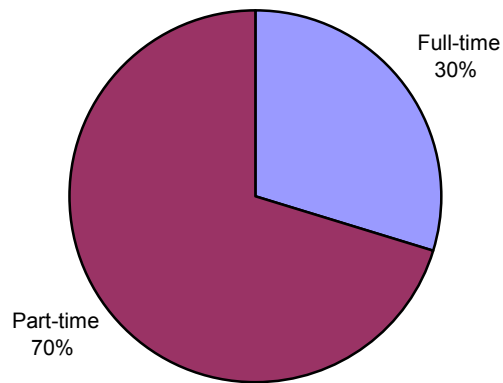
 **Over the past five years, full-time graduate enrollment declined by 4% while part-time graduate enrollment declined by 12%.**

Source: IPEDS Fall Enrollment Survey

Graduate Headcount Enrollment by Status Fall 00

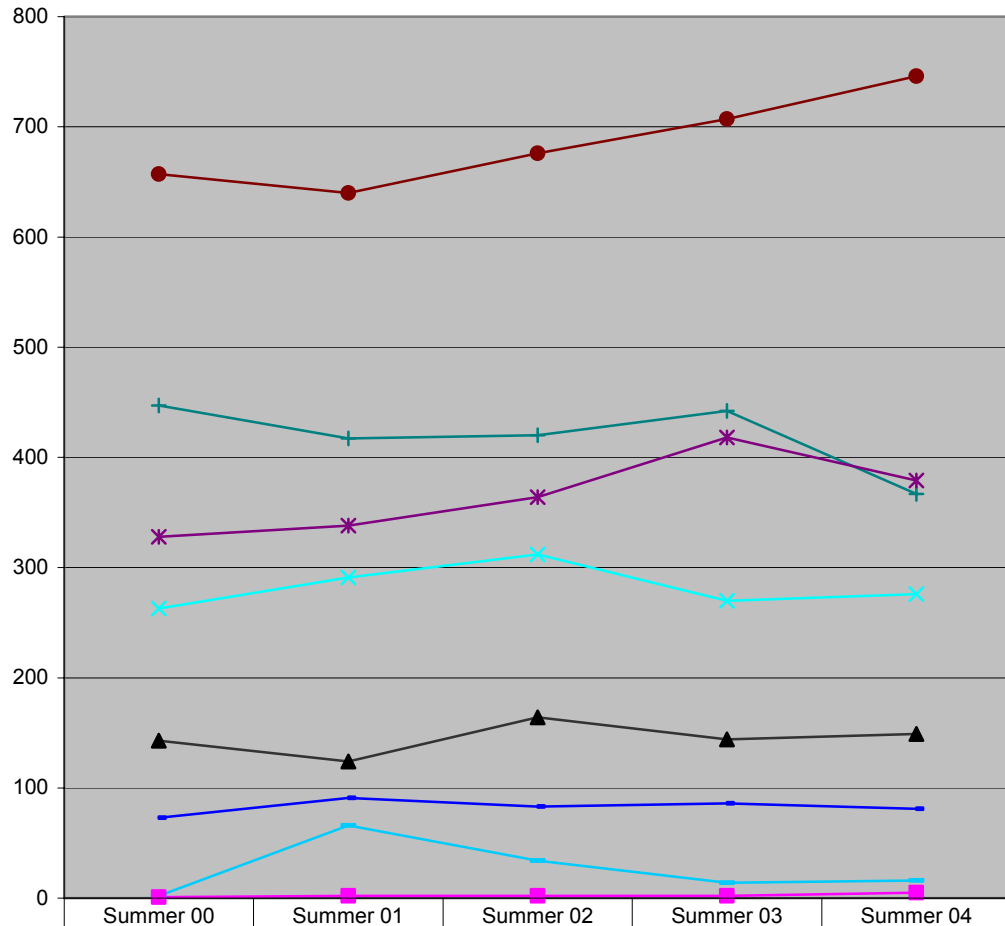


Graduate Headcount Enrollment by Status Fall 04



Over the past five years, the proportion of full-time graduate students grew by 2 percentage points.

Total Enrollment by Student Type Summer 00-04



	Summer 00	Summer 01	Summer 02	Summer 03	Summer 04
Other*	2	66	34	14	16
Transient	73	91	83	86	81
Graduate	447	417	420	442	367
Senior	657	640	676	707	746
Junior	328	338	364	418	379
Sophomore	263	291	312	270	276
Freshman	143	124	164	144	149
Joint	1	2	2	2	5

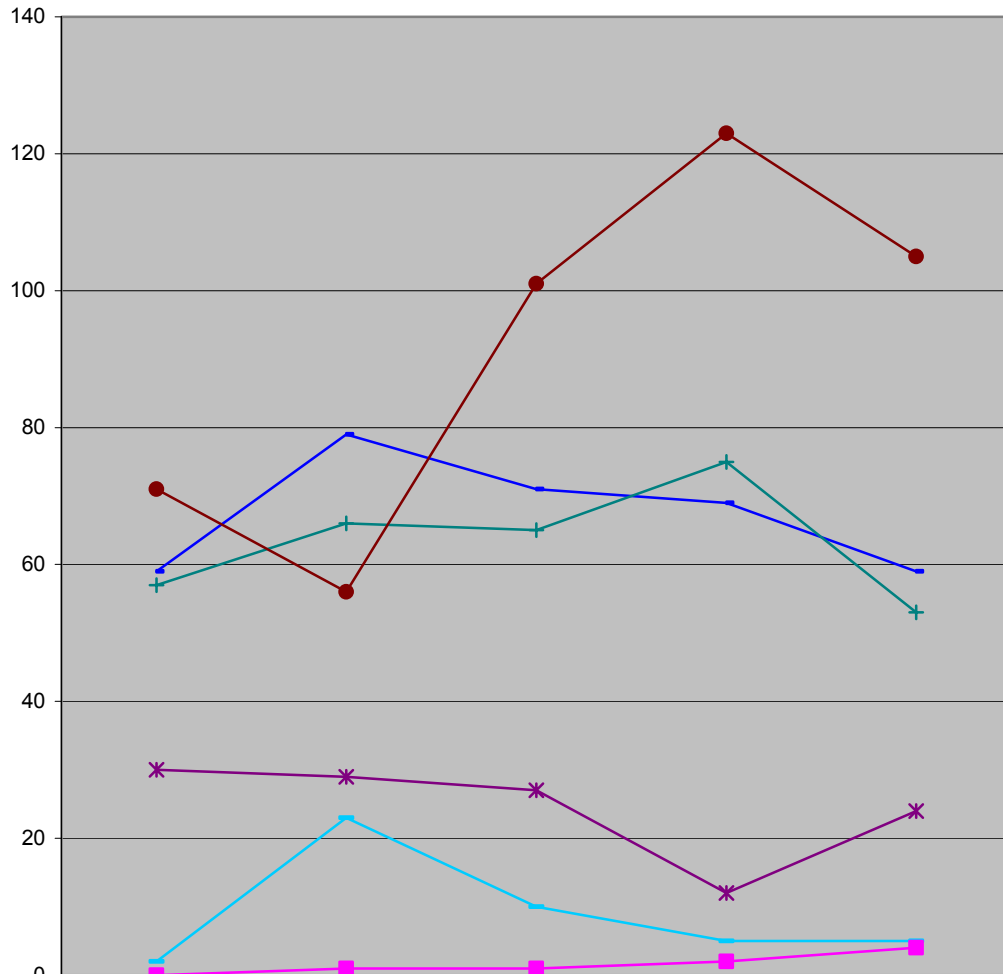
“Other” includes students who already have a bachelors degree but are enrolled in ug courses, and auditors.



Over the past five years, the number of graduate students declined by 18%.

Source: USG SIRS Summer Enrollment Report

New Students by Type Summer 00-04



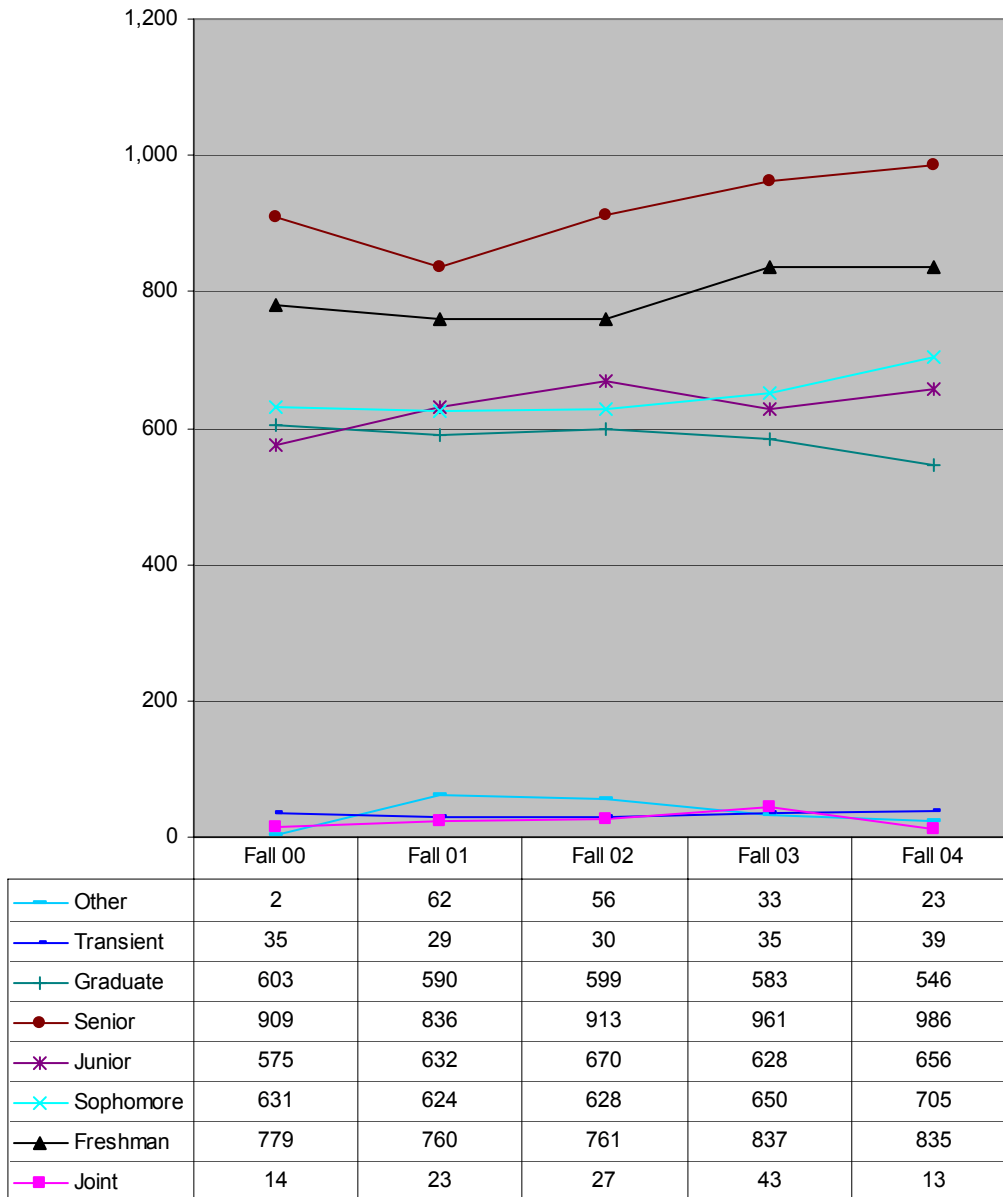
	Summer 00	Summer 01	Summer 02	Summer 03	Summer 04
Other*	2	23	10	5	5
Transient	59	79	71	69	59
Graduate	57	66	65	75	53
Transfer	71	56	101	123	105
Freshman	30	29	27	12	24
Joint	0	1	1	2	4



Over the past five years, the number of new freshmen declined by 20%.

Source: USG SIRS Summer Enrollment Report

Total Enrollment by Student Type Fall 00-04



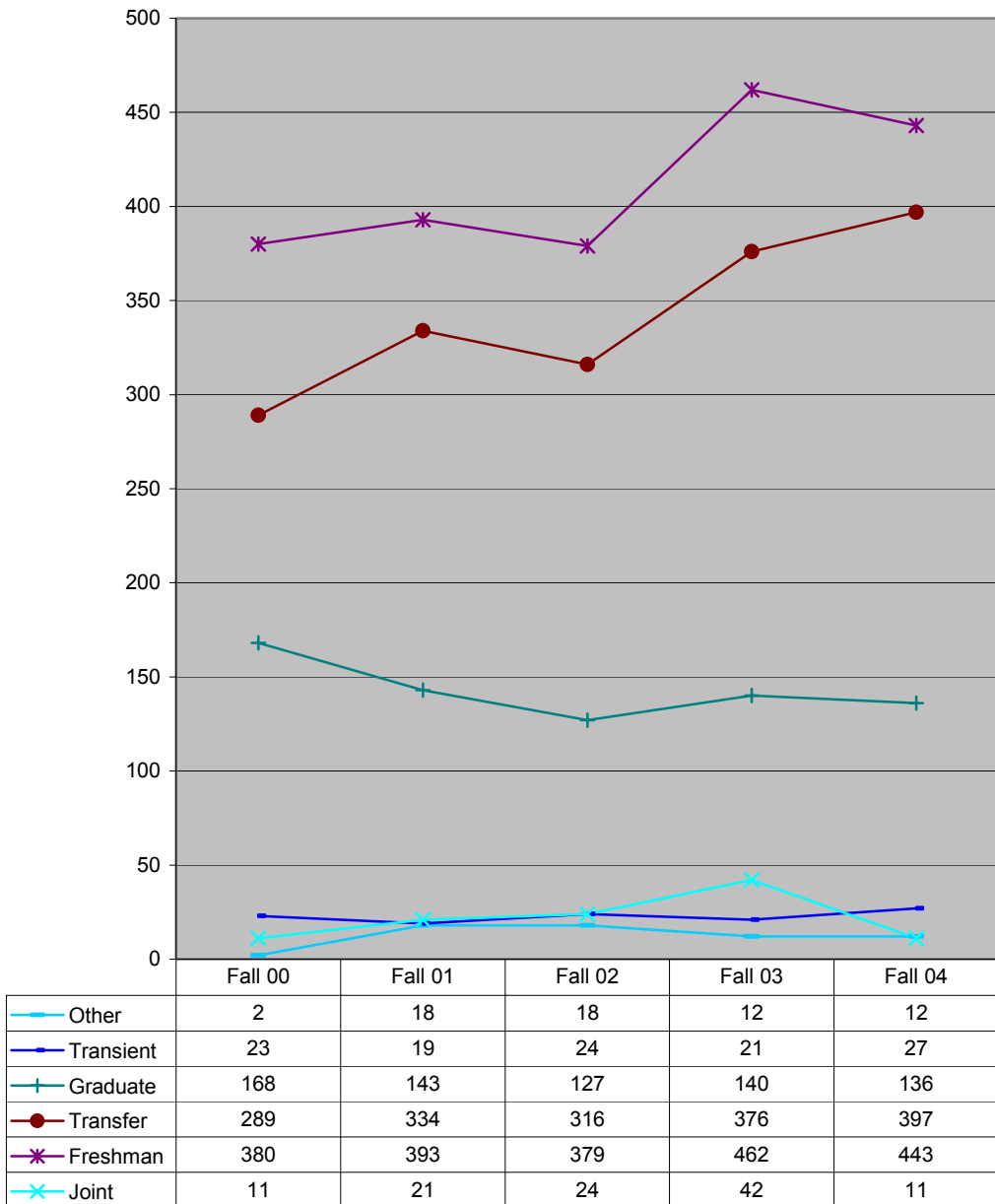
“Other” includes students who already have a bachelors degree but are enrolled in ug courses, and auditors.



Over the past five years, the number of graduate students declined by 9%.

Source: USG SIRS Fall Enrollment Report

New Students by Type Fall 00-04



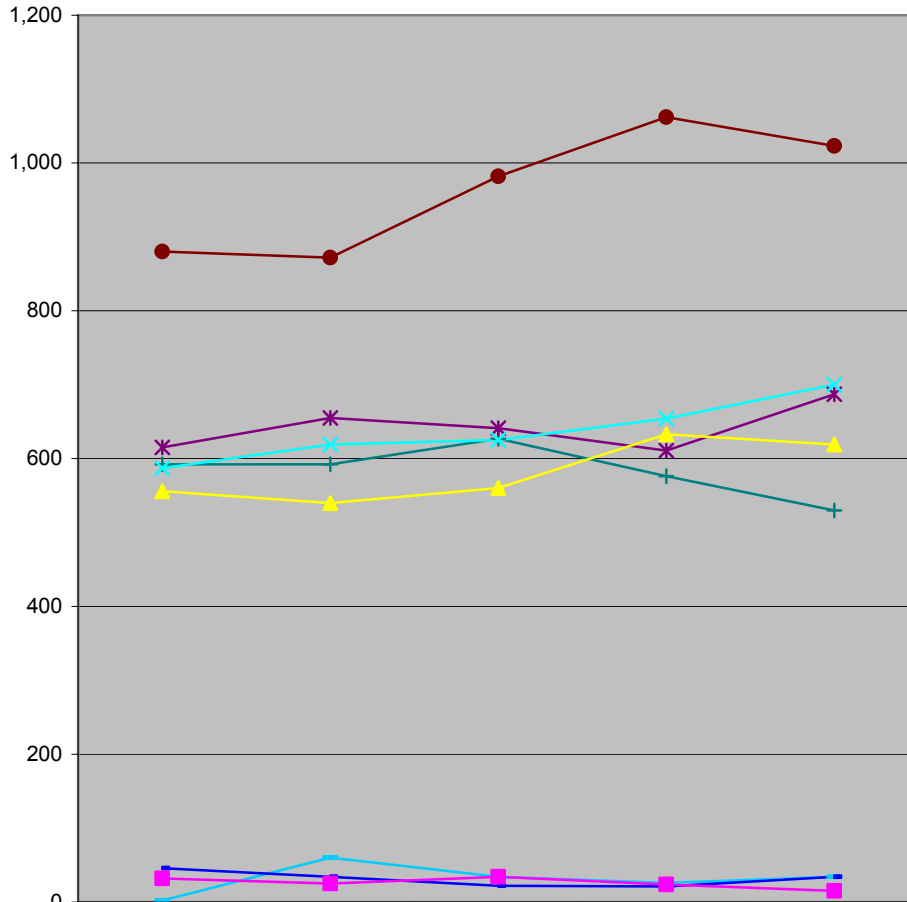
“Other” includes students who already have a bachelors degree but are enrolled in ug courses, and auditors.



Over the past five years, the number of new students in all categories increased, except for graduate students.

Source: USG SIRS Fall Enrollment Report

Total Enrollment by Student Type Spring 01-05



	Spring 01	Spring 02	Spring 03	Spring 04	Spring 05
Other	2	60	34	26	34
Transient	46	34	22	21	34
Graduate	592	592	627	576	530
Senior	880	872	982	1,062	1,023
Junior	615	655	641	611	687
Sophomore	587	619	625	654	700
Freshman	556	540	560	633	619
Joint	32	25	34	24	15

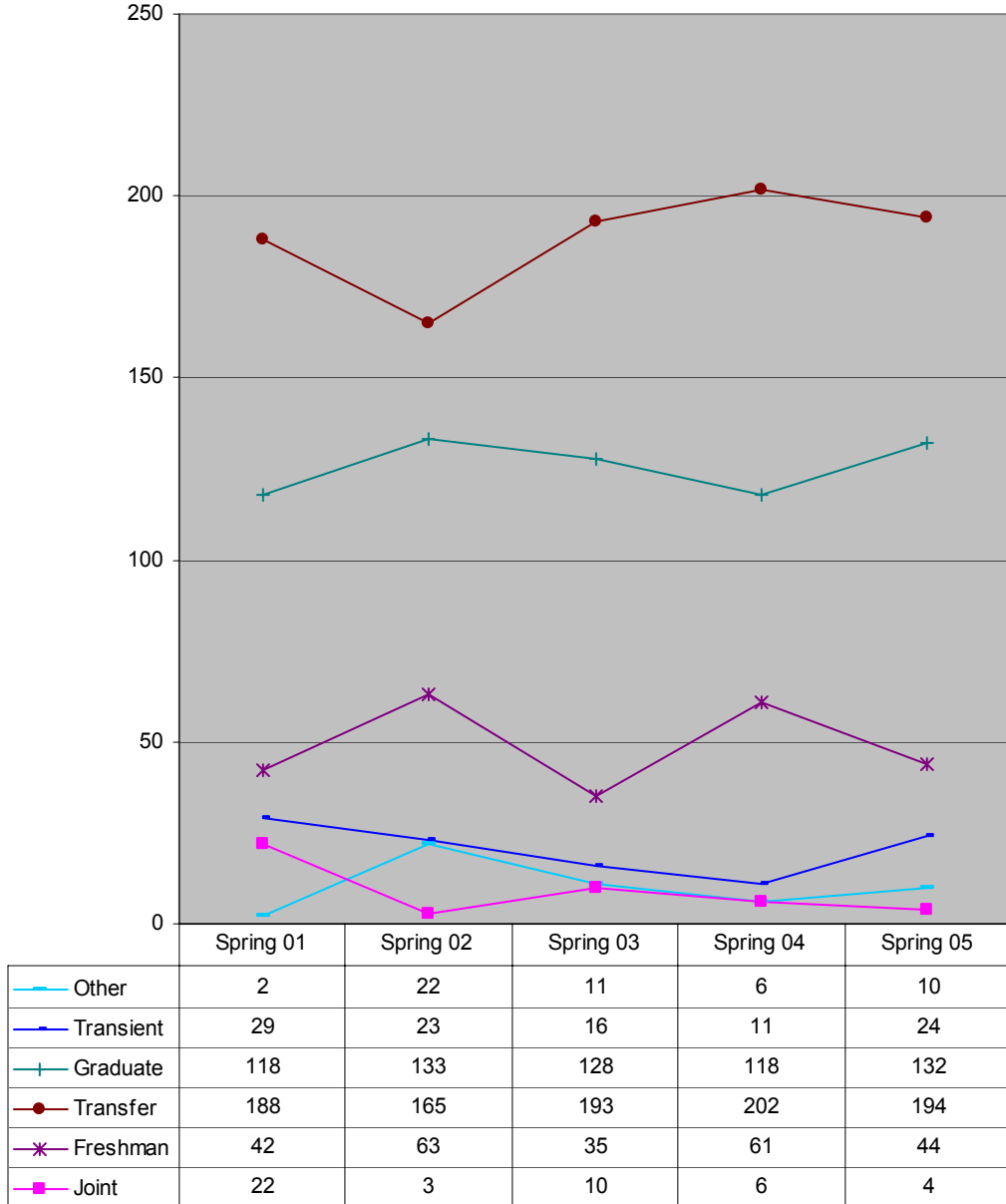
“Other” includes students who already have a bachelors degree but are enrolled in ug courses, and auditors.



Over the past five years, all categories of students, except graduates, transients, and joint enrollments, increased.

Source: USG SIRS Spring Enrollment Report

New Students by Type
Spring 01-05



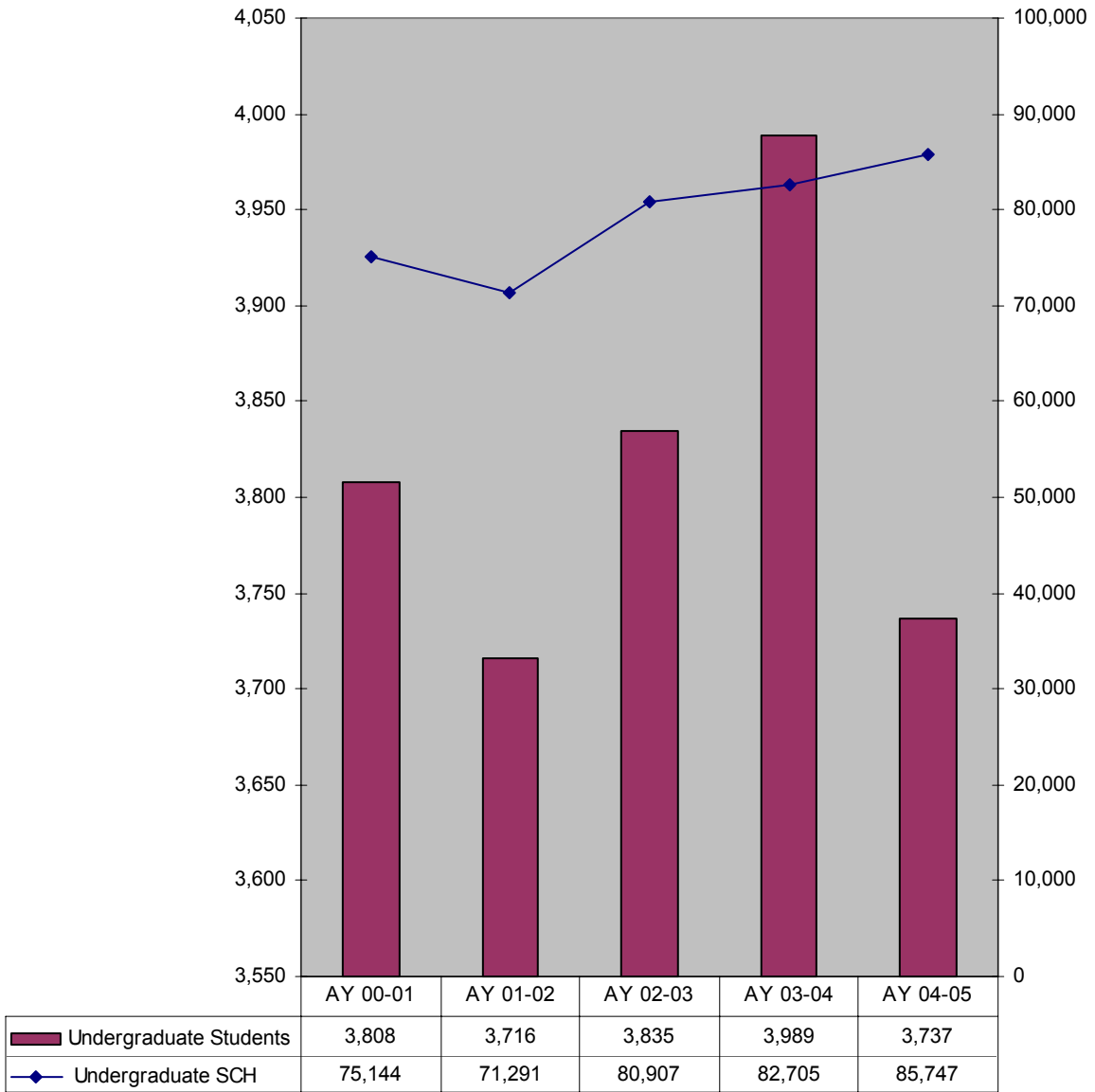
“Other” includes students who already have a bachelors degree but are enrolled in ug courses, and auditors.



Over the past five years, all categories of students, except transients and joint enrollments, increased.

Source: USG SIRS Spring Enrollment Report

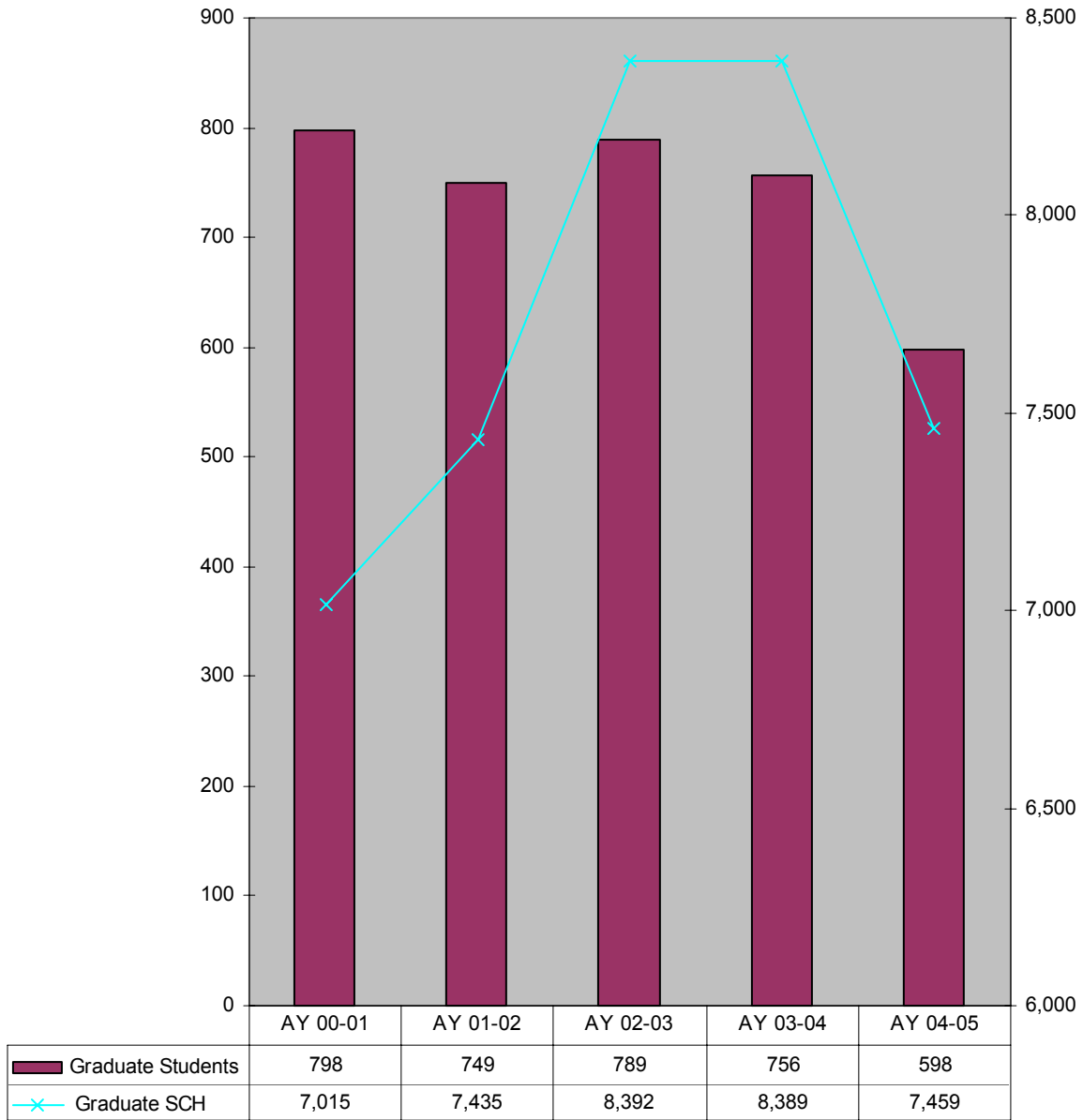
Unduplicated Undergraduate Headcount vs Student Credit Hours AY 00 - AY 04




Undergraduate headcount decreased by 1% but undergraduate credit hours increased by 14% over the past five years.

Source: SPSU Banner

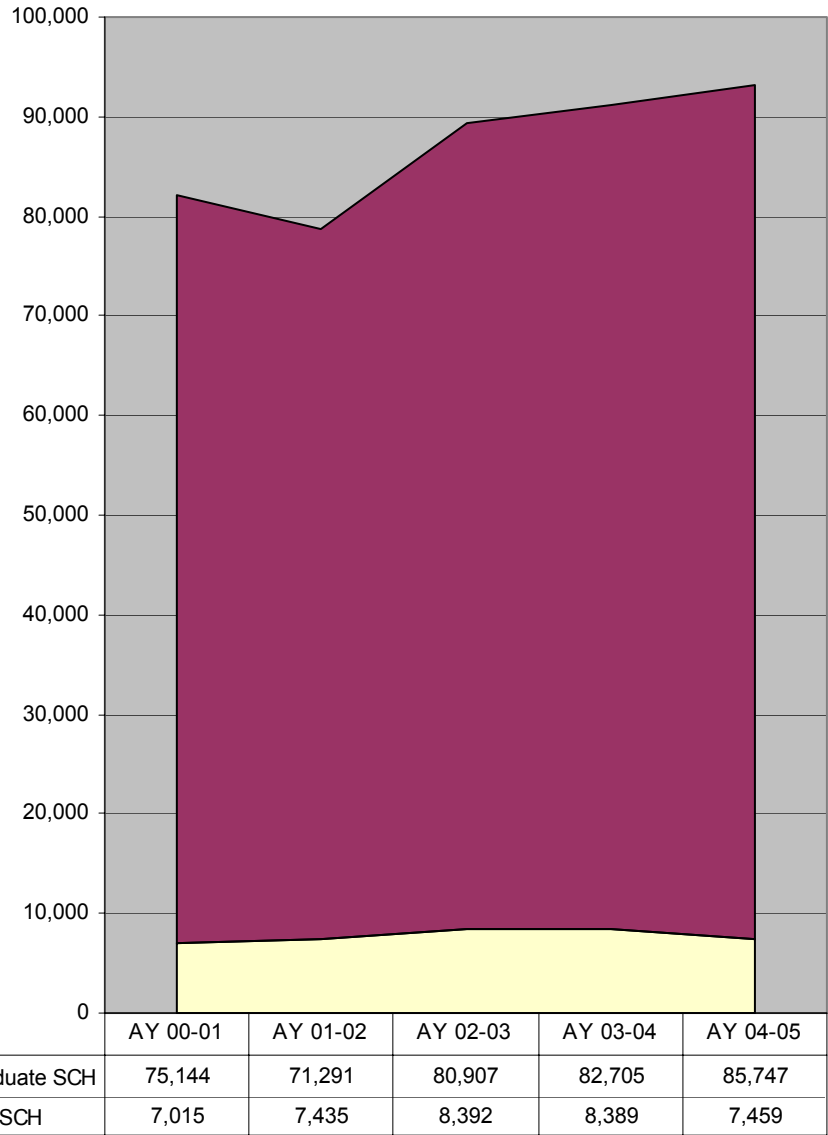
Unduplicated Graduate Headcount vs Student Credit Hours AY 00 - AY 04



 Graduate headcount decreased by 19% but graduate credit hours increased by 6% over the past five years.

Source: SPSU Banner

Student Credit Hours by Level AY 00 - AY 04



Even though graduate student credit hours increased by 6%, and undergraduate student credit hours increased by 14% during the past five years, the proportion of graduate student credit hours only declined by 1 percentage point.

Source: USG Curriculum Inventory Report

**Top Feeder Institutions of Transfer Students by School
AY 04 – AY 05**

All Majors (5 or more)		Arch/CET/Const (continued)	
Georgia Perimeter College	55	Georgia Southern University	11
Chattahoochee Technical College	45	Auburn University	10
Georgia Institute of Technology	41	Gainesville College	9
Kennesaw State University	36	Georgia State University	9
Floyd College	28	Chattahoochee Technical College	8
Georgia State University	23	Clayton College & State University	5
Gainesville College	22	Dalton State College	5
Georgia Southern University	17	Gordon College	5
Gwinnett Technical College	15	Clemson University	4
DeKalb Technical College	13	Georgia Military College	4
Auburn University	12	International College	4
Clayton College & State University	12	Middle Georgia College	4
Dalton State College	10	University of West Georgia	4
DeVry Institute of Technology	10	Armstrong Atlantic State University	3
University of West Georgia	10	Athens Technical College	3
Athens Technical College	8	Atlanta Metropolitan College	3
Atlanta Metropolitan College	8	Augusta State University	3
Gordon College	8	Coastal Georgia Community College	3
Chattanooga State Technical Community C	7	Columbus State University	3
International College	7	Darton College	3
Georgia Military College	6	Gwinnett Technical College	3
Middle Georgia College	6	Valdosta State University	3
Borough of Manhattan Community C	5	Eng Tech/Mgt (3 or more)	
Columbus State University	5	Georgia Perimeter College	26
Georgia College & State University	5	Chattahoochee Technical College	22
Computing/SE (3 or more)		Georgia Institute of Technology	16
Chattahoochee Technical College	10	Kennesaw State University	15
Georgia Institute of Technology	8	Floyd College	11
Georgia Perimeter College	8	Gainesville College	11
Gwinnett Technical College	6	DeKalb Technical College	8
Georgia State University	5	DeVry Institute of Technology	7
DeKalb Technical College	3	Georgia State University	7
DeVry Institute of Technology	3	Gwinnett Technical College	6
Floyd College	3	Georgia Southern University	5
Arts & Sci (3 or more)		University of West Georgia	5
Kennesaw State University	6	Athens Technical College	4
Chattahoochee Technical College	5	Clayton College & State University	4
Georgia Institute of Technology	5	Atlanta Metropolitan College	3
Chattanooga State Technical Community C	3	Borough of Manhattan Community College	3
Georgia Perimeter College	3	Chattanooga State Technical Community C	3
Arch/CET/Const (3 or more)		Community College of the Air Force	3
Georgia Perimeter College	18	Dalton State College	3
Floyd College	13	Georgia College & State University	3
Kennesaw State University	13	International College	3
Georgia Institute of Technology	12		

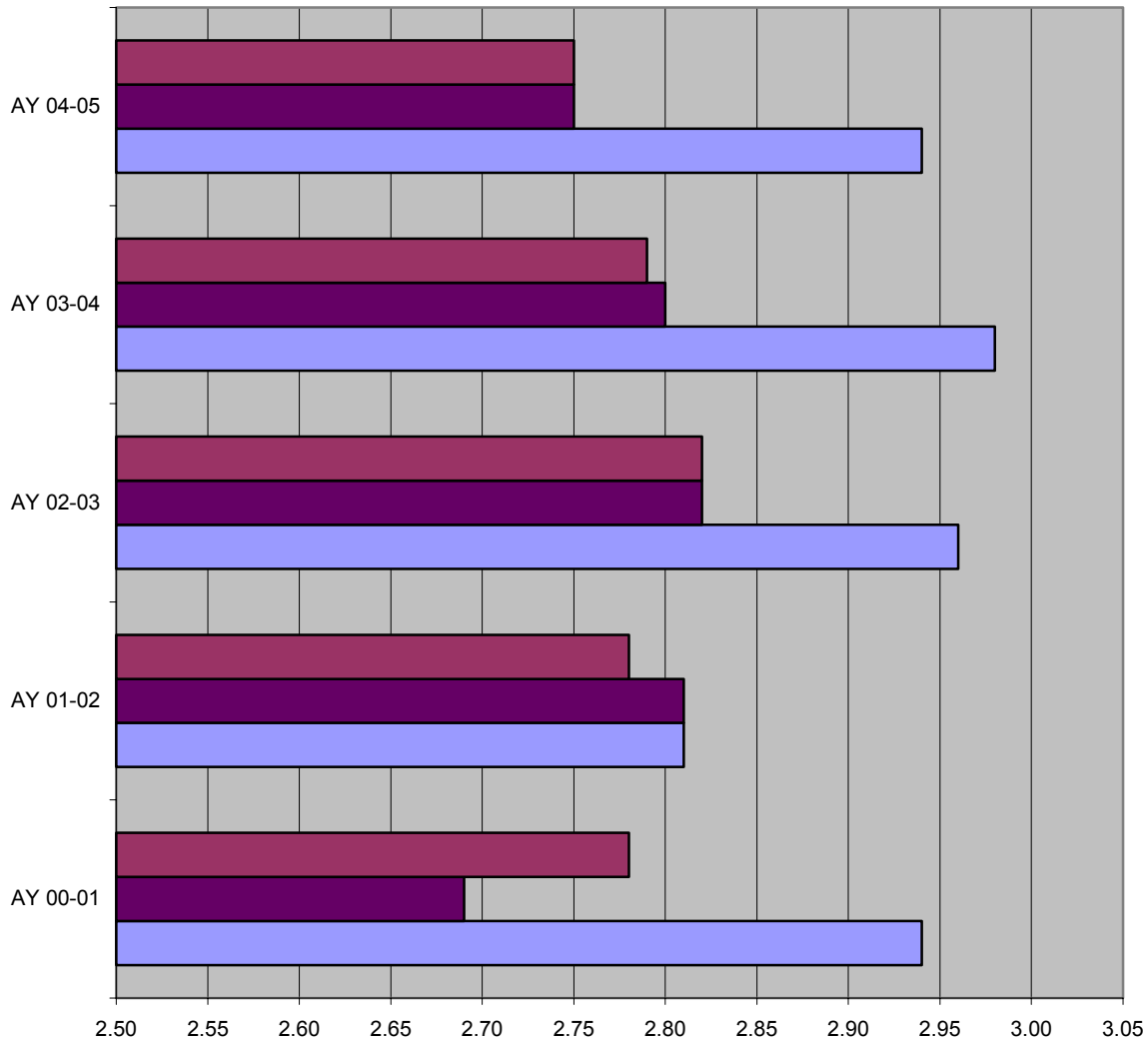
**Grade Distribution by Term
AY 00 – AY 04**

	Percent	Percent	Percent	Percent	Percent	Percent	Average
	A's	B's	C's	D's	F's	Other*	GPA
AY 00-01							
Summer	33%	28%	14%	4%	5%	16%	2.94
Fall	27%	27%	18%	6%	8%	15%	2.69
Spring	30%	27%	16%	5%	7%	15%	2.78
AY 01-02							
Summer	30%	27%	16%	5%	6%	14%	2.81
Fall	30%	29%	17%	5%	6%	12%	2.81
Spring	30%	28%	17%	5%	7%	13%	2.78
AY 02-03							
Summer	36%	27%	13%	4%	6%	12%	2.96
Fall	31%	27%	16%	5%	6%	14%	2.82
Spring	30%	27%	15%	5%	7%	16%	2.82
AY 03-04							
Summer	36%	28%	14%	4%	5%	13%	2.98
Fall	29%	30%	16%	5%	6%	14%	2.80
Spring	28%	30%	16%	5%	7%	14%	2.79
AY 04-05							
Summer	33%	29%	17%	4%	5%	12%	2.94
Fall	28%	29%	17%	6%	7%	13%	2.75
Spring	29%	28%	17%	5%	8%	13%	2.75


*I, IP, K, NR, S, U, V, W, WF

Source: SPSU Banner

**Average GPA by Term
AY 00 - AY 04**

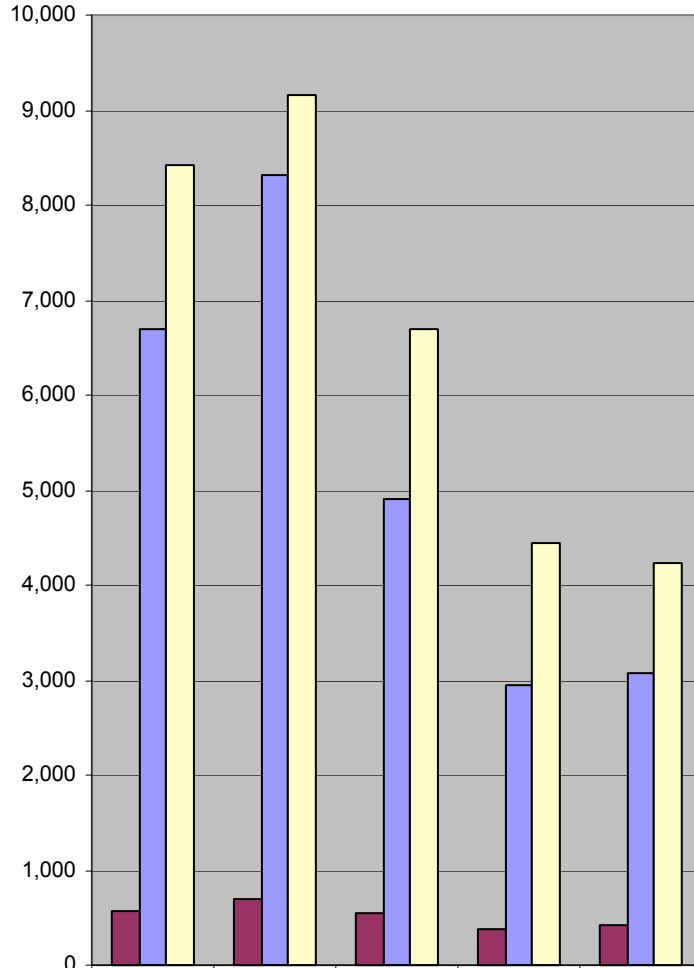


	AY 00-01	AY 01-02	AY 02-03	AY 03-04	AY 04-05
■ Spring	2.78	2.78	2.82	2.79	2.75
■ Fall	2.69	2.81	2.82	2.80	2.75
■ Summer	2.94	2.81	2.96	2.98	2.94

 Over the past five years, the average gpa for summer remained the same, the average gpa for fall increased by 2% and the average gpa for spring decreased by 1%.

Source: SPSU Banner

Continuing Education Enrollment FY 00 - FY 04



■ Programs/Courses	571	700	537	389	420
■ Participants	6,696	8,315	4,906	2,938	3,075
■ Con Ed Units (CEUs)	8,424	9,152	6,694	4,443	4,237



The number of programs/courses declined by 26%, the number of participants declined by 54% and the number of CEUs declined by 50% over the past five years.

Source: Office of Continuing Education