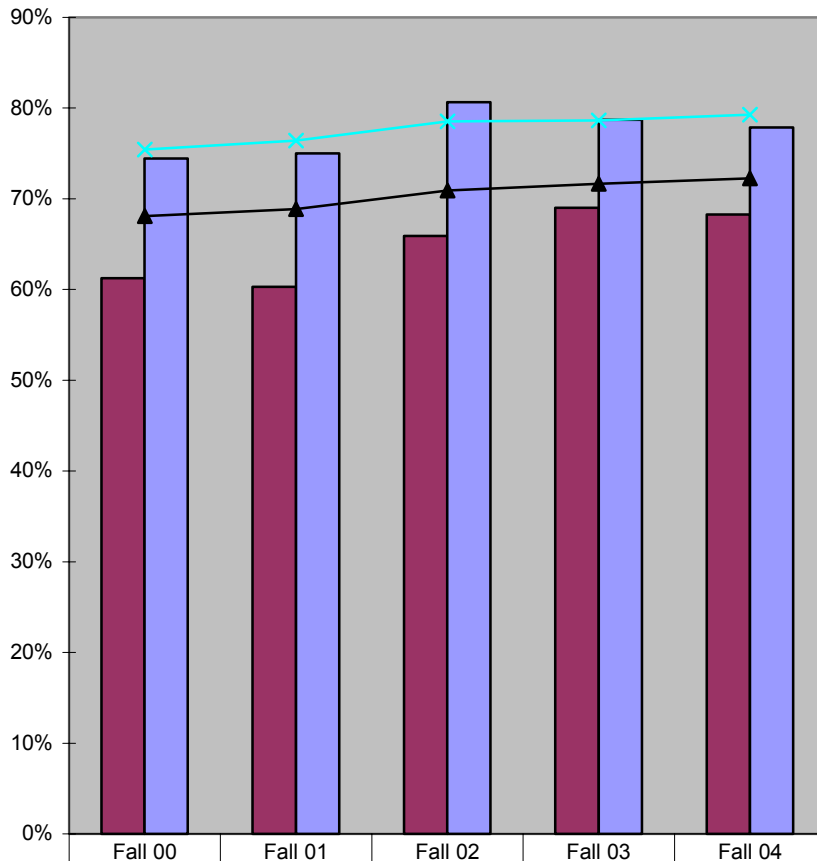


**Fall-to-Fall Retention Rates  
First-Time Full-time Freshmen  
SPSU vs USG State Universities  
Fall 00-04**



	Fall 00	Fall 01	Fall 02	Fall 03	Fall 04
SPSU Freshmen Retained at SPSU	61%	60%	66%	69%	68%
SPSU Freshmen Retained in System	74%	75%	81%	79%	78%
Avg State U Freshmen Retained at Institution	68%	69%	71%	72%	72%
Avg State U Retained in System	75%	76%	79%	79%	79%



**In Fall 04, the State Universities of the University System of Georgia reported an average freshman retention rate 4 percentage points higher than SPSU's freshman retention rate.**

Source: USG Retention Report

**Fall-to-Fall Retention and Graduation Rates**  
**First-time Full-time Freshmen by Major**  
**Fall 98-03**

<b>Fall 98</b>	<b>Number Enrolled</b>	<b>% Retained after 1 year</b>	<b>% Retained after 2 years</b>	<b>% Retained after 3 years</b>	<b>% Grad* in 4 years</b>	<b>% Grad* in 5 years</b>	<b>% Grad* in 6 years</b>
Apparel/Textile Engineering Technology	9	44%	33%	22%	11%	33%	33%
Civil Engineering Technology	29	48%	45%	31%	14%	24%	31%
Computer Engineering Technology	40	63%	45%	35%	10%	23%	23%
Computer Science	78	56%	41%	24%	9%	13%	17%
Construction	12	67%	42%	25%	8%	25%	33%
Electrical Engineering Technology	35	66%	43%	20%	6%	20%	31%
Industrial Distribution	1	0%	0%	0%	0%	100%	100%
Industrial Engineering Technology	6	67%	33%	17%	0%	0%	0%
Management	8	63%	38%	38%	13%	13%	13%
Mathematics	1	0%	0%	0%	0%	0%	0%
Mechanical Engineering Technology	36	39%	14%	11%	0%	17%	17%
Physics	4	50%	25%	25%	25%	25%	25%
Pre-Architecture	56	38%	20%	7%	5%	18%	25%
Technical and Professional Communication	1	0%	0%	0%	0%	0%	0%
Telecommunications Engineering Technology	1	100%	0%	0%	0%	0%	0%
<b>Fall 99</b>							
Apparel/Textile Engineering Technology	10	70%	70%	50%	30%	60%	
Civil Engineering Technology	13	54%	46%	31%	0%	0%	
Computer Engineering Technology	41	54%	39%	20%	7%	15%	
Computer Science	79	49%	29%	22%	9%	19%	
Construction	11	46%	55%	46%	0%	18%	
Electrical Engineering Technology	40	63%	35%	33%	13%	23%	
General Studies/Undeclared	4	0%	0%	0%	0%	0%	
Industrial Engineering Technology	13	77%	77%	69%	15%	54%	
Management	5	60%	40%	40%	20%	20%	
Mathematics	5	60%	40%	40%	20%	20%	
Mechanical Engineering Technology	38	55%	32%	26%	3%	16%	
Physics	2	0%	0%	0%	0%	0%	
Pre-Architecture	34	59%	41%	27%	3%	6%	
Surveying and Mapping	2	0%	50%	50%	0%	0%	
Technical and Professional Communication	5	40%	0%	0%	0%	20%	
Telecommunications Engineering Technology	6	67%	50%	33%	0%	33%	

\*Graduated either in program they started or another program at SPSU.

**Fall-to-Fall Retention and Graduation Rates  
First-time Full-time Freshmen by Major (continued)**

<b>Fall 00</b>	<b>Number Enrolled</b>	<b>% Retained after 1 year</b>	<b>% Retained after 2 years</b>	<b>% Retained after 3 years</b>	<b>% Grad* in 4 years</b>
Apparel/Textile Engineering Technology	4	50%	50%	25%	0%
Civil Engineering Technology	18	50%	22%	22%	6%
Computer Engineering Technology	38	68%	58%	40%	21%
Computer Science	89	46%	30%	23%	11%
Construction	8	75%	38%	50%	25%
Electrical Engineering Technology	26	39%	27%	19%	4%
General Studies/Undeclared	1	100%	0%	0%	0%
Industrial Engineering Technology	6	50%	17%	17%	0%
Management	5	60%	40%	40%	0%
Mathematics	1	100%	100%	100%	100%
Mechanical Engineering Technology	47	43%	23%	23%	11%
Physics	4	50%	50%	25%	0%
Pre-Architecture	53	51%	34%	30%	2%
Surveying and Mapping	1	0%	0%	0%	0%
Technical and Professional Communication	1	100%	100%	100%	0%
Telecommunications Engineering Technology	2	50%	0%	0%	0%
<b>Fall 01</b>					
Apparel/Textile Engineering Technology	11	55%	36%	18%	
Civil Engineering Technology	25	44%	32%	24%	
Computer Engineering Technology	44	66%	34%	23%	
Computer Science	95	57%	22%	16%	
Construction	9	78%	89%	67%	
Electrical Engineering Technology	21	52%	24%	24%	
General Studies/Undeclared	24	29%	8%	0%	
Industrial Engineering Technology	4	100%	75%	25%	
Management	6	33%	14%	14%	
Mathematics	1	0%	0%	0%	
Mechanical Engineering Technology	40	80%	45%	28%	
Physics	6	50%	33%	33%	
Pre-Architecture	56	46%	35%	15%	
Software Engineering	1	0%	0%	0%	
Surveying and Mapping	2	50%	50%	50%	
Telecommunications Engineering Technology	11	55%	27%	9%	

\*Graduated either in program they started or another program at SPSU.

**Fall-to-Fall Retention and Graduation Rates  
First-time Full-time Freshmen by Major (continued)**

<b>Fall 02</b>	<b>Number Enrolled</b>	<b>% Retained after 1 year</b>	<b>% Retained after 2 years</b>
Apparel/Textile Engineering Technology	5	40%	40%
Biology	1	0%	0%
Civil Engineering Technology	21	67%	33%
Computer Engineering Technology	31	45%	26%
Computer Science	70	57%	39%
Construction	15	93%	86%
Electrical Engineering Technology	24	63%	42%
General Studies/Undeclared	2	0%	0%
Industrial Engineering Technology	7	71%	57%
Information Technology	7	57%	43%
Management	3	0%	0%
Mathematics	5	60%	20%
Mechanical Engineering Technology	47	62%	43%
Physics	3	100%	100%
Pre-Architecture	55	58%	35%
Software Engineering	11	64%	27%
Surveying and Mapping	7	57%	29%
Technical and Professional Communication	2	100%	0%
Telecommunications Engineering Technology	4	50%	50%
<b>Fall 03</b>			
Apparel/Textile Engineering Technology	11	36%	
Biology	8	88%	
Civil Engineering Technology	37	70%	
Computer Engineering Technology	28	46%	
Computer Science	50	48%	
Construction	13	62%	
Electrical Engineering Technology	39	69%	
General Studies/Undeclared	2	0%	
Industrial Engineering Technology	6	33%	
Information Technology	9	44%	
International Studies/Global Tech	1	0%	
International Technical Communication	1	100%	
Management	6	50%	
Mathematics	3	67%	
Mechanical Engineering Technology	59	83%	
Physics	2	50%	
Pre-Architecture	87	71%	
Software Engineering	16	50%	
Surveying and Mapping	1	0%	
Technical and Professional Communication	0		
Telecommunications Engineering Technology	2	0%	



**Apparel/Textile Eng Tech and Industrial Eng Tech had the highest graduation rates of first-time freshmen after five years (60% and 54% respectively).**

**Fall-to-Fall Retention and Graduation Rates  
Transfers by Major  
Fall 98-03**

<b>Fall 98</b>	<b>Number Enrolled</b>	<b>% Retained after 1 year</b>	<b>% Retained after 2 years</b>	<b>% Grad* in 3 years</b>	<b>% Grad* in 4 years</b>	<b>% Grad* in 5 years</b>	<b>% Grad* in 6 years</b>
Apparel/Textile Eng Tech	5	40%	40%	0%	0%	20%	20%
Civil Engineering Technology	32	53%	53%	41%	50%	53%	56%
Computer Eng Tech	26	50%	42%	12%	23%	35%	38%
Computer Science	74	43%	24%	20%	26%	28%	31%
Construction	20	60%	55%	35%	50%	55%	55%
Electrical Eng Tech	39	56%	41%	15%	28%	38%	46%
Industrial Eng Tech	15	73%	73%	53%	73%	73%	73%
Management	16	56%	44%	13%	25%	25%	25%
Mathematics	5	40%	20%	0%	0%	20%	20%
Mechanical Eng Tech	30	53%	40%	13%	27%	33%	33%
Physics	2	50%	0%	0%	0%	0%	0%
Pre-Architecture	28	50%	25%	4%	4%	14%	32%
Surveying & Mapping	2	50%	50%	0%	0%	0%	0%
Tech & Prof Comm	3	0%	33%	33%	33%	33%	33%
<b>Fall 99</b>							
Apparel/Textile Eng Tech	5	20%	60%	0%	0%	0%	
Civil Engineering Technology	16	56%	50%	31%	31%	31%	
Computer Engineering Tech	21	43%	33%	14%	29%	43%	
Computer Science	69	50%	39%	26%	32%	35%	
Construction	22	59%	55%	27%	45%	50%	
Electrical Engineering Tech	37	35%	30%	14%	19%	27%	
General Studies/Undeclared	1	0%	0%	0%	0%	0%	
Industrial Distribution	4	0%	50%	0%	25%	25%	
Industrial Engineering Tech	12	67%	58%	42%	42%	42%	
Management	20	65%	55%	20%	35%	40%	
Mathematics	1	100%	0%	0%	0%	0%	
Mechanical Engineering Tech	30	67%	53%	17%	37%	37%	
Physics	2	100%	100%	50%	50%	50%	
Pre-Architecture	32	28%	19%	3%	9%	22%	
Surveying and Mapping	10	40%	50%	30%	40%	40%	
Tech & Prof Comm	6	33%	17%	17%	17%	17%	
Telecomm Eng Tech	5	60%	60%	0%	20%	20%	

\*Graduated either in program they started or another program at SPSU.

**Fall-to-Fall Retention and Graduation Rates  
Transfers by Major (continued)**

<b>Fall 00</b>				
All Majors	Unreliable Data in Banner for New Transfers			
	Number	% Retained	% Retained	% Grad*
<b>Fall 01</b>	Enrolled	after 1 year	after 2 years	in 3 years
Apparel/Textile Engineering Technology	8	63%	50%	38%
Civil Engineering Technology	37	41%	35%	22%
Computer Engineering Technology	28	46%	25%	18%
Computer Science	63	51%	37%	35%
Construction	25	64%	52%	36%
Electrical Engineering Technology	37	62%	41%	22%
General Studies/Undeclared	8	25%	13%	0%
Industrial Engineering Technology	8	50%	38%	25%
Information Technology	4	100%	50%	50%
International Technical Communication	1	10%	0%	0%
Management	20	60%	60%	30%
Mathematics	3	67%	33%	33%
Mechanical Engineering Technology	38	71%	45%	29%
Physics	1	100%	0%	0%
Pre-Architecture	25	60%	52%	8%
Software Engineering	2	50%	50%	50%
Surveying and Mapping	2	20%	0%	0%
Technical and Professional Communication	8	88%	50%	38%
Telecommunications Engineering Technology	12	42%	25%	8%
<b>Fall 02</b>				
Apparel/Textile Engineering Technology	6	50%	33%	
Civil Engineering Technology	32	56%	41%	
Computer Engineering Technology	19	37%	32%	
Computer Science	40	63%	55%	
Construction	22	41%	36%	
Electrical Engineering Technology	38	53%	37%	
General Studies/Undeclared	1	0%	0%	
Industrial Distribution	1	0%	0%	
Industrial Engineering Technology	7	86%	86%	
Information Technology	15	60%	40%	
International Technical Communication	1	100%	0%	
Management	22	46%	36%	
Mathematics	2	100%	50%	
Mechanical Engineering Technology	29	59%	35%	
Physics	1	0%	0%	
Pre-Architecture	48	69%	33%	
Software Engineering	4	75%	50%	
Surveying and Mapping	3	67%	67%	
Technical and Professional Communication	2	50%	50%	
Telecommunications Engineering Technology	12	50%	42%	

\*Graduated either in program they started or another program at SPSU.

**Fall-to-Fall Retention and Graduation Rates  
Transfers by Major (continued)**

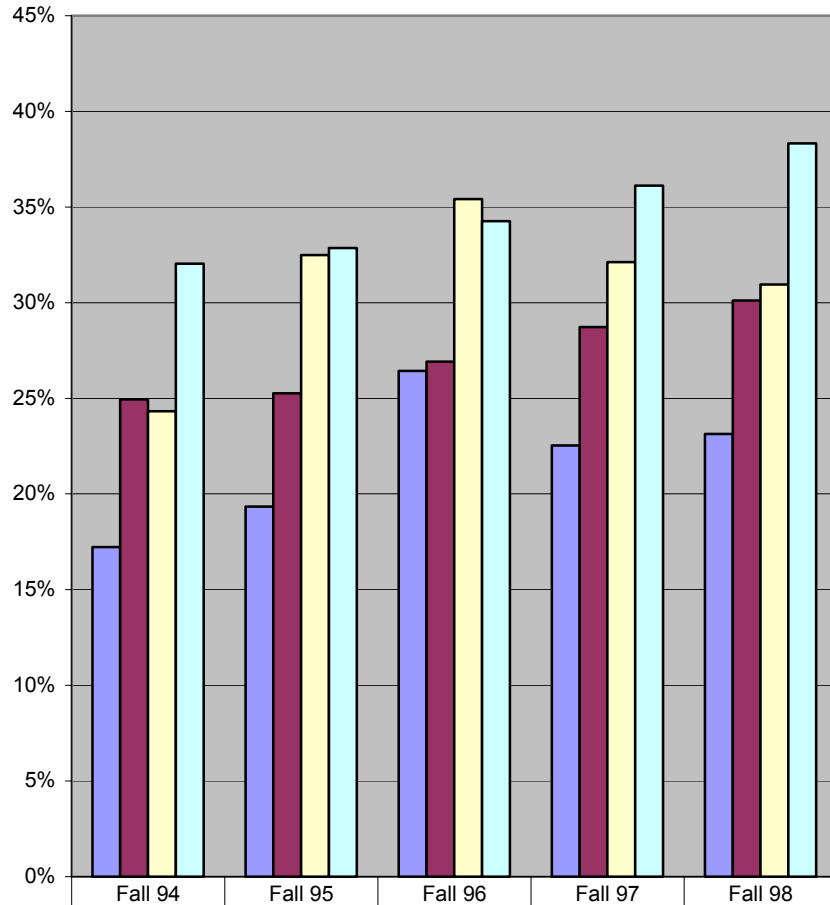
Fall 03	Number Enrolled	% Retained after 1 year
Apparel/Textile Engineering Technology	7	43%
Applied Science	1	33%
Biology	8	100%
Civil Engineering Technology	32	75%
Computer Engineering Technology	13	50%
Computer Science	36	46%
Construction	30	53%
Electrical Engineering Technology	38	60%
Industrial Engineering Technology	9	55%
Information Technology	26	44%
International Studies/Global Tech	1	54%
International Technical Communication	1	0%
Management	43	56%
Mathematics	5	20%
Mechanical Engineering Technology	36	56%
Physics	5	20%
Pre-Architecture	48	42%
Software Engineering	6	100%
Surveying and Mapping	6	83%
Technical and Professional Communication	4	25%
Telecommunications Engineering Technology	7	43%



**Industrial Eng Tech, Civil Eng Tech, and Construction had the highest graduation rates of transfers after six years (73%, 56%, and 55% respectively).**

Source: SPSU Banner

**6-Year Graduation Rates  
SPSU vs USG State Universities  
First-time Full-time Freshmen Entering Fall 94-98**



	Fall 94	Fall 95	Fall 96	Fall 97	Fall 98
■ Freshmen graduating from SPSU in 6-yrs	17%	19%	26%	23%	23%
■ Freshmen graduating from USG State U in 6-Yrs	25%	25%	27%	29%	30%
■ SPSU Freshmen graduating from USG in 6-yrs	24%	32%	35%	32%	31%
■ State U Freshmen graduating from USG in 6-Yrs	32%	33%	34%	36%	38%



**The graduation rate of SPSU freshmen from SPSU and other USG schools has increased over the past five years.**

Source: USG Retention Report

**4, 5, and 6-Year Graduation Rates**  
**First-time, Full-time Freshmen Entering Fall 1998**  
**by Race/Ethnicity**

Bachelor's Degree-Seekers In Four-Year Programs	Entered Fall 1998	Completed Degree In 4 Yrs or Less	Completed Degree In 5 Yrs	Completed Degree In 6 Yrs	Completed Degree In 4-6 Yrs	Six-Year Grad Rate
<b>Males</b>						
Nonresident Alien	0	0	0	0	0	
Black	38	0	4	2	6	15.8%
American Indian	1	0	0	0	0	0.0%
Asian	9	1	0	3	4	44.4%
Hispanic	4	0	1	0	1	25.0%
White	200	15	20	12	47	23.5%
Total	252	16	25	17	58	23.0%
<b>Females</b>						
Nonresident Alien	1	0	1	0	1	100.0%
Black	17	0	0	2	2	11.8%
American Indian	0	0	0	0	0	
Asian	6	0	2	0	2	33.3%
Hispanic	1	0	0	0	0	0.0%
White	30	3	3	2	8	26.7%
Total	55	3	6	4	13	23.6%
<b>Total</b>						
Nonresident Alien	1	0	1	0	1	100.0%
Black	55	0	4	4	8	14.5%
American Indian	1	0	0	0	0	0.0%
Asian	15	1	2	3	6	40.0%
Hispanic	5	0	1	0	1	20.0%
White	230	18	23	14	55	23.9%
Total	307	19	31	21	71	23.1%



The six-year graduation rate for Asian students who entered as freshmen is higher than for any other ethnic group.

Source: IPEDS Graduation Rate Survey

**Transfer-Out Rates**  
**First-time, Full-time Freshmen Entering Fall 1998**  
**by Race/Ethnicity**

Bachelor's Degree-Seekers In Four-Year Programs	Entered Fall 1998	Transferred to another USG Institution	Six-Year Transfer-Out Rate
<b>Males</b>			
Nonresident Alien	0	0	
Black	38	10	26.3%
American Indian	1	1	100.0%
Asian	9	2	22.2%
Hispanic	4	1	25.0%
White	200	65	32.5%
Total	252	79	31.3%
<b>Females</b>			
Nonresident Alien	1	0	0.0%
Black	17	8	47.1%
American Indian	0	0	
Asian	6	3	50.0%
Hispanic	1	0	0.0%
White	30	11	36.7%
Total	55	22	40.0%
<b>Total</b>			
Nonresident Alien	1	0	0.0%
Black	55	18	32.7%
American Indian	1	1	100.0%
Asian	15	5	33.3%
Hispanic	5	1	20.0%
White	230	76	33.0%
Total	307	101	32.9%



The transfer-out rate is similar for all ethnic groups.

Source: IPEDS Graduation Rate Survey

**7-Year Graduation Rates in Architecture**  
**First-time, Full-time Freshmen Entering Fall 1996**  
**by Race/Ethnicity**

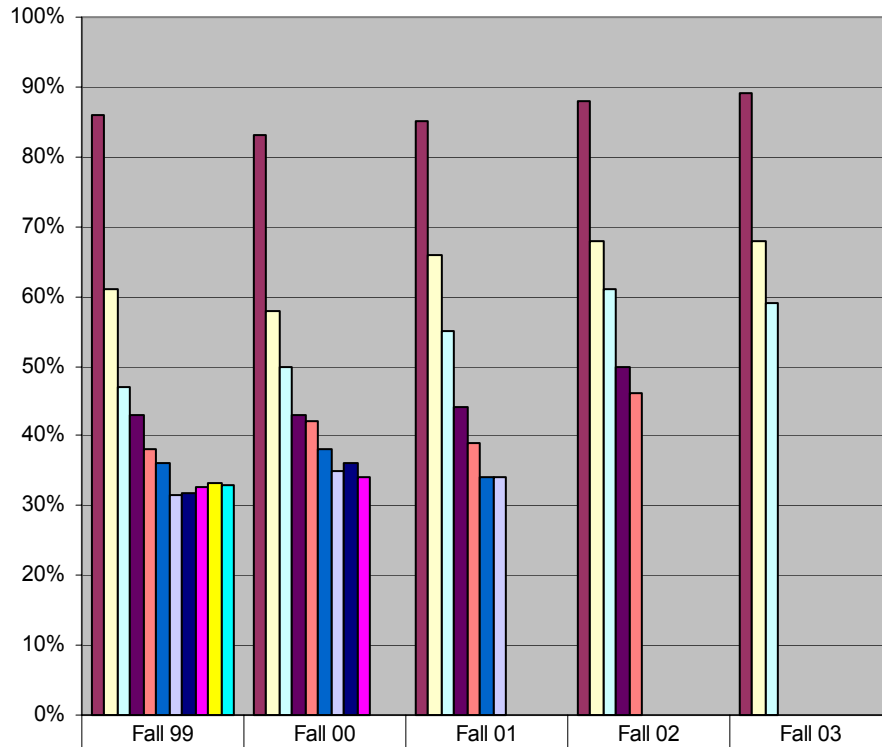
Bachelor's Degree-Seekers In Architecture Programs	Entered Fall 1996	Completed Degree In 5-7 Yrs	Seven-Year Graduation Rate
<b>Males</b>			
Nonresident Alien	0	0	
Black	11	2	18.2%
American Indian	0	0	
Asian	3	1	33.3%
Hispanic	3	0	0.0%
White	39	14	35.9%
Total	56	17	30.4%
<b>Females</b>			
Nonresident Alien	0	0	
Black	5	1	20.0%
American Indian	0	0	
Asian	1	0	0.0%
Hispanic	0	0	
White	9	2	22.2%
Total	15	3	20.0%
<b>Total</b>			
Nonresident Alien	0	0	
Black	16	3	18.8%
American Indian	0	0	
Asian	4	1	25.0%
Hispanic	3	0	0.0%
White	48	16	33.3%
Total	71	20	28.2%




The seven-year graduation rate for Architecture students is 5 percentage points higher than the six-year graduation rate for all other students. These rates are comparable because they both represent a completion of the degree within 150% of normal time.

Source: IPEDS Supplemental Graduation Rate Survey

**Retention of Freshmen by Semester Entering in  
Fall 99-03**



	Fall 99	Fall 00	Fall 01	Fall 02	Fall 03
■ Retained by 2nd semester	86%	83%	85%	88%	89%
□ Retained by 3rd semester	61%	58%	66%	68%	68%
□ Retained by 4th semester	47%	50%	55%	61%	59%
■ Retained by 5th semester	43%	43%	44%	50%	
■ Retained by 6th semester	38%	42%	39%	46%	
■ Retained by 7th semester	36%	38%	34%		
□ Retained/graduated by 8th sem	32%	35%	34%		
■ Retained/graduated by 9th sem	32%	36%			
■ Retained/graduated by 10th sem	33%	34%			
■ Retained/graduated by 11th sem	33%				
■ Retained/graduated by 12th sem	33%				

 **The largest drop in retention occurs at the end of the second semester, followed by the end of the third semester. By the end of the fourth semester 50% of the entering freshman cohort is gone.**

Source: SPSU Banner